

LAS VEGAS VALLEY WATER DISTRICT STANDARD NOTES

- NO WORK SHALL BEGIN UNTIL THE WATER PLANS HAVE BEEN RELEASED FOR CONSTRUCTION BY THE LVWD. A WRITING WATER PLAN APPROVAL FORTY-EIGHT (48) HOUR NOTICE SHALL BE GIVEN TO THE LVWD COMMUNICATIONS SUPPORT CENTER (258-7171) PRIOR TO THE START OF CONSTRUCTION. NOTICE MUST BE GIVEN BY 2:00 P.M. THE BUSINESS DAY PRIOR TO A LVWD INSPECTION.
 - ALL WORK SHALL CONFORM TO THE LVWD'S STANDARD PLATES, DRAWINGS, AND SPECIFICATIONS AND THE UNIFORM DESIGN AND CONSTRUCTION STANDARDS FOR WATER DISTRIBUTION SYSTEMS (UDACS), LATEST EDITION.
 - ALL WORK, EXCEPT AS MODIFIED BY THESE PLANS OR BY NOTE 2, SHALL BE DONE IN ACCORDANCE WITH THE MOST CURRENT DRAFT OR EDITION OF THE UNIFORM STANDARD SPECIFICATIONS FOR PUBLIC WORKS CONSTRUCTION OFF-SITE IMPROVEMENT, CLARK COUNTY AREA.
 - A SINGLE PIPE MATERIAL SHALL BE USED THROUGHOUT THE PROJECT, UNLESS OTHERWISE APPROVED BY THE LVWD.
 - ALL SERVICE LATERALS TWO INCHES (2") IN DIAMETER AND SMALLER SHALL BE COPPER TUBING WITH LVWD APPROVED SERVICE SADDLES.
 - ALL WATER METER BOXES SHALL BE LOCATED OUTSIDE OF DRIVEWAY AREAS.
 - ALL VALVES SHALL BE LOCATED OUTSIDE OF DRIVEWAYS, VALLEY AND CURB GUTTERS.
 - THE FOLLOWING REQUIREMENTS MUST BE MET IN THE EVENT A WATER LINE AND SANITARY OR STORM SEWER LINE CROSS:
 - A MINIMUM EIGHTEEN INCH (18") VERTICAL SEPARATION (OUTSIDE TO OUTSIDE) MUST BE MAINTAINED WHEN THE WATER LINE IS INSTALLED OVER THE SANITARY OR STORM SEWER LINE. IF THE VERTICAL SEPARATION CANNOT BE MAINTAINED OR THE WATER LINE MUST BE PLACED UNDER THE SANITARY OR STORM SEWER LINE, THE SANITARY OR STORM SEWER LINE MUST BE CONSTRUCTED WITH ONE OF THE FOLLOWING OR, AS SHOWN ON THESE PLANS:
 - POTABLE WATER SUPPLY QUALITY MATERIAL.
 - ENCASEMENT, WITH FOUR INCH (4") CONCRETE (MINIMUM)
 - SLEEVING WITH POTABLE WATER SUPPLY QUALITY PIPE.
 - EACH PROVISION MUST EXTEND ALONG THE SANITARY OR STORM SEWER, ON EITHER SIDE OF THE MAIN, A MINIMUM TEN FOOT (10') DISTANCE PERPENDICULAR TO THE WATER MAIN EXTERIOR.
 - WARNING TAPE SHALL BE REQUIRED OVER ALL MAINS, ALL SIX INCH (6") DIAMETER AND LARGER SERVICE LATERALS, AND ANY SERVICE LATERAL NOT INSTALLED PERPENDICULAR TO THE MAIN IN ACCORDANCE WITH STANDARD PLATE NO. 27.
 - ALL WATER FACILITIES SHALL BE FILLED, DISINFECTED, PRESSURE TESTED, FLUSHED, FILLED AND AN ACCEPTABLE WATER SAMPLE OBTAINED PRIOR TO CONNECTION TO THE LVWD'S DISTRIBUTION SYSTEM.
 - THE CONTRACTOR MUST OBTAIN ALL METERS TWO INCHES (2") AND SMALLER FROM LVWD CENTRAL STORES. TELEPHONE 258-3152 FORTY-EIGHT (48) HOURS PRIOR TO PICK-UP.
 - CONSTRUCTION MAY INTERRUPT SERVICE, WITH LVWD APPROVAL AND PROPER NOTIFICATION, BETWEEN THE HOURS OF 10 PM AND 6 AM, SUNDAY THROUGH THURSDAY. CIRCUMSTANCES MAY REQUIRE TEMPORARY SERVICE FEEDS BE INSTALLED, WITHOUT LVWD REIMBURSEMENT. ANY TEMPORARY SERVICE FEED MUST HAVE PRIOR LVWD APPROVAL.
 - ALL WATER FACILITY CONSTRUCTION MATERIALS USED MUST BE AS LISTED ON THE LVWD'S PRE-APPROVED MATERIALS AND MANUFACTURERS LISTING FOR NEW FACILITIES, LATEST REVISION OR SPECIFICALLY APPROVED ON THESE PLANS.
- REVISED: FEBRUARY 20, 1997

NOTE
EXISTING UTILITY LOCATIONS SHOWN HEREIN ARE APPROXIMATE ONLY. IT SHALL BE THE CONTRACTOR'S RESPONSIBILITY TO DETERMINE THE EXACT VERTICAL AND HORIZONTAL LOCATION OF ALL EXISTING UNDERGROUND UTILITIES PRIOR TO COMMENCING CONSTRUCTION. NO REPRESENTATION IS MADE THAT ALL EXISTING UTILITIES ARE SHOWN HEREON. THE ENGINEER ASSUMES NO RESPONSIBILITY FOR UTILITIES NOT SHOWN OR UTILITIES NOT SHOWN IN THEIR PROPER LOCATION. CALL BEFORE YOU DIG: 1-800-227-2600.

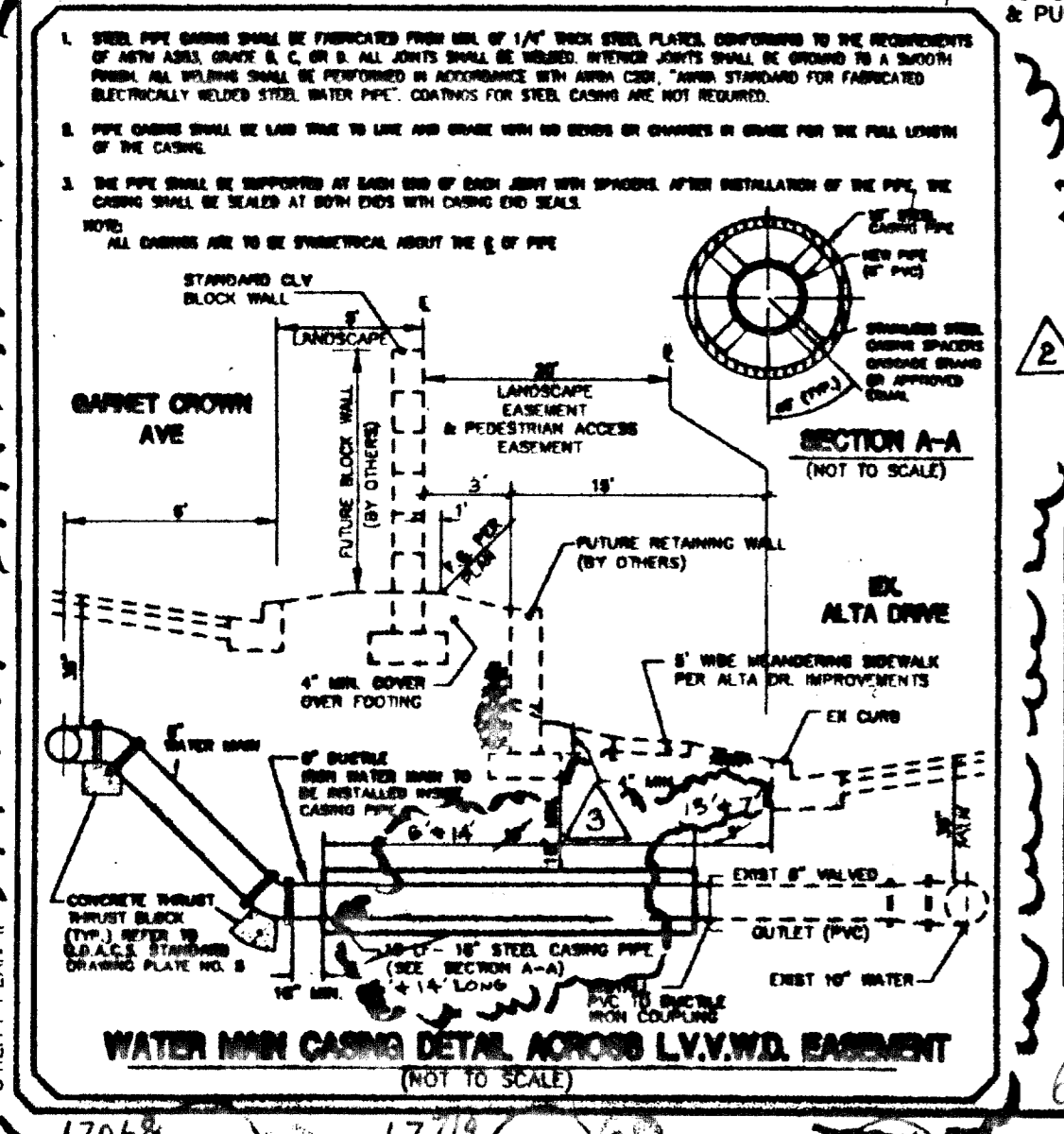
LAS VEGAS FIRE DEPARTMENT
FIRE FLOW REQUIREMENT IS 2,000 GALLONS PER MINUTE AT 20 POUNDS PER SQUARE INCH RESIDUAL.
BASED ON:
SQUARE FOOTAGE _____ 6000
HEIGHT _____ TWO-STORY
TYPE OF CONSTRUCTION _____ TYPE 5
SPRINKLER SYSTEM _____ NONE
OCCUPANCY _____ SINGLE-FAMILY
ROOF CONSTRUCTION _____ TILE
NOTE: THIS SUBDIVISION HAS 2 SOURCES OF WATER.
SIGNATURE: *[Signature]* 6/10/99

AS-BUILT
BASED ON INFORMATION PROVIDED BY OTHERS. THIS INFORMATION HAS NOT BEEN FIELD VARIFIED BY STANTEC CONSULTING, INC.

BENCHMARK
NATIONAL GEODETIC VERTICAL DATUM OF 1929 (DATUM USED)
DLV00315SW6, RIVET & PLATE IN TOP OF CURB ON CHARLESTON BOULEVARD 1690' WEST OF GRAND CANYON DRIVE, NORTH CURB LINE AT DROP INLET. CITY OF LAS VEGAS DATUM ELEVATION = 2865.191 (FOR CONVERSION TO 1988 DATUM, ADD 2.46')

BASIS OF BEARINGS
NORTH 89°41'18" EAST, BEING THE BEARING OF THE SOUTH LINE OF THE SOUTHWEST QUARTER (SW 1/4) OF SECTION 31, TOWNSHIP 20 SOUTH, RANGE 60 EAST, MOUNT DIABLO MERIDIAN, AS SHOWN ON A MAP ON FILE IN THE CLARK COUNTY, NEVADA, RECORDER'S OFFICE IN FILE 76, PAGE 85 OF PARCEL MAPS.
THE ABOVE REFERENCED LINE IS ALSO THE APPROXIMATE CENTERLINE OF CHARLESTON BOULEVARD, DIRECTLY EAST OF HUALAPAI WAY.

APPROVALS:
[Signature] 6/17/99
LAS VEGAS VALLEY WATER DISTRICT
DATE



- FITTING LEGEND:**
- ① FIRE HYDRANT ASSEMBLY
 - ② 8" - 90° BEND
 - ③ 8" - 45° BEND
 - ④ 8" WATER VALVE
 - ⑤ 8" WATER VALVE
 - ⑥ 8" X 6" X 6" TEE
 - ⑦ 2" B.O. VALVE
 - ⑧ 8" X 8" X 6" TEE
 - ⑨ 8" X 6" REDUCER

SEWER CONSTRUCTION NOTE:
THE DOWNSTREAM SEWER SYSTEM(S) THAT WILL SERVE THIS PROJECT HAS NOT BEEN COMPLETED AND/OR ACCEPTED FOR MAINTENANCE BY THE C.L.V. ANY WORK DONE ON THIS PROJECT PRIOR TO THE COMPLETION AND/OR ACCEPTANCE OF THE DOWNSTREAM SEWER SYSTEM(S) SHALL BE DONE AT THE DEVELOPER'S OWN RISK. THE CITY OF LAS VEGAS RESERVES THE RIGHT TO PREVENT THE PHYSICAL CONNECTION OF THIS PROJECT INTO THE DOWNSTREAM SEWER SYSTEM UNTIL ALL SEGMENTS HAVE BEEN COMPLETED AND ACCEPTED FOR MAINTENANCE OR UNTIL SUCH TIME AS THEY HAVE BEEN DEEMED AVAILABLE FOR SERVICE.

NOTE
ALL STREETS ARE PRIVATE DRIVES. PUBLIC UTILITY EASEMENT, CITY OF LAS VEGAS SEWER EASEMENT AND PUBLIC DRAINAGE EASEMENT (PRIVATELY MAINTAINED).

* BWV - BACK BACK WATER VALVE

Call before you Dig.
1-800-227-2600
UNDERGROUND SERVICE ALERT (USA)

NO.	DESCRIPTION	DATE	APPROVED
1	CHANGED STEEL CASING LENGTH TO 6' X 14'	6/17/99	[Signature]
2	ADD STEEL CASING PIPE FOR WATER MAIN	6/17/99	[Signature]
3	CHANGE LINE TYPE TO MAIN SEWER PROPOSED	6/17/99	[Signature]

COLEMAN HOMES
1635 VILLAGE CENTER CIRCLE, SUITE 100
LAS VEGAS, NEVADA 89134
(702) 234-9800

PENTACORE
CIVIL ENGINEERING, LAND SURVEYING, PLANNING
CONSTRUCTION MANAGEMENT AND CONSULTING
LAS VEGAS, NEVADA 89102 (702) 258-0115

UTILITY PLAN II
PARCEL 18-3, PHASE 2
OF PECCOLE WEST, LOT 10

DATE:	5/28/99	D.P.W.:	1"=40'
BY:	[Signature]	DESIGNED BY:	[Signature]
CHECKED BY:	[Signature]	JOB NO.:	0224.0010
SCALE:	1"=40'		

PROFESSIONAL ENGINEER
DENNIS W. WITZEL
CIVIL
No. 11970
EXPIRES 12-31-99

SHEET **AS-BUILT** 4 OF 12
C.L.V. DWG. #