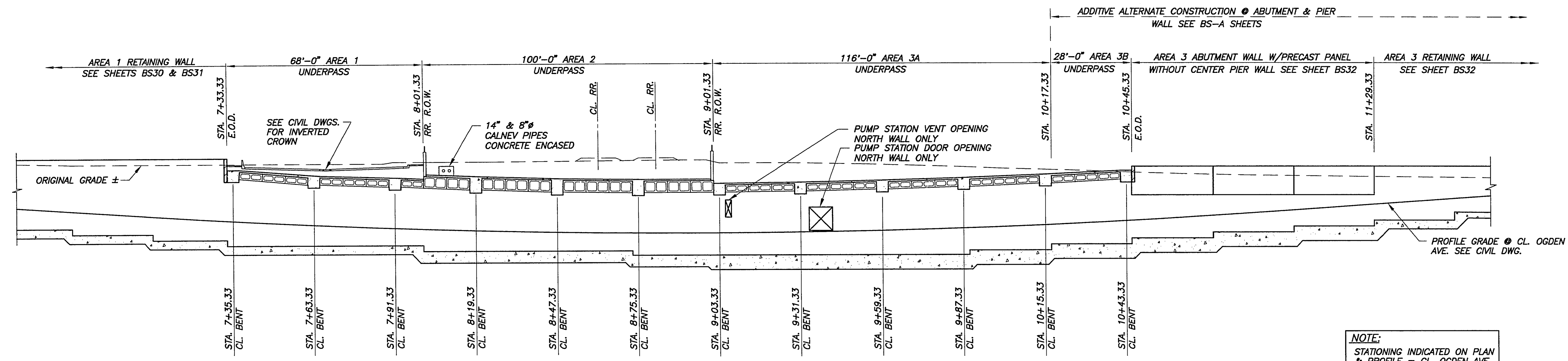


CLV VENT UNDERPASS BS-02C Mod Nov 2 12:58:44 1994

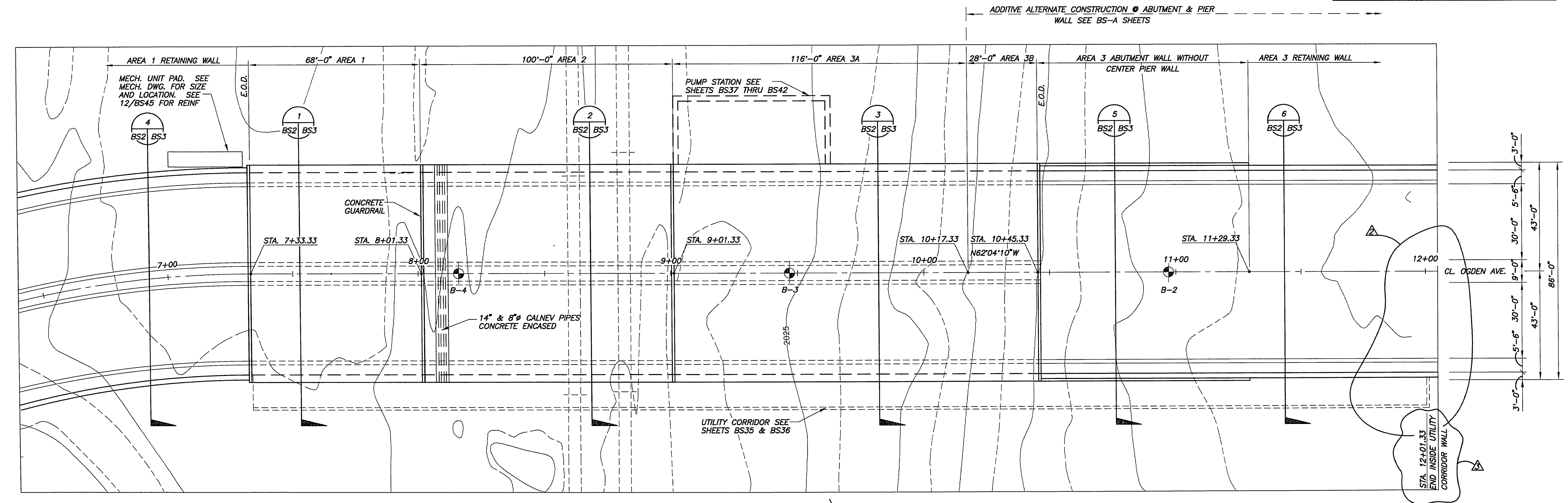
PROJECT DATE: 08/21/93 14:41
DRAWN BY: ALV/LENIE
PROJECT SCALE: 1"=20'
FILE SPECIFICATION: D:\ODGEN\BS-02



NOTE:
STATIONING INDICATED ON PLAN & PROFILE = CL. OGDEN AVE. SEE CIVIL DWG.

SECTION
SCALE: HORIZ. 1"=20'
VERT. 1"=8'

RECORD DRAWINGS



PLAN
SCALE: 1" = 20'

CLV DRAWING No. 107-V2011

8/9/93	RBP	REVISION-REDUCTION OF UTILITY CORRIDOR LENGTH	
7/19/93	RBP	REVISION- UTILITY CORRIDOR LENGTH	
MARK	DATE	BY	REVISION

DESIGNED:	RBP	PROJECT ENGINEER	DATE
DRAWN:	MWM	PROJECT MANAGER	DATE
CHECKED:	AHG/DJS		

B Boyle Engineering Corporation
consulting engineers
Suite 300
1795 E. Sahara Ave.
Las Vegas, NV 89104
(702) 731-5911

CITY OF LAS VEGAS
DEPARTMENT OF PUBLIC WORKS

OGDEN AVENUE UNDERPASS AND ROADWAY
GENERAL PLAN & SECTION
OGDEN AVE. UNDERPASS

DRAWING
BS2C
36 OF 125
BS-2C

35-31