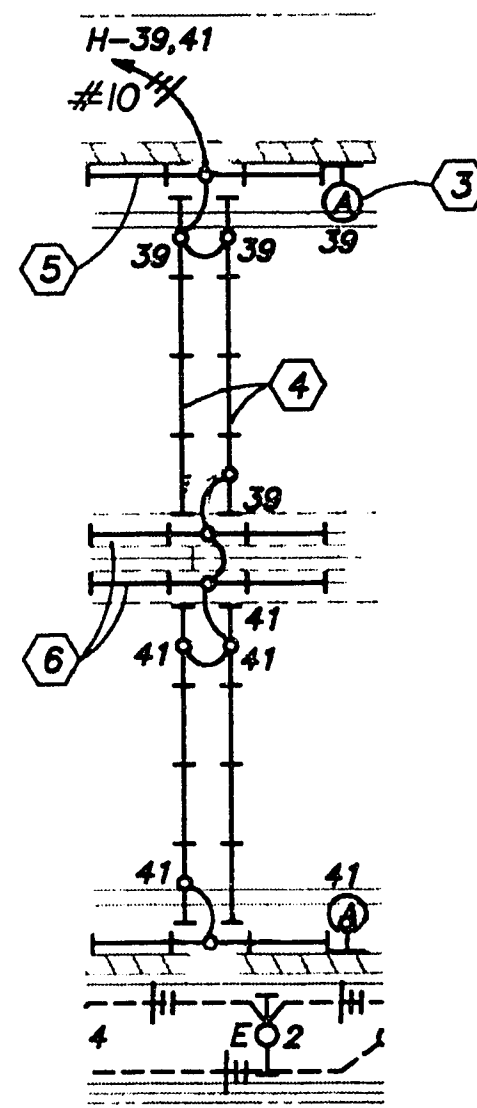
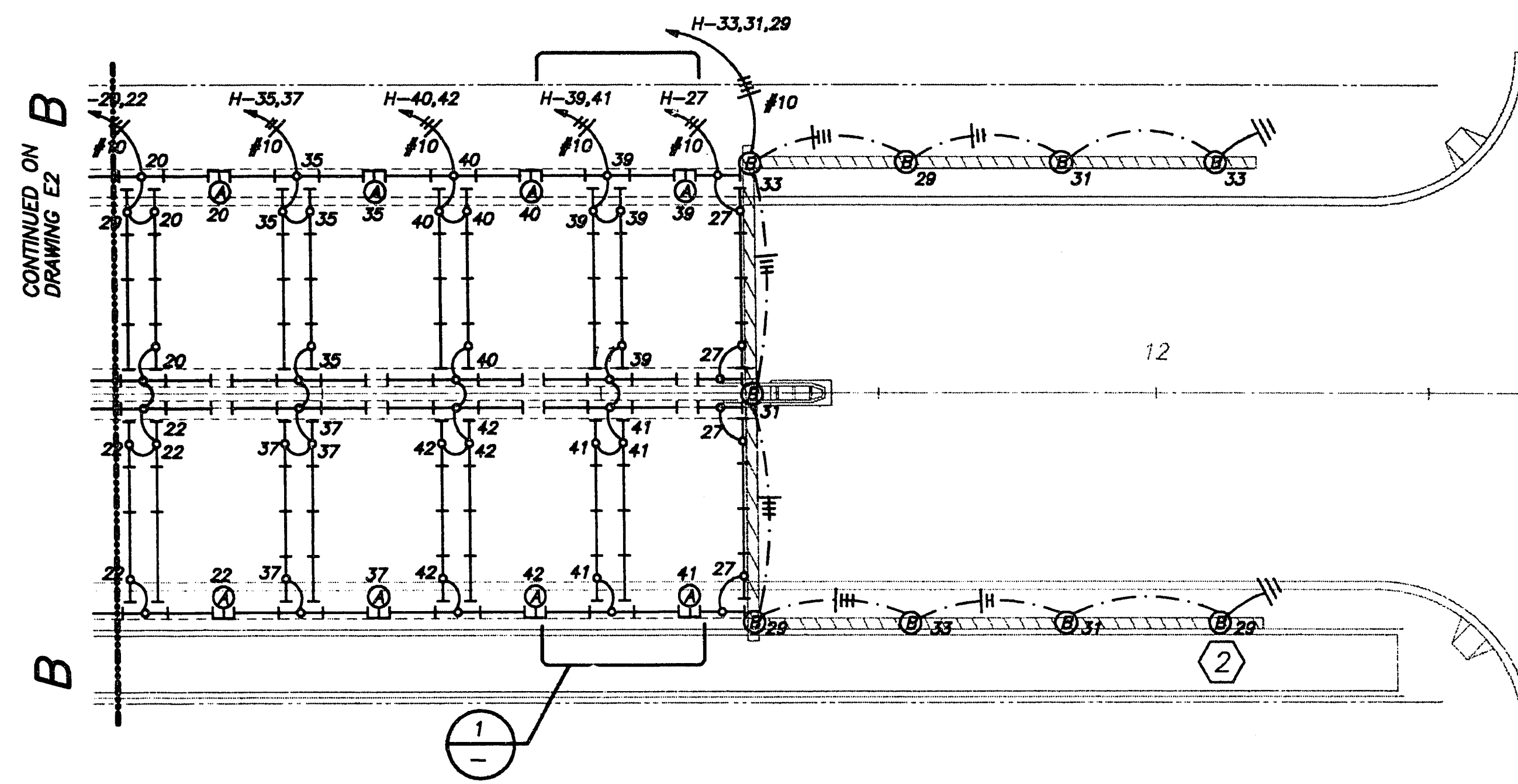


NOTES

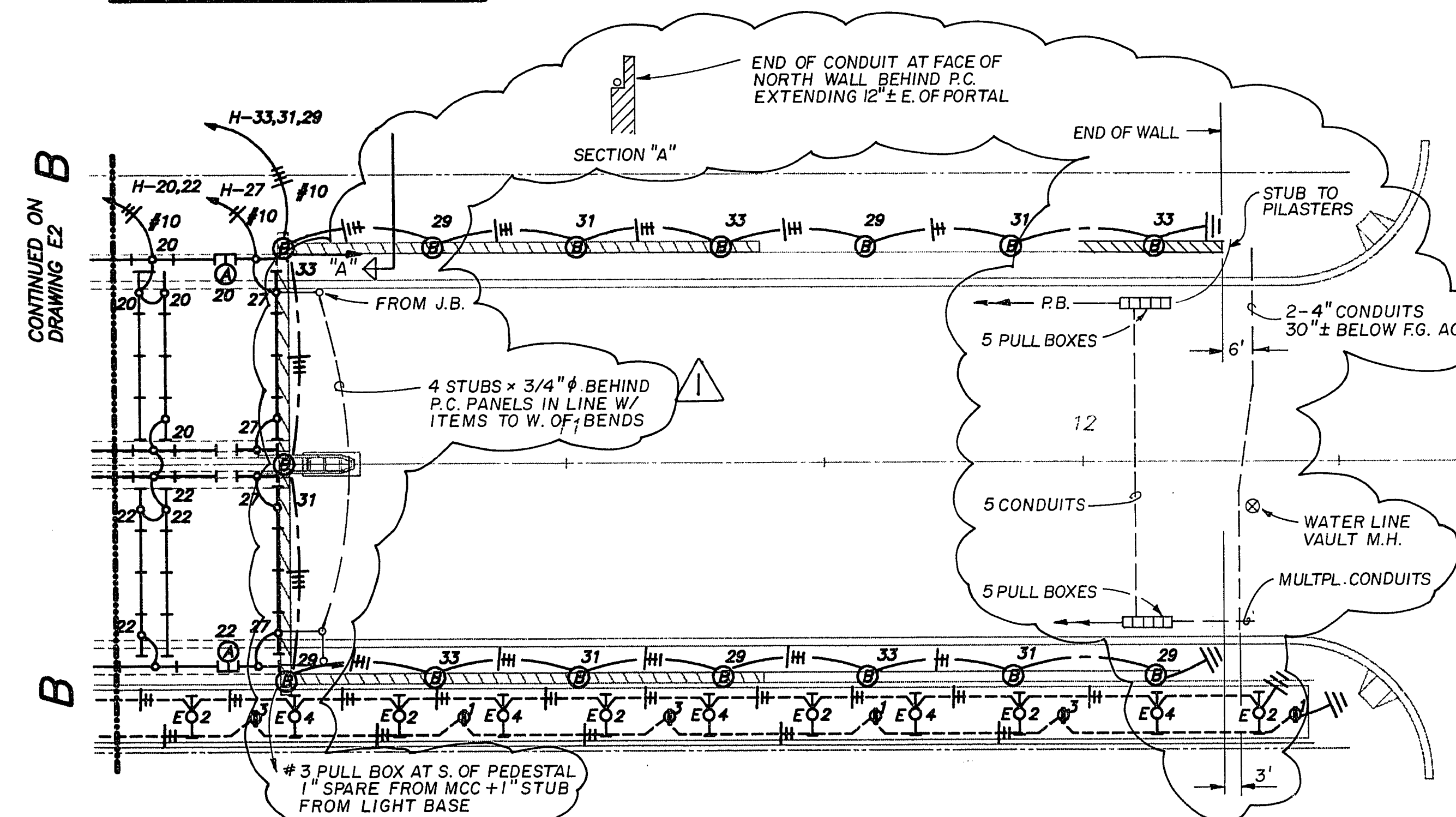
- ① WALL BRACKET "A" CIRCUIT MAY USE FLUORESCENT FIXTURE "D" CHANNEL AS WIREWAY (NEC 410-31), PROVIDED #12 XHHN BRANCH CIRCUIT CONDUCTORS ARE USED.
- ② UTILITY CORRIDOR LIGHTING AND POWER SAME AS FOR BASE BID.
- ③ TYPE "A" LIGHTING FIXTURE (TYP NORTH AND SOUTH WALL)
- ④ 4 TYPE "D1" LIGHTING FIXTURE (TYP BOTH SIDES OF BEAMS)
- ⑤ 3 TYPE "D" LIGHTING FIXTURE (TYP NORTH AND SOUTH WALL)
- ⑥ 3 TYPE "D" LIGHTING FIXTURE (TYP CENTER PIER)



① TYPICAL LIGHTING ZONE

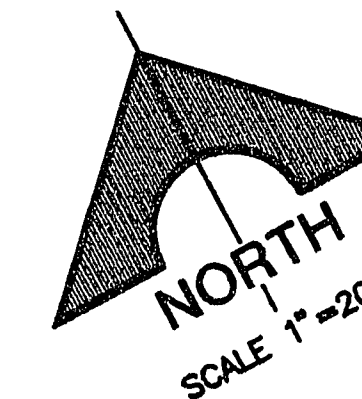


PLAN - ALTERNATE BID



PLAN - BASE BID

RECORD DRAWINGS



REISSUED 10-16-92 WITHOUT REVISION

CLV DRAWING No. 107-V2011

09-17-92	10/7/94	BE	RECORD DRAWINGS
MARK	DATE	BY	REVISION

DESIGNED: HR	PROJECT ENGINEER	DATE
DRAWN: HGW	PROJECT ENGINEER	DATE
CHECKED: GWS	PROJECT MANAGER	DATE

Boyle Engineering Corporation
consulting engineers
Suite 300
1785 E. Sahara Ave
Las Vegas, NV 89104
(702) 731-5511

CITY OF LAS VEGAS
DEPARTMENT OF PUBLIC WORKS

OGDEN AVENUE UNDERPASS AND ROADWAY
UNDERPASS ELECTRICAL PLAN-EAST

DRAWING
E3
113 OF 125
OGSHED03

3-5-114