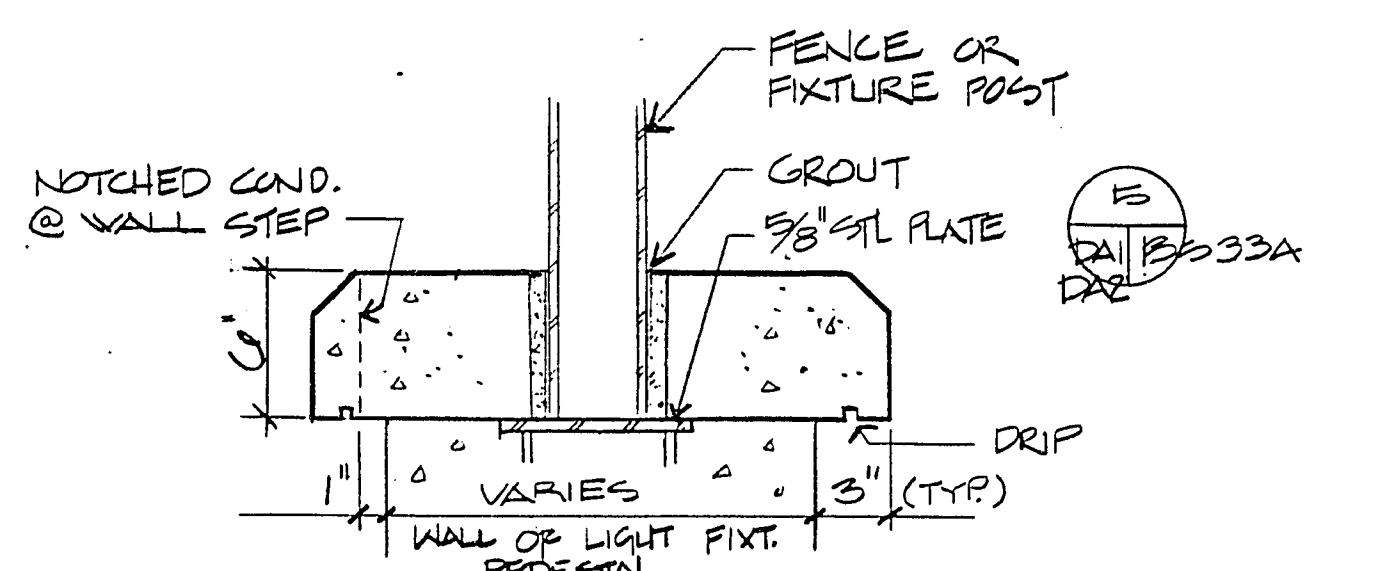


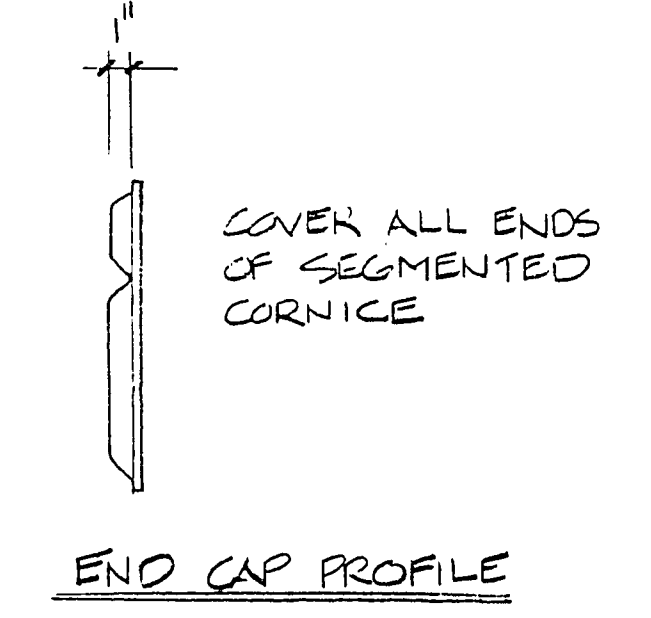
**PERIOD FIXTURES**

N.T.S. 6  
 AZ A2A A3 A3A DAI  
 A5 A5A A6 A7  
 A8 A9 A10 A11

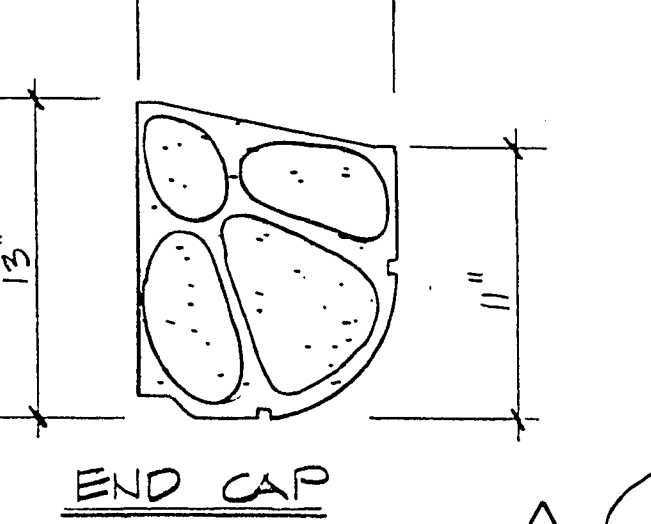


**COPING** CAST-IN-PLACE CONCRETE

1 1/2" = 1'-0"  
 FRG (SEE SPEC. SECTION 814)  
 HEAVY SANDBLAST FINISH - PAINT TO MATCH ADJ.  
 ATTACH PER MANUF. RECOMMEND.  
 15" CONTINUOUSLY HINGED PRISMATIC LENS  
 1/2" Ø WEEPS @ 2'-0" O.C.  
 FACE OF BM



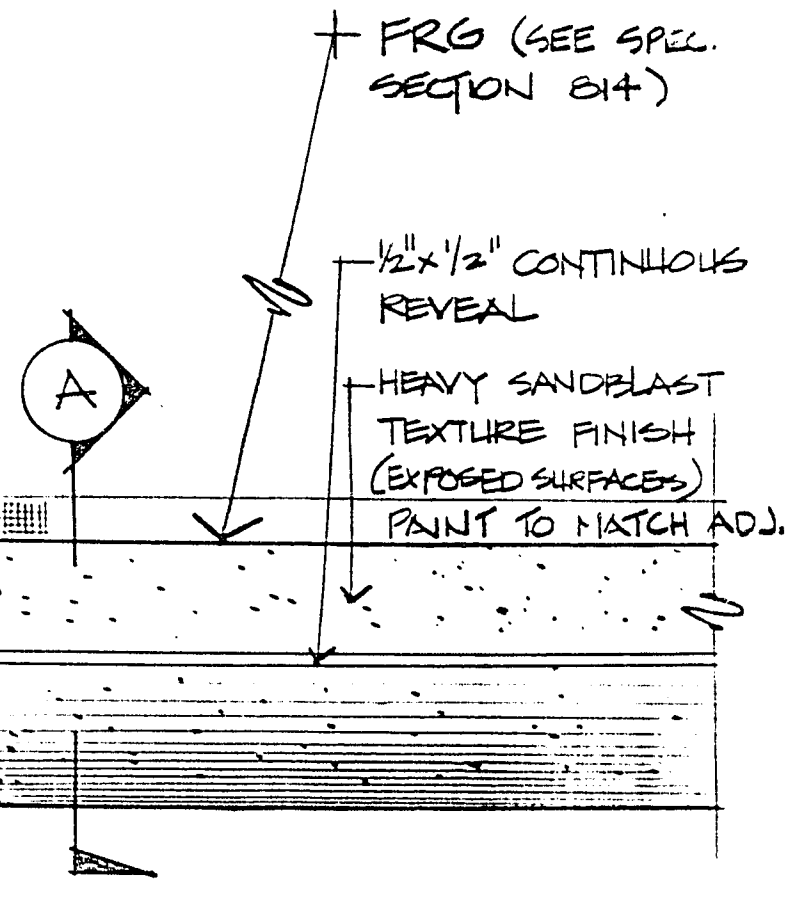
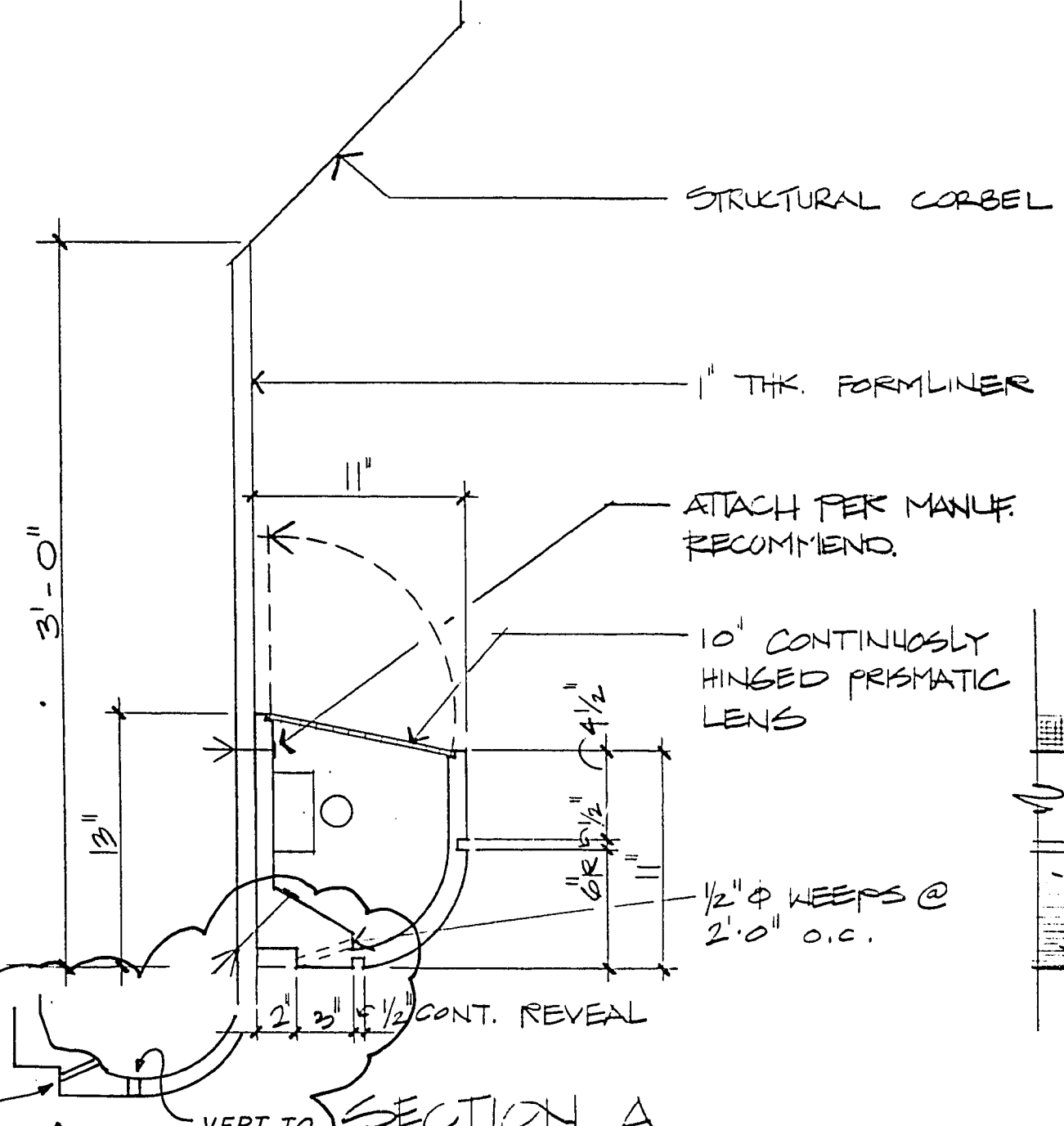
**END CAP PROFILE**



**END CAP**

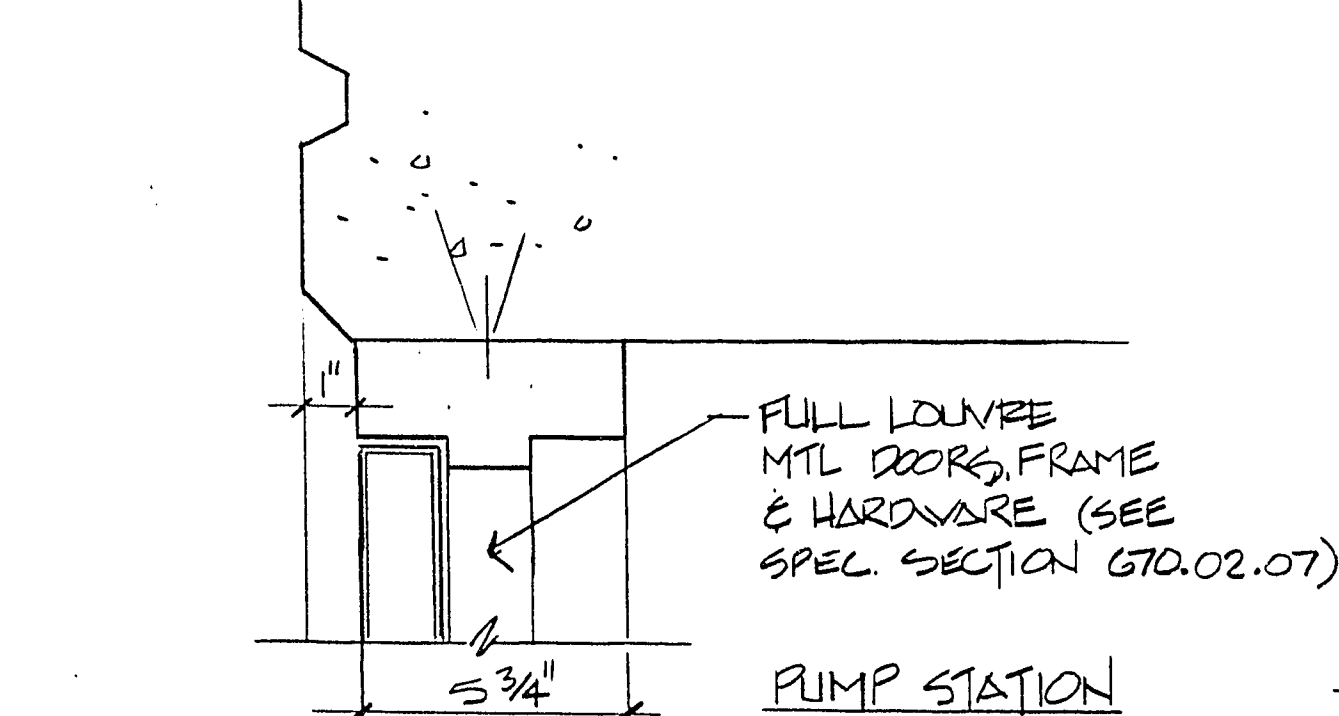
**LIGHTING CORNICE**

1 1/2" = 1'-0"



**ELEVATION**

FRG (SEE SPEC. SECTION 814)  
 1/2" x 1/2" CONTINUOUS REVEAL  
 HEAVY SANDBLAST TEXTURE FINISH (EXPOSED SURFACES)  
 PAINT TO MATCH ADJ.

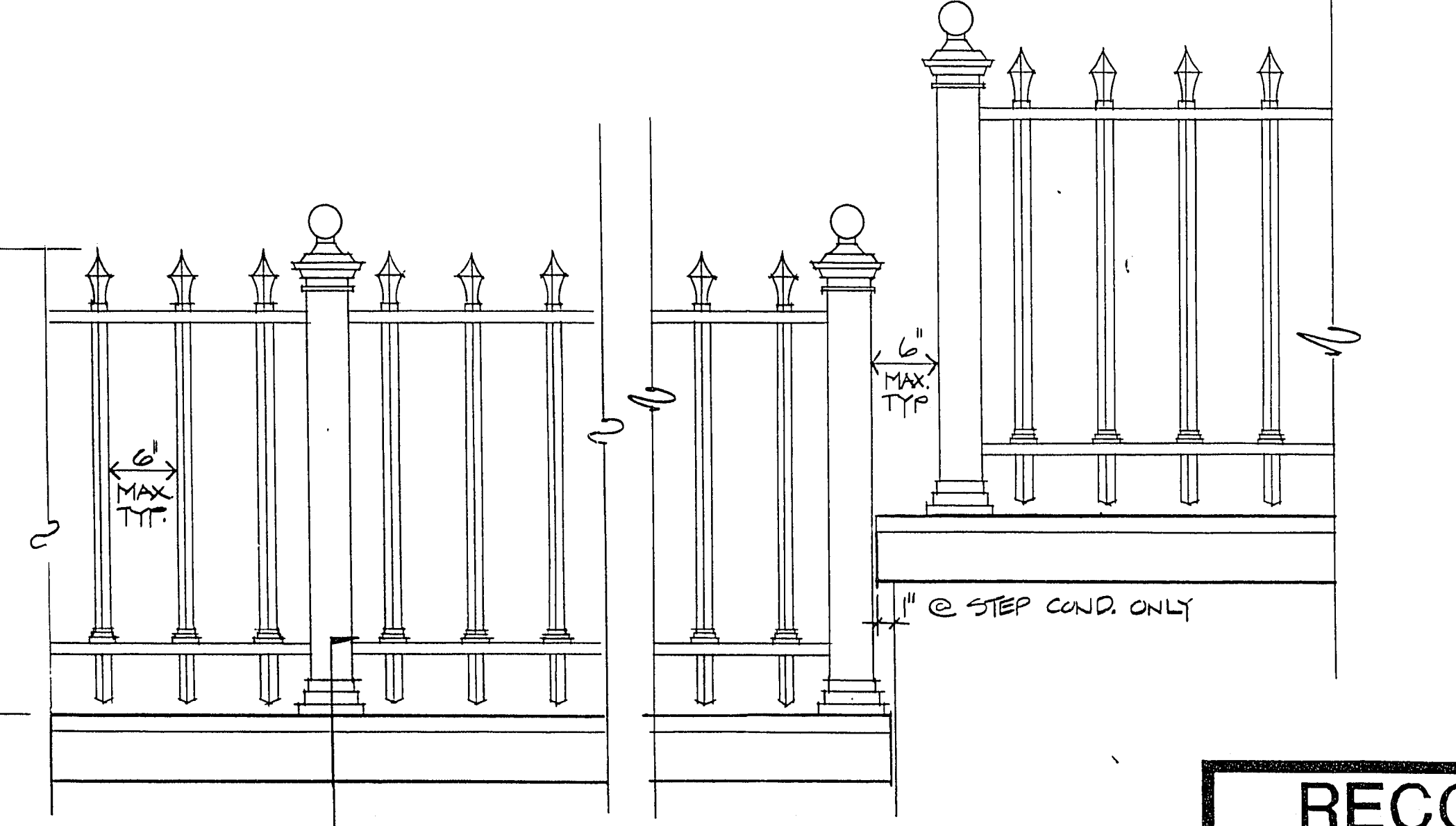


**DOOR HEAD / JAMB SIM (DOOR 101)**

3" = 1'-0" 7  
 A5A A5B

**COVE MOULDING**

1 1/2" = 1'-0" 4  
 A5 AU A5A DAI  
 A7 A11 A11A

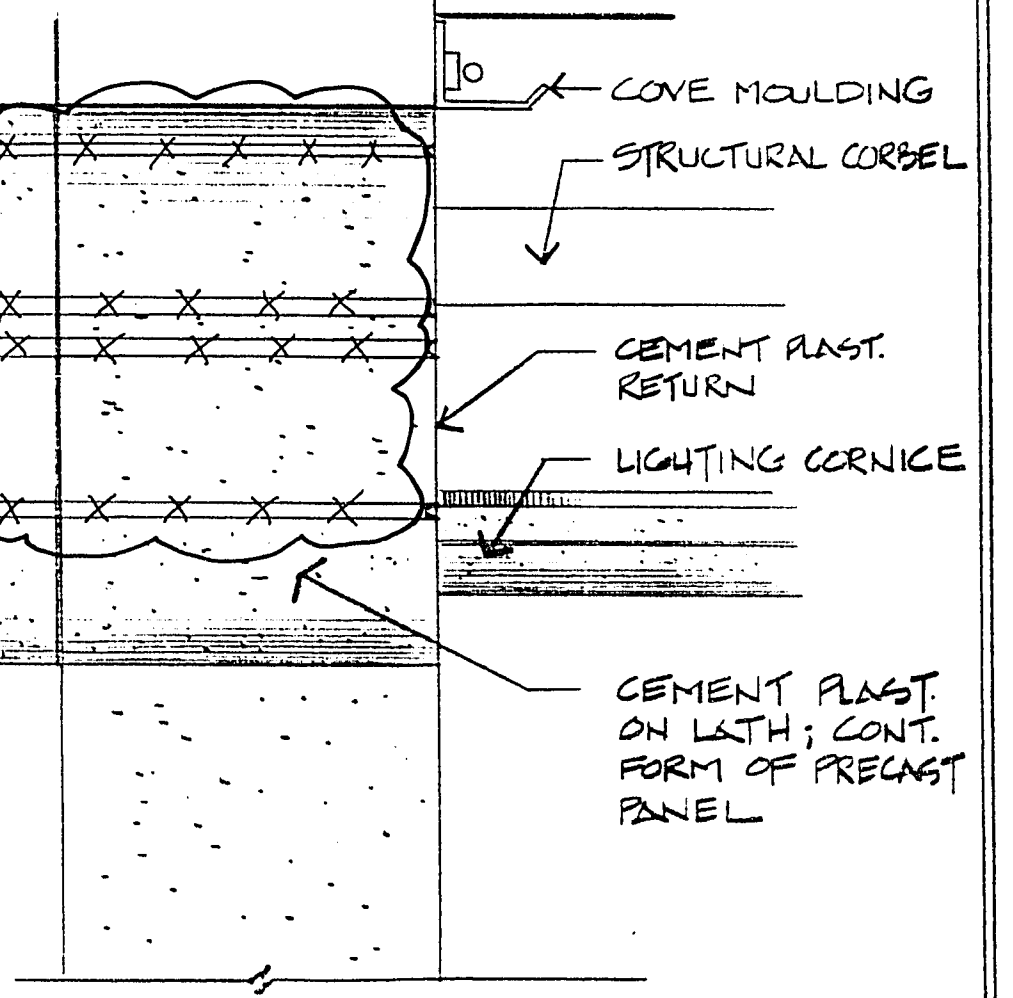
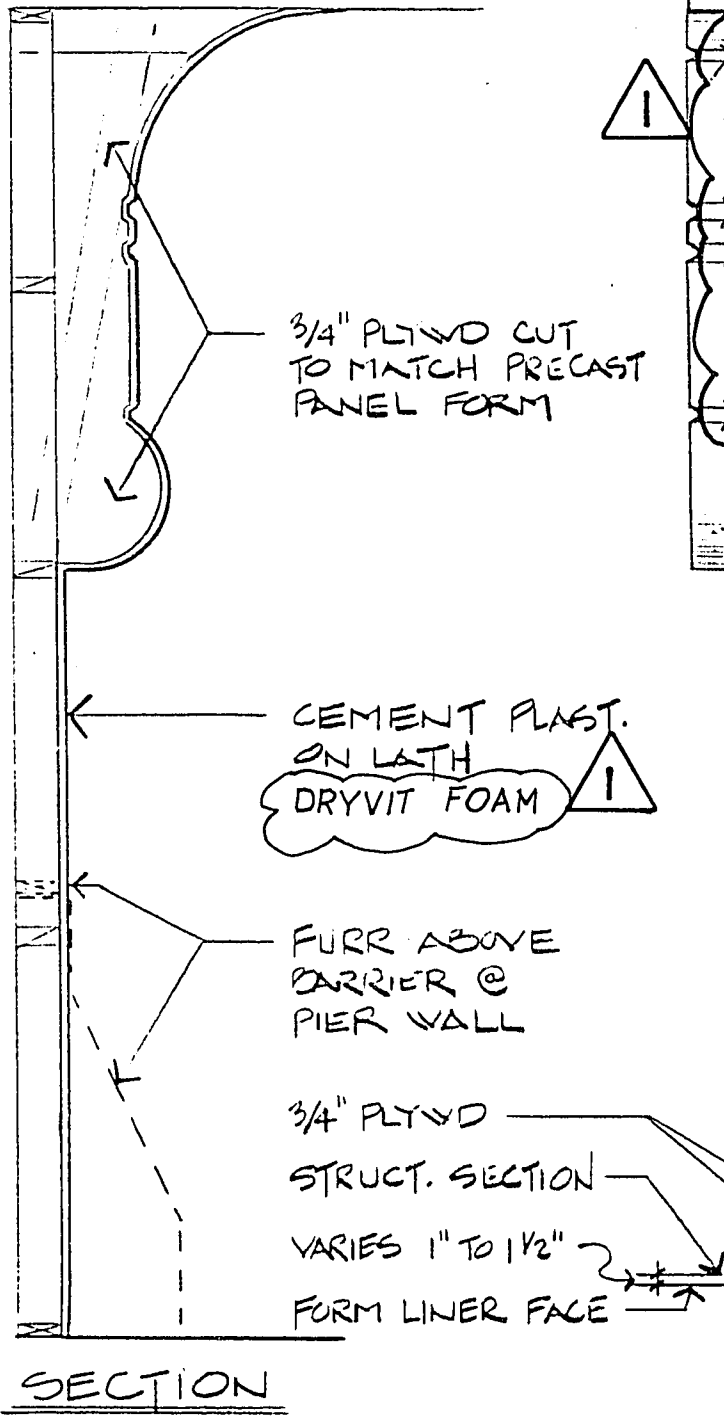


**ORNAMENTAL FENCING** (SEE SPEC. SECTION 815)

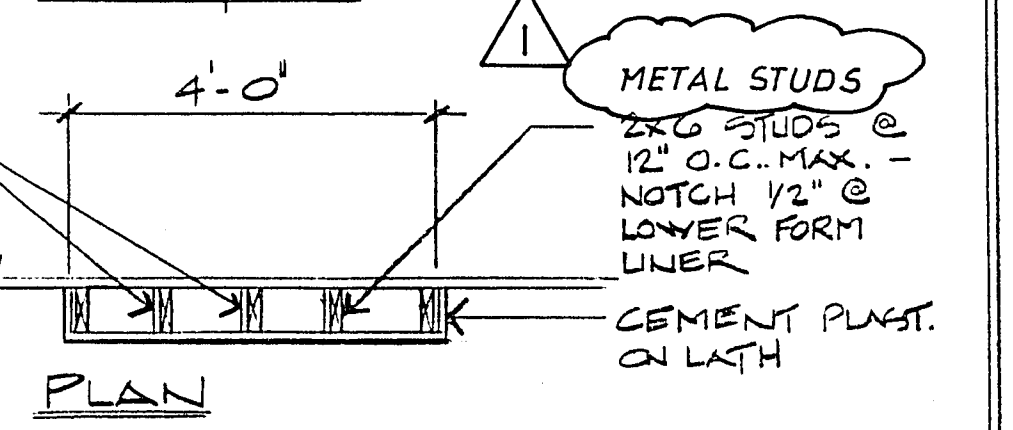
1" = 1'-0" 5  
 AZ A2A A3 A3A DAI  
 A7 A8 A9 A10 DAZ

**LIGHTING CORNICE**

1 1/2" = 1'-0" 1  
 A5 A5A DAI  
 A7 A11 A11A



**ELEVATION**



**PLAN**

**RECORD DRAWINGS**

**FURRED PILASTER & ARCH**

1 1/2" = 1'-0" 2  
 A3 A5A A7 A7A DAI  
 A5 A5A A7 A11 A11A DAZ

FILENAME: 000-12000	REV. DATE: 1 JULY 1992	REV. BY: CLV	REV. NO: 1
10/78	BE	RECORD DRAWINGS	
MARK	DATE	BY	REVISION

DESIGNED: GLB	PROJECT ENGINEER	DATE
DRAWN: CVT	PROJECT MANAGER	DATE
CHECKED: GLB		

**Boyle Engineering Corporation**  
 consulting engineers  
 Suite 300  
 1785 E. Sahara Ave.  
 Las Vegas, NV 89104  
 (702) 731-5511

**CITY OF LAS VEGAS**  
 DEPARTMENT OF PUBLIC WORKS

OGDEN AVENUE UNDERPASS AND ROADWAY  
 ARCHITECTURAL DETAILS

DRAWING  
 DAI  
 104 OF 124  
 OGD-DAI

CLV DRAWING NO. 107-V2011

3-2-105