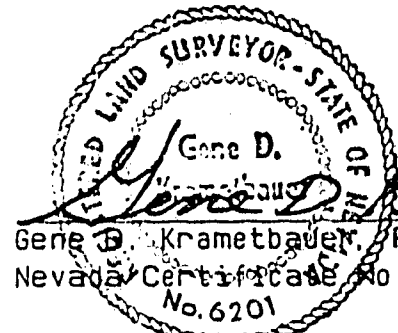
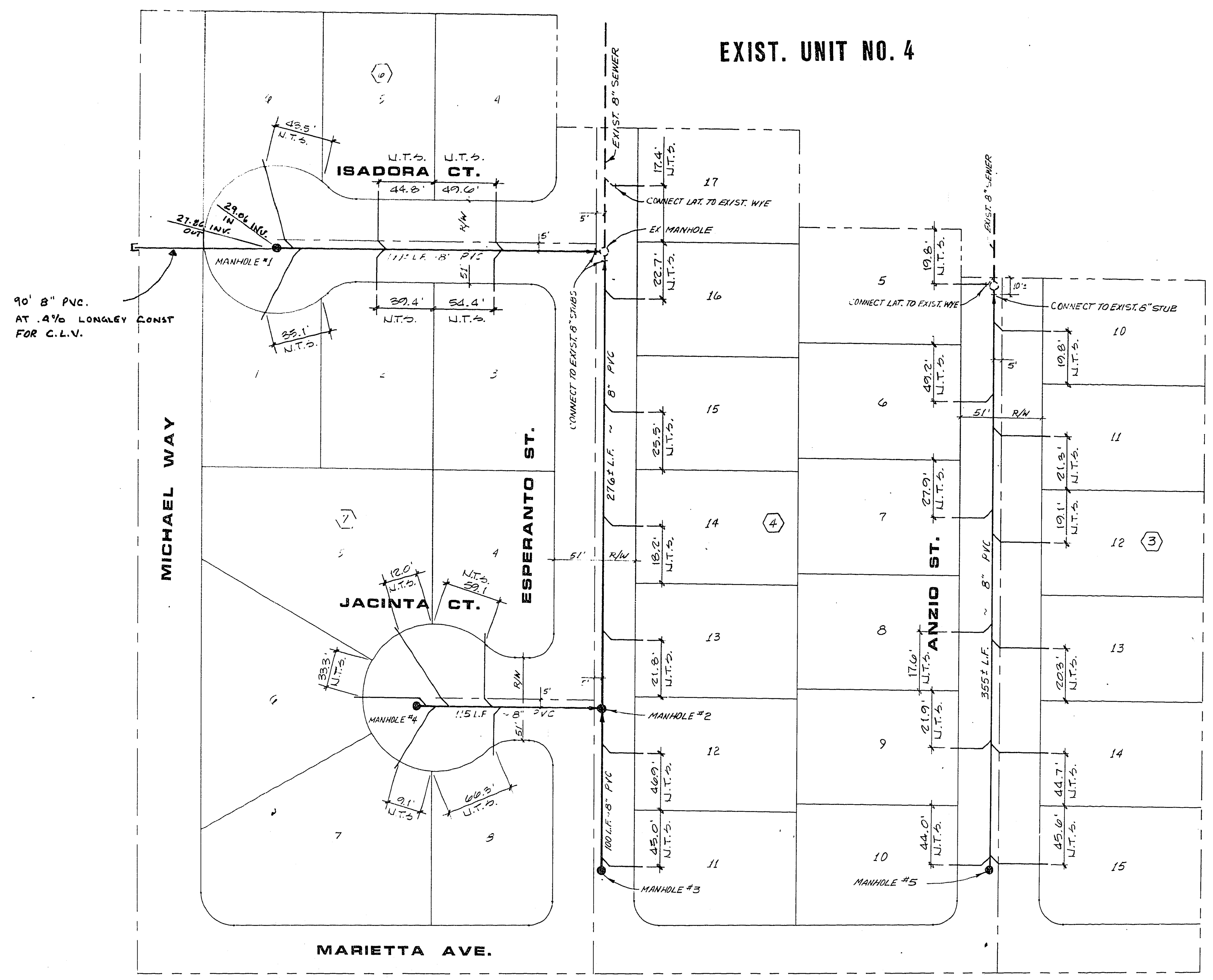


SEWER LATERAL "AS-BUILT" CERTIFICATE



Gene D. Krametbauer, P.E., R.L.S.
 Nevada Certificate No. 6201
 Date: 11/15/82



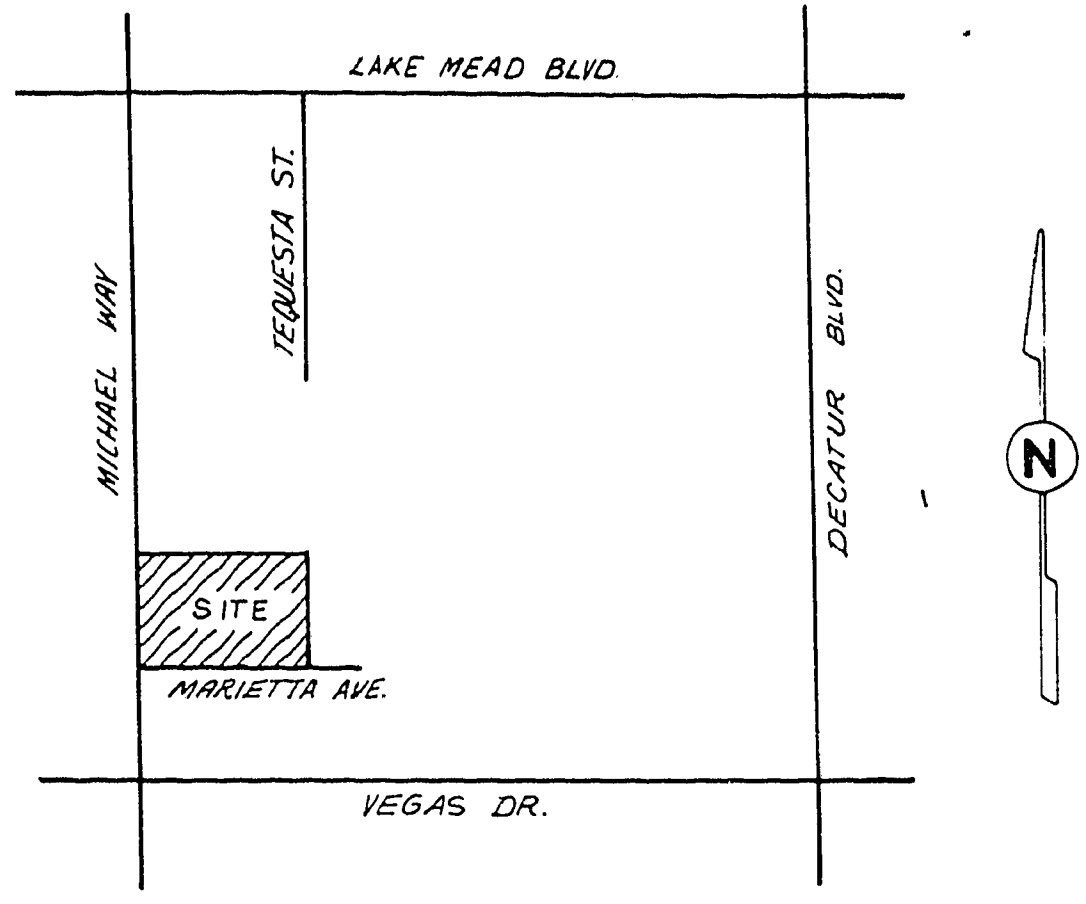
90' 8" PVC.
 AT .4% LONGLEY CONST
 FOR C.L.V.

EXIST. UNIT NO. 4

UNDEVELOPED

BENCH MARK

N.W. CORNER OF MICHAEL WAY & LAKE MEAD BLVD.
 PLATE WITH RIVET AT CURB RETURN C.L.V.
 NO. 050248-10
 ELEVATION = 2228.19 ft.



VICINITY MAP
 N.T.S.

QUANTITY ESTIMATE

1. STD. MANHOLES --- 5 EA.
2. 8" PVC --- 1045 L.F.
3. 4" PVC --- 1700 L.F.

Avoid cutting underground utility lines. It's costly.
Call before you Dig.
 1-800-227-2606
UNDERGROUND UTILITY LINE

UNDEVELOPED

CLV GENERAL NOTES

1. HOUSE SERVICES SHALL COMPLY WITH WESTERN PLUMBING CODE AS TO SEPARATION DISTANCE.
2. ALL HOUSES TO BE SERVED INDIVIDUALLY AS PER SECTION 313 OF THE UNIFORM PLUMBING CODE.
3. CONTRACTOR SHALL FURNISH THE ENGINEER WITH AS-BUILT DRAWINGS SHOWING THE EXACT LOCATIONS OF ALL HOUSE CONNECTIONS.
4. CONCRETE COLLARS TO BE CONSTRUCTED AROUND ALL MANHOLES AND WATER VALVES.
5. CHISEL S OR G WHEREVER SEWER OR GAS LINES PASS UNDER CURB.

REVISION	BY	DATE

PLANNERS
 ENGINEERS
 CONSULTING
 2800 WEST SAHARA AVENUE
 LAS VEGAS, NEVADA 89102
 PHONE (702) 873-7550

MASTER SEWER PLAN

OESTE VILLAS-UNIT NO. 5

WO NO.	2721-5
BY	WDJ
DATE	11/2/83
SCALE	1" = 40'

SHEET
7
 OF 12 SHEETS

Gene D. Krametbauer
 CLV CHIEF, LAND DEVELOPMENT & FLOOD CONTROL
 DATE: 11/10/82