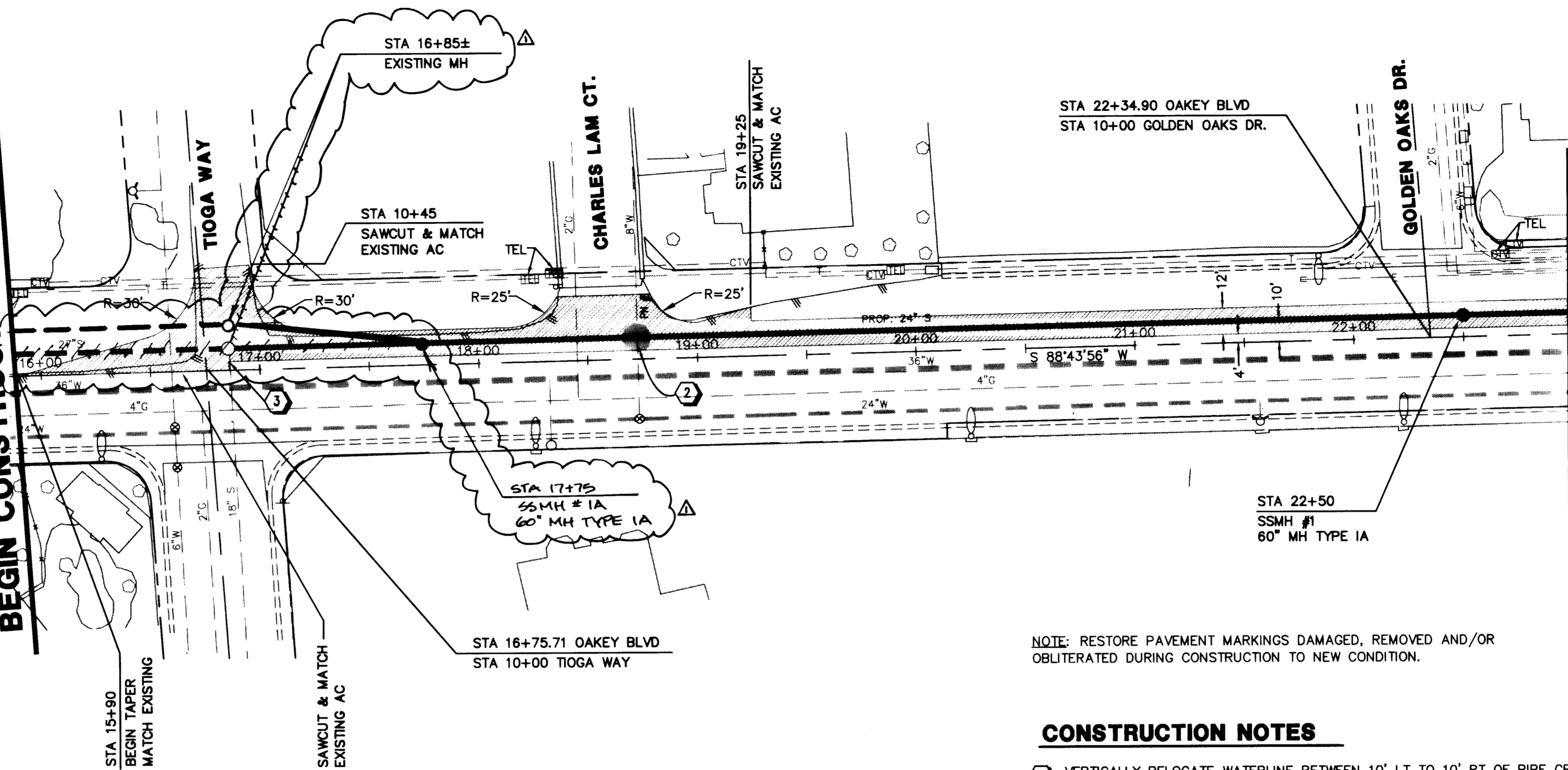


PROJECT LIMITS
BEGIN CONSTRUCTION STA 15+90



MATCHLINE STA. 23+00
SEE SHEET SS2

OAKEY BOULEVARD

1"=40' (HORZ.)
1"=10' (VERT.)

NOTE: RESTORE PAVEMENT MARKINGS DAMAGED, REMOVED AND/OR OBLITERATED DURING CONSTRUCTION TO NEW CONDITION.

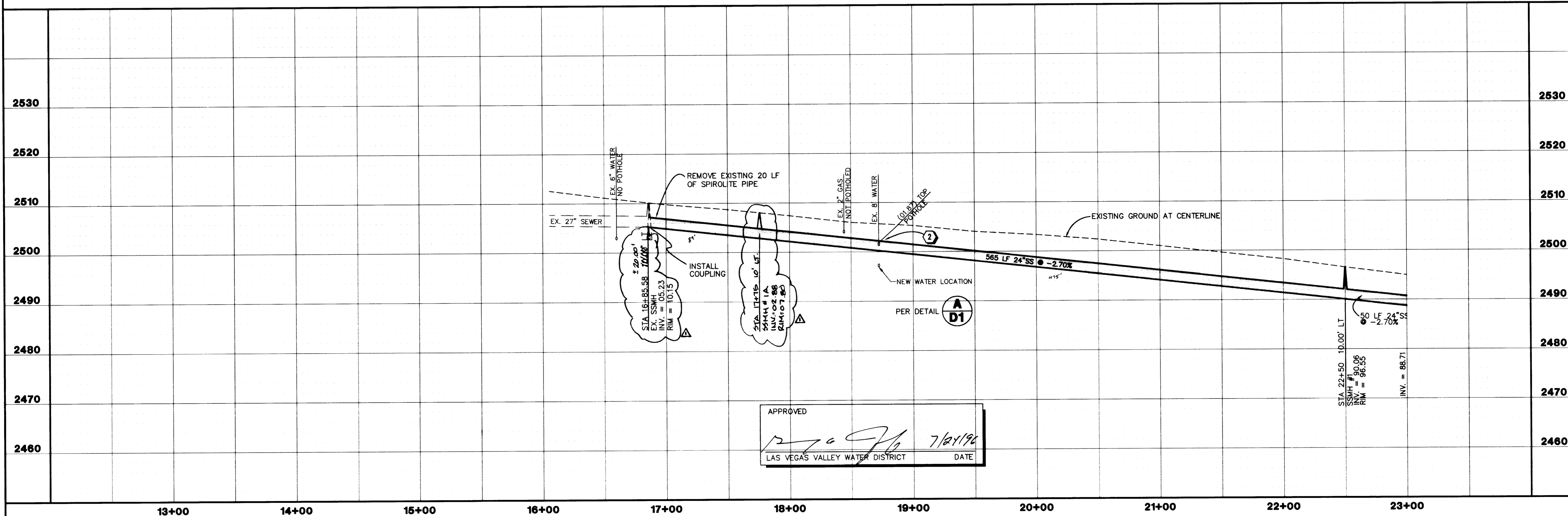
CONSTRUCTION NOTES

- ② VERTICALLY RELOCATE WATERLINE BETWEEN 10' LT TO 10' RT OF PIPE CROSSING PROVIDING 18 IN. VERTICAL SEPARATION (REFER TO DETAIL "A" ON SHEET D1)
- ③ PLUG EXISTING 18" SANITARY SEWER WITH REMOVABLE PLUG.

AREA OF AC REMOVAL AND REPLACEMENT

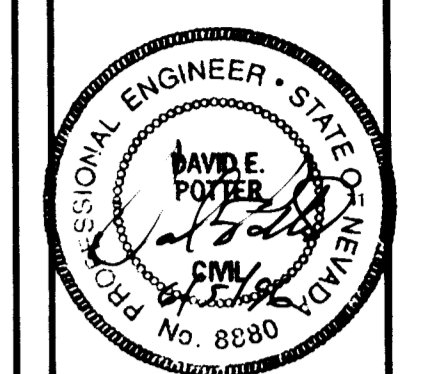
AS BUILT

Call before you Dig.
1-800-227-2600



APPROVED
[Signature]
LAS VEGAS VALLEY WATER DISTRICT DATE 7/24/96

NO.	REVISIONS	DESCRIPTION/DATE	BY
1	REVISED	ADJUSTED	TL
2	REVISED	ADJUSTED	TL



1100 GRIER DRIVE
LAS VEGAS, NEVADA 89119
PHONE (702) 361-9050
FAX (702) 361-0659
SEA
INCORPORATED
CONSULTING ENGINEERS

NEVADA
Call before you Dig.
1-800-227-2600

SEWER PLAN AND PROFILE
FROM STA. 16+00 TO STA. 23+00
OAKEY BOULEVARD
TIOGA WAY TO RAINBOW BOULEVARD
CLARK COUNTY
CITY OF LAS VEGAS

JOB NO.:	2-241-081
ACAD FILE:	OAKSSPP1.DWG
DESIGNED:	TL
DRAWN:	TL
CHECKED:	DP
DATE:	MAY 1996

SS1
5 OF 9 SHEETS

