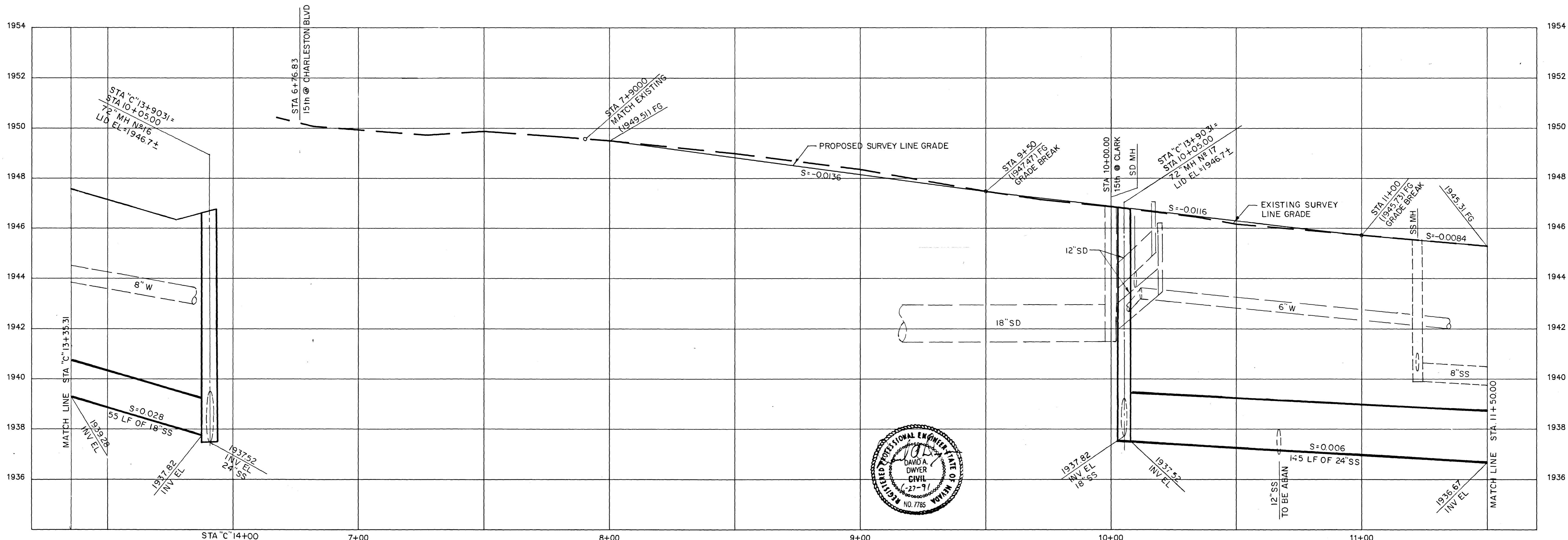
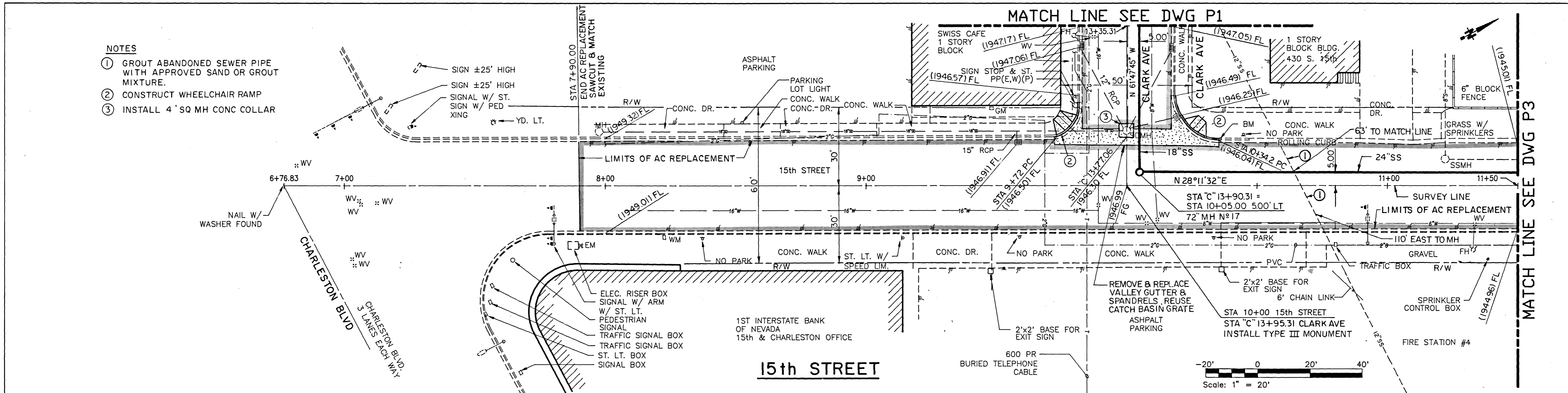


NOTES

- ① GROUT ABANDONED SEWER PIPE WITH APPROVED SAND OR GROUT MIXTURE.
- ② CONSTRUCT WHEELCHAIR RAMP
- ③ INSTALL 4' SQ MH CONC COLLAR



| | | | | | | | |
|---------------|------------------|---------|------|---|---------------------------------|---------------------------------|---|
| DESIGNED: MSL | PROJECT ENGINEER | 7/14/91 | DATE | <p>Boyle Engineering Corporation 1785 E. Sahara Ave. 300 Las Vegas, NV 89104 (702) 731-5511</p> | <p>CITY OF LAS VEGAS</p> | OGDEN/CEDAR SEWER INTERCEPTOR | <p>DRAWING P2 OF 29 307-V681</p> |
| DRAWN: WJH | PROJECT MANAGER | 7-4-91 | DATE | | | 15th STREET | |
| CHECKED: DAD | AL-OGP2 | | | | | PLAN & PROFILE STA 9+40 - 11+50 | |