

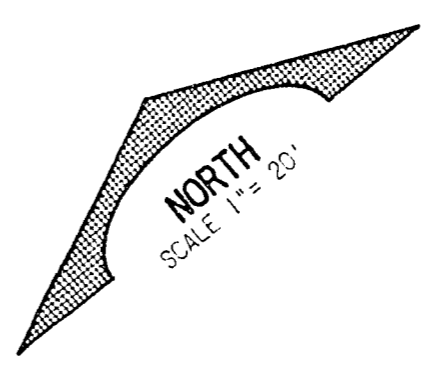
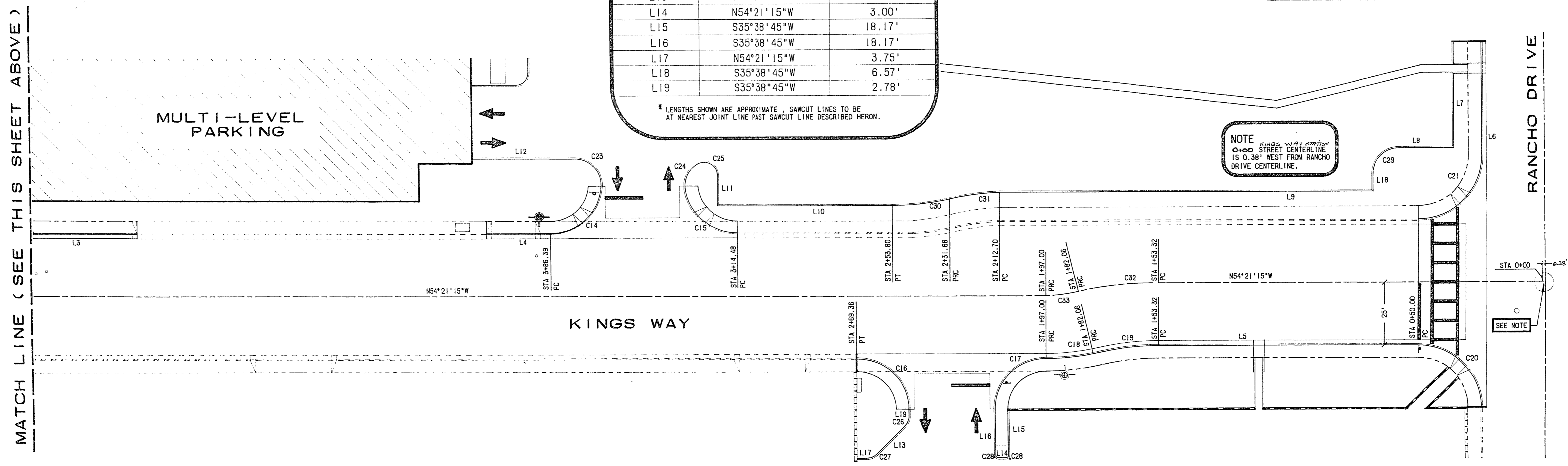
LINE DATA

LINE	BEARING	LENGTH
L1	S00°40'36"W	54.00'
L2	N89°19'24"W	27.80'
L3	N54°21'15"W	46.14' *
L4	N54°21'15"W	29.66' *
L5	N54°21'15"W	101.32'
L6	S35°38'45"W	44.88'
L7	S35°38'45"W	29.36'
L8	N54°21'15"W	21.02'
L9	N54°21'15"W	144.68'
L10	N54°21'15"W	67.69'
L11	N35°38'45"W	11.79'
L12	N54°21'15"W	40.11'
L13	S80°38'45"W	16.10'
L14	N54°21'15"W	3.00'
L15	S35°38'45"W	18.17'
L16	S35°38'45"W	18.17'
L17	N54°21'15"W	3.75'
L18	S35°38'45"W	6.57'
L19	S35°38'45"W	2.78'

* LENGTHS SHOWN ARE APPROXIMATE. SAWCUT LINES TO BE AT NEAREST JOINT LINE PAST SAWCUT LINE DESCRIBED HEREON.

CURVE DATA

CURVE	DELTA	RADIUS	LENGTH
C1	24°01'18"	115.50'	48.42'
C2	166°02'24"	3.50'	10.14'
C3	91°06'57"	5.00'	7.99'
C4	47°54'45"	29.50'	24.67'
C5	78°57'13"	5.00'	6.89'
C6	78°06'45"	5.00'	6.82'
C7	14°08'55"	42.00'	10.37'
C8	148°28'19"	3.50'	9.07'
C9	156°17'34"	3.50'	9.55'
C10	08°43'43"	115.00'	17.52'
C11	92°43'34"	75.50'	122.19'
C12	77°50'20"	20.00'	27.17'
C13	87°13'56"	20.00'	30.45'
C14	82°16'53"	20.00'	30.12'
C15	82°15'36"	20.00'	28.72'
C16	90°00'00"	20.00'	31.42'
C17	90°00'00"	20.00'	31.42'
C18	13°29'33"	89.50'	20.69'
C19	13°10'25"	100.50'	23.11'
C20	90°00'00"	25.00'	39.27'
C21	90°01'30"	25.00'	39.28'
C22	89°53'59"	64.00'	100.42'
C23	92°59'43"	10.00'	16.23'
C24	66°36'29"	10.00'	11.63'
C25	121°55'03"	5.00'	10.58'
C26	45°00'00"	5.00'	3.93'
C27	45°00'00"	5.00'	3.93'
C28	90°00'00"	1.00'	1.58'
C29	90°00'00"	10.50'	16.49'
C30	13°28'26"	94.50'	22.23'
C31	11°32'19"	95.71'	19.27'
C32	13°10'25"	125.00'	28.74'
C33	13°10'25"	65.00'	14.95'
C34	90°00'00"	70.00'	109.96'



	REVISION DATE
<p style="font-size: x-small;">HEENER ENGINEERING CIVIL ENGINEERING - DESIGN LAND PLANNING & DEVELOPMENT 4441 South Polaris Avenue, Las Vegas, Nevada 89103 Phone: (702) 790-1900</p>	
PALACE STATION HOTEL AND CASINO KINGS WAY HORIZONTAL CONTROL	
SHEET NO. C7.0 9 OF 9 <small>DATE: 09/11/20</small>	

107-V1822
24-3156