

BASIS OF BEARINGS

NORTH 00°06'17" EAST BEING THE EAST LINE OF THE NORTHEAST QUARTER (NE 1/4) OF SECTION 24, TOWNSHIP 19 SOUTH, RANGE 60 EAST, M.D.M., CLARK COUNTY, NEVADA, AS SHOWN BY MAP IN THE OFFICE OF THE CLARK COUNTY, NEVADA RECORDER IN FILE 57 OF SURVEYS PAGE 05.

BENCHMARK

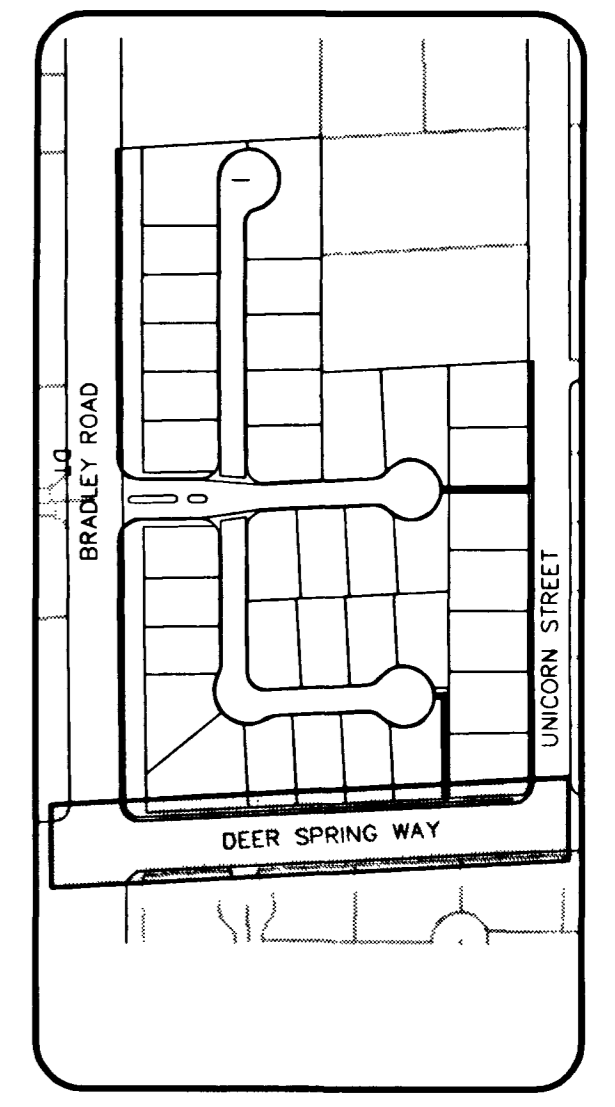
CITY OF LAS VEGAS VERTICAL CONTROL
CITY OF NORTH LAS VEGAS BM #519116 SW COR OF WATER DISTRICT FENCE, DECATUR BLVD & DEER SPRINGS WAY.

STATION 11+90
24E4
ELEVATION = 701.4396 METERS (NAVD88)
2301.306 FEET

CLV BENCHMARK
CITY OF LAS VEGAS VERTICAL CONTROL
BRASS CAP IN CONCRETE AT DECATUR BLVD & DEERSPRINGS (CNLY519116)

STATION 11+90
24E4
AS OF JUNE 3, 2002
ELEVATION = 701.3687 METERS (NAVD88)
2301.07 FEET

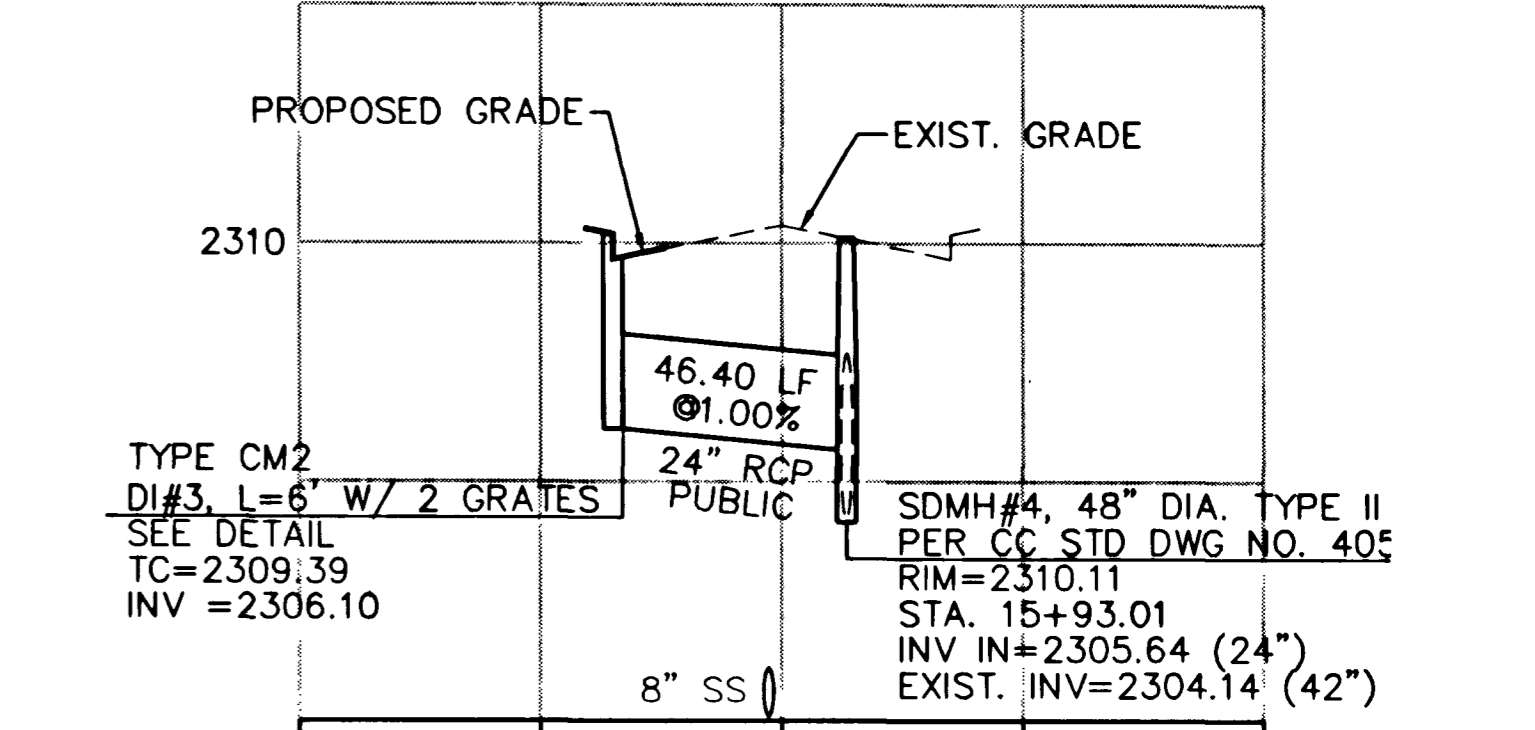
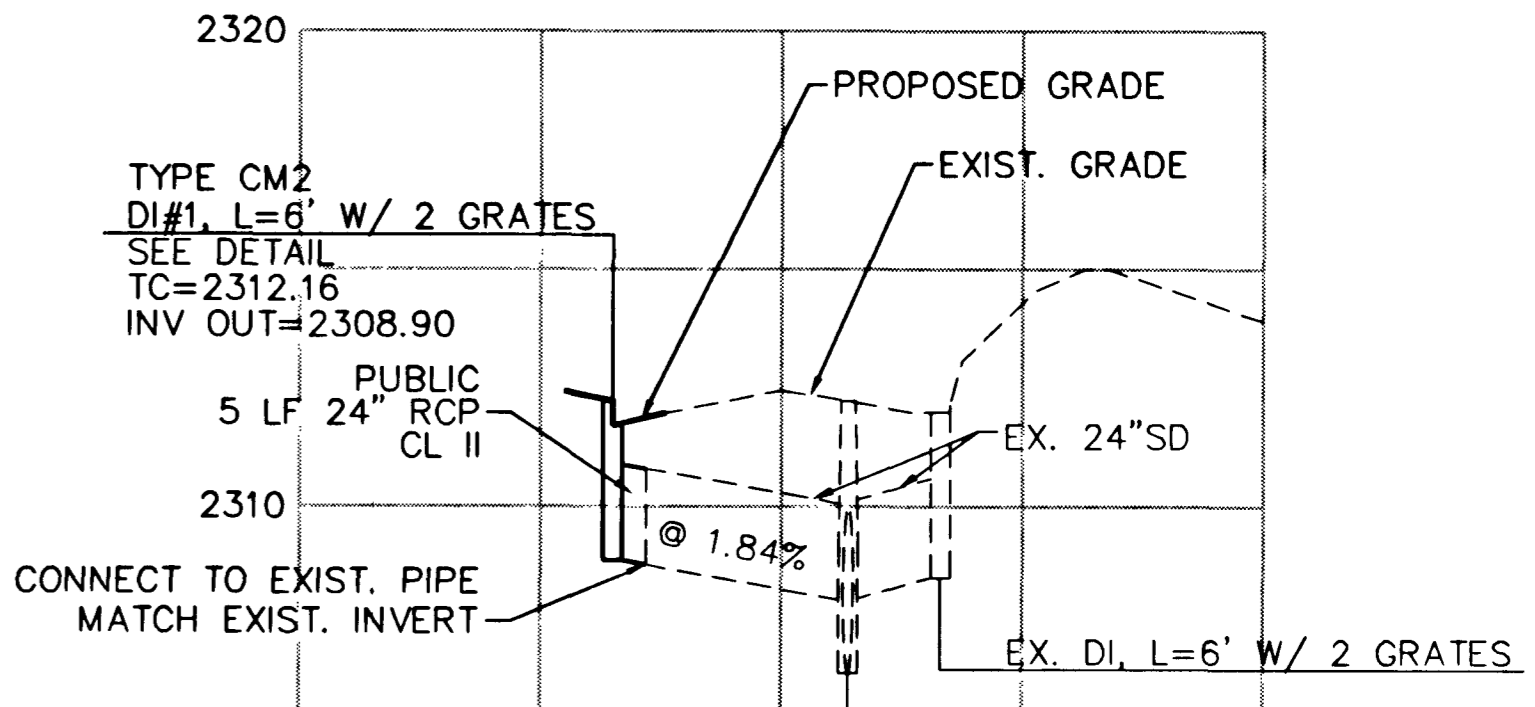
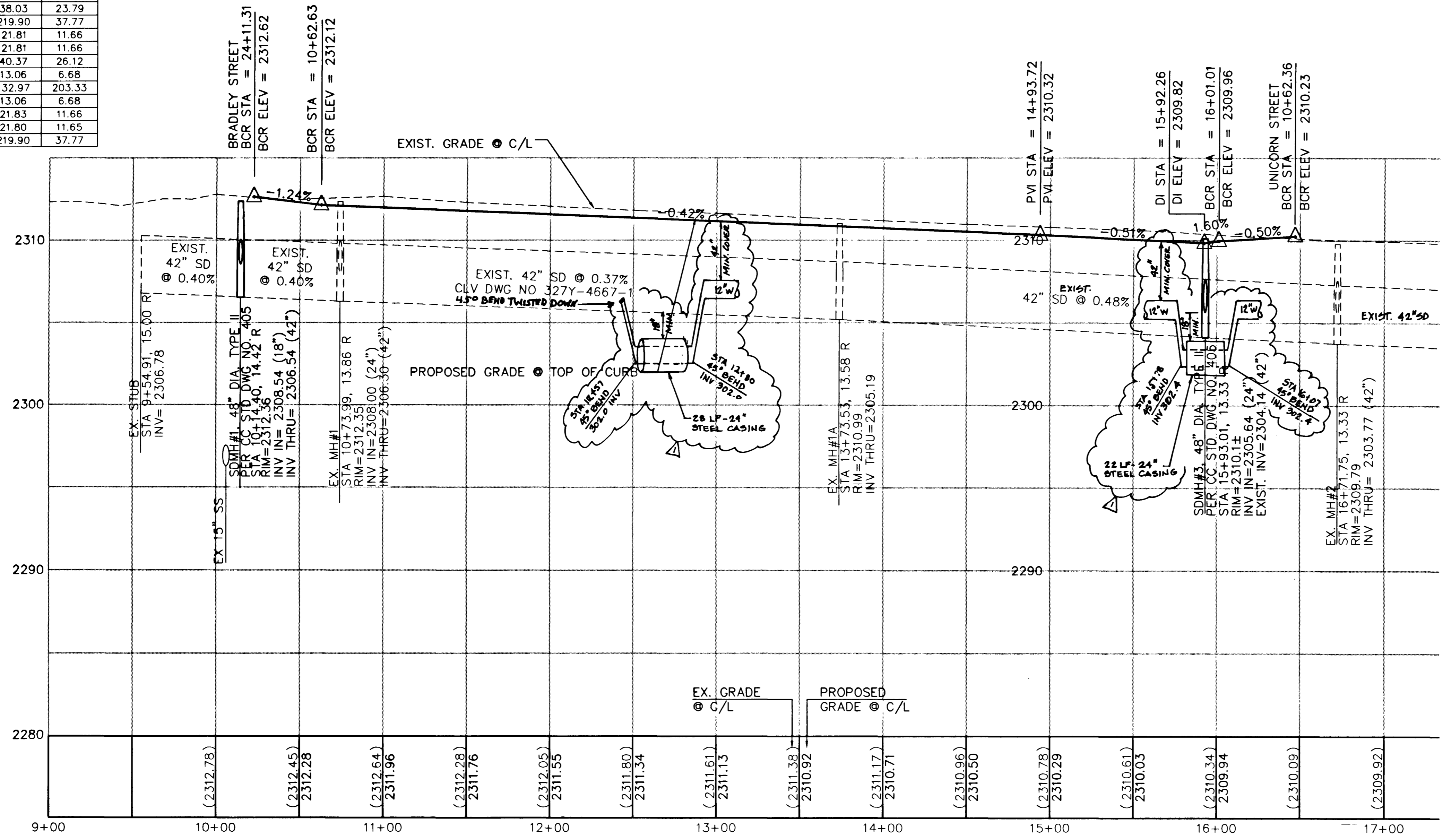
PROJECT BM = CLV BM+0.24



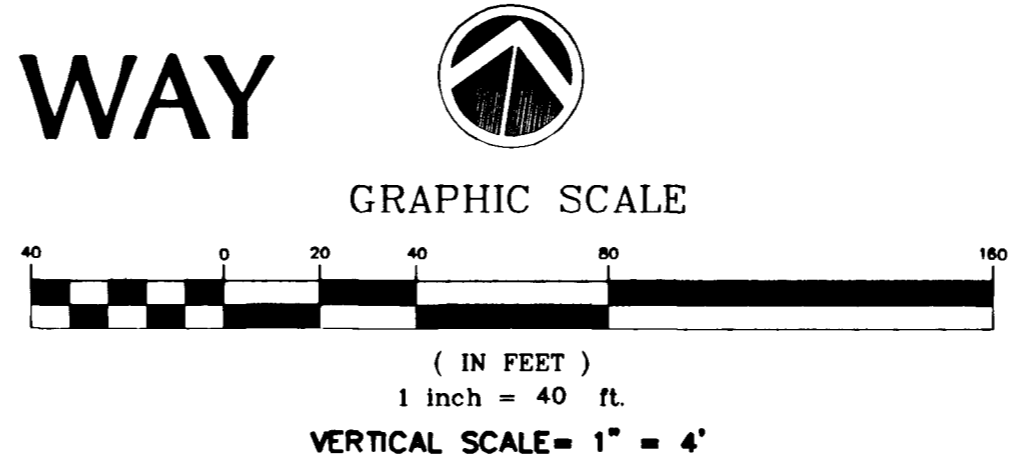
KEYMAP

BACK OF CURB CURVE TABLE

CURVE	DELTA	RADIUS	LENGTH	TANGENT
C1	257°00'31"	45.00	201.85	56.56
C2	77°00'31"	19.50	26.21	15.51
C3	92°31'00"	25.00	40.37	26.12
C4	87°29'00"	25.00	38.17	23.93
C5	90°00'00"	25.00	39.27	25.00
C6	90°00'00"	25.00	39.27	25.00
C9	90°00'00"	30.00	47.12	30.00
C10	90°00'00"	30.00	47.12	30.00
C11	92°27'17"	30.00	48.41	31.31
C12	87°10'03"	25.00	38.03	23.79
C14	279°59'23"	45.00	219.90	37.77
C15	49°59'41"	25.00	21.81	11.66
C16	49°59'41"	25.00	21.81	11.66
C17	92°31'00"	25.00	40.37	26.12
C18	29°55'35"	25.00	13.06	6.68
C19	152°22'10"	50.00	132.97	203.33
C20	29°55'35"	25.00	13.06	6.68
C24	50°01'31"	25.00	21.83	11.66
C25	49°57'51"	25.00	21.80	11.65
C26	279°59'23"	45.00	219.90	37.77



DEER SPRINGS WAY
PUBLIC STREET



NOTICE TO CONTRACTOR !
EXISTING UTILITY LOCATIONS SHOWN HEREON ARE APPROXIMATE ONLY. IT SHALL BE THE CONTRACTOR'S RESPONSIBILITY TO DETERMINE THE EXACT VERTICAL AND HORIZONTAL LOCATION OF ALL EXISTING UNDERGROUND UTILITIES PRIOR TO COMMENCING CONSTRUCTION. NO REPRESENTATION IS MADE THAT ALL EXISTING UTILITIES ARE SHOWN HEREON. THE ENGINEER ASSUMES NO RESPONSIBILITY FOR UTILITIES NOT SHOWN OR UTILITIES NOT SHOWN IN THEIR PROPER LOCATION.

AVOID CUTTING UNDERGROUND UTILITIES. IT'S COSTLY.
CALL before you Dig
1-800-227-2600
UNDERGROUND SERVICE (USA)

AVOID HITTING OVERHEAD POWER LINES. IT'S COSTLY.
CALL BEFORE YOU GO OVERHEAD
CALL 1-702-593-8111

APPROVAL FOR CONSTRUCTION

Las Vegas Valley Water District
12/12/02
DATE

REVISION DESCRIPTION
DATE BY APPROVED BY
12/12/02 [Signature] [Signature]
NO. 1/1/02 [Signature] [Signature]

3610 North Rancho Drive
Las Vegas, Nevada 89130
Telephone: (702) 648-9700
Fax: (702) 648-1143

ENGINEERING
SOUTHWEST

STREET PLAN & PROFILE
DEER SPRING WAY

PARADISE MEADOWS SOUTH

TITLE PROJECT
WORK ORDER NO. 020314
DESIGN BY: TEAM 1
DATE: 10-25-02
SCALE: 1"=40'
CADFILE: PMSSP2
SHEET 7 of 18 SH
CLV DWG NO. 3271-4735