

SIGN NOTES

- 1. INSTALL R-1 "STOP" SIGN (30"x30").
- 2. INSTALL STREET NAME SIGNS, 9" BLADES W/ VIP SHEETING, PER CLARK COUNTY AREA STANDARD DRAWINGS 250 & 251 OR NEWEST REVISIONS. SIGNS SHALL HAVE WHITE LETTERS WITH BLUE BACKGROUND.
- 3. INSTALL "NO PARKING" SIGN R7-1APR (18"x24") ON ST.LT. POLE.
- 4. INSTALL 3" INTERCONNECT W/ P-30 PULL BOX EVERY 500' RUN CONDUIT THROUGH PULL BOX.
- 5. INSTALL TYPE 1 CENTERLINE PER STD. DWG 244.
- 6. INSTALL 8" WIDE REFLECTIVE WHITE EDGE LINE.

NOTE

- 1. GAS STREET LIGHTS TO BE INSTALLED ON PRIVATE STREETS.
- 2. S.V.R.Z. - SIGHT VISIBILITY RESTRICTION ZONE NO OBJECTS OVER 30' ABOVE THE ADJACENT TOP OF CURB ALLOWED. TO BE PRIVATELY MAINTAINED.
- 3. ALL PRIVATE STREETS ARE CLV SEWER & PUBLIC DRAINAGE EASEMENTS TO BE PRIVATELY MAINTAINED.

BENCHMARK

CITY OF LAS VEGAS VERTICAL CONTROL
 CITY OF LAS VEGAS BM #519116 SW COR OF WATER DISTRICT FENCE, DECATUR BLVD & DEER SPRINGS WAY.
 STATION 1LV90 24E4
 ELEVATION= 701.4396 METERS (NAVDB8)
 2301.306 FEET

CLV BENCHMARK
 CITY OF LAS VEGAS VERTICAL CONTROL
 BRASS CAP IN CONCRETE AT DECATUR BLVD & DEERSPRINGS (CNLV519116)
 STATION 1LV90 24E4
 AS OF JUNE 3, 2002
 ELEVATION= 701.3687 METERS (NAVDB8)
 2301.07 FEET

PROJECT BM = CLV BM+0.24'

STREET LIGHT NOTES

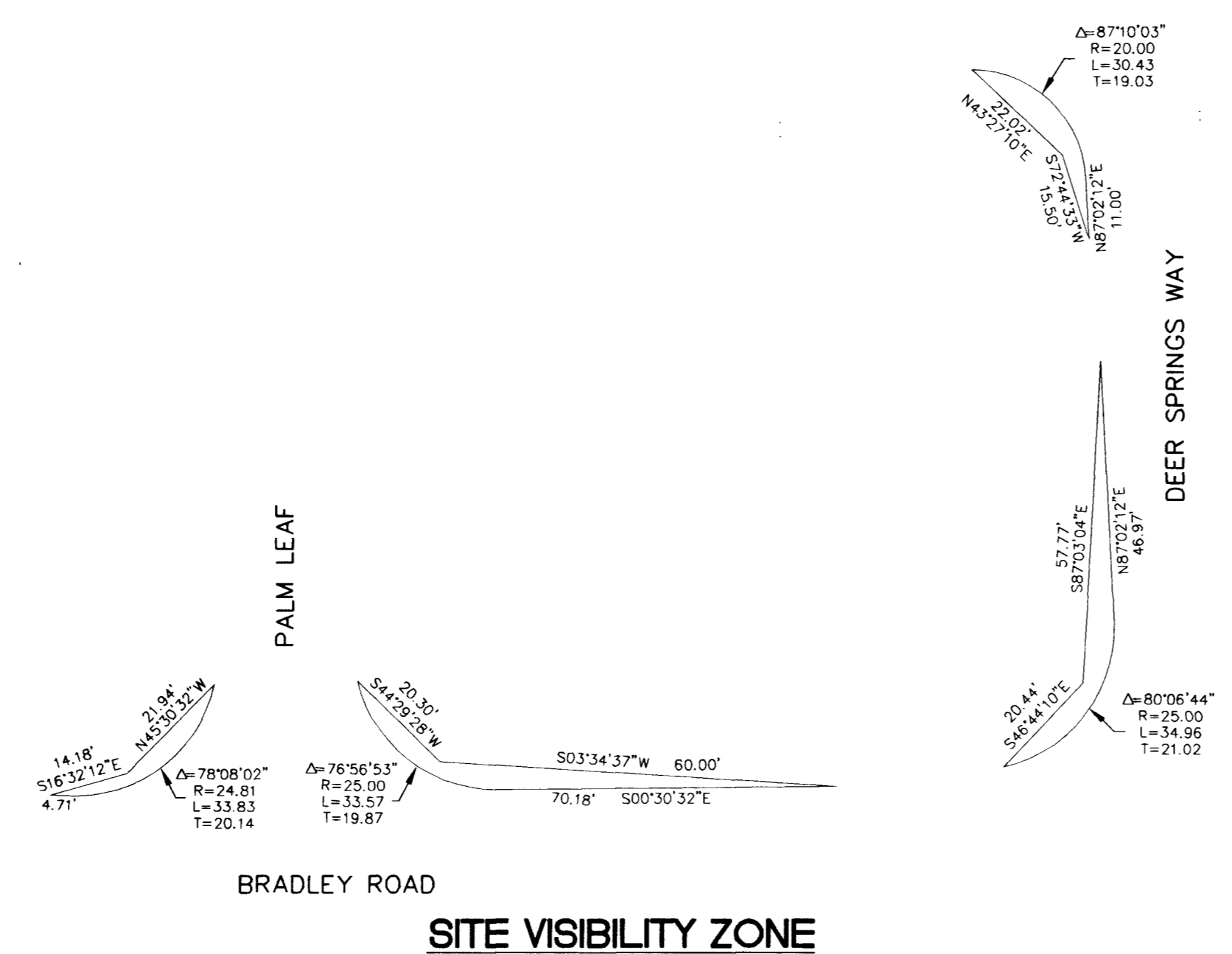
ALL HAND HOLE COVERS MUST BE INSTALLED. POLE CAPS POURED, AND PULL BOX LIDS BOLTED DOWN PRIOR TO ENERGIZING CIRCUIT. ALL WIRE MUST HAVE THW INSULATION.

TRAFFIC LUMINAIRES ARE TO BE WIRED CONTINUOUSLY TO METER PEDESTAL USING 2- #10 STR. AND 1-#8 GREEN T.H.W. WIRE. 10 FT. OF SLACK SHALL BE LEFT IN POLE. EACH LUMINAIRE SHALL BE FUSED INDIVIDUALLY WITH A 10 AMP FUSE IN BOTTOM OF METER PEDESTAL.

NOTICE TO CONTRACTOR !

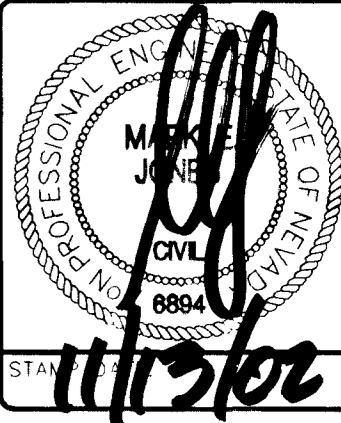
EXISTING UTILITY LOCATIONS SHOWN HEREON ARE APPROXIMATE ONLY. IT SHALL BE THE CONTRACTOR'S RESPONSIBILITY TO DETERMINE THE EXACT VERTICAL AND HORIZONTAL LOCATION OF ALL EXISTING UNDERGROUND UTILITIES PRIOR TO COMMENCING CONSTRUCTION. NO REPRESENTATION IS MADE THAT ALL EXISTING UTILITIES ARE SHOWN HEREON. THE ENGINEER ASSUMES NO RESPONSIBILITY FOR UTILITIES NOT SHOWN OR UTILITIES NOT SHOWN IN THEIR PROPER LOCATION.

CALL before you Dig
 1-800-227-2600
 UNDERGROUND SERVICE (USA)



SITE VISIBILITY ZONE

NO.	DATE	BY	APP'D.	REVISION DESCRIPTION



3610 North Rancho Drive
 Las Vegas, Nevada 89130
 Telephone: (702) 648-9700
 Fax: (702) 648-1143

SOUTHWEST ENGINEERING
 LAND PLANNING • MAPPING • DEVELOPMENT

TRAFFIC PLAN

PARADISE MEADOWS SOUTH
 D.R. HORTON

PROJECT CITY OF LAS VEGAS NEVADA

TITLE PROJECT CITY OF LAS VEGAS

WORK ORDER NO. 020314
 DESIGN BY: JSG
 DATE: 10-25-02
 SCALE: 1"=50'
 CADFILE: pmstp
 SHEET 17 OF 18 SHEETS
 CLV DWG NO. 2674-4735

APPROVAL

(Signature)
 CITY OF LAS VEGAS TRAFFIC ENGINEER DATE

SEE SHEET 2 FOR ADDITIONAL TRAFFIC NOTES