

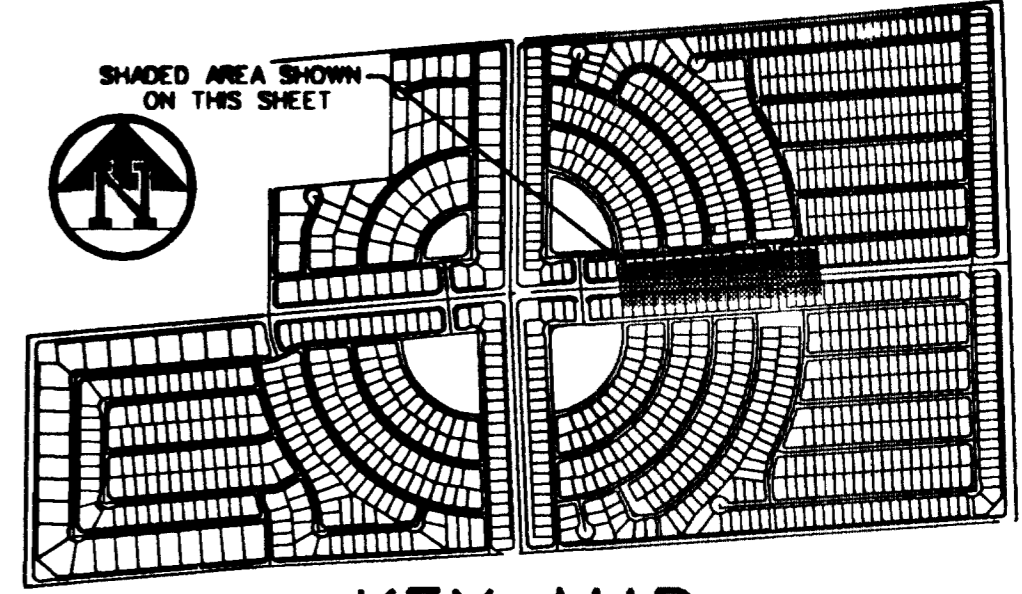
Call before  
you Dig  
1-800-227-2600

**BASIS OF BEARING**

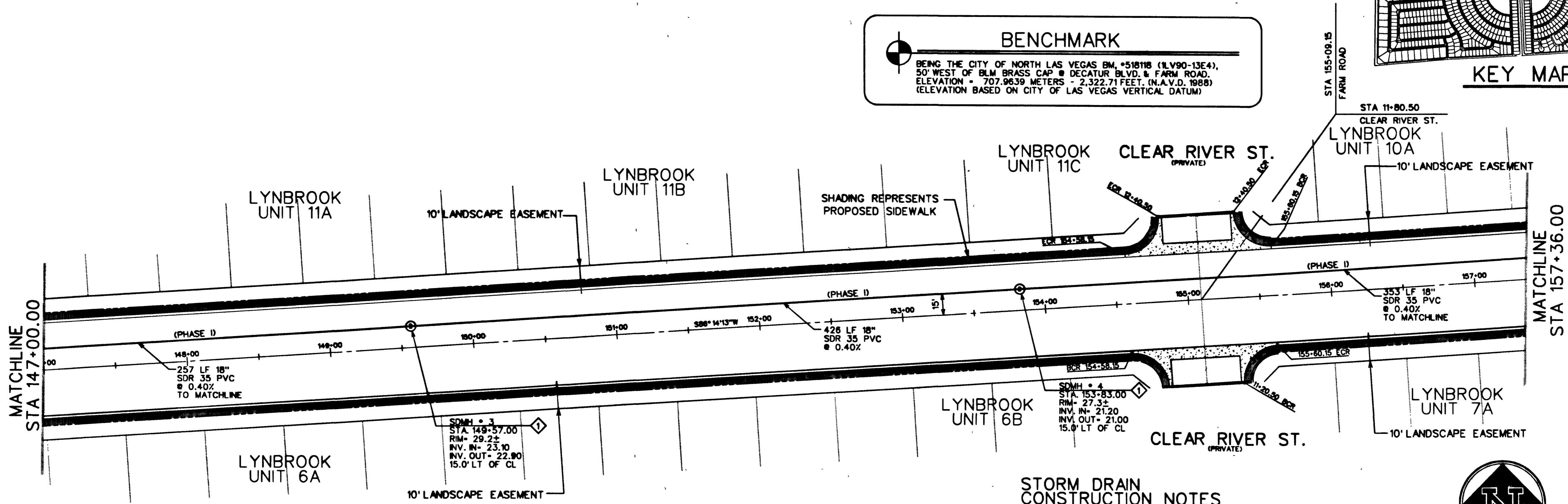
BEING THE NORTH LINE OF THE LOT 83, AS IT IS SHOWN ON THE RECORD OF SURVEY IN FILE 52, OF SURVEYS, PAGE 70, OFFICIAL RECORDS OF CLARK COUNTY, NEVADA, WHICH BEARS: SOUTH 85°04'37" WEST.

**BENCHMARK**

BEING THE CITY OF NORTH LAS VEGAS BM, \*518118 (1LV90-13E4), 50' WEST OF BLM BRASS CAP @ DECATUR BLVD. & FARM ROAD. ELEVATION = 707.9639 METERS = 2,322.71 FEET. (M.A.V.D. 1988) (ELEVATION BASED ON CITY OF LAS VEGAS VERTICAL DATUM)



**KEY MAP**



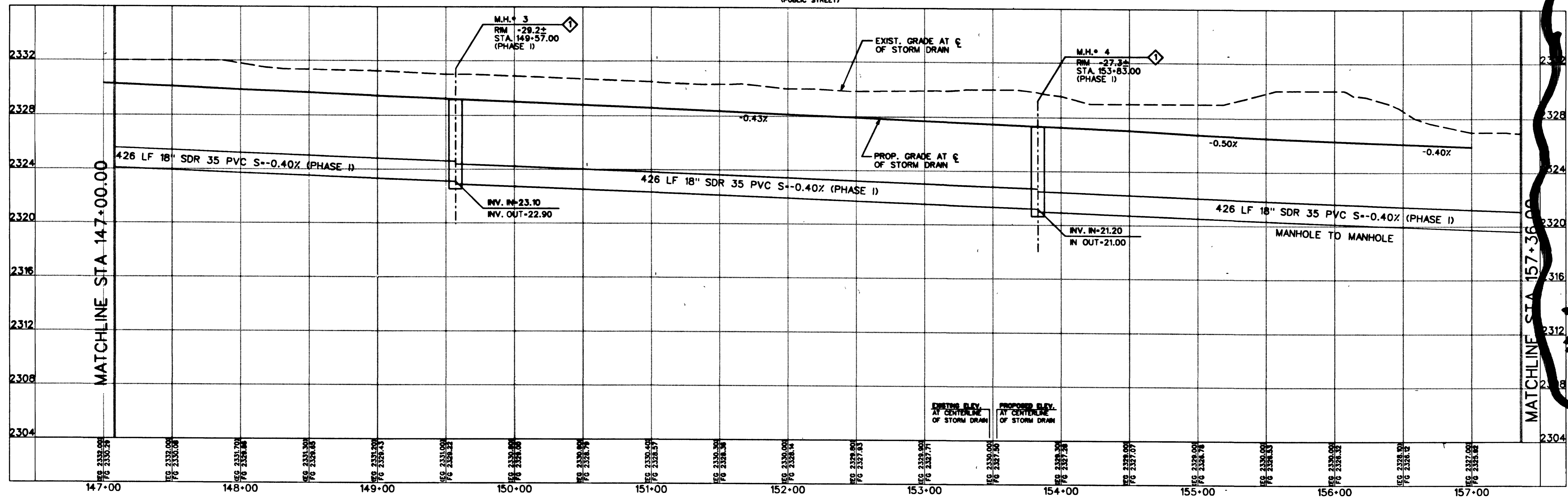
**STORM DRAIN CONSTRUCTION NOTES**

- 1. CONSTRUCT 48" STORM DRAIN MANHOLE "TYPE F" PER CLARK COUNTY AREA STD. DWG. NO. 403
- 2. CONSTRUCT 8" TYPE "C" DROP INLET W/ ONE GRATE PER CLARK COUNTY AREA STD. DWG. NO. 413
- 3. CONSTRUCT 4" TYPE "C" DROP INLET PER CLARK COUNTY AREA STD. DWG. NO. 413
- 4. CONSTRUCT BEZ-VAVE DROP INLET PER CLARK COUNTY AREA STD. DWG. NO. 416
- 5. CONSTRUCT 80" STORM DRAIN MANHOLE "TYPE F" PER CLARK COUNTY AREA STD. DWG. NO. 403

**FARM ROAD**  
(PUBLIC STREET)



SCALE: 1"=40' HORIZ.  
SCALE: 1"=4' VERT.

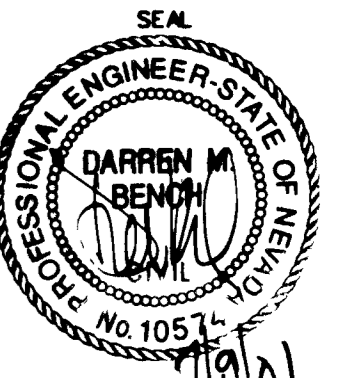


"AS-BUILT"

**THE GATES, L.L.C.**  
 7201 WEST LANE MEAD BOULEVARD  
 SUITE 210  
 LAS VEGAS, NEVADA 89128

**STORM DRAIN PLAN AND PROFILE**  
 STA. 147-08.00 - 157-36.00  
 LYNBROOK FARM ROAD

DRAWN BY: GAWED/NG  
 DESIGNED BY: GB/GAWED/FT  
 CHECKED BY: JBY  
 PROJECT NO:



SHEET  
**SD2**  
 59 OF 61 SHEETS  
 C.L.V. DRAWING NO.  
**3274-4576**