

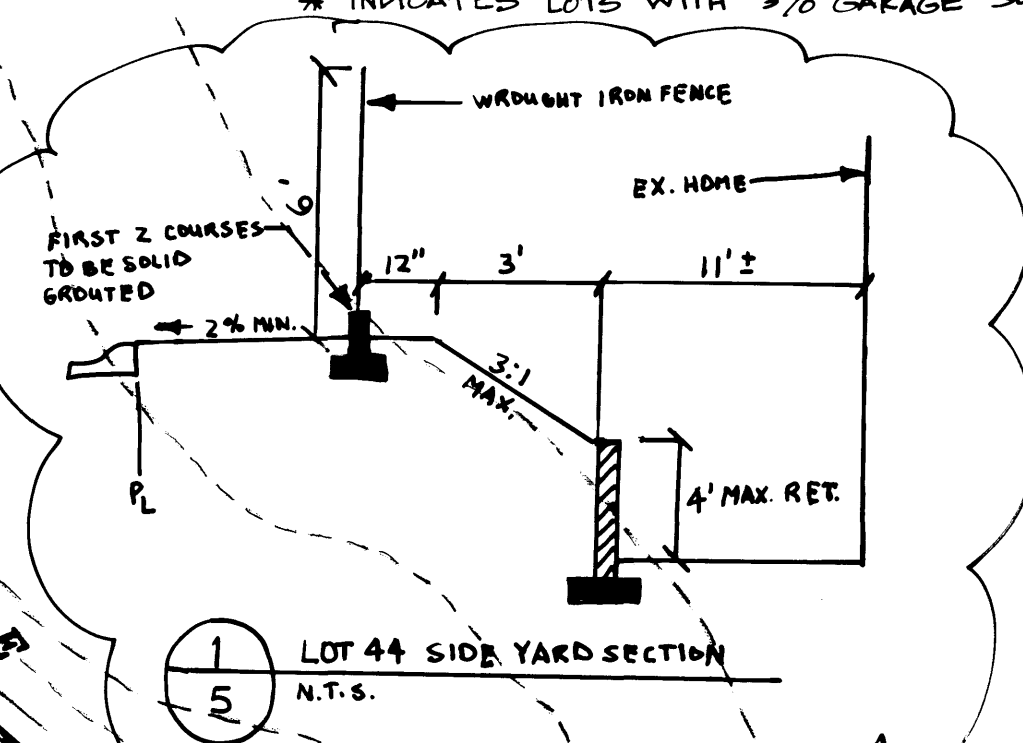
BENCHMARK
 CITY OF LAS VEGAS BENCHMARK 0LV001954 RIVET & PLATE IN TOP OF CURB NW SIDE OF TOWN CENTER DRIVE & SOUTH CIRCLE ISLAND
 ELEVATION = 2728.37 NAVD 1988 (831.6074 M)

NOTE:
 ALL ON SITE STREETS ARE PRIVATELY OWNED AND MAINTAINED

SIDEWALK RAMP TABLE:

RAMP	"A"	"B"
SW1	8.0	8.0
SW2	15	4.5

- LEGEND:**
- [100.00] PROPOSED DESIGN ELEVATION BY OTHERS
 - [100.00] EXISTING ELEVATION
 - AC ASPHALTIC CONCRETE
 - TC TOP OF CURB
 - FG FINISH GRADE
 - GB GRADE BREAK
 - HP HIGH POINT
 - PE PAD ELEVATION
 - FF FINISH FLOOR
 - FL FLOWLINE
 - SW SLOPE DIRECTION
 - GB GRADE BREAK
 - CB CURB & SIDEWALK REMOVAL
 - 2:1 SCARP (TYPICAL)
 - EXISTING CONTOUR (1' INTERVAL)
 - EXISTING CONTOUR (5' INTERVAL)
 - LOT NUMBER
 - PAD ELEVATION FINISH FLOOR ELEVATION
 - BLOCK NUMBER
 - 6" VILLAGE WALL
 - RETAINING WALL
 - DETAIL NUMBER
 - SHEET NUMBER FOR DETAIL
 - CALICHE WALL
 - BACKWATER VALVE



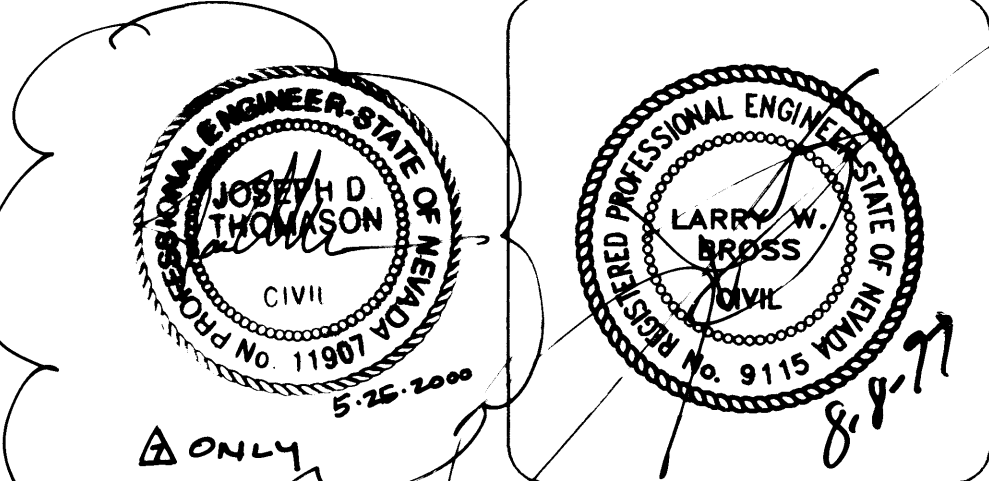
- NOTES:**
- HUNSAKER & ASSOCIATES SHALL BE NOTIFIED IMMEDIATELY OF ANY DISCREPANCIES IN THE PLANS OR CONDITIONS IN THE FIELD.
 - ALL WORK TO BE PERFORMED OUTSIDE OF THE PROJECT BOUNDARY AND ON PRIVATE PROPERTY SHALL NOT BE PERFORMED UNTIL WRITTEN PERMISSION AND EASEMENT HAVE BEEN OBTAINED FROM THE OFFSITE OWNER.
 - FOR AREAS THAT ARE FLATTER THAN 2:1 SLOPE, OR LESS THAN 1' ELEVATION DIFFERENCE, SCARPS ARE NOT SHOWN ON PLAN FOR CLARITY PURPOSES.
 - ADD 2800' TO ALL ELEVATIONS SHOWN.
 - GRADING AND STRUCTURAL SECTIONS SHALL CONFORM TO SOILS REPORT.
 - ALL SLOPE AREAS SHALL HAVE A MINIMUM ONE FOOT SHOULDER NEXT TO WALL PRIOR TO STARTING SLOPE.
 - REFER TO SHEET 14 AND 15 OF 15 FOR SECTIONS AND DETAILS.
 - PAD SECTION SHOWN ON PLANS IS FOR REFERENCE ONLY. FOR ACTUAL SECTION, REFER TO GEOTECHNICAL REPORT FOR SOILS ENGINEERS RECOMMENDATION.

- KEY NOTES:**
- CONSTRUCT 2" AC PAVING OVER 4" TYPE II BASE ON 6" TYPE I BASE PER SIS S-14. SEE SHEET 15 FOR STREET SECTION.
 - CONSTRUCT 8" WIDE CROSS GUTTER PER SIS S-64.
 - CONSTRUCT 30" ROLL CURB PER SIS S-48.
 - CONSTRUCT SIDEWALK RAMP PER SIS S-77; CASE I. REFER TO SIDEWALK RAMP TABLE FOR "A" AND "B" LENGTHS. SIGHT VISIBILITY EASEMENT PER STD. DWG. 404.1600, B = 131 FT.
 - CONSTRUCT "A" CURB PER SIS S-50.
 - CONSTRUCT "L" CURB PER SIS S-47.
 - 10' TRANSITION FROM "L" CURB TO ROLL CURB.
 - 10' TRANSITION FROM ROLL CURB TO DROP INLET ("B" FACE).
 - INSTALL (2) INVERTED "X" BLOCKS IN PRODUCT WALL TO FACILITATE YARD DRAINAGE.

I CERTIFY THAT THIS GRADING PLAN IS IN CONFORMANCE WITH THE APPROVED DRAINAGE STUDY ON FILE AT THE CITY OF LAS VEGAS FOR THIS PROJECT.
 LARRY W. BROSS, P.E. 9115 DATE: 8-19-97

Avoid cutting underground utility lines. It's costly
Call before you Dig
 1-800-227-2600
 UNDERGROUND SERVICE (USA)

Quality Control checked by: [Signature]



PREPARED BY: Planning, Engineering, Surveying
 Hunsaker & Associates
 401 N. BUFFALO DR. SUITE 100
 LAS VEGAS, NEVADA 89128
 (702) 848-4820

SCALE: 1" = 40'
DESIGN BY: GLR/PH
DATE: 1-97
PROJECT NO.: 1922-1
SHEET: 5 OF 15

REVISIONS:

NO.	DATE	BY	REVISION
1	1/10/97	GLR	ISSUED FOR PERMITS
2	1/10/97	GLR	REVISED PER CITY COMMENTS
3	1/10/97	GLR	REVISED PER CITY COMMENTS
4	1/10/97	GLR	REVISED PER CITY COMMENTS
5	1/10/97	GLR	REVISED PER CITY COMMENTS
6	1/10/97	GLR	REVISED PER CITY COMMENTS
7	1/10/97	GLR	REVISED PER CITY COMMENTS
8	1/10/97	GLR	REVISED PER CITY COMMENTS
9	1/10/97	GLR	REVISED PER CITY COMMENTS
10	1/10/97	GLR	REVISED PER CITY COMMENTS
11	1/10/97	GLR	REVISED PER CITY COMMENTS
12	1/10/97	GLR	REVISED PER CITY COMMENTS
13	1/10/97	GLR	REVISED PER CITY COMMENTS
14	1/10/97	GLR	REVISED PER CITY COMMENTS
15	1/10/97	GLR	REVISED PER CITY COMMENTS