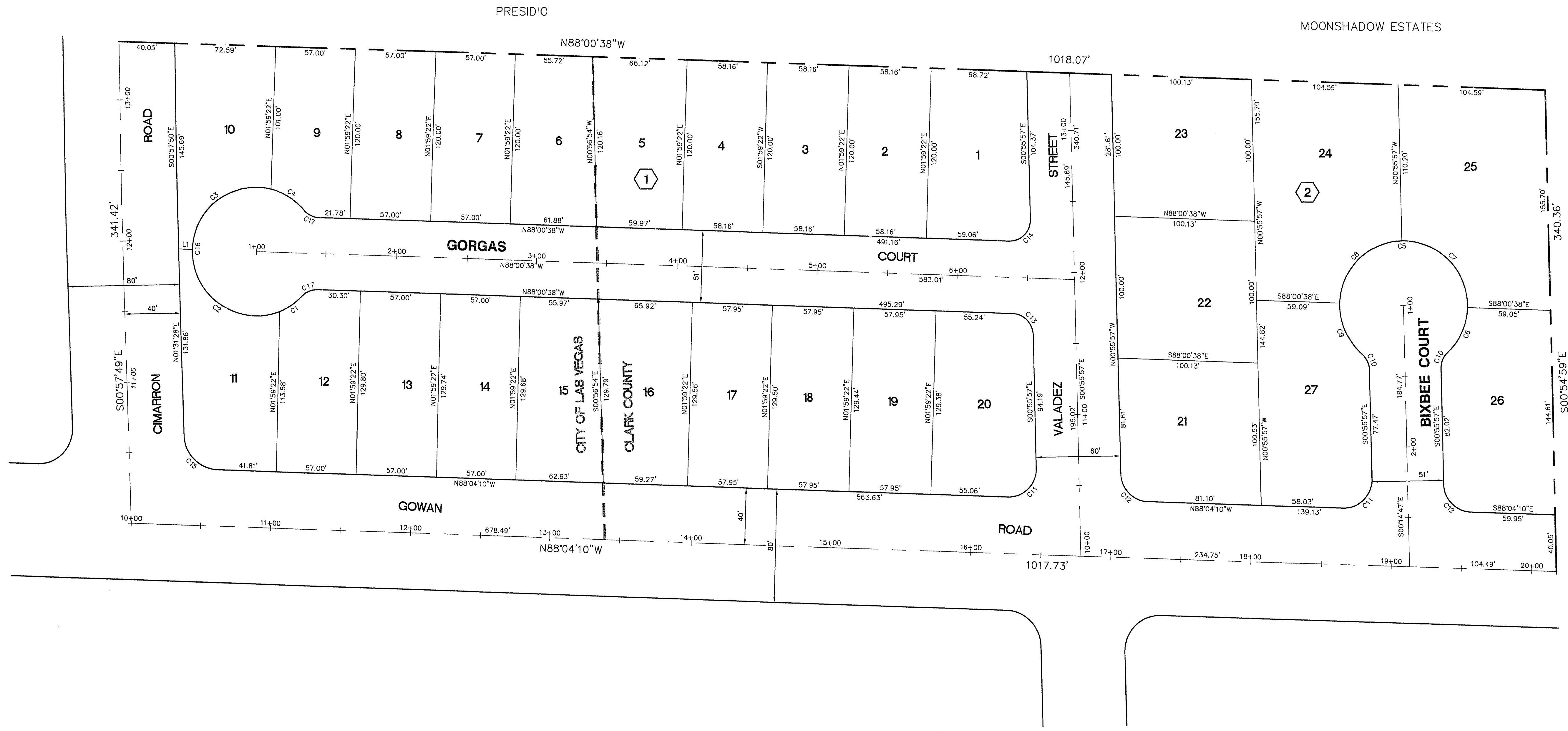
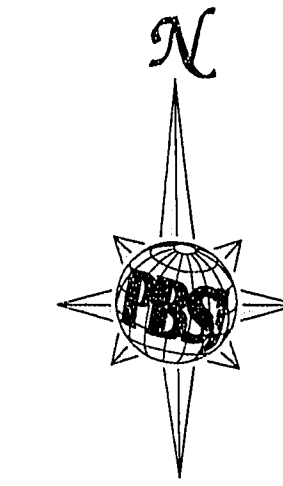
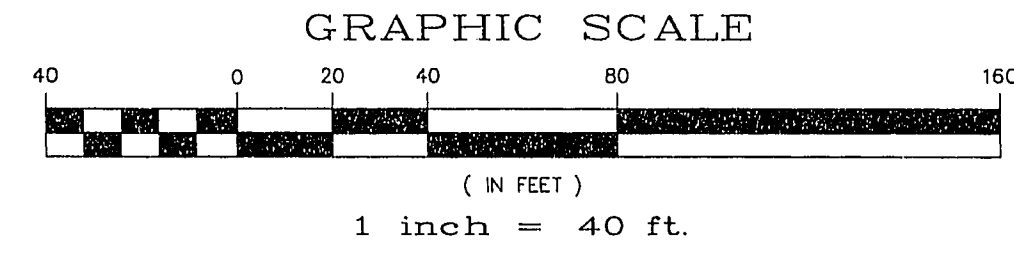


Avoid cutting underground utility lines. Call before you Dig
 Call before you Dig
 1-800-227-2600



LINE DATA TABLE

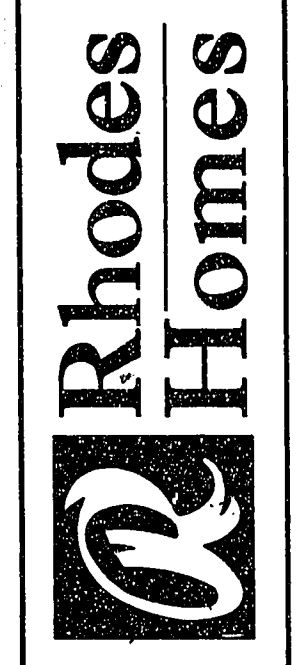
No.	BEARING	DISTANCE
L1	S88°00'38"E	10.01'

CURVE DATA TABLE

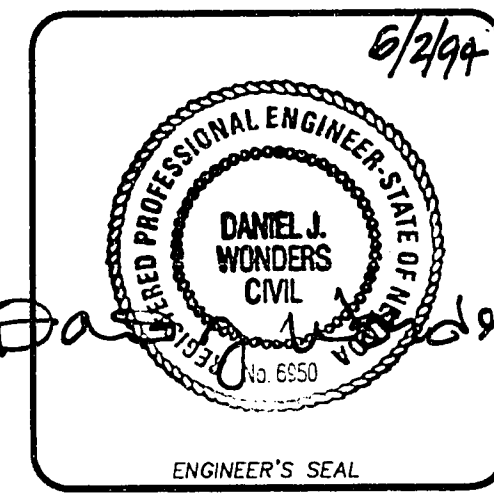
No.	RADIUS	DELTA	LENGTH	TANGENT
C1	45.50'	24°51'12"	19.74'	10.03'
C2	45.50'	113°20'11"	90.00'	69.18'
C3	45.50'	102°03'29"	81.05'	56.25'
C4	45.50'	36°07'54"	28.69'	14.84'
C5	45.50'	275°57'18"	219.14'	---
C6	45.50'	45°03'21"	35.78'	18.87'
C7	45.50'	92°55'18"	73.79'	47.88'
C8	45.50'	87°04'42"	69.15'	43.24'
C9	45.50'	50°53'58"	40.42'	21.65'
C10	15.00'	47°58'39"	12.56'	6.67'
C11	20.00'	92°51'47"	32.42'	21.03'
C12	20.00'	87°08'13"	30.42'	19.02'
C13	15.00'	87°04'42"	22.80'	14.25'
C14	15.00'	92°55'18"	24.33'	15.79'
C15	25.00'	87°06'20"	35.01'	23.77'
C16	45.50'	276°22'46"	219.48'	---
C17	14.50'	48°11'23"	12.20'	6.48'

Job Number	Scale	Drawn by	Checked by	Date	Plot Date	Sheet Number	File No.
7167.620	1" = 40'	WSS	MP	MAY 31, 1994	05/31/94	2 OF 9	620IMP

No.	REVISIONS	Date	Instr.	Appr.	Date



POST, BUCKLEY, BUCKLEY & JERNIGAN, INC.
 6600 West Charleston Blvd.
 Suite 400, Nevada 89102
 Telephone: 702/739-6344
 Facsimile: 702/739-7736
 ENGINEERING • PLANNING • SURVEYING • CONSTRUCTION SERVICES



C:\VMS\620\620-02.dwg May 31 09:31:12 1994 POST, BUCKLEY, BUCKLEY & JERNIGAN, INC. - SCOTT

11-13-83 107Y-4334