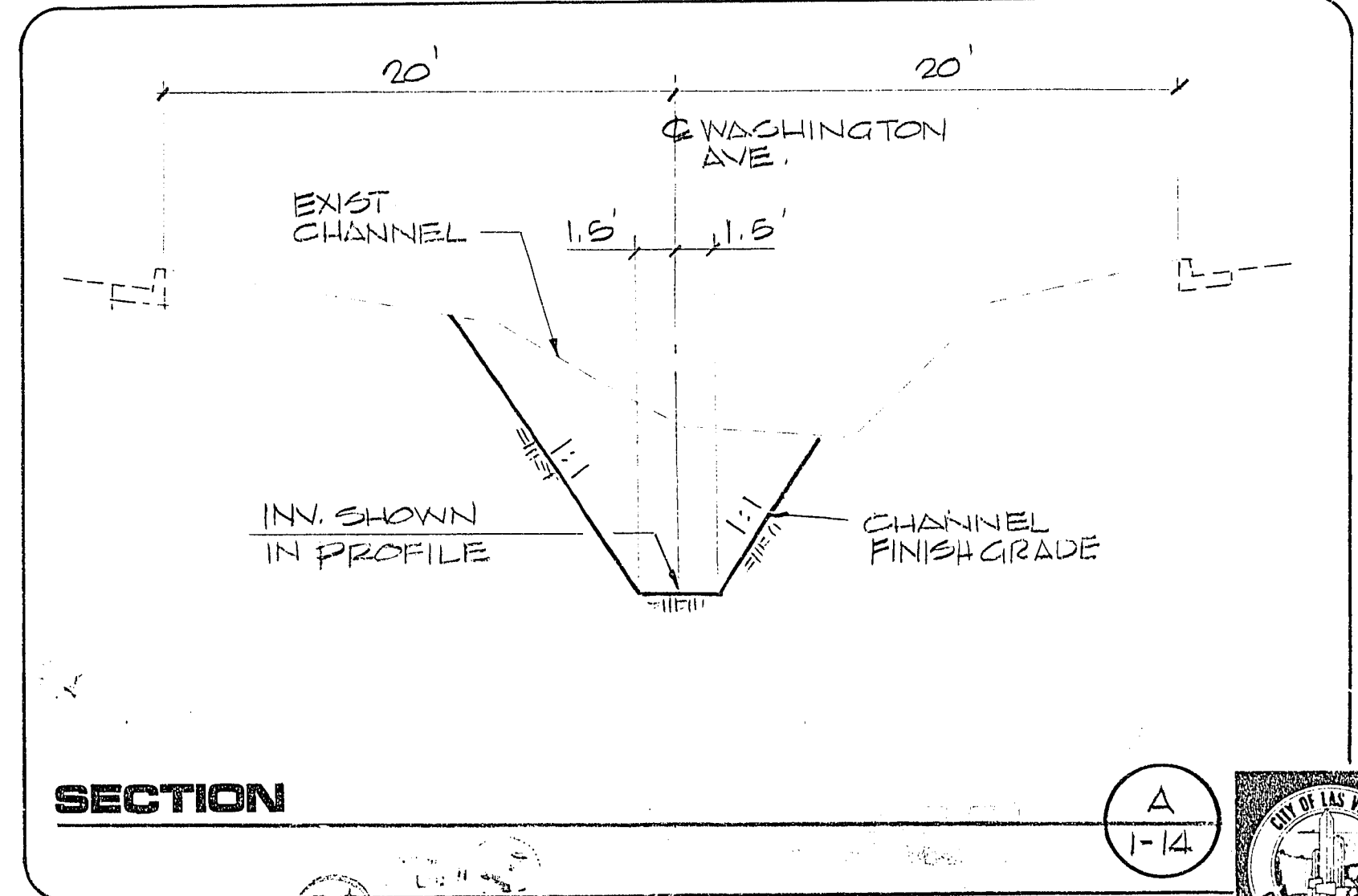
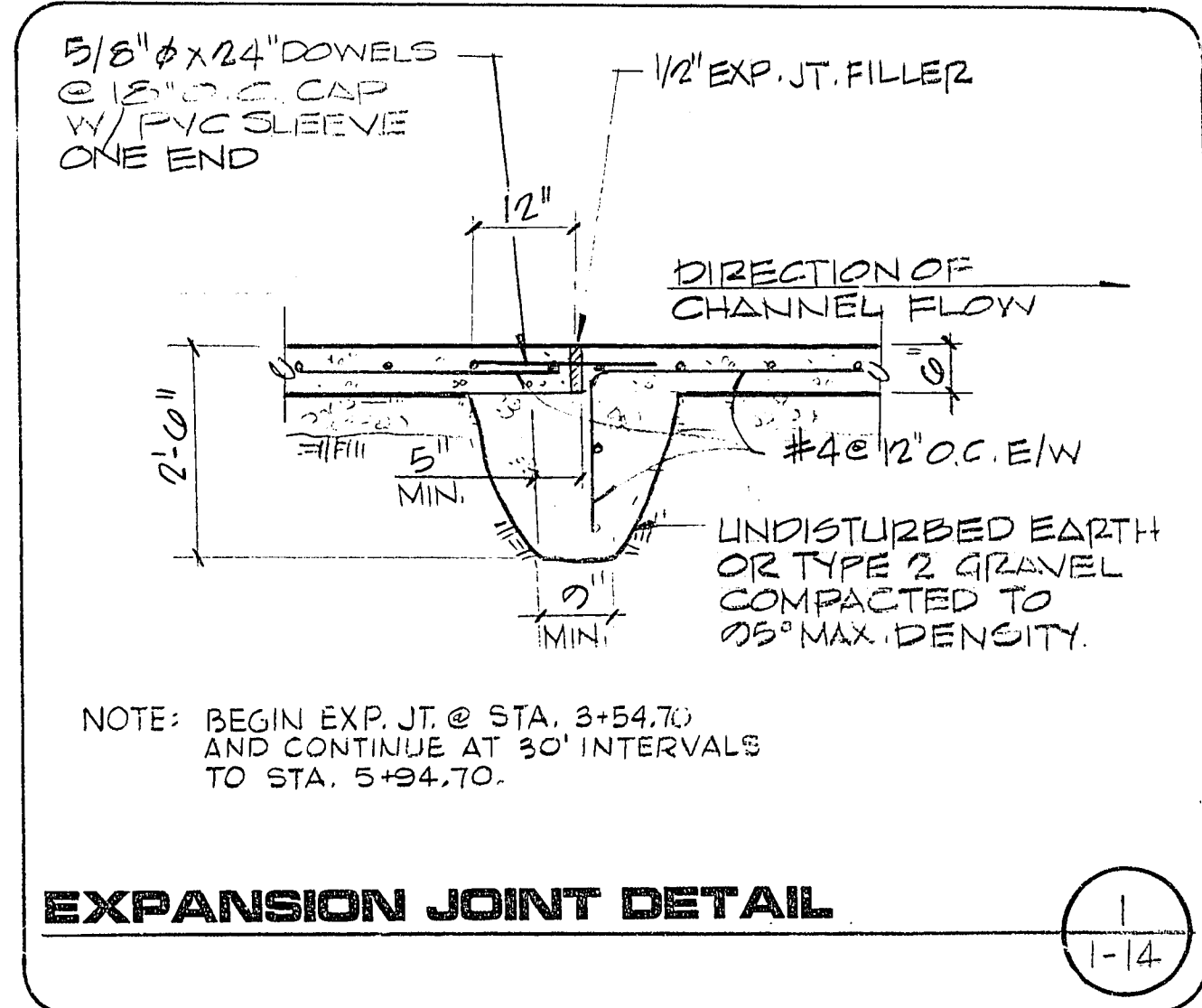
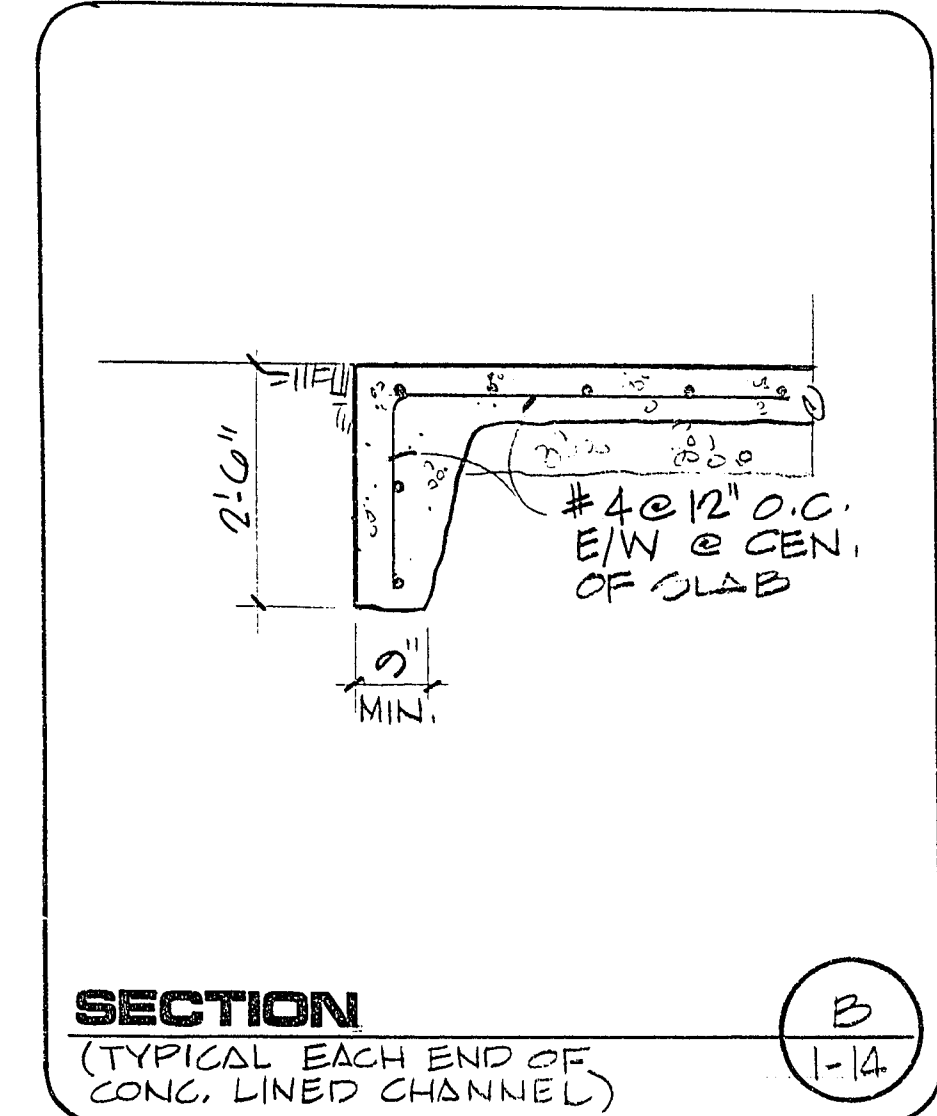
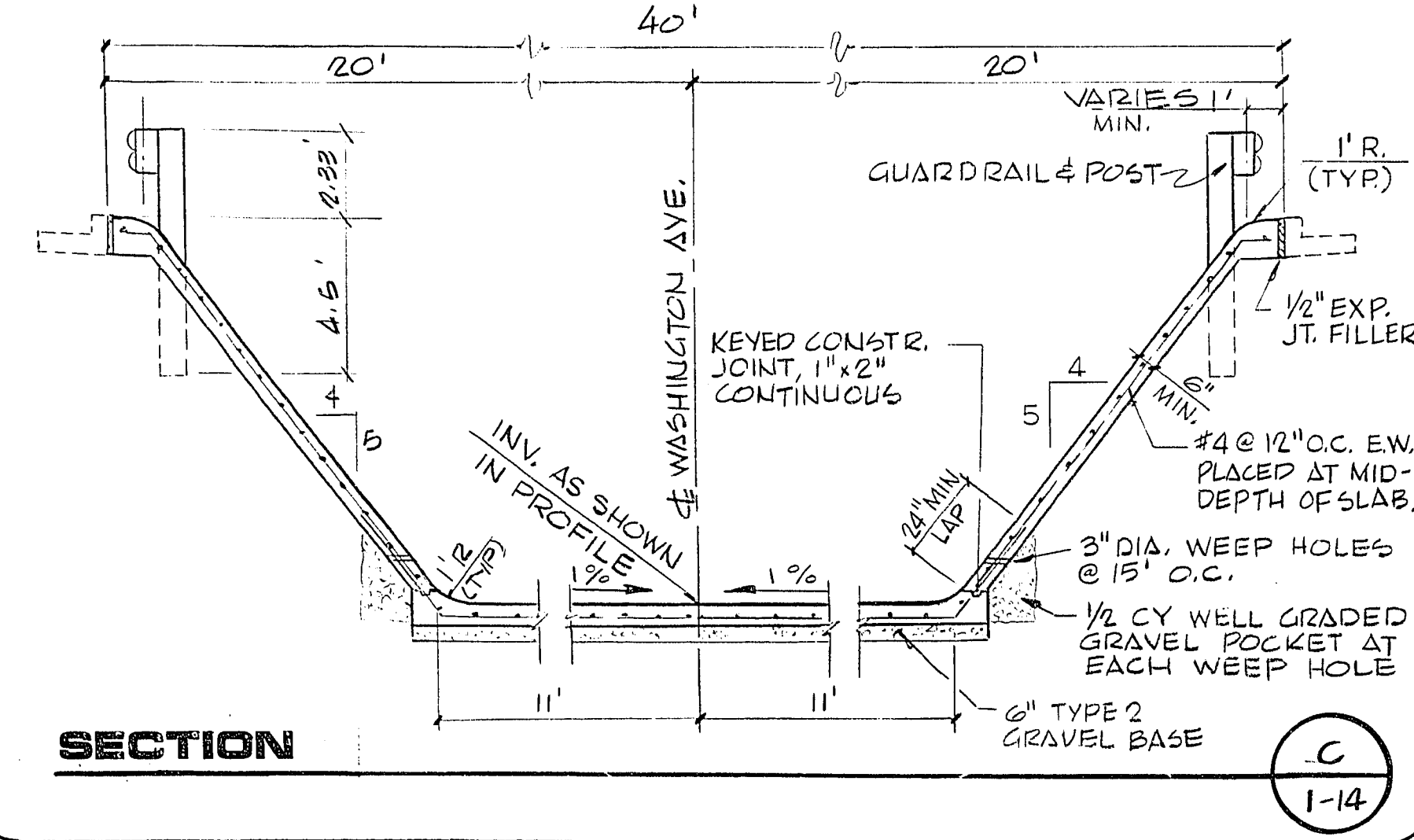


- NOTES:**
- SIDE SLOPES TO BE COMPACTED FILL OR DENSIFIED NATIVE MATERIAL. ALL LOOSE NATIVE MATERIAL SHALL BE REMOVED AND RECOMPACTED TO A MIN. OF 90%.
 - DURING CHANNEL EXCAVATION AND PRIOR TO PLACEMENT OF THE CONCRETE CHANNEL LINING, THE SOIL ENGINEER SHALL INSPECT THE EXCAVATION AND MAKE RECOMMENDATIONS FOR ACCEPTABILITY OF COMPACTED SIDE SLOPE MATERIAL.
 - FACE OF GUARDRAIL SHALL BE LOCATED 6" BEHIND BACK OF CURB.



REVISIONS

NO.	DATE	DESCRIPTION
1	12/17/85	DATE
2	12/17/85	R.E. NO.

REGISTERED PROFESSIONAL ENGINEER
STATE OF NEVADA
CIVIL
G. C. WALLACE

G. C. WALLACE
Consulting Engineers, Inc.
1100 East Sahara Ave. • Las Vegas, Nevada 89104 • 739-3330

DEPARTMENT OF PUBLIC SERVICES
PECOS ROAD
WASHINGTON AVENUE CHANNEL

SHEET
1-14
OF 61 SHEETS

JOB NO. 412.160