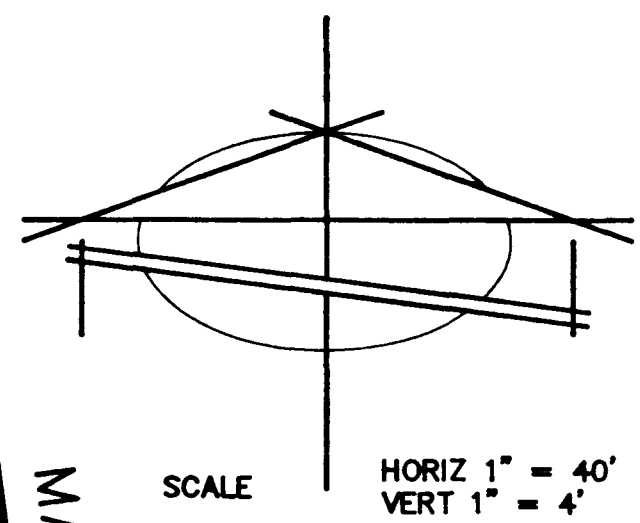
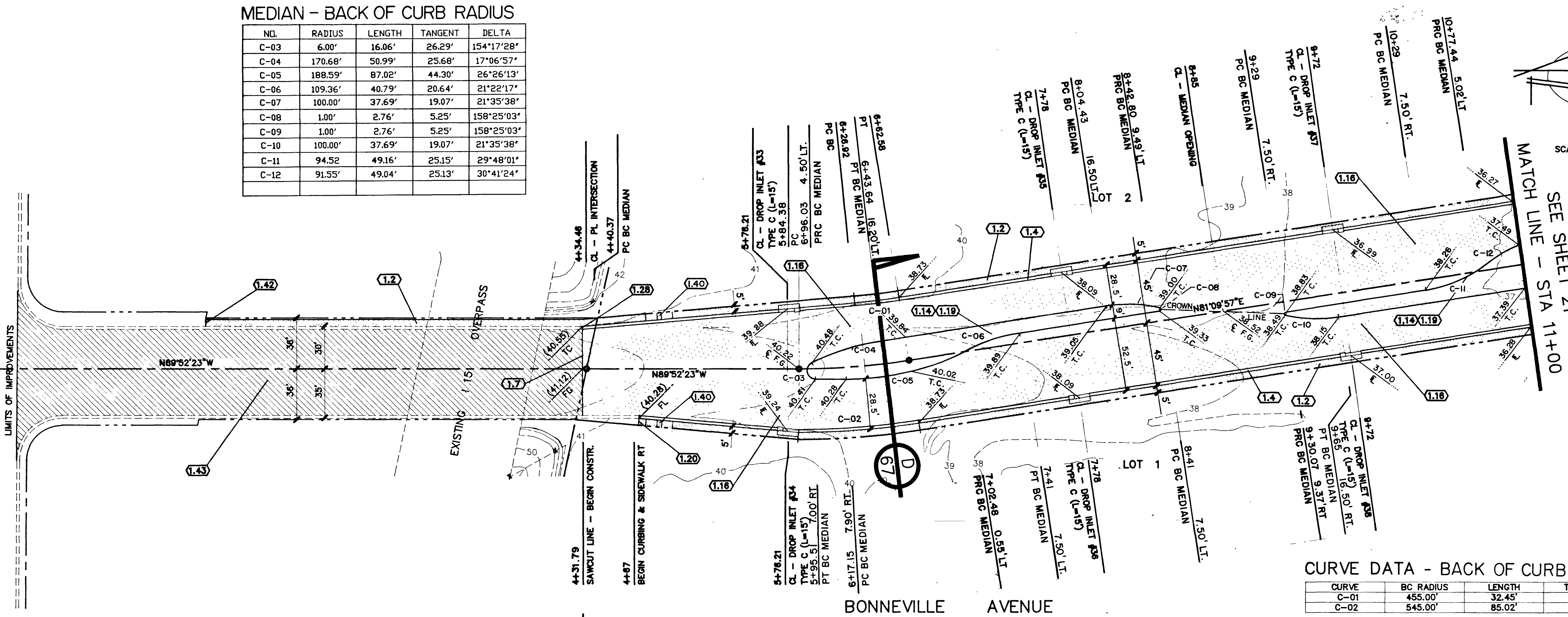


MEDIAN - BACK OF CURB RADIUS

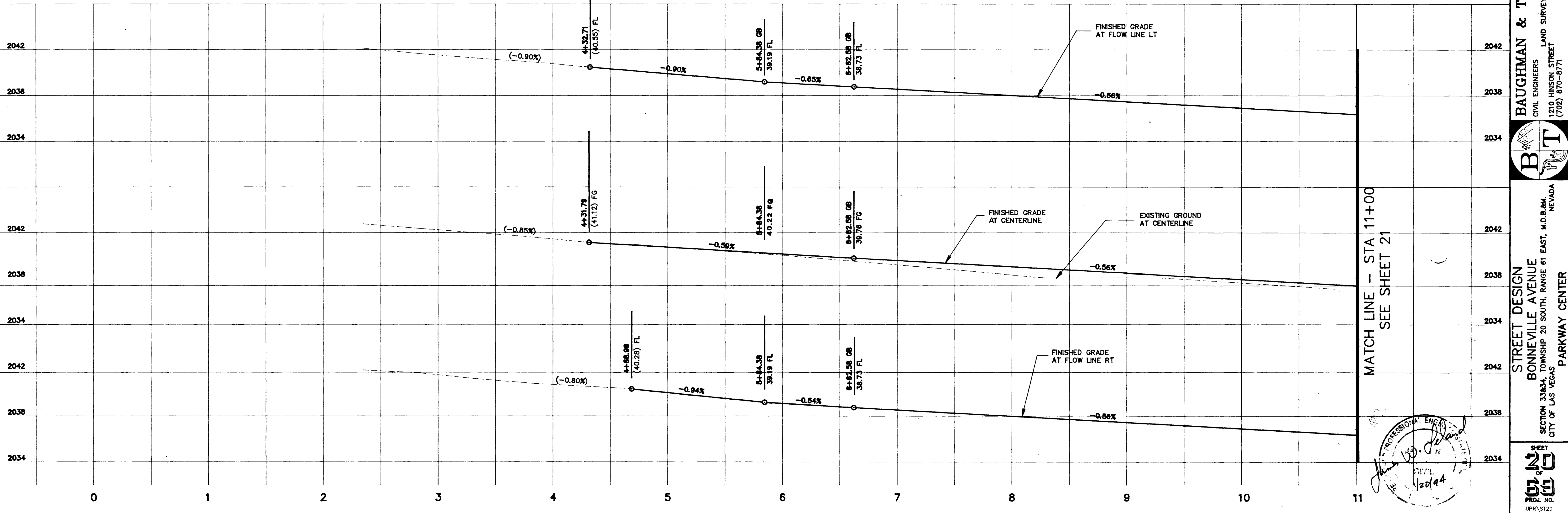
NO.	RADIUS	LENGTH	TANGENT	DELTA
C-03	6.00'	16.06'	26.29'	154°17'28"
C-04	170.68'	50.99'	25.68'	17°06'57"
C-05	188.59'	87.02'	44.30'	26°26'13"
C-06	109.36'	40.79'	20.64'	21°22'17"
C-07	100.00'	37.69'	19.07'	21°35'38"
C-08	1.00'	2.76'	5.25'	158°25'03"
C-09	1.00'	2.76'	5.25'	158°25'03"
C-10	100.00'	37.69'	19.07'	21°35'38"
C-11	94.52'	49.16'	25.15'	29°48'01"
C-12	91.55'	49.04'	25.13'	30°41'24"

MARTIN LUTHER KING BLVD.
0+00
CL - CL INTERSECTION

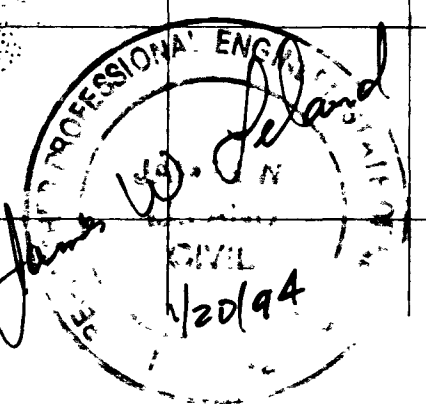


CURVE DATA - BACK OF CURB RADIUS

CURVE	BC RADIUS	LENGTH	TANGENT	DELTA
C-01	455.00'	32.45'	16.23'	04°05'09"
C-02	545.00'	85.02'	42.60'	08°56'16"



MATCH LINE - STA 11+00
SEE SHEET 21



APPD
REVISIONS
DATE NO
18 38 1
PREPARED FOR:
UNION PACIFIC REALTY CO.
DATE DEC. 1993
DESIGN ANM
LAND PLANNERS DRAWN ANM
LAND SURVEYORS LAS VEGAS, NEVADA CHECK
CIVIL ENGINEERS 68102 SCALE H 1"=40' V 1"=40'
B T
STREET DESIGN
BONNEVILLE AVENUE
SECTION 33&4, TOWNSHIP 20 SOUTH, RANGE 81 EAST, M.D.B.M., NEVADA
CITY OF LAS VEGAS
PARKWAY CENTER
SHEET NO 20
1074-4229

2045 10-24-24 1074-4229

