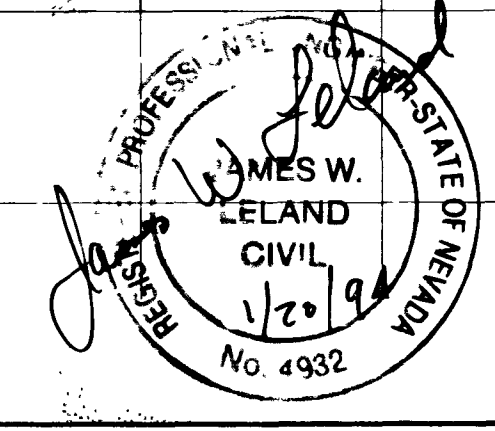
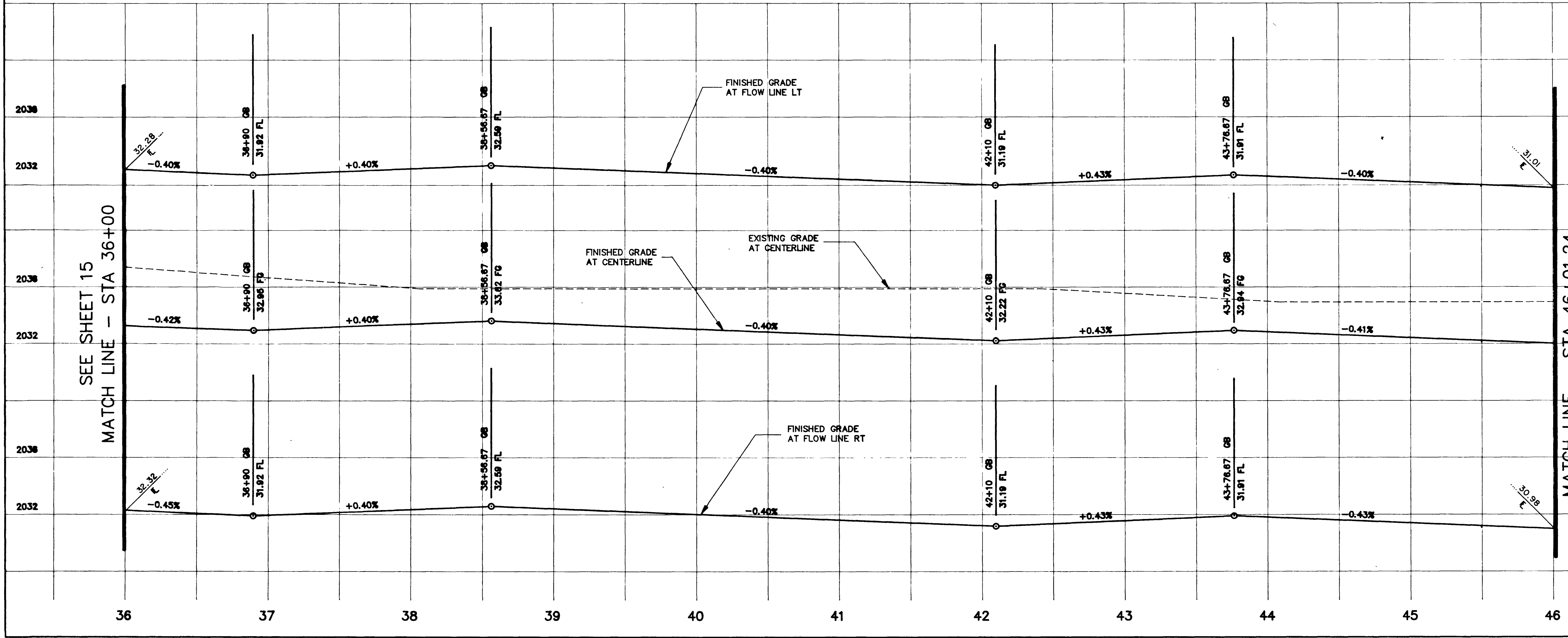


MEDIAN - BACK OF CURB RADIUS

NO.	RADIUS	LENGTH	TANGENT	DELTA
C-01	111.39'	54.20'	27.65'	27°52'37"
C-02	100.00'	37.77'	19.11'	21°38'18"
C-03	1.00'	2.76'	5.24'	158°22'59"
C-04	1.00'	2.76'	5.24'	158°22'59"
C-05	100.00'	33.80'	17.06'	19°21'57"
C-06	109.36'	53.47'	27.28'	28°00'37"
C-07	97.40'	44.70'	22.75'	26°17'43"
C-08	92.49'	47.49'	24.28'	29°25'12"
C-09	101.58'	50.55'	25.81'	28°30'42"
C-10	100.00'	37.69'	19.07'	21°35'38"
C-11	1.00'	2.76'	5.25'	158°25'03"
C-12	1.00'	2.76'	5.25'	158°25'03"



DATE: 10/24/20
 PREPARED FOR: UNION PACIFIC REALTY CO.
 PROJECT: STREET DESIGN GRAND CENTRAL PARKWAY
 SECTION: 33&34, TOWNSHIP 20 SOUTH, RANGE 81 EAST, M.D.B.#4, NEVADA
 CITY OF LAS VEGAS PARKWAY CENTER

DATE: DEC. 1988
 DESIGN: AMI
 DRAWN: AMI
 CHECK: LAS VEGAS, NEVADA
 SCALE: H 1"=40' V 1"=4'

BAUGHMAN & TURNER, INC.
 CIVIL ENGINEERS
 LAND SURVEYORS
 1210 HINSON STREET
 LAS VEGAS, NEVADA
 (702) 870-8771

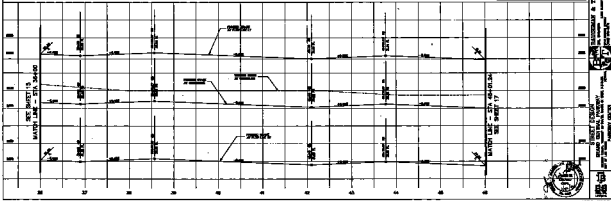
SEE SHEET 15
MATCH LINE - STA 36+00

MATCH LINE - STA 46+01.24
SEE SHEET 17

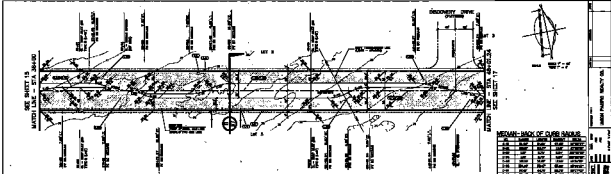
SEE SHEET 15
MATCH LINE - STA 36+00

MATCH LINE - STA 46+01.24
SEE SHEET 17

10-24-20 1071-4229



GRAND CENTRAL PARKWAY



BEFORE BACK OF CURB SINKS

STATION	DEPTH	DATE	BY
24+00	1.00	10/15/50	J.M.
24+05	1.00	10/15/50	J.M.
24+10	1.00	10/15/50	J.M.
24+15	1.00	10/15/50	J.M.
24+20	1.00	10/15/50	J.M.
24+25	1.00	10/15/50	J.M.
24+30	1.00	10/15/50	J.M.
24+35	1.00	10/15/50	J.M.
24+40	1.00	10/15/50	J.M.
24+45	1.00	10/15/50	J.M.
24+50	1.00	10/15/50	J.M.
24+55	1.00	10/15/50	J.M.
24+60	1.00	10/15/50	J.M.
24+65	1.00	10/15/50	J.M.
24+70	1.00	10/15/50	J.M.
24+75	1.00	10/15/50	J.M.
24+80	1.00	10/15/50	J.M.
24+85	1.00	10/15/50	J.M.
24+90	1.00	10/15/50	J.M.
24+95	1.00	10/15/50	J.M.
25+00	1.00	10/15/50	J.M.
25+05	1.00	10/15/50	J.M.
25+10	1.00	10/15/50	J.M.
25+15	1.00	10/15/50	J.M.
25+20	1.00	10/15/50	J.M.
25+25	1.00	10/15/50	J.M.
25+30	1.00	10/15/50	J.M.
25+35	1.00	10/15/50	J.M.
25+40	1.00	10/15/50	J.M.
25+45	1.00	10/15/50	J.M.
25+50	1.00	10/15/50	J.M.
25+55	1.00	10/15/50	J.M.
25+60	1.00	10/15/50	J.M.
25+65	1.00	10/15/50	J.M.
25+70	1.00	10/15/50	J.M.
25+75	1.00	10/15/50	J.M.
25+80	1.00	10/15/50	J.M.
25+85	1.00	10/15/50	J.M.
25+90	1.00	10/15/50	J.M.
25+95	1.00	10/15/50	J.M.
26+00	1.00	10/15/50	J.M.
26+05	1.00	10/15/50	J.M.
26+10	1.00	10/15/50	J.M.
26+15	1.00	10/15/50	J.M.
26+20	1.00	10/15/50	J.M.
26+25	1.00	10/15/50	J.M.
26+30	1.00	10/15/50	J.M.
26+35	1.00	10/15/50	J.M.
26+40	1.00	10/15/50	J.M.
26+45	1.00	10/15/50	J.M.
26+50	1.00	10/15/50	J.M.
26+55	1.00	10/15/50	J.M.
26+60	1.00	10/15/50	J.M.
26+65	1.00	10/15/50	J.M.
26+70	1.00	10/15/50	J.M.
26+75	1.00	10/15/50	J.M.
26+80	1.00	10/15/50	J.M.
26+85	1.00	10/15/50	J.M.
26+90	1.00	10/15/50	J.M.
26+95	1.00	10/15/50	J.M.
27+00	1.00	10/15/50	J.M.
27+05	1.00	10/15/50	J.M.
27+10	1.00	10/15/50	J.M.
27+15	1.00	10/15/50	J.M.
27+20	1.00	10/15/50	J.M.
27+25	1.00	10/15/50	J.M.
27+30	1.00	10/15/50	J.M.
27+35	1.00	10/15/50	J.M.
27+40	1.00	10/15/50	J.M.
27+45	1.00	10/15/50	J.M.
27+50	1.00	10/15/50	J.M.
27+55	1.00	10/15/50	J.M.
27+60	1.00	10/15/50	J.M.
27+65	1.00	10/15/50	J.M.
27+70	1.00	10/15/50	J.M.
27+75	1.00	10/15/50	J.M.
27+80	1.00	10/15/50	J.M.
27+85	1.00	10/15/50	J.M.
27+90	1.00	10/15/50	J.M.
27+95	1.00	10/15/50	J.M.
28+00	1.00	10/15/50	J.M.

JAMES W. STARNES, INC.

 ENGINEERS AND ARCHITECTS

 200 WEST 42ND STREET, NEW YORK 36, N.Y.

 TELEPHONE: MU 2-1100

 COUNCIL OF PROFESSIONAL ENGINEERS AND ARCHITECTS

 STATE OF NEW YORK

 LICENSE NO. 10172

 EXPIRES 12/31/51

 PROJECT NO. 10172

 SHEET NO. 10172-1

 GRAND CENTRAL PARKWAY

 STATIONING 24+00 TO 28+00

 DATE: 10/15/50