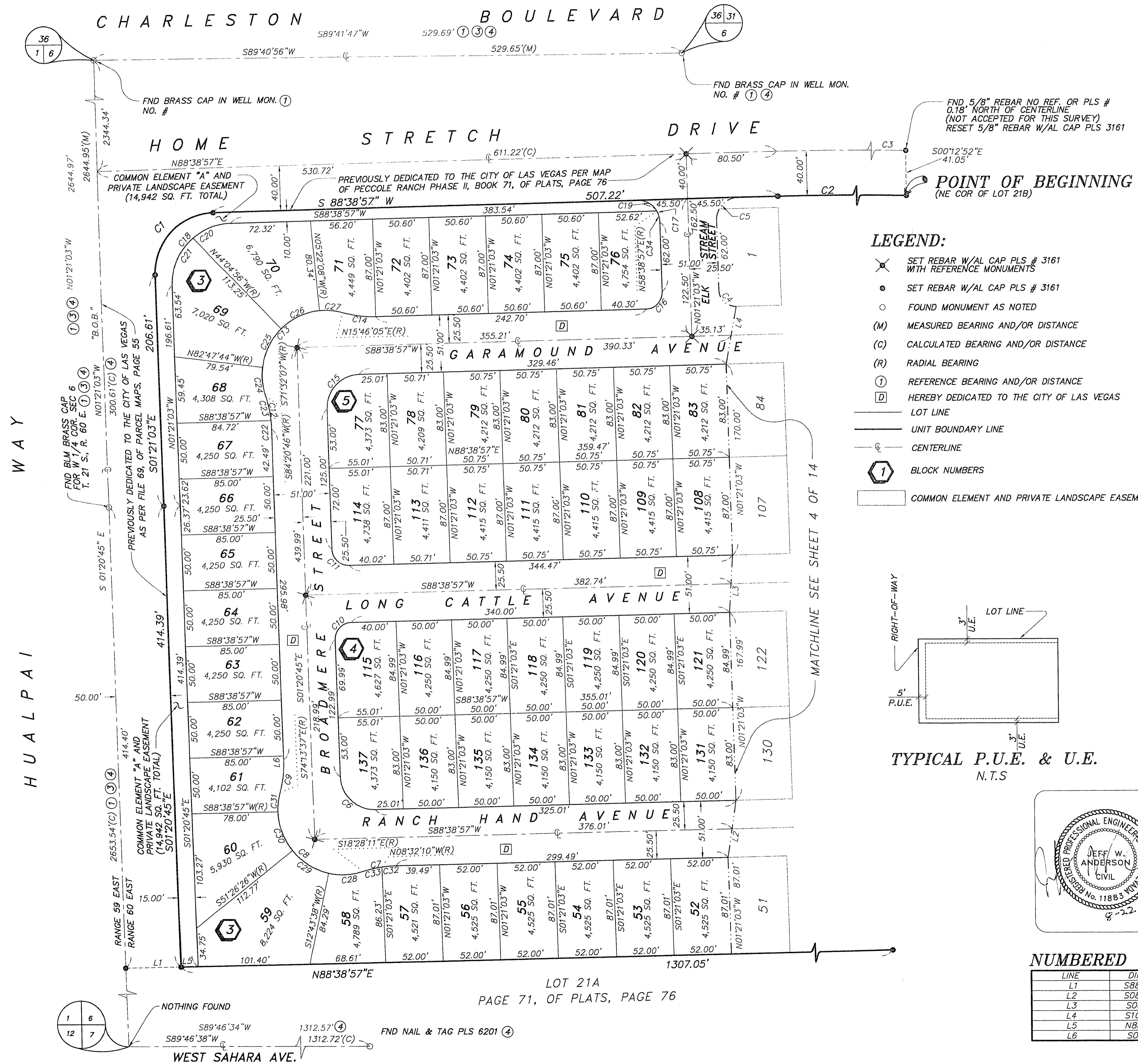


BEING ALL OF LOT 21 B, AS SHOWN IN BOOK 71, OF PLATS, PAGE 76 AND ALSO
BEING A PORTION OF THE WEST HALF (W 1/2) OF SECTION 6, TOWNSHIP 21 SOUTH, RANGE 60 EAST, M.D.M.
CITY OF LAS VEGAS, CLARK COUNTY, NEVADA.



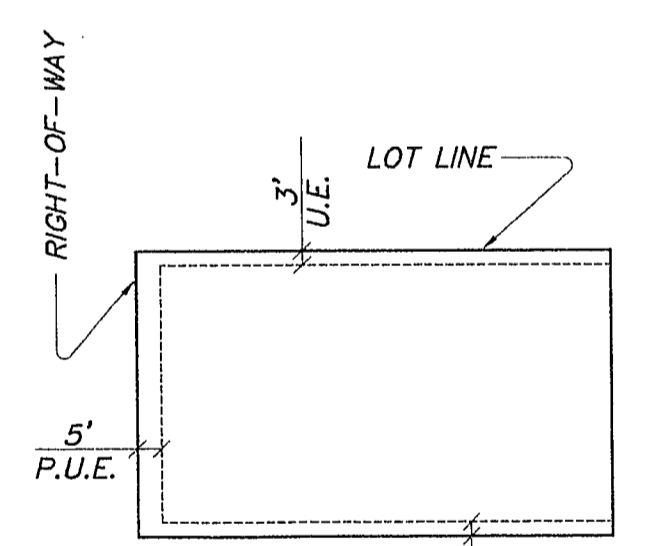
TOTAL LOTS: 137 LOTS
TOTAL ACREAGE: 19.81 ACRES

BASIS OF BEARINGS:
BEING THE WEST LINE OF THE NORTHWEST QUARTER (NW 1/4) OF SECTION 6, TOWNSHIP 21 SOUTH, RANGE 60 EAST, M.D.M., CITY OF LAS VEGAS, CLARK COUNTY, NEVADA AS SHOWN ON IN FILE 69, OF PARCEL MAPS, PAGE 55 OFFICIAL RECORDS OF CLARK COUNTY NEVADA, WHICH BEARS: NORTH 01°21'03" EAST.

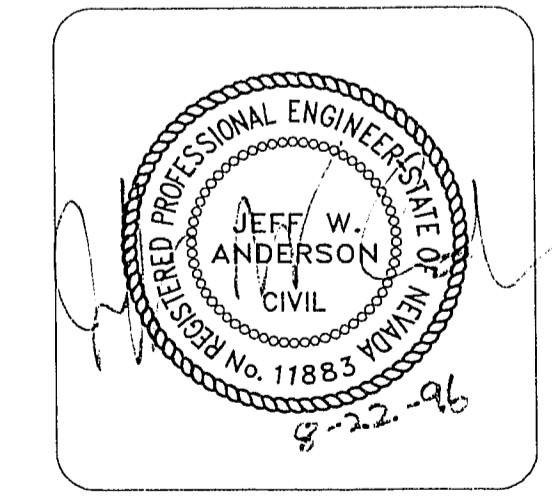
- LEGEND:**
- ⊗ SET REBAR W/AL CAP PLS # 3161 WITH REFERENCE MONUMENTS
 - SET REBAR W/AL CAP PLS # 3161
 - FOUND MONUMENT AS NOTED
 - (M) MEASURED BEARING AND/OR DISTANCE
 - (C) CALCULATED BEARING AND/OR DISTANCE
 - (R) RADIAL BEARING
 - ① REFERENCE BEARING AND/OR DISTANCE HEREBY DEDICATED TO THE CITY OF LAS VEGAS
 - ②
 - ③
 - ④
 - LOT LINE
 - UNIT BOUNDARY LINE
 - CENTERLINE
 - ① BLOCK NUMBERS
 - COMMON ELEMENT AND PRIVATE LANDSCAPE EASEMENT

- REFERENCES:**
- ① PARCEL MAP FILE 69, PAGE 55
 - ② PLATS BOOK 44, PAGE 72
 - ③ RECORD OF SURVEY FILE 36, PAGE 89
 - ④ PLATS BOOK 71, PAGE 76

- NOTES:**
1. ALL REAR LOT CORNERS SHALL BE SET WITH A NAIL AND TAG P.L.S. 3161 ON BLOCK WALL AND ALL FRONT AND SIDE LOT CORNERS ADJOINING PUBLIC RIGHT-OF-WAY SHALL BE MARKED BY THE SAWCUTTING OF THE BACK OF CURBS ON THE PROLONGATION OF THE PROPERTY LINES.
 2. ALL COMMON ELEMENTS AND PRIVATE LANDSCAPE EASEMENTS SHALL BE MAINTAINED BY THE HOMEOWNERS ASSOCIATION.
 3. DIRECT VEHICULAR ACCESS TO HOME STRETCH DRIVE AND HUALPAI WAY THROUGH COMMON ELEMENTS FROM ADJUTING LOTS IS PROHIBITED.



TYPICAL P.U.E. & U.E.
N.T.S.



NUMBERED COURSES:

LINE	DIRECTION	DISTANCE
L1	S88°38'57"W	50.00'
L2	S08°40'23"W	51.79'
L3	S03°40'11"W	51.20'
L4	S10°33'07"W	52.12'
L5	N88°38'57"E	15.00'
L6	S01°20'45"E	3.49'

CURVE TABLE:

CURVE	RADIUS	LENGTH	TANGENT	DELTA
C1	54.00'	84.82'	54.00'	90°00'00"
C2	3085.00'	765.13'	384.54'	14°12'37"
C3	3125.00'	765.76'	384.81'	14°02'24"
C4	15.00'	23.56'	15.00'	90°00'00"
C5	20.00'	31.42'	20.00'	90°00'00"
C6	30.00'	47.13'	30.00'	90°00'18"
C7	100.00'	29.88'	15.05'	17°07'08"
C8	58.00'	125.77'	109.84'	124°14'54"
C9	100.00'	29.88'	15.05'	17°07'08"
C10	15.00'	23.56'	15.00'	89°59'42"
C11	15.00'	23.56'	15.00'	90°00'18"
C12	100.00'	29.88'	15.05'	17°07'08"
C13	58.00'	125.76'	109.62'	124°13'58"
C14	100.00'	29.88'	15.05'	17°07'08"
C15	30.00'	47.12'	30.00'	89°59'42"
C16	15.00'	23.56'	15.00'	90°00'00"
C17	20.00'	31.42'	20.00'	90°00'00"
C18	54.00'	84.82'	54.00'	90°00'00"
C19	20.00'	20.94'	11.55'	60°00'00"
C20	54.00'	37.03'	19.28'	39°17'27"
C21	54.00'	47.79'	25.59'	50°42'33"
C22	100.00'	7.52'	3.76'	04°18'29"
C23	100.00'	22.36'	11.23'	12°48'38"
C24	58.00'	25.98'	13.21'	25°40'09"
C25	58.00'	39.19'	20.38'	38°42'48"
C26	58.00'	39.19'	20.38'	38°42'48"
C27	58.00'	21.40'	10.82'	21°08'13"
C28	58.00'	31.58'	16.19'	31°11'49"
C29	58.00'	39.19'	20.38'	38°42'48"
C30	58.00'	37.67'	19.52'	37°12'31"
C31	58.00'	17.33'	8.73'	17°07'26"
C32	100.00'	12.54'	6.28'	07°11'08"
C33	100.00'	17.34'	8.69'	09°56'00"
C34	20.00'	10.47'	5.36'	30°00'00"

PREPARED BY: **Hunsaker Associates**
Planning • Engineering • Surveying
LAS VEGAS, NEVADA 89101
(702) 497-1833

PROJECT NO. **1506-12**

SHEET **3 OF 14**

SCALE(H): 1" = 50'
SCALE(V): 1" = --
DES. BY: JWA
DWN. BY: PAS
DATE: 04/96

NO. DESCRIPTION REVISIONS BY DATE APPR.

REVISIONS

DATE

APPR.

CAD FILE NAME: 1506-12C1.DWG

DATE: 20/AUG/96

PECCOLE RANCH
PHASE II - LOT 21B
LAS VEGAS, NEVADA

HORIZONTAL CONTROL

P:\1506-12\1506-12C1.DWG: Tue Aug 20 10:08:16 1996