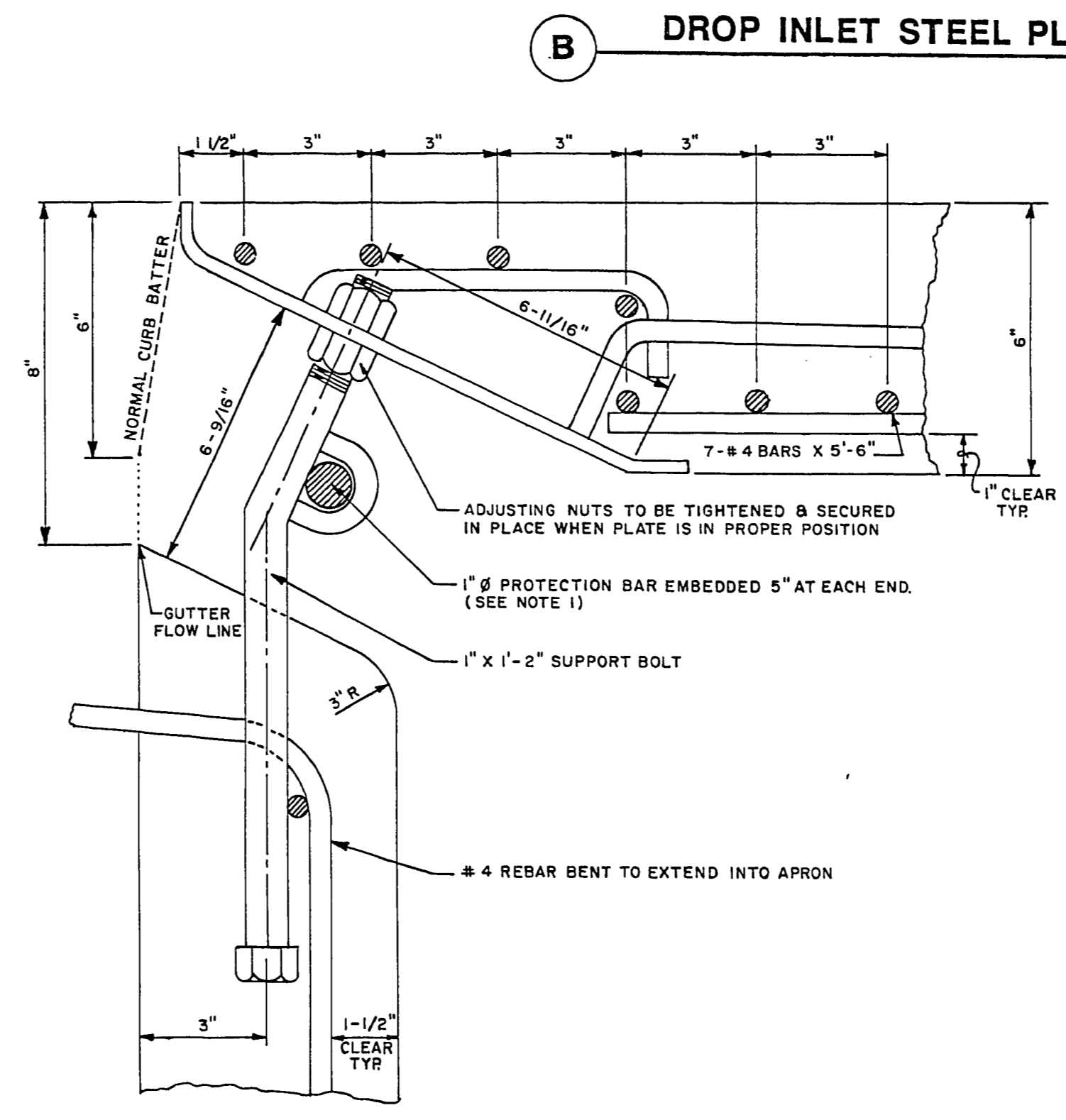


TOP VIEW

FRONT VIEW

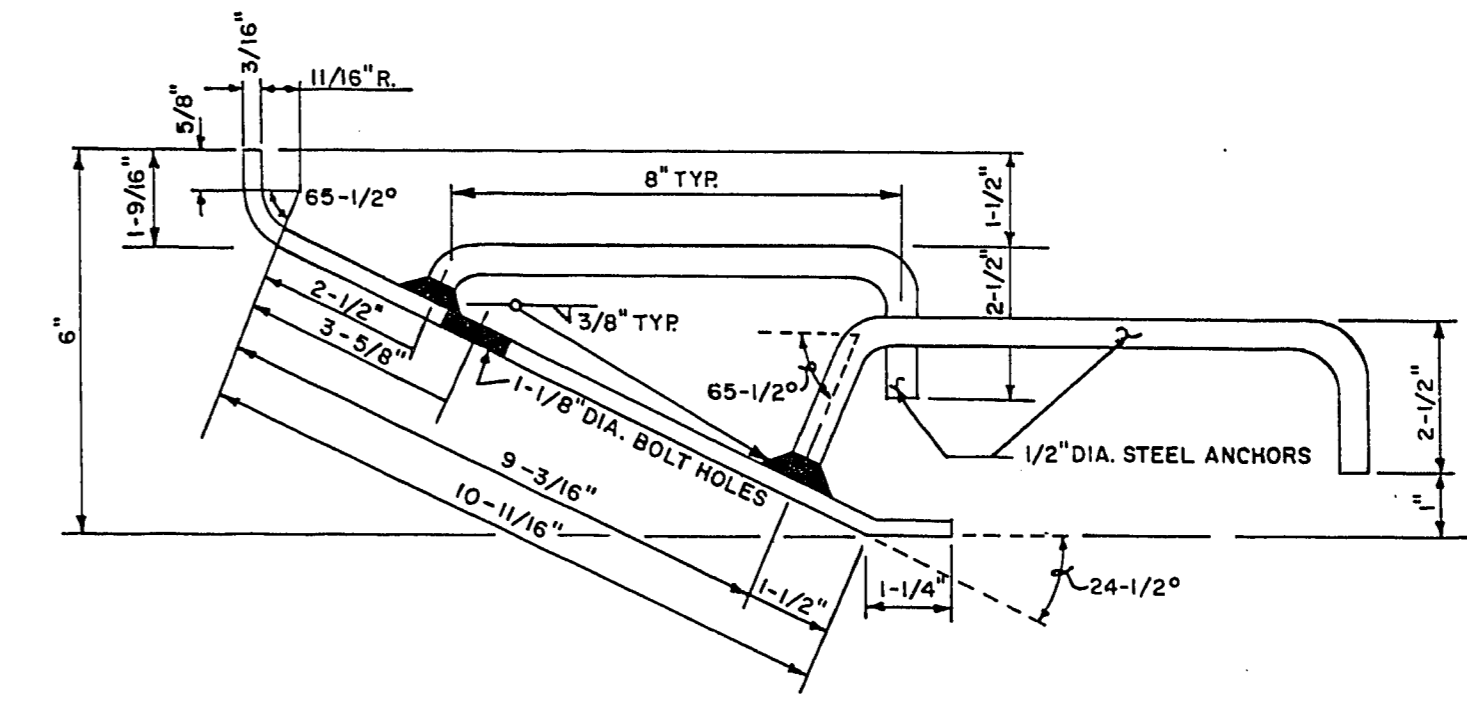
A DROP INLET TYPE 'A' DETAIL
NO SCALE

- NOTES:
1. CONCRETE SHALL BE CLASS "D" OR "DA"
 2. OUTLET PIPE SHALL BE TRIMMED FLUSH WITH INSIDE FACE OF INLET
 3. BOTTOM SECTION OF INLET MAY BE PRECAST. CONSTRUCTION JOINT MUST BE PLACED BELOW EMBEDMENT DEPTH OF STEEL PLATE ASSEMBLY
 4. OUTLET PIPE SIZE IS SHOWN ON PLANS
 5. LOCATIONS SPECIFIED ON PLANS ARE TO THE CENTER POINT OF DROP INLET. FIELD ADJUSTMENT MAY BE REQUIRED IN SOME CASES
 6. CONSTRUCTION JOINT FOR PRECAST SECTION

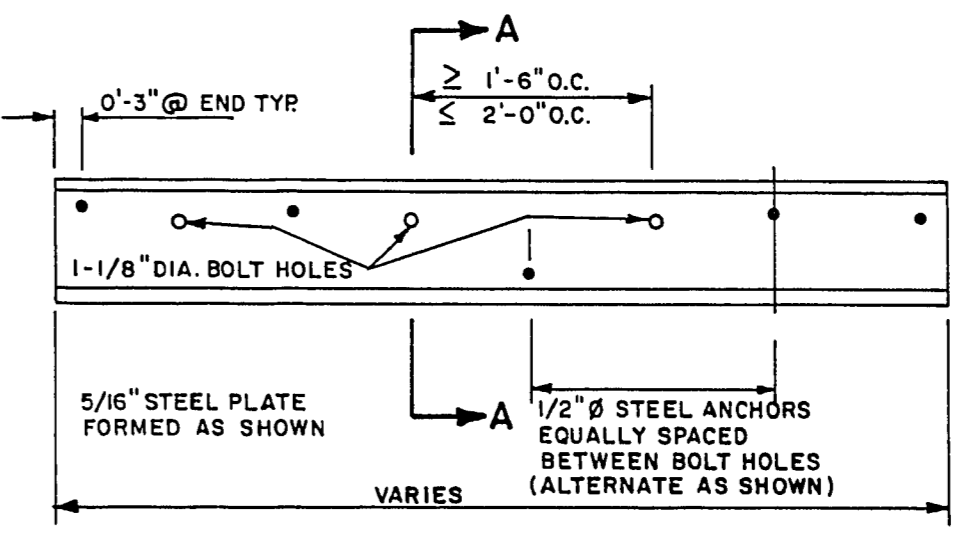


B DROP INLET STEEL PLATE ASSEMBLY DETAILS

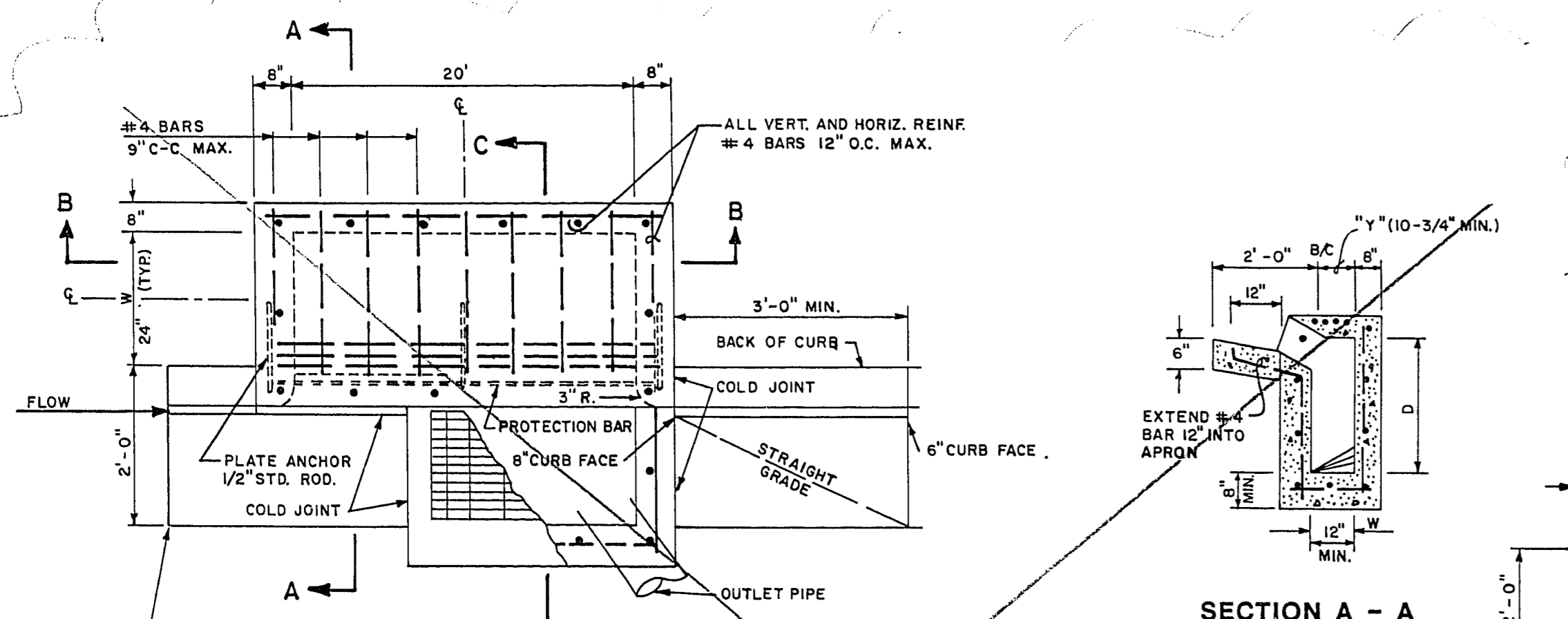
- NOTES:
1. PROTECTION BAR SHALL BE REQUIRED ON ALL INLETS AND SHALL BE PLACED PARALLEL TO THE STEEL FACE PLATE
 2. SUPPORT BOLTS SHALL BE EQUALLY SPACED AT NOT MORE THAN 2'-0" O.C. AND NOT LESS THAN 1'-6" O.C.
 3. ALL EXPOSED METAL PARTS SHALL BE GALVANIZED. GALVANIZED PARTS DAMAGED BY FABRICATION OR INSTALLATION SHALL RECEIVE TWO COATS OF ALUMINUM PAINT (GALVONOX OR EQUAL)
 4. #4 BARS X 5'-6" SHALL BE IN ADDITION TO REINFORCING STEEL PER APPLICABLE DROP INLET STANDARD PLAN



STEEL PLATE ANCHORAGE
SECTION A - A



BOLT HOLE AND BAR SPACING DETAIL



TOP VIEW

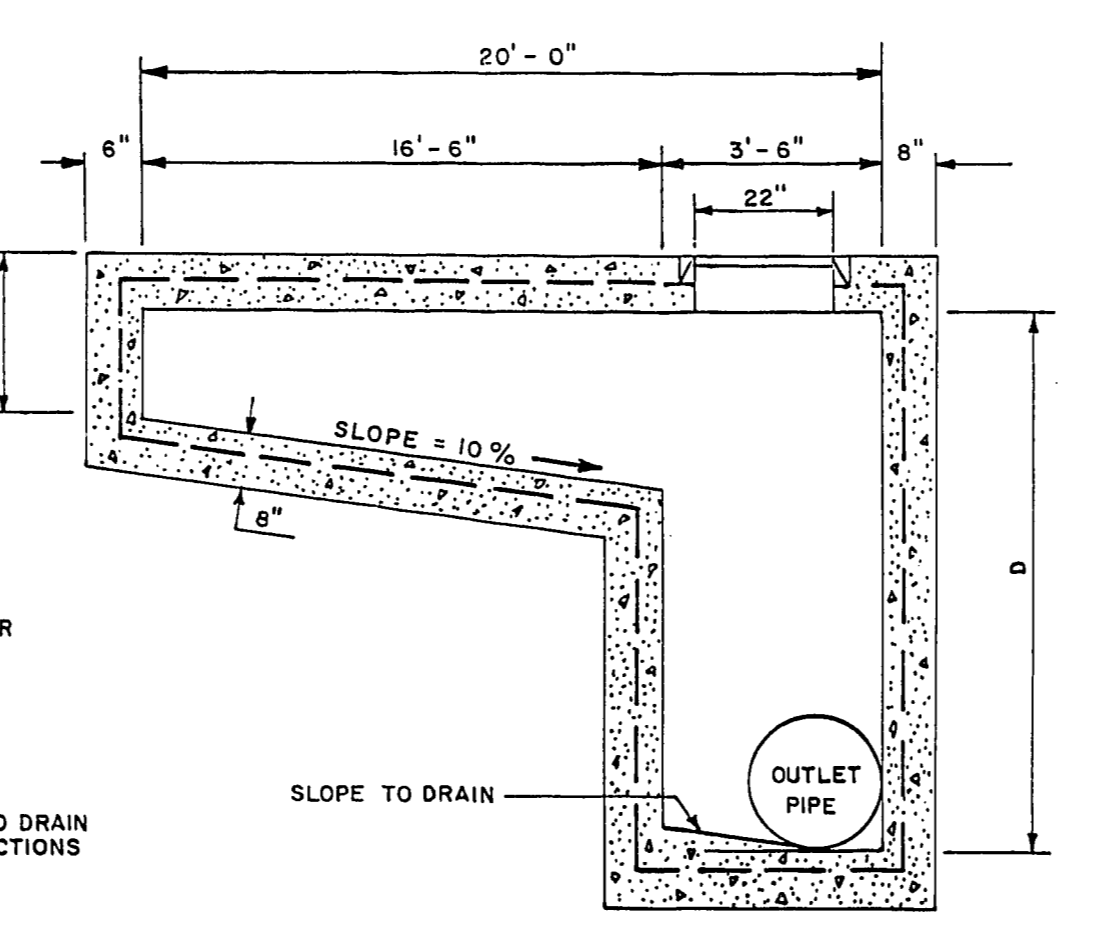
FRONT VIEW

C DROP INLET TYPE 'D' DETAIL
(OPPOSITE HAND FOR SOUTH SIDE OF OWENS)

- NOTES:
1. OUTLET PIPE SIZE TO BE SHOWN ON PLANS
 2. CONCRETE SHALL BE CLASS "D" OR "DA"
 3. FOR GRATE DETAIL SEE DETAIL D
 4. DEPTH "D" SHOWN ON PLANS
 5. W = 24" UNLESS REDUCED BY UTILITY CONFLICTS
 6. LOCATION SHOWN ON PLANS IS TO THE CENTER POINT OF DROP INLET. FIELD ADJUSTMENT MAY BE REQUIRED IN SOME CASES

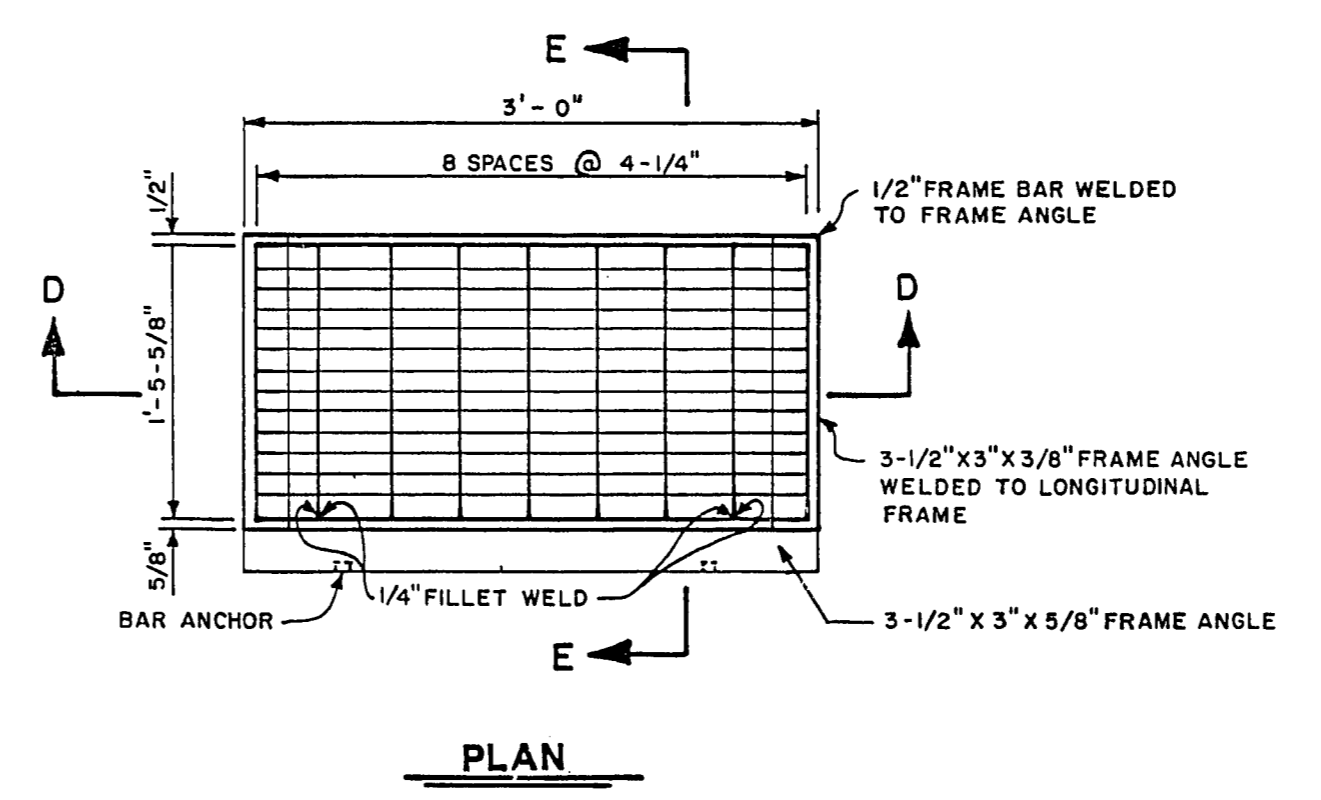
SECTION A - A

SECTION C - C



SECTION B - B

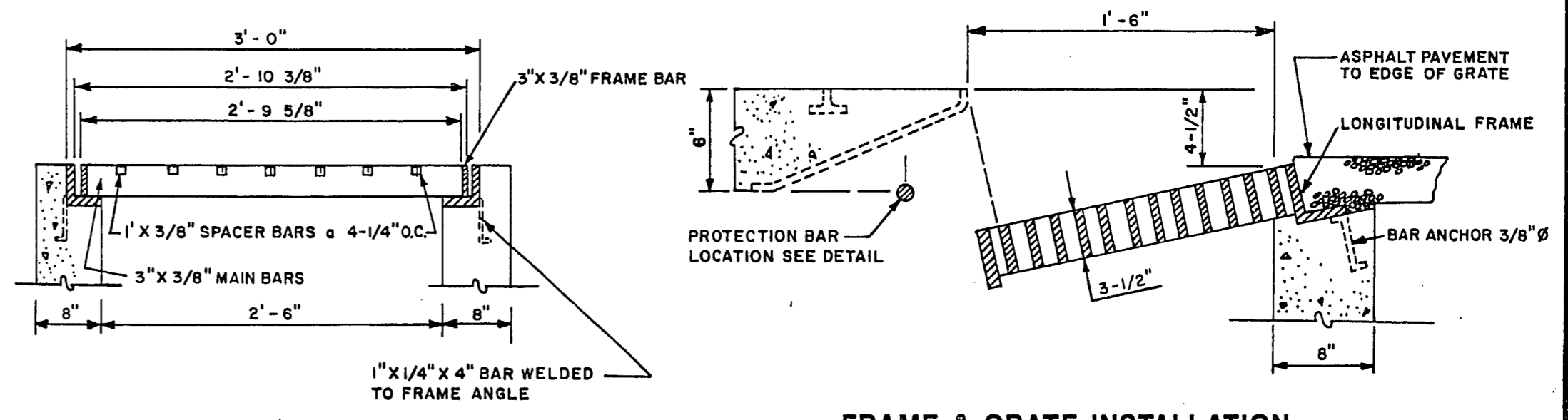
DROP INLET TYPE 'D'
REFERENCE C.L.V. DWG. #415



PLAN

SECTION E - E

APPROXIMATE WEIGHT	
FRAME	80 LBS.
GRATE	157 LBS.
TOTAL	237 LBS.



SECTION D - D

FRAME & GRATE INSTALLATION

- NOTE:
- ALL EXPOSED METAL PARTS SHALL BE GALVANIZED AND ALL GALVANIZING DAMAGED BY FABRICATION OR INSTALLATION SHALL RECEIVE TWO COATS OF ALUMINUM PAINT (GALVONOX OR EQUAL)

D DROP INLET FRAME AND GRATE DETAIL

Department of Public Works Engineering Design Division

OWENS AVENUE
(PECOS ROAD TO NELLIS BLVD.)

STORM DRAIN DETAILS
DROP INLETS

Scale (V) — Scale (H) — W.A. WILKINS
Date DEC. 1988
Design by DAVID A. DWYER
Approved by CITY ENGINEER

Drawn by NORMA GOMEZ
Date

Revisions

DEFINITE D-1 TYPE 'D' DETAIL 1/12/87

Drawing no. SD2
107 V858
10-6-75 71 of 73