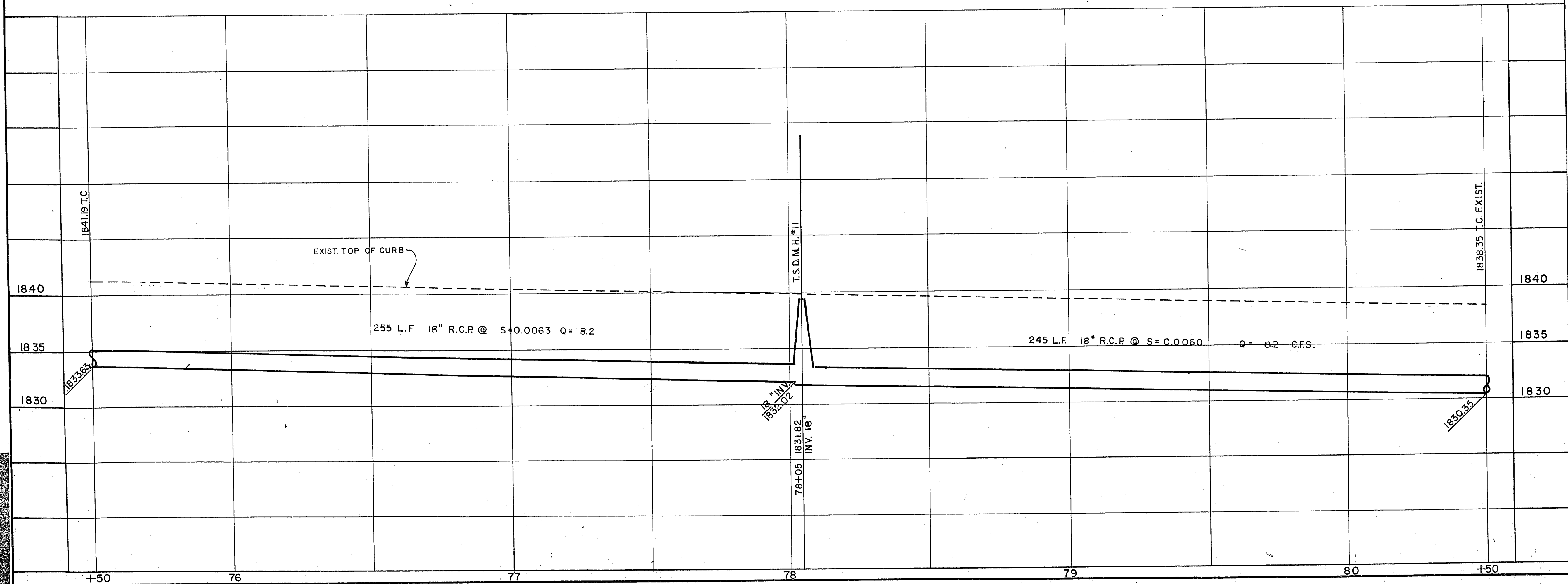
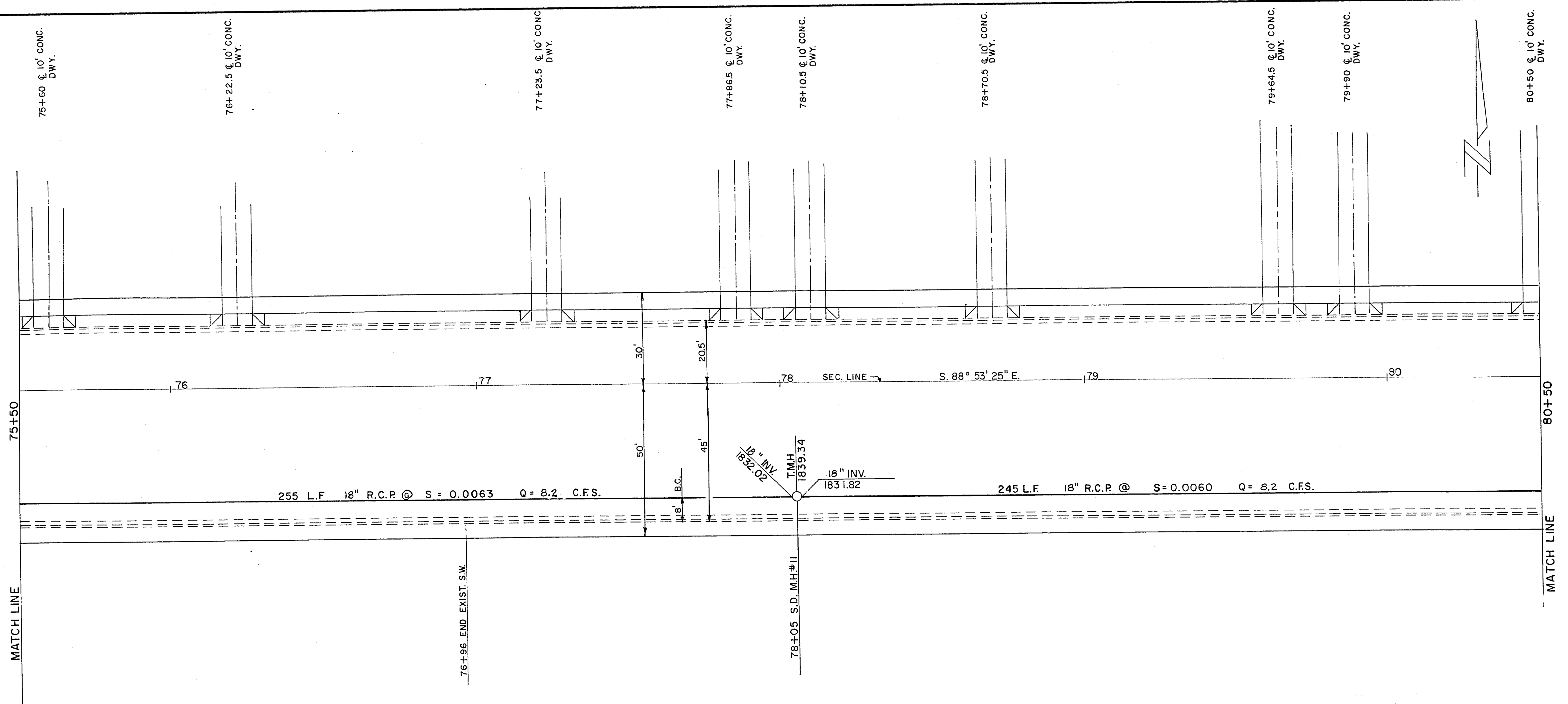


APPROXIMATE QUANTITIES — THIS SHEET

ITEM	DESCRIPTION	RSH	CLV	NLV	UNIT
121.218 C	18" R.C.P.	500			L.F.
512.305	STORM DRAIN M.H.	8			V.F.

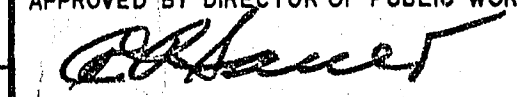


CONTRACT
DRAWING
FEB 15 1971

REVISION NO.	DESCRIPTION	BY	DATE	APPROVAL
REVISIONS				

CITY OF LAS VEGAS NEVADA
DEPARTMENT OF PUBLIC WORKS
SERVICES DIVISION

OWENS AVENUE WIDENING PROJECT
STORM DRAIN ONLY

W.D. NO. 7670	F.B.K. NO.	DATE	DRAWING NO.
SC. (H) 1" = 20'	SC. (V) 1" = 5'		
DES. W. JAUBERT			
DR. M. PATTERSON		JAN., 1970	FILE NO.
APPROVED BY DIRECTOR OF PUBLIC WORKS			107-V708
			SHEET 20 OF 36