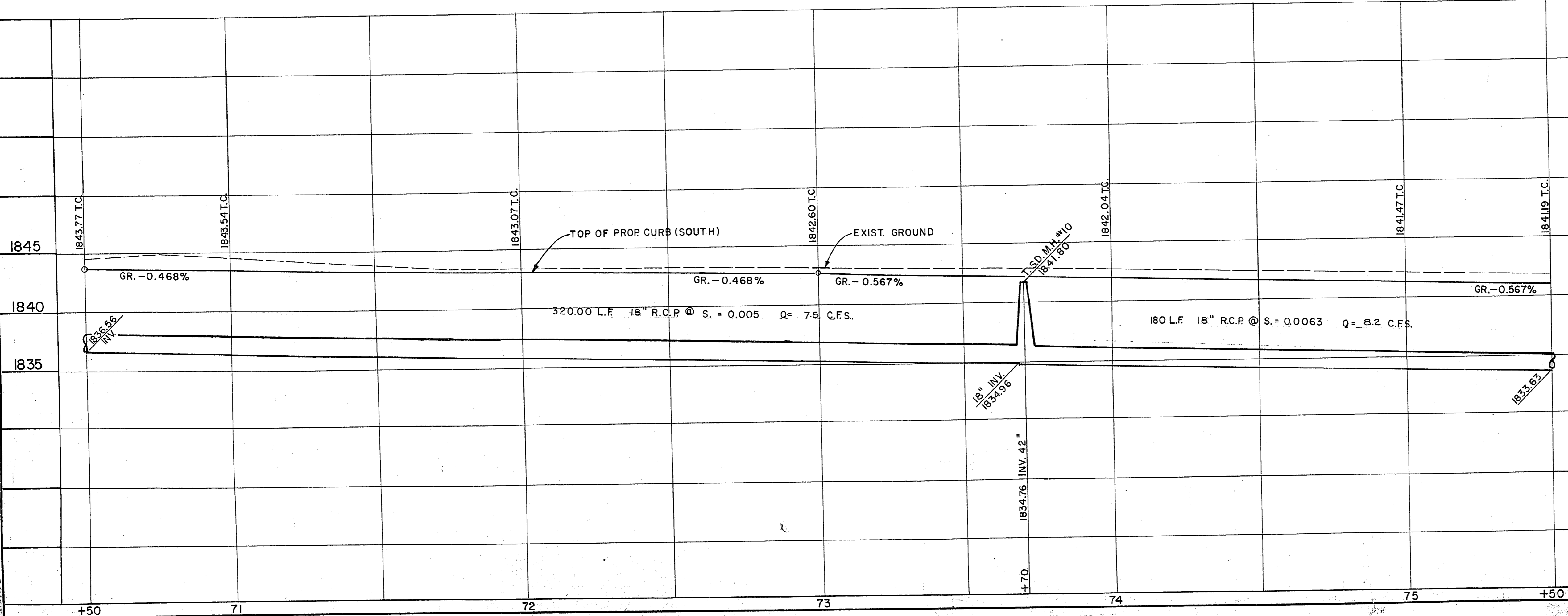
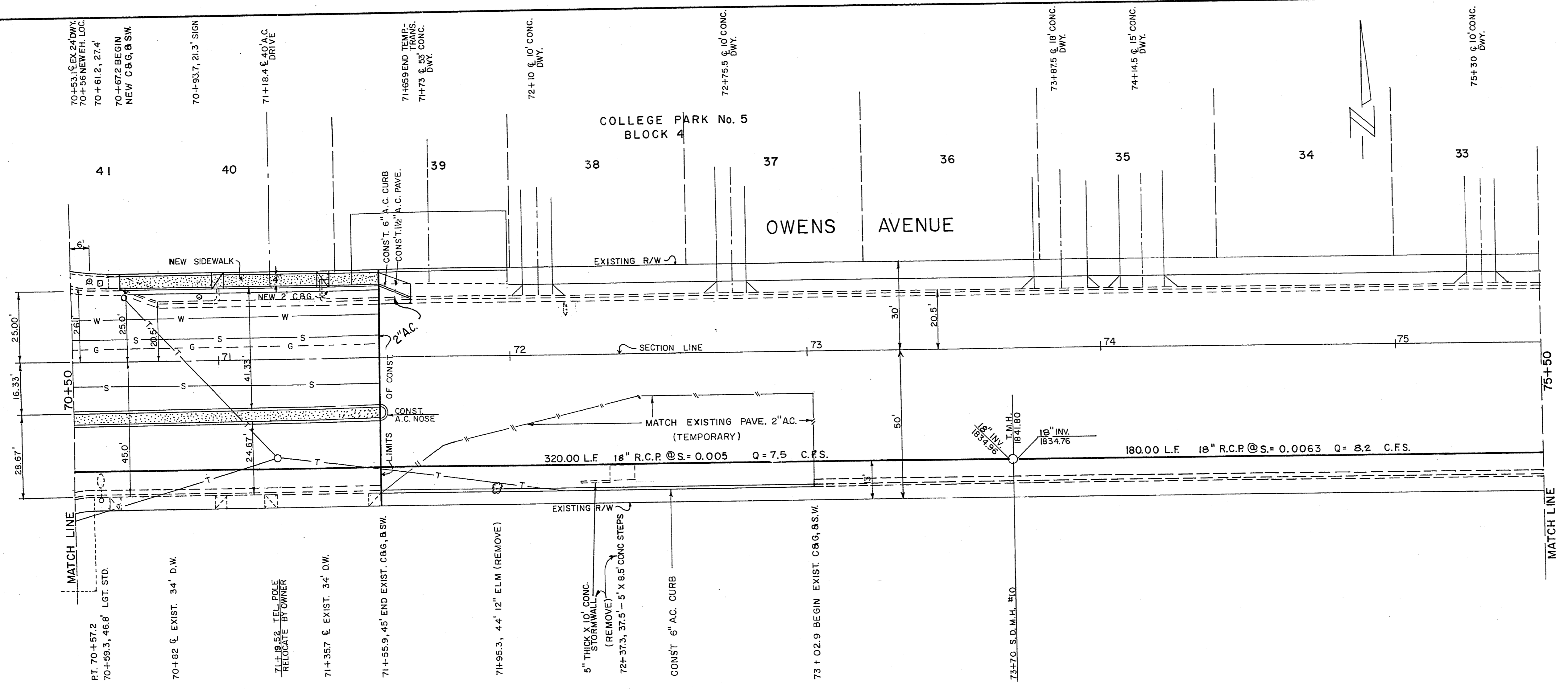


APPROXIMATE QUANTITIES - THIS SHEET				R.S.H.
ITEM	DESCRIPTION	UNIT	QUANTITY	
201.100	EXCAVATION (UNCLASS.)	C.Y.	566	
302.100	TYPE I GRAVEL BASE	C.Y.	260	
302.200	TYPE II GRAVEL BASE	C.Y.	96	
334.006	3" ASPHALTIC CONCRETE	TONS	125	
333.500	1/2" OPENGRADED SURFACE COURSE	S.Y.	714	
340.031	"A" TYPE ISLAND CURB	L.F.	212	
340.014	CONC. CURB & GUTTER - "L" TYPE 24"	L.F.	49	
340.114	CONC. SIDEWALK	S.F.	196	
340.226	CONC. DRIVEWAY (COMM.)	S.F.	280	
340.144	CONC. PAVING (MEDIAN)	S.F.	424	
200.110	REMOVE CONC. CURB & GUTTER	LF	100	
200.110	REMOVE CONC. S/W & D/W	S.F.	400	
201.100	REMOVE A.C. PAVEMENT	S.Y.	730	
340.912	6" A.C. CURB	L.F.	158	
334.004	2" A.C. PAVE (TEMP)	TONS	49	
334.003	1 1/2" A.C. PAVE (S/W TRANS)	TONS	1	
	F06 SEAL	S.Y.	424	
121.218 C	18" RCP	L.F.	500	
512.305	STORM DRAIN MANHOLE	V.F.	7	
334.111	PRIME COAT	S.Y.	718	



CONTRACT
DRAWING
FEB 15 1971

REVISION NO.	DESCRIPTION	BY	DATE	APPROVAL
REVISIONS				

CITY OF LAS VEGAS NEVADA
DEPARTMENT OF PUBLIC WORKS
SERVICES DIVISION

OWENS AVENUE WIDENING PROJECT
STORM DRAIN ONLY

W.O. NO. 7670	F.B.K. NO. 68-1X	DATE	DRAWING NO.
SC. (H) 1" = 20'	SC. (V) 1" = 5'		
DES. W. JAUBERT	DR. M. PATTERSON	JAN., 1970	FILE NO.
APPROVED BY DIRECTOR OF PUBLIC WORKS			107-V708
			SHEET 19 OF 36