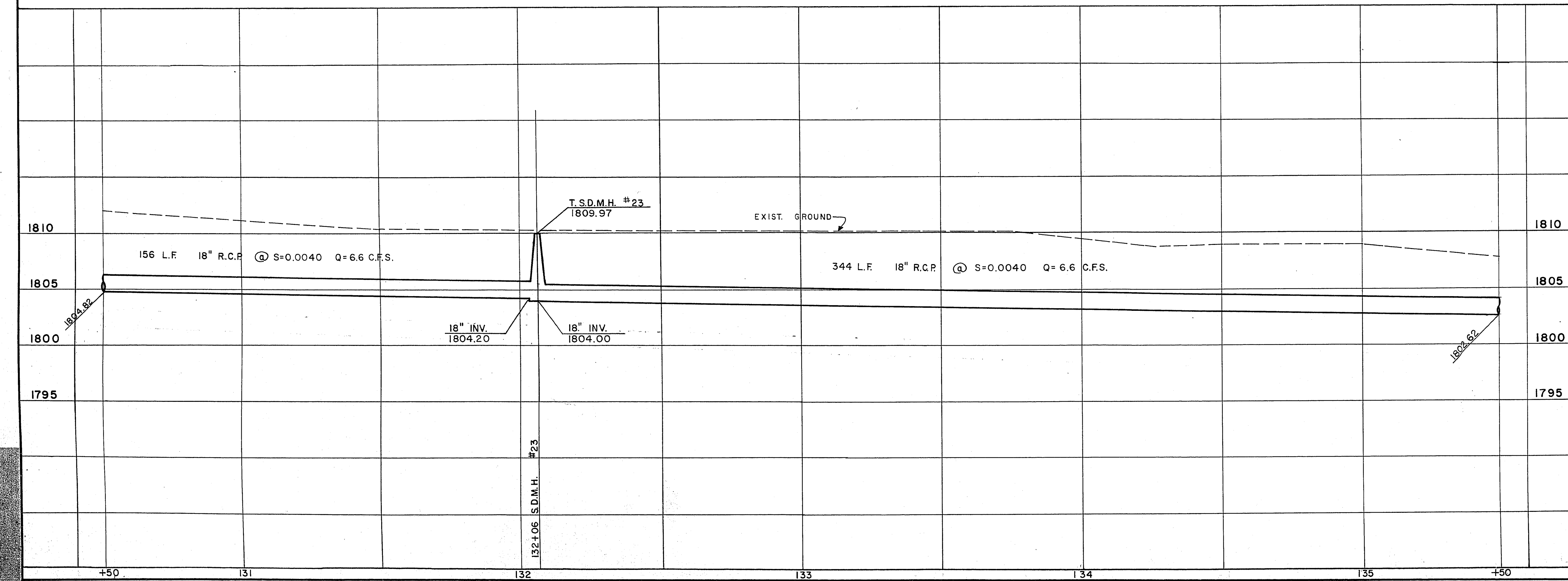
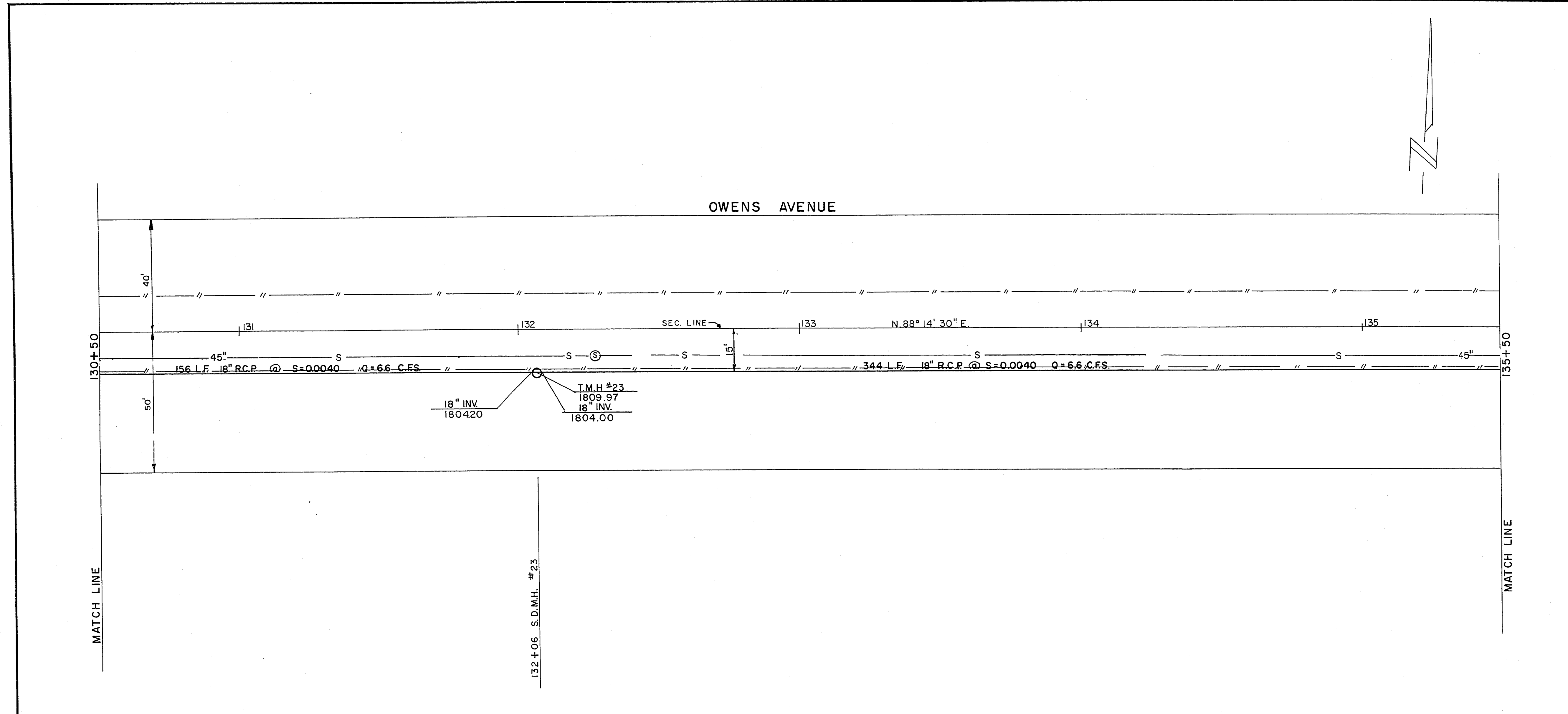


APPROXIMATE QUANTITIES — THIS SHEET

ITEM	DESCRIPTION	RSH	CLV	NLV	UNIT
121.218 C	18" R.C.P.	500			L.F.
512.305	STORM DRAIN M.H.(STANDARD)	6			V.F.



CONTRACT
DRAWING
FEB 15 1971

RELOCATION

REVISION NO. DESCRIPTION BY DATE APPROVAL

W.C. 3-3-71

CITY OF LAS VEGAS NEVADA
DEPARTMENT OF PUBLIC WORKS
SERVICES DIVISION

OWENS AVENUE WIDENING PROJECT
STORM DRAIN ONLY

W.O. NO. 7670 F.B.K. NO. DATE DRAWING NO.
SC. (H) 1" = 20' SC. (V) 1" = 5' 107-V708

DES. W. JAUBERT
DR. M. PATTERSON JAN., 1970 FILE NO.

APPROVED BY DIRECTOR OF PUBLIC WORKS

SHEET 31 OF 36