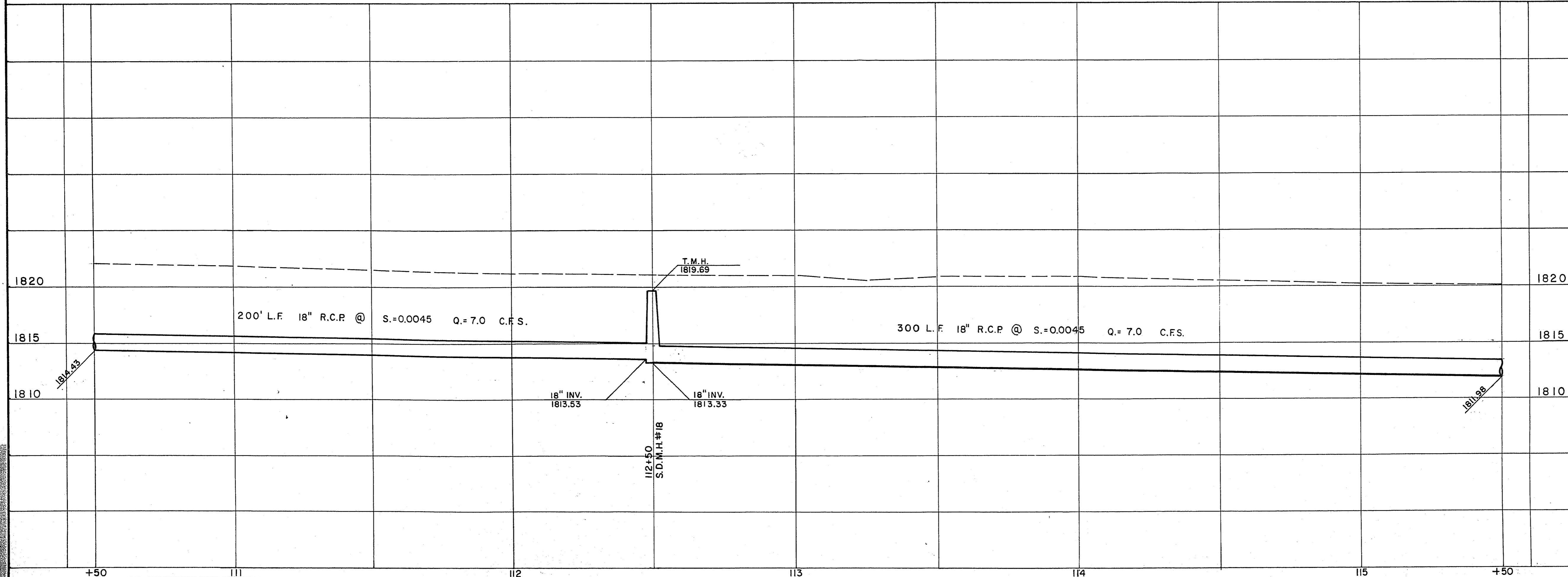
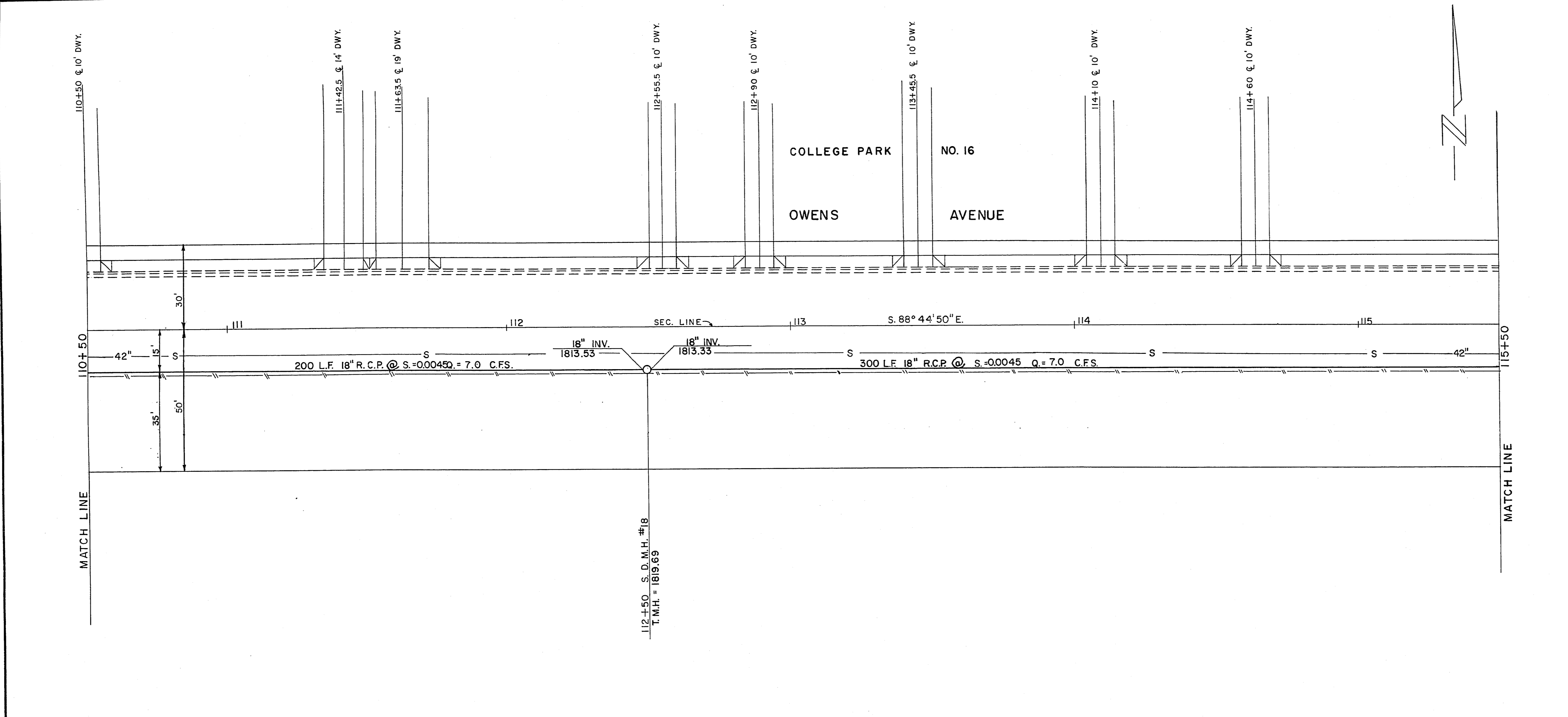


44-41

APPROXIMATE QUANTITIES — THIS SHEET					
ITEM	DESCRIPTION	RSH	CLV	NLV	UNIT
121.218 C	18" R.C.P.	500			L.F.
512.305	STORM DRAIN M.H.	6			V.F.



CONTACT DRAWING
FEB 15 1971

REVISION NO.	DESCRIPTION	BY	DATE	APPROVAL
1	RELOCATION & NEW GRADE	W.J.	3-3-71	<i>[Signature]</i>

CITY OF LAS VEGAS NEVADA
DEPARTMENT OF PUBLIC WORKS
SERVICES DIVISION

OWENS AVENUE WIDENING PROJECT
STORM DRAIN ONLY

W.O. NO. 7670	E.B.K. NO.	DATE	DRAWING NO.
SC. (H) 1" = 20'	SC. (V) 1" = 5'	JAN., 1970	107-V708
DES. W. JAUBERT		FILE NO.	
DR. M. PATTERSON			
APPROVED BY DIRECTOR OF PUBLIC WORKS			

[Signature]

SHEET 27 OF 36