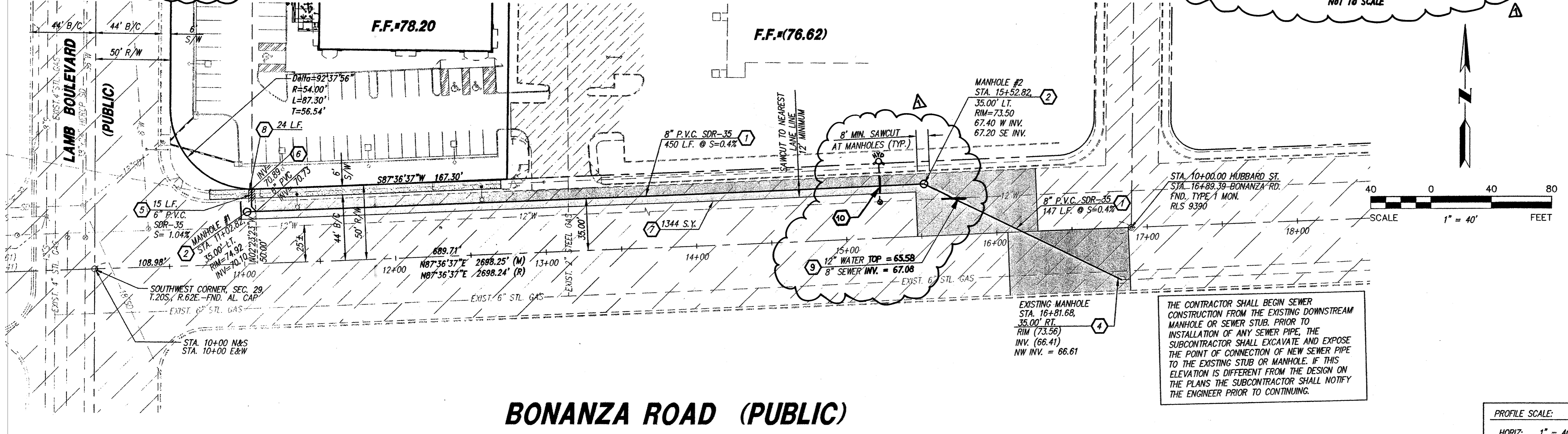
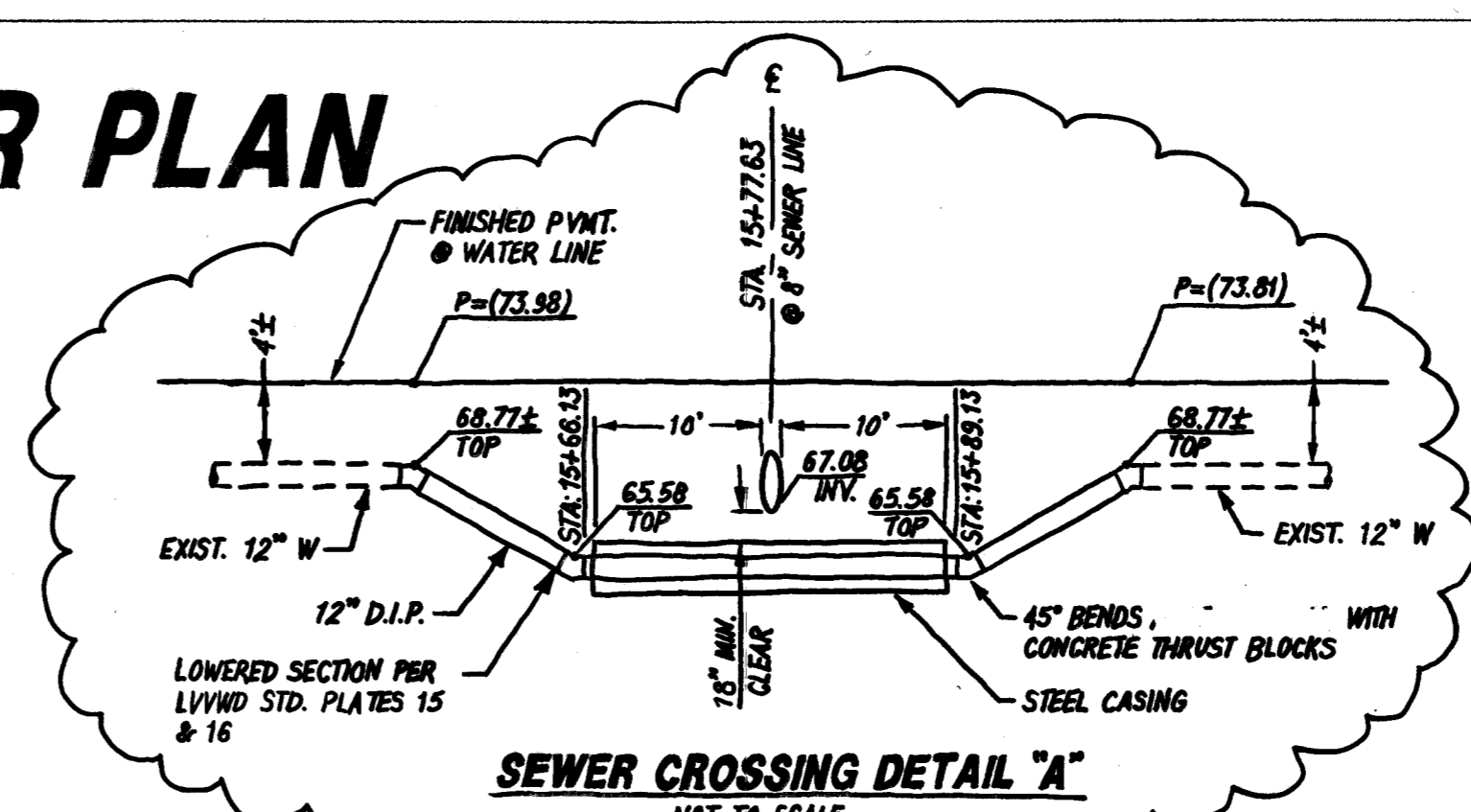
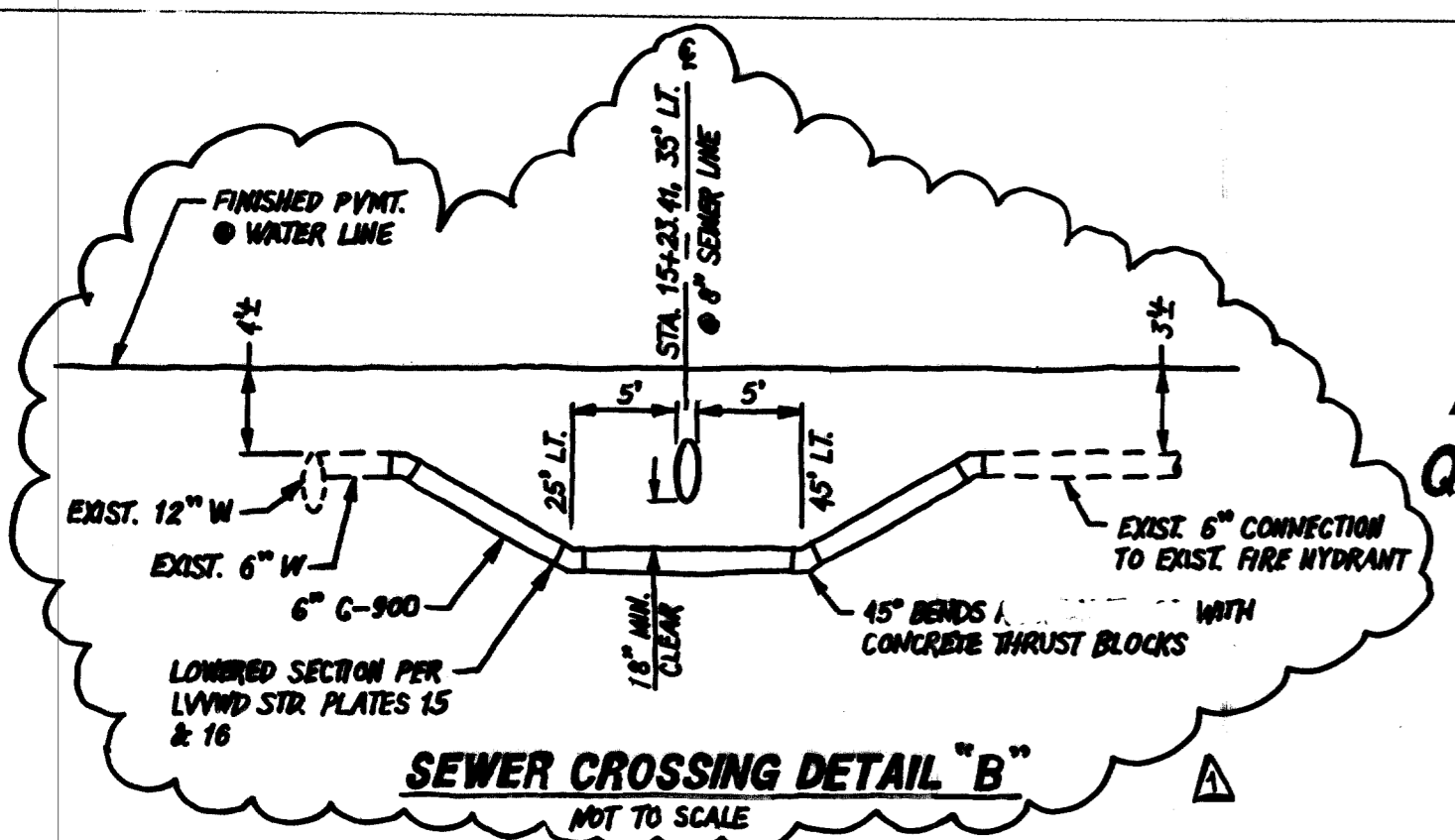


OFF-SITE PUBLIC SEWER & WATER PLAN PANDA EXPRESS

A PORTION OF THE SOUTHWEST QUARTER OF THE SOUTHWEST QUARTER OF SECTION 29, TOWNSHIP 20 SOUTH, RANGE 62 EAST, M.D.M., CLARK COUNTY, NEVADA
A.P.N. # 140-29-401-003



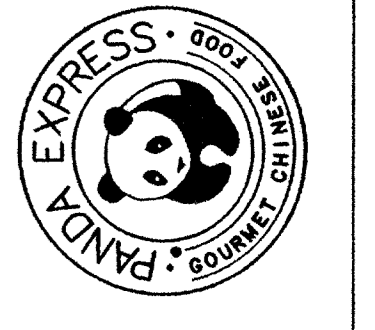
CONSTRUCTION NOTES

- INSTALL 8" P.V.C. SDR-35 SEWER LINE. LENGTH AND SLOPE PER PLAN.
- INSTALL SEWER MANHOLE PER CCSD STD. DETAIL SD-1, SD-2, SD-3B AND SD-7.
- NOT USED.
- CONNECT TO EXISTING MANHOLE. REFORM MANHOLE BENCH IF REQUIRED PER CCSD STD. DETAIL SD-7.
- INSTALL 6" SEWER LATERAL CONNECTION PER CCSD STD. DETAIL SD-17.
- INSTALL 6" P.V.C. SDR-35 SEWER LINE. LENGTH AND SLOPE PER PLAN. CAP AND MARK END AT RIGHT-OF-WAY LINE PER CCSD STD. DETAIL SD-12.
- SAWCUT REMOVE EXISTING A.C. PAVEMENT. REPLACE IN TYPE & KIND. PATCH PER STD. DWG. 504.
- SAWCUT REMOVE EXISTING CURB, GUTTER, & SIDEWALK. REPLACE TYPE & KIND.
- DIP 12" WATER LINE PER LVWD STD. PLATES 15 & 16. SEE CROSSING DETAIL "A" THIS SHEET.
- DIP 6" WATER LINE PER LVWD STD. PLATES 15 & 16. SEE CROSSING DETAIL "B" THIS SHEET.

THE CONTRACTOR SHALL BEGIN SEWER CONSTRUCTION FROM THE EXISTING DOWNSTREAM MANHOLE OR SEWER STUB. PRIOR TO INSTALLATION OF ANY SEWER PIPE, THE SUBCONTRACTOR SHALL EXCAVATE AND EXPOSE THE POINT OF CONNECTION OF NEW SEWER PIPE TO THE EXISTING STUB OR MANHOLE. IF THIS ELEVATION IS DIFFERENT FROM THE DESIGN ON THE PLANS THE SUBCONTRACTOR SHALL NOTIFY THE ENGINEER PRIOR TO CONTINUING.

JERE W. PLANCK
Architect
404 N. CENTRAL AVENUE, SUITE C-100
PHOENIX, ARIZONA 85012
(602) 222-4096
FX (602) 279-4086

PANDA RESTAURANT GROUP
SHOPS BUILDING
N.E.C. OF LAMB BLVD. AND BONANZA ROAD
LAS VEGAS, NEVADA



JOB NO:	03116	
PROJECT MOR:	BEK	
DRAWN BY:	RH	
CHECKED BY:	J. LEMON	
NO.	REVISION	DATE
1	WATERLINE	12/15/04
2	DIP	BEK

THESE DRAWINGS ARE "NOT FOR CONSTRUCTION" UNTIL ALL ITEMS ARE INITIALED AND DATED

INITIAL	DATE

SUBMITTED TO CITY
ISSUED FOR BIDDING
FINAL COORDINATION & APPROVAL HAS NOT BEEN COMPLETED
CITY APPROVAL
ISSUED FOR CONST.
E.C. SHALL BE RESPONSIBLE TO OWNER WITHIN 30 DAYS OF ASSUMING ALL CHANGES

APPROVAL 1st App'l 9/22/04
12/20/04
LAS VEGAS VALLEY WATER DISTRICT
PROJECT 28923

PROJECT #28923 H - 98815
#109825 QS-140-29-SW
2003 UDACS
LANDMARK
ENGINEERING INC
7310 North 16th Street Suite 285
Phoenix, Arizona 85020 602.861.2005

Call before you Dig.
1-800-227-2600

Call before you Overhead
1-702-593-6111

SHEET TITLE:
UTILITY PLAN
PANDA EXPRESS

FILE LOCATION: 3116u02

PLOT DATE: 05-03-04

PROFESSIONAL ENGINEER STATE OF NEVADA
JAMES D. LEMON
Exp. 12/31/05
No. 5988
CIVIL
7/8/04

C-4
SHEET 4 OF 4
107N4078