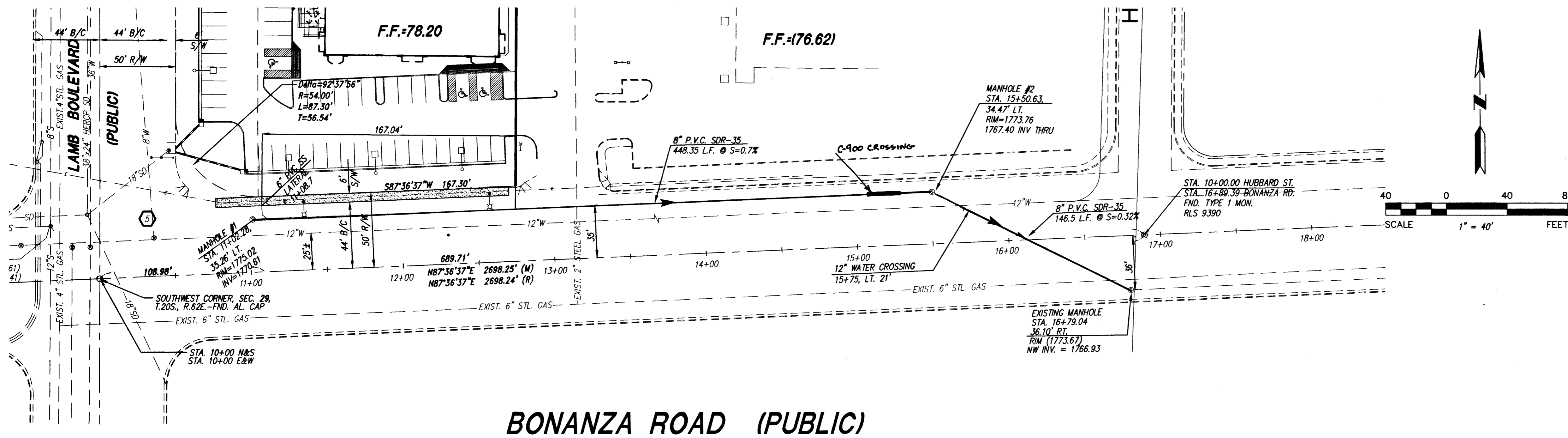


SEWER AS-BUILT DRAWING PANDA EXPRESS

A PORTION OF THE SOUTHWEST QUARTER OF THE SOUTHWEST
QUARTER OF SECTION 29, TOWNSHIP 20 SOUTH, RANGE 62
EAST, M.D.M., CLARK COUNTY, NEVADA
A.P.N. # 140-29-401-003



LEGEND:

- SEWER LATERALS
- SANITARY SEWER MAIN
- ⊙ SANITARY SEWER MANHOLE

QUANTITIES:

SANITARY SEWER MANHOLES	3 EACH
SEWER LATERALS	1 EACH

MATERIALS:

- SEWER — 8" SDR35 PIPE (DIAMOND)
- SEWER MANHOLE — 48" (JENSEN PRECAST)

JERE W. PLANCK
Architect
4041 N. CENTRAL AVENUE, SUITE C-100
PHOENIX, ARIZONA 85012
(602) 722-4766
FAX (602) 279-4886

PANDA RESTAURANT GROUP
SHOPS BUILDING
N.E.C. of LAMB BLVD. AND BONANZA ROAD
LAS VEGAS, NEVADA

JOB NO: 0316
PROJECT MGR: BEK
DRAWN BY: JEL
CHECKED BY: SHU ENG

NO.	REVISION	DATE

THESE DRAWINGS ARE "NOT FOR CONSTRUCTION" UNTIL ALL ITEMS ARE INITIALED AND DATED.

	INITIAL	DATE

SHEET TITLE:
SEWER AS-BUILT
PANDA EXPRESS

FILE LOCATION: PE-ASBLT

PLOT DATE: 1-13-05

ASBUILTS PERFORMED BY SOUTHWEST ENGINEERING
702-648-9700
CONTACT: JAYNE E. LEAVITT
P.L.S. 8002

SHEET 1 OF 1

6852

CLW# 107V407B