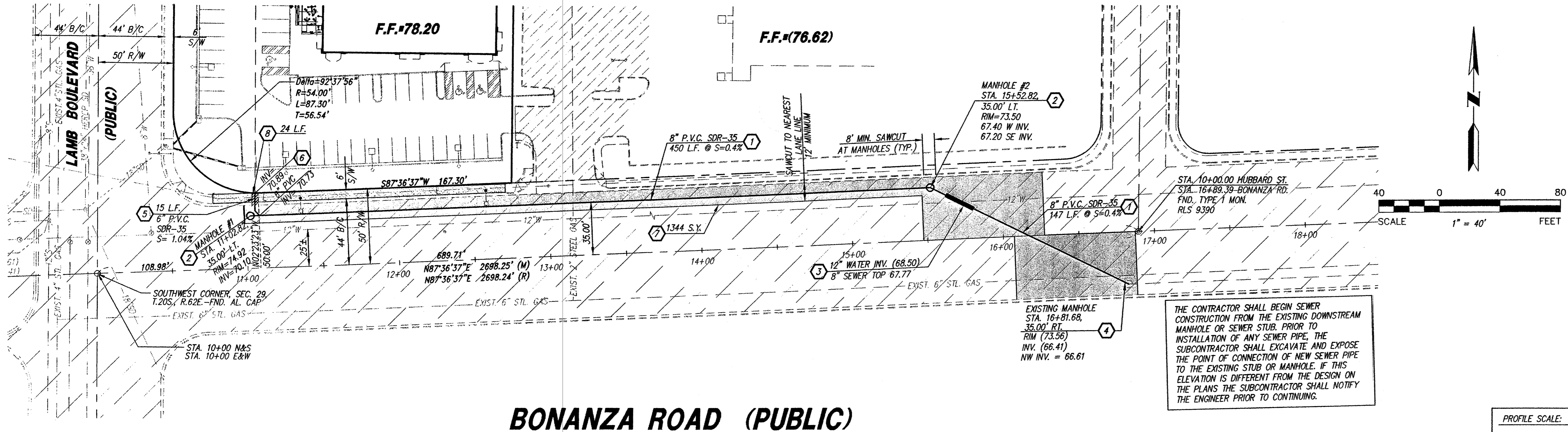


OFF-SITE PUBLIC SEWER PLAN PANDA EXPRESS

A PORTION OF THE SOUTHWEST QUARTER OF THE SOUTHWEST
QUARTER OF SECTION 29, TOWNSHIP 20 SOUTH, RANGE 62 EAST,
M.D.M., CLARK COUNTY, NEVADA
A.P.N. # 140-29-401-003

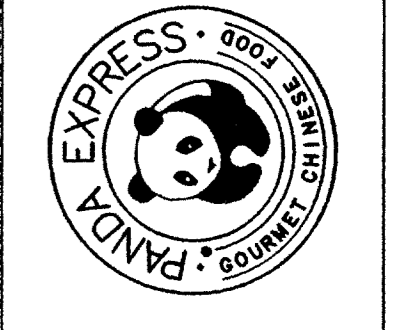


CONSTRUCTION NOTES

1. INSTALL 8" P.V.C. SDR-35 SEWER LINE. LENGTH AND SLOPE PER PLAN.
2. INSTALL SEWER MANHOLE PER CCSD STD. DETAIL SD-1, SD-2, SD-3B AND SD-7.
3. SEWER MAIN SHALL BE TOTALLY ENCASED IN A MINIMUM OF FOUR (4) INCHES OF CEMENT SLURRY (300 P.S.I.) FOR A DISTANCE OF 10' ON EACH SIDE OF THE CROSSING.
4. CONNECT TO EXISTING MANHOLE. REFORM MANHOLE BENCH IF REQUIRED PER CCSD STD. DETAIL SD-7.
5. INSTALL 6" SEWER LATERAL CONNECTION PER CCSD STD. DETAIL SD-17.
6. INSTALL 6" P.V.C. SDR-35 SEWER LINE. LENGTH AND SLOPE PER PLAN. CAP AND MARK END AT RIGHT-OF-WAY LINE PER CCSD STD. DETAIL SD-12.
7. SAWCUT REMOVE EXISTING A.C. PAVEMENT. REPLACE IN TYPE & KIND. PATCH PER STD. DWG. 504.
8. SAWCUT REMOVE EXISTING CURB, GUTTER, & SIDEWALK. REPLACE TYPE & KIND.

JERE W. PLANCK
Architect
4041 N. CENTRAL AVENUE, SUITE C-100
PHOENIX, ARIZONA 85012
PH: (602) 222-4086
FX: (602) 279-4086

PANDA RESTAURANT GROUP
SHOPS BUILDING
N.E.C. OF LAMB BLVD. AND BONANZA ROAD
LAS VEGAS, NEVADA



JOB NO: 03116
PROJECT MOR: BEK
DRAWN BY: RH
CHECKED BY: J. LEMON
DATE

NO.	REVISION	DATE

THESE DRAWINGS ARE "NOT FOR CONSTRUCTION" UNTIL ALL ITEMS ARE INITIALED AND DATED

INITIAL	DATE

SUBMITTED TO CITY FOR BIDDING. FINAL COORDINATION & APPROVAL HAS NOT BEEN COMPLETED.

CITY APPROVAL

ISSUED FOR CONST. CONTRACTOR SHALL BE RESPONSIBLE TO OWNER WITHIN 30 DAYS OF WORKING DATE. ALL CHANGES ASSUMES ALL CHANGES.

SHEET TITLE:
UTILITY PLAN
PANDA EXPRESS

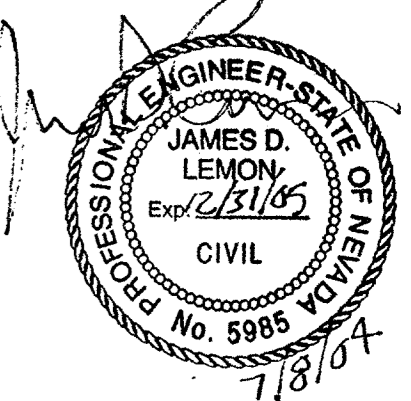
FILE LOCATION: 3116u102

PLOT DATE: 05-03-04

LANDMARK ENGINEERING INC
7310 North 16th Street Suite 285
Phoenix, Arizona 85020 602.861.2005

Call before you Dig.
1-800-227-2600

Call before you Overhead.
1-702-593-6111



C-4
SHEET 4 OF 4
107N4078