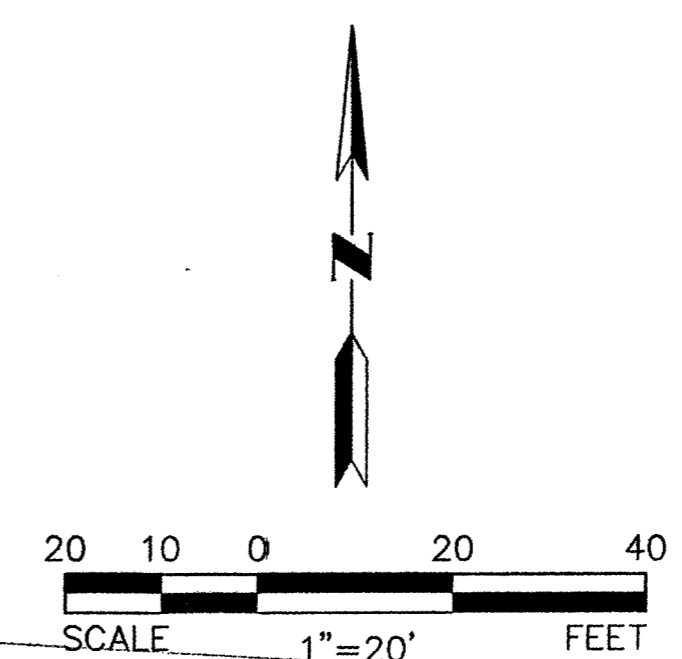


GRADING AND DRAINAGE PLAN

PANDA EXPRESS

A PORTION OF THE SOUTHWEST QUARTER OF THE SOUTHWEST QUARTER OF SECTION 29, TOWNSHIP 20 SOUTH, RANGE 62 EAST, M.D.M., CLARK COUNTY, NEVADA.
A.P.N. # 140-29-401-003

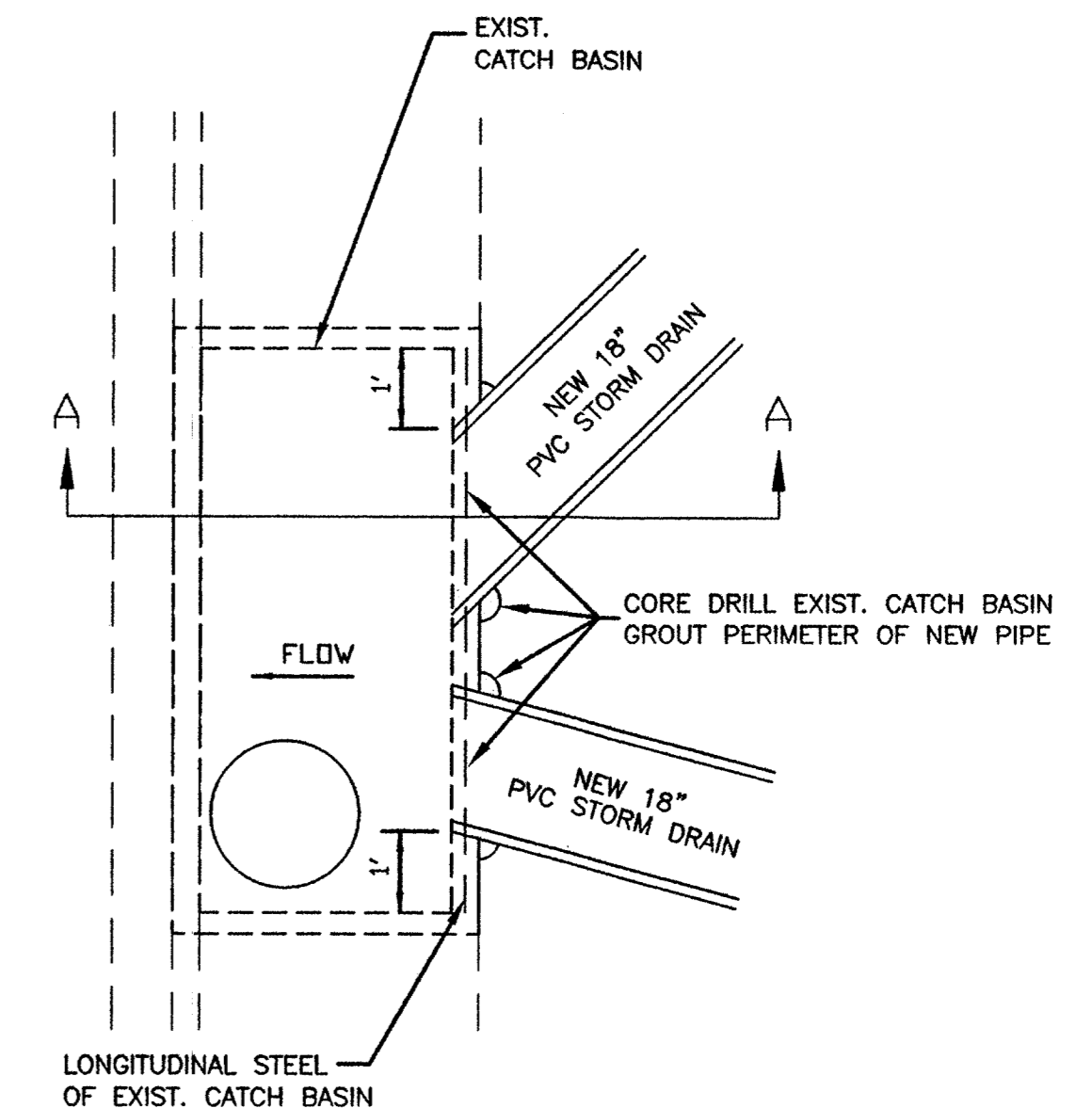


GRADING CONSTRUCTION NOTES

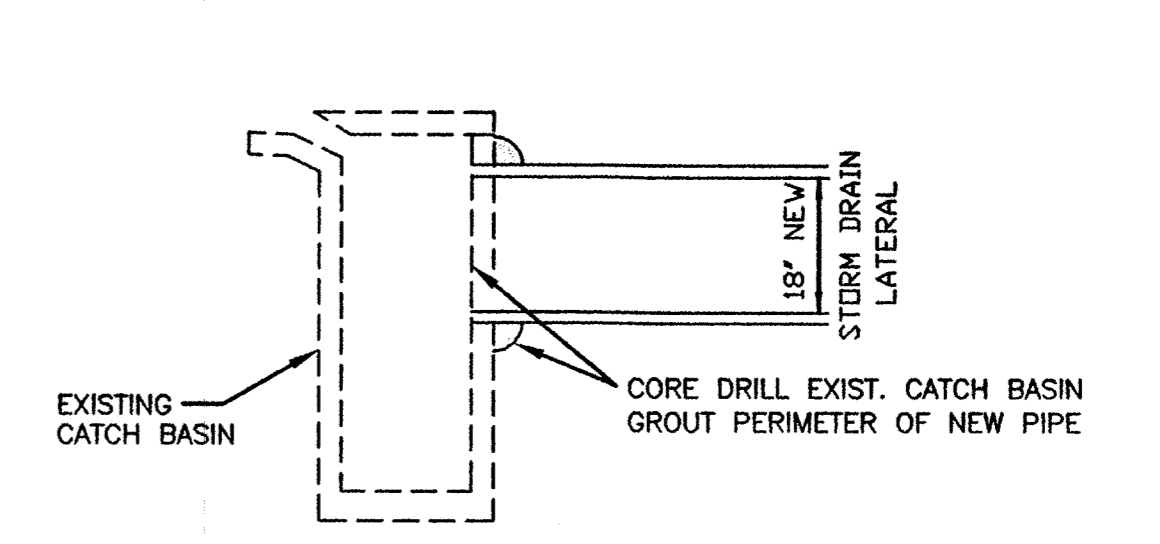
- 1 INSTALL JENSEN PRECAST #2436-4R CURB INLET WITH MEEVAH R-3246 CURB INLET FRAME, GRATE & CURB BOX WITH TYPE "A" GRATE, OR APPROVED EQUAL. CONNECT 18" PVC SDR 35 DRAIN PIPE TO EXISTING STORM DRAIN. MATCH PROPOSED STORM DRAIN'S TOP OF PIPE WITH TOP OF EXISTING AT CATCH BASIN.
- 2 NOT USED.
- 3 CONSTRUCT 2" A.C. OVER 6" A.B.C. PAVEMENT.
- 4 CONSTRUCT 6" VERT. CURB PER CLARK COUNTY STD. DWG. 219, TYPE "A".
- 5 CONSTRUCT 6" VERT. CURB & GUTTER PER CLARK COUNTY STD. DWG. 216.
- 6 CONSTRUCT CONCRETE SIDEWALK PER CLARK COUNTY STD. DWG. 234, WITH TURNDOWN PER DETAIL THIS SHEET.
- 7 CONSTRUCT CONCRETE SIDEWALK RAMP. SEE ARCHITECTURAL PLANS FOR DETAILS AND SPECIFICATIONS. INSTALL HANDRAIL AS SHOWN PER ADA REQUIREMENTS.
- 8 TRASH ENCLOSURE. SEE ARCHITECTURAL PLANS FOR DETAILS AND SPECIFICATIONS.
- 9 MATCH EXISTING PAVEMENT. CONTRACTOR TO ADJUST SAWCUT AND PAVEMENT MATCH LINE FOR ACTUAL FIELD CONDITIONS.
- 10 REMOVE AND DISPOSE OF EXISTING CURB AND GUTTER.
- 11 PROPOSED LIGHTING (BY OTHERS).
- 12 CONSTRUCT 6" CONCRETE SIDEWALK PER CLARK COUNTY STD. DWG. 234.



SIDEWALK TURNDOWN



PLAN VIEW

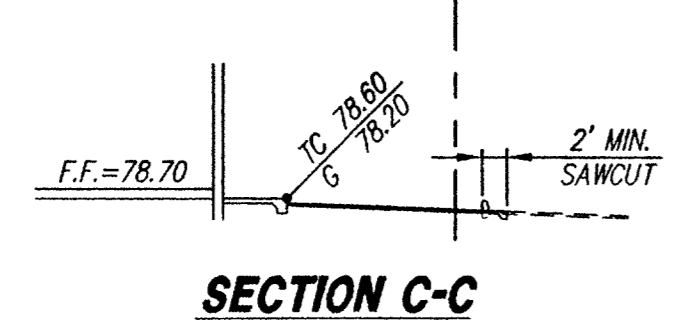
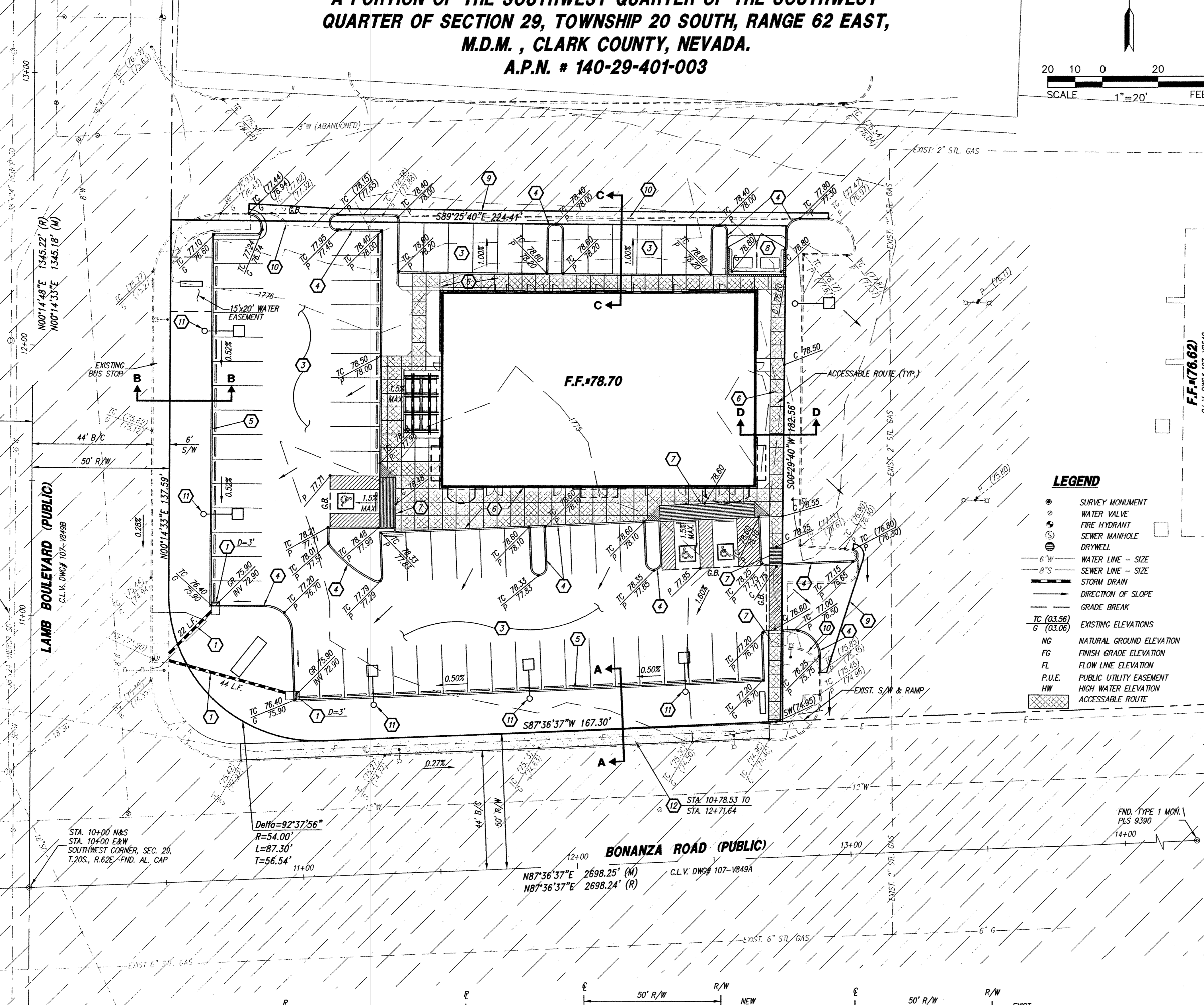


SECTION A-A

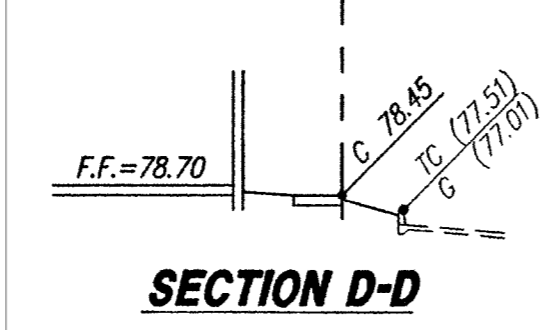


LEGEND

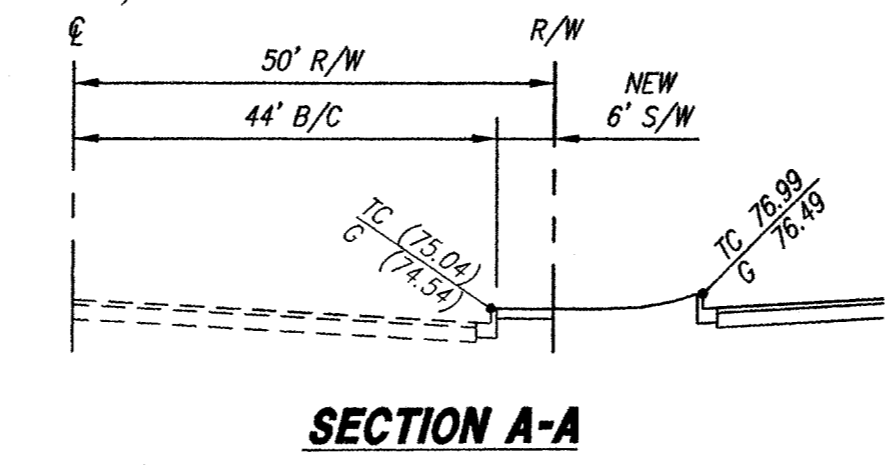
- SURVEY MONUMENT
- WATER VALVE
- FIRE HYDRANT
- SEWER MANHOLE
- DRYWELL
- 6" W WATER LINE - SIZE
- 8" S SEWER LINE - SIZE
- STORM DRAIN
- DIRECTION OF SLOPE
- GRADE BREAK
- TC (03.56) EXISTING ELEVATIONS
- G (03.06)
- NG NATURAL GROUND ELEVATION
- FG FINISH GRADE ELEVATION
- FL FLOW LINE ELEVATION
- P.U.E. PUBLIC UTILITY EASEMENT
- HW HIGH WATER ELEVATION
- ACCESSIBLE ROUTE



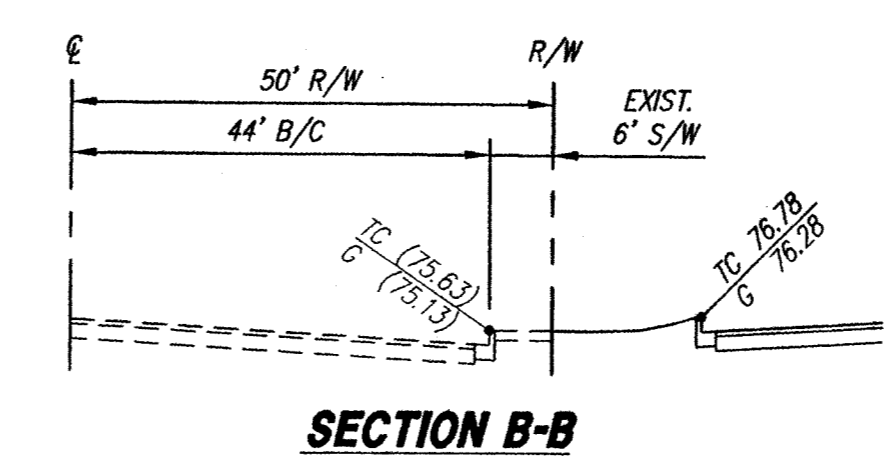
SECTION C-C



SECTION D-D



SECTION A-A



SECTION B-B

Call before you Dig.

1-800-227-2600

Call before you Overhead.

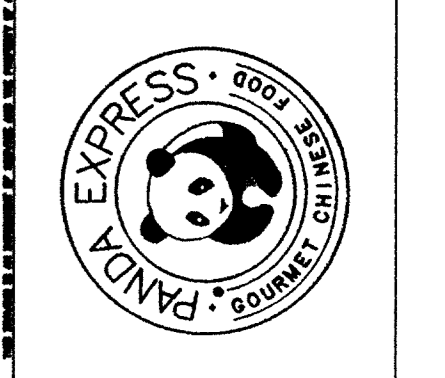
1-702-593-6111

LANDMARK ENGINEERING INC

7310 North 16th Street Suite 285
Phoenix, Arizona 85008 602.861.2005

JERE W. PLANCK
Architect
4441 N. CENTRAL AVENUE, SUITE C-100
PHOENIX, ARIZONA 85012
(602) 272-4286
FAX (602) 278-4086

PANDA RESTAURANT GROUP
SHOPS BUILDING
N.E.C. of LAMB BLVD. AND BONANZA ROAD
LAS VEGAS, NEVADA



JOB NO:	03116	
PROJECT MGR:	BEK	
DRAWN BY:	RH	
CHECKED BY:	J. LEMON	
NO.	REVISION	DATE

THESE DRAWINGS ARE NOT FOR CONSTRUCTION UNTIL ALL ITEMS ARE INITIALED AND DATED.

	INITIAL	DATE

SUBMITTED TO CITY:
ISSUED FOR BIDDING:
FINAL COORDINATION & APPROVAL HAS NOT BEEN COMPLETED

CITY APPROVAL:

ISSUED FOR CONST.
C.C. SHALL REVIEW AND SIGN OFFERS WITHIN WORKING DAYS OR C.C. ASSUMES ALL CHARGES

SHEET TITLE:
GRADING & DRAINAGE PLAN
PANDA EXPRESS

FILE LOCATION: 3116gr02

PLOT DATE: 06-07-04

REGISTERED PROFESSIONAL ENGINEER - STATE OF NEVADA
JAMES D. LEMON
Exp. 12/31/08
CIVIL
No. 5985