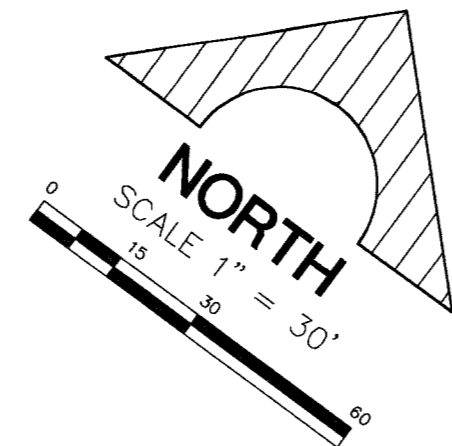
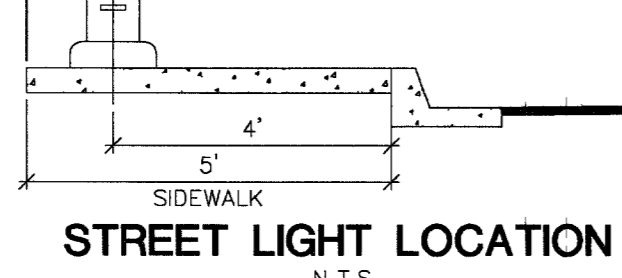


BASIS OF BEARING

N00°20'25"W BEING THE CENTERLINE OF THOM BOULEVARD AS SHOWN IN BOOK OF PLATS, BOOK 3, PAGE 86 IN THE OFFICE OF THE CLARK COUNTY RECORDER

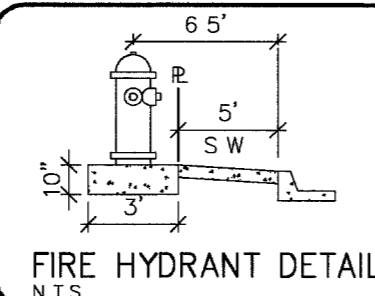
STREET LIGHT NOTE:

ALL HAND HOLE COVERS MUST BE INSTALLED. POLE CAPS POURED AND FULL BOX USED. BOLTED DOWN PRIOR TO ENERGIZING CIRCUIT. ALL WIRE MUST HAVE THW INSULATION.



NOTE:

OWNER OF PROPERTY AGREES THAT REMOVAL OF THE EXISTING WEST WALL OVER EXISTING 6" WATER LINE AS SHOWN ON THIS DRAWING, OWNER WILL BE FULLY RESPONSIBLE FOR ANY DAMAGE AND REPAIRS TO SAID 6" WATER LINE.



NOTES

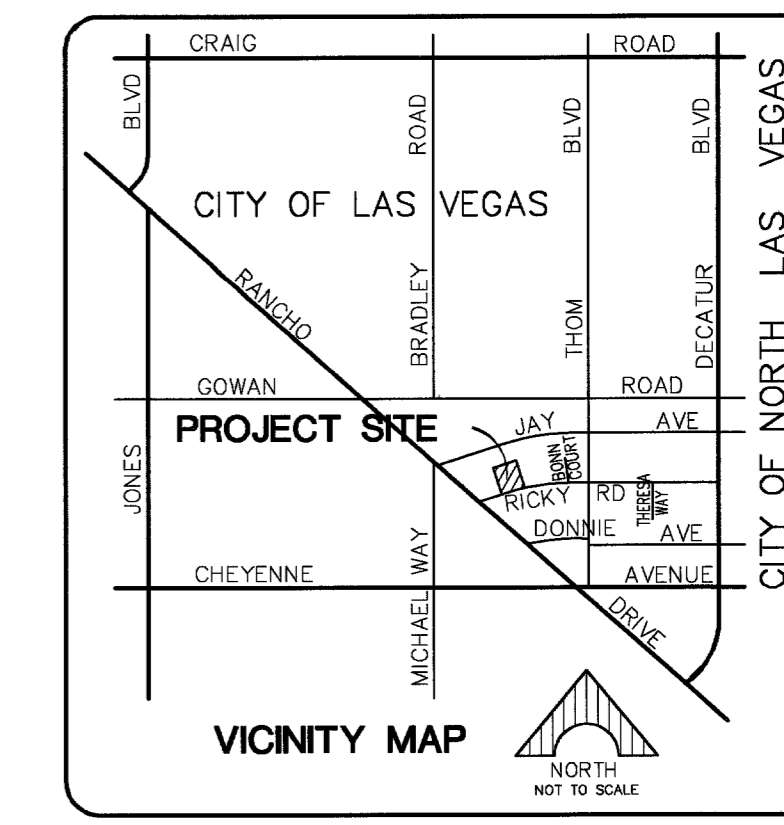
ALL WATER FACILITIES CONSTRUCTION SHALL BE IN ACCORDANCE WITH THE "UNIFORM DESIGN AND CONSTRUCTION STANDARDS FOR WATER DISTRIBUTION SYSTEMS" (UDACS), LATEST EDITION

CLV FIRE DEPT. NOTES

- 1 ALL WORK SHALL BE DONE IN STRICT ACCORDANCE WITH THE CITY OF LAS VEGAS FIRE DEPARTMENT'S ORDINANCE #5667, "HYDRANT SPECIFICATIONS", AND "HYDRANT INSTALLATION SPECIFICATION"
- 2 AUTHORIZED FIRE HYDRANTS FOR THIS PROJECT ARE:
A KENNEDY - GUARDIAN MODELS K81A AND K81D
B MUELLER - SUPER CENTURION 250 MODEL A-423
C CLOW - MEDALLION MODEL F-2546(L)D
D TROY VALVE - PATRIOT MODEL PT8100N NEVADA HYDRANT
E U.S. PIPE - METROFLOW/M-03
- 3 ON ANY RESIDENTIAL OR COMMERCIAL INSTALLATIONS FIRE HYDRANTS SHALL BE INSTALLED AND FIRE APPARATUS ACCESS ROADS SHALL BE MAINTAINED BEFORE COMMENCEMENT OF ANY COMBUSTIBLE CONSTRUCTION. ALL FIRE HYDRANTS SHALL BE IN GOOD WORKING ORDER AND SHALL BE CAPABLE OF DELIVERING THE REQUIRED FIRE FLOW
- 4 TO IDENTIFY THE FIRE HYDRANT LOCATIONS, CONTRACTOR SHALL PLACE A BLUE REFLECTIVE MARKER AT THE CENTER LINE OF STREET ADJACENT TO THE FIRE HYDRANTS AS REQUIRED BY ORDINANCE #5667
- 5 ALL UNDERGROUND INSPECTIONS, PRESSURE AND FLUSH VERIFICATIONS OF ALL FIRE HYDRANTS AND FIRE LINES, SHALL BE CONDUCTED BEFORE COVERING THE LINES. CALL THE CITY OF LAS VEGAS INSPECTION HOT-LINE AT 229-2071 TO REQUEST AN INSPECTION BY THE CITY OF LAS VEGAS FIRE DEPARTMENT
- 6 PAINTING OF THE CURBS AND FIRE HYDRANTS AND ALL OTHER WORK NECESSARY AS REQUIRED BY ORDINANCE #5667, FOR THE PROTECTION OF FIRE HYDRANTS FROM PHYSICAL DAMAGE, SHALL BE COMPLETED BEFORE APPROVAL BY THE CITY OF LAS VEGAS FIRE DEPARTMENT
- 7 A PERMIT IS REQUIRED FROM THE CITY OF LAS VEGAS FIRE DEPARTMENT FOR THE ON-SITE WATER LINES AND FIRE HYDRANTS. THE PERMIT AND CONTRACTOR'S MATERIAL AND TEST CERTIFICATE FOR UNDERGROUND PIPING WORK SHALL BE OBTAINED FROM THE FIRE PROTECTION ENGINEER BEFORE COMMENCEMENT OF WORK
- 8 PRIVATE FIRE HYDRANTS SHALL BE PAINTED RED
- 9 PRIOR TO THE FINAL OCCUPANCY, A FLOW TEST MUST BE WITNESSED BY THE CITY OF LAS VEGAS FIRE DEPARTMENT TO VERIFY AVAILABILITY OF THE REQUIRED FIRE FLOW
- 10 ALL ON-SITE UNDERGROUND WATER MAINS AND MATERIALS SHALL BE U.L. LISTED, A.W.A APPROVED, AND SHALL BE RATED FOR THE APPROPRIATE WORKING PRESSURE
- 11 FIRE HYDRANTS SPACING SHALL BE:
RESIDENTIAL - 500 FEET UNSPRINKLERED, 600 FEET SPRINKLERED
COMMERCIAL - 300 FEET UNSPRINKLERED, 400 FEET SPRINKLERED
- 12 WHERE NEW WATER MAINS ARE EXTENDED ALONG STREETS OR NEW STREETS ARE INSTALLED WHERE FIRE HYDRANTS ARE NOT NEEDED FOR PROTECTION OF THE STRUCTURES, FIRE HYDRANTS SHALL BE INSTALLED AT MAXIMUM 1,000 FOOT SPACING, TO PROVIDE FOR TRANSPORTATION HAZARDS. WHERE STREETS ARE PROVIDED WITH MEDIAN DIVIDERS OR HAVE FOUR OR MORE TRAFFIC LANES AND HAVE A TRAFFIC COUNT OF MORE THAN 30,000 PER DAY, HYDRANTS ARE REQUIRED ON EACH SIDE OF THE STREET SPACING AT AN ALTERNATE BASIS
- 13 NO FIRE HYDRANTS SHALL BE LOCATED WITHIN THE REQUIRED RADIUS OF A CUL-DE-SAC OR WITHIN 20 FEET OF THE PERIMETER OF THE RADIUS OF THE CUL-DE-SAC
- 14 NO FIRE HYDRANTS SHALL BE LOCATED WITHIN 6 FEET OF ANY CURB RETURN, DRIVEWAY, POWER POLE, STREETLIGHT OR ANY OTHER OBSTRUCTION
- 15 THE MAXIMUM DISTANCE FROM A FIRE HYDRANT TO A ONE-TWO FAMILY DWELLING SHALL NOT EXCEED 300 FEET, AS MEASURED BY AN APPROVED ROUTE
- 16 THE MAXIMUM DISTANCE FROM A FIRE HYDRANT TO A FIRE DEPARTMENT CONNECTION (FDC) SHALL NOT EXCEED 100 FEET, AS MEASURED BY AN APPROVED ROUTE
- 17 THE MAXIMUM DISTANCE FROM A FIRE HYDRANT TO THE END OF A DEAD-END STREET SHALL NOT EXCEED 200 FEET
- 18 TWO SOURCES OF SUPPLY ARE REQUIRED WHENEVER THERE ARE 4 OR MORE FIRE HYDRANTS/SPRINKLER LEAD-INS ARE INSTALLED ON A SINGLE SYSTEM. SECTIONAL CONTROL VALVES SHALL BE INSTALLED SO THAT NO MORE THAN 2 FIRE HYDRANTS/HYDRANTS CAN BE OUT OF SERVICE DUE TO A BREAK IN A WATER MAIN
- 19 ALL FIRE APPARATUS ACCESS ROADS SHALL BE PAVED TO PROVIDE ALL-WEATHER DRIVING CAPABILITIES, AND SHALL BE DESIGNED AND MAINTAINED TO SUPPORT THE IMPOSED LOADS OF THE FIRE APPARATUS
- 20 THE GRADIENT FOR A FIRE APPARATUS ACCESS ROADS SHALL NOT EXCEED 12% ANGLES OF APPROACH AND ANGLES OF DEPARTURE SHALL NOT EXCEED 6% FOR 25 FEET PRIOR TO OR AFTER THE GRADE CHANGE. ADJACENT TO THE STRUCTURES GRADIENT SHALL NOT EXCEED 6%
- 21 THE TURNING RADIUS OF THE FIRE APPARATUS ACCESS ROADS SHALL BE NO LESS THAN 32 FEET OUTSIDE AND 28 FEET INSIDE TURNING RADIUS
- 22 VERTICAL CLEARANCE OF ALL FIRE APPARATUS ACCESS ROADS SHALL BE NOT LESS THAN 13 FEET 6 INCHES
- 23 FIRE DEPARTMENT ACCESS ROADS IN ALL RESIDENTIAL DEVELOPMENTS (EXCEPT FOR THE APARTMENT BUILDINGS) SHALL HAVE A MINIMUM UNOBSTRUCTED WIDTH OF NOT LESS THAN 36 FEET TO THE FLOW LINE. THIS WIDTH MAY BE REDUCED TO 24 FEET, IF ALL BUILDINGS FRONTING THE STREET ARE SPRINKLERED) FOR MAIN RESIDENTIAL STREETS, WITH PARKING PERMITTED ON BOTH SIDES OF THE STREET. PRIVATE DRIVE ALLEYS, DRIVEWAYS, ETC. SHALL BE ALLOWED TO BE REDUCED TO A MINIMUM WIDTH OF 24 FEET TO THE FLOW LINE TO THE FLOW LINE WHEN SERVING NO MORE THAN 6 RESIDENCES, AND WHEN ON STREET PARKING IS DISALLOWED
- 24 ALL FIRE APPARATUS ACCESS ROADS IN COMMERCIAL DEVELOPMENTS AND APARTMENT COMPLEXES SHALL HAVE A MINIMUM UNOBSTRUCTED WIDTH OF NOT LESS THAN 24 FEET (FLOW LINE TO THE FLOW LINE), PROVIDED NO PARKING IS ALLOWED ON EITHER SIDE, 32 FEET (FLOW LINE TO THE FLOW LINE), IF PARALLEL PARKING IS ALLOWED ON ONE SIDE ONLY, AND 40 FEET (FLOW LINE TO THE FLOW LINE), IF PARALLEL PARKING IS ALLOWED ON BOTH SIDES. THESE WIDTHS MAY BE REDUCED BY 4 FEET IF ALL BUILDINGS ARE SPRINKLERED
- 25 A FIRE DEPARTMENT ACCESS ROAD SHALL EXTEND TO WITHIN 50 FEET OF A SINGLE EXTERIOR DOOR PROVIDING ACCESS TO THE INTERIOR OF THE BUILDING
- 26 A FIRE APPARATUS ACCESS ROAD SHALL BE REQUIRED WHEN ANY PORTION OF AN EXTERIOR WALL OF THE FIRST STORY IS LOCATED MORE THAN 150 FEET FROM A FIRE DEPARTMENT VEHICLE ACCESS. THIS DISTANCE COULD BE INCREASED TO 250 FEET IF THE BUILDING IS SPRINKLERED
- 27 APPROVED SECONDARY FIRE APPARATUS ACCESS SHALL BE PROVIDED FOR 100 OR MORE DWELLING UNITS, ROADS) WITH DEAD-ENDS OR WITH A SINGLE POINT OF ACCESS IN EXCESS OF 600 FEET, AND FOR ALL COMMERCIAL, INDUSTRIAL, AND MULTI-FAMILY RESIDENTIAL DEVELOPMENTS
- 28 ALL DEAD-END FIRE APPARATUS ACCESS ROADS AND OR FIRE LANES, PUBLIC OR PRIVATE, IN EXCESS OF 150 FEET IN LENGTH SHALL BE PROVIDED WITH AN APPROVED TURN ARROUND HAVING A MINIMUM DIAMETER OF 81 FEET
- 29 ALL FIRE APPARATUS ACCESS ROADS SHALL BE MARKED BY PLACING APPROVED SIGNS AT THE START OF THE DESIGNATED FIRE LANE, ONE SIGN AT THE END OF THE FIRE LANE AND WITH SIGNS AT INTERVALS 100 FEET ALONG ALL DESIGNATED FIRE LANES. SIGNS TO BE PLACED ON BOTH SIDES OF AN ACCESS ROADWAY IF NEEDED TO PREVENT PARKING ON EITHER SIDE. SIGNS TO BE INSTALLED NO HIGHER THAN 10 FEET OR LESS THAN 8 FEET FROM ROADWAY LEVEL. THE CURB ALONG OR ON THE PAVEMENT OR CEMENT IF A CURB IS NOT PROVIDED SHALL BE PAINTED WITH A RED WEATHER RESISTANT PAINT IN ADDITION TO THE SIGNS
- 30 ELECTRICALLY CONTROLLED ACCESS GATES SHALL BE PROVIDED WITH AN APPROVED EMERGENCY VEHICLE DETECTOR/RECEIVER SYSTEM. SAID SYSTEM SHALL BE INSTALLED IN ACCORDANCE WITH THE CITY OF LAS VEGAS GUIDELINES FOR AUTOMATIC EMERGENCY VEHICLE ACCESS GATES

STANDARD SPECIFICATION AND STANDARD DRAWINGS FOR WATER LINE CONSTRUCTION

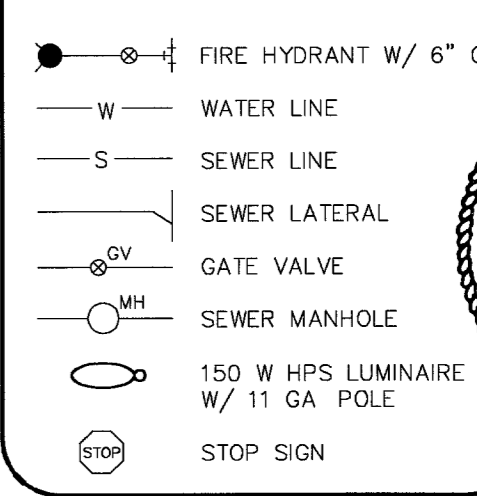
- A All water improvements shown on these construction drawings shall conform to the standards described below, and in order of the precedence shown
- 1 "City of North Las Vegas Municipal Water Service District Service Rules and Regulations," latest edition
 - 2 "Uniform Design and Construction Standards for Water Distribution Systems, Clark County Nevada," latest edition
 - 3 "Uniform Standard Specifications for Public Works Construction Off-site Improvements, Clark County Area, Nevada," latest edition
- B Exceptions to these Standards are noted below
- 1 No water main may be shut down to make connections without prior approval of the City of North Las Vegas representative
 - 2 Materials used for water distribution facilities shall be included on the "City of North Las Vegas Approved Materials List," latest revision, or specifically identified and approved on these plans
 - 3 All water meters two (2) inches and smaller shall be obtained from the City of North Las Vegas. Requests for water meters must be made to the North Las Vegas Utilities Division at least one (1) business day prior to pickup (Telephone number (702)633-1277)
 - 4 The City of North Las Vegas Trench Backfill Policy, dated August 15, 1996, shall be implemented for this project
- C Modifications and classifications to these Standards are as noted below.
- 1 All service laterals two (2) inches and smaller shall be copper tubing with approved service saddles. Corporation stops and angle meter stops shall be the same size as the service lateral. Angle meter stops and meter shall be centered in the meter box
 - 2 A single pipe material shall be used throughout the project unless otherwise approved by the City of North Las Vegas representative
 - 3 All meter boxes shall be equipped with traffic bearing covers and installed to the finish design grade and elevation. If such is not shown on the plans, the elevation will be established by the City of North Las Vegas representative
 - 4 All valves will be located outside of driveways, valley gutters, and curb gutters
 - 5 No utility boxes shall be located in driveway approaches, unless approved by the Utilities Division
 - 6 All new fire hydrants shall have a 5 1/4 - inch valve opening
 - 7 Warning tape shall be required above all water mains, service laterals that are six (6) inches and larger, and any service lateral not installed perpendicular to the main line
 - 8 All water mains shall be filled, pressure tested to 200 PSI, disinfected, flushed, refilled and an acceptable water sample obtained, prior to connection to the City of North Las Vegas water distribution system. Water quality samples will be collected by the City. Contact City of North Las Vegas Utility Division twenty-four (24) hours in advance to schedule sampling
 - 9 All backflow prevention assemblies shall be tested and certified by the City of North Las Vegas prior to placing the water system in service. Contact City of North Las Vegas Utility Division twenty-four (24) hours in advance to schedule testing
 - 10 Record drawings shall be prepared, signed and submitted to the City of North Las Vegas representative prior to final acceptance of any water distribution facilities to be owned, operated or maintained by the City of North Las Vegas



SEWER CONNECTION NOTE

ONE OR MORE SEGMENTS OF THE DOWNSTREAM SEWER SYSTEM THAT WILL SERVE THIS PROJECT HAS NOT BEEN COMPLETED AND/OR ACCEPTED FOR MAINTENANCE BY THE CITY OF LAS VEGAS. ANY WORK DONE ON THIS PROJECT PRIOR TO THE COMPLETION AND/OR ACCEPTANCE OF THE DOWNSTREAM SEWER SYSTEM(S) SHALL BE DONE AT THE DEVELOPER'S OWN RISK. THE CITY OF LAS VEGAS RESERVES THE RIGHT TO PREVENT THE PHYSICAL CONNECTION OF THIS PROJECT INTO THE DOWNSTREAM SEWER SYSTEM UNTIL ALL SEGMENTS HAVE BEEN COMPLETED AND ACCEPTED FOR MAINTENANCE, OR UNTIL SUCH TIME AS THEY ARE DEEMED AVAILABLE FOR SERVICE

LEGEND



FIRE HYDRANT RELOCATION AND LATERAL ABANDONMENT (EXISTING LATERAL TO BE ABANDONED)

WHERE SHOWN ON THE DRAWING(S), THE CONTRACTOR SHALL ABANDON THE EXISTING FIRE HYDRANT(S) BY REMOVING BOTH THE UPPER AND LOWER BARRELS OF THE FIRE HYDRANT SO THAT NO PORTION OF THE REMAINING FIRE HYDRANT ASSEMBLY IS CLOSER THAN 2 FEET TO THE EXISTING GRADE. THE EXISTING HYDRANT SHALL BE INSTALLED AT THE NEW LOCATION AS INDICATED ON THE DRAWING, IN ACCORDANCE WITH STANDARD PLATE NO. 7. THE EXISTING VALVE SHALL BE ABANDONED IN A CLOSED POSITION AND A MINIMUM OF THE TOP 12 INCHES OF THE VALVE BOX REMOVED. THE REMAINING PORTION OF THE VALVE BOX SHALL BE FILLED WITH CONCRETE HAVING A COMPRESSIVE STRENGTH OF AT LEAST 2,000 PSI. THE REMAINING PORTION OF THE HOLE MAY BE FILLED WITH CONCRETE OR ASPHALT GEMENT. THE LATERAL SHALL BE CUT AND CAPPED WHERE INDICATED. WHERE A JOINT OR COUPLING IN THE EXISTING PIPE IS UNCOVERED AT THE CUT AND CAP LOCATION, THE INSTALLATION OF A PLUG MAY BE PERMITTED, WITH AGENCY APPROVAL. A CONCRETE THRUST BLOCK SHALL BE INSTALLED AT ALL CUT AND CAP LOCATIONS IN ACCORDANCE WITH THE PROVISIONS OF STANDARD PLATE NO. 5

ESTIMATE OF WATER QUANTITIES (PUBLIC)

RELOCATE STD F H W/ 6" LAT & GATE VALVE	PER UDACS PLATE NO 7	1 EA
3/4" RPPA ASSEMBLY PER UDACS PLATE NO 11A		5 EA
3/4" WATER METER	PER UDACS PLATE NO 1C	5 EA
METER BOX		5 EA
1" WATER SERVICE LATERAL		108 LF
6" 90° ELBOW		4 EA
6" WET TAPPING TEE		2 EA
6" DCCA ASSEMBLY PER UDACS PLATE NO 20B		1 EA
6" WATER SERVICE LATERAL		105 LF

NOTES

- A) SEPARATE DOMESTIC AND FIRE SERVICES (WHERE APPLICABLE) ARE REQUIRED FOR EACH REQUIRED FOR EACH DWELLING UNIT, PUBLIC, QUASI-PUBLIC, COMMERCIAL, AND/OR INDUSTRIAL OCCUPANCY LOCATED ON A SINGLE PARCEL OR LOT**
- B) IN THE EVENT THAT A BUILDING WITHIN AN INDUSTRIAL OR COMMERCIAL SUBDIVISION IS DIVIDED, SEPARATE DOMESTIC SERVICES ARE REQUIRED FOR EACH UNIT**
- C) EACH PARCEL OR LOT OF A COMMERCIAL OR RESIDENTIAL SUBDIVISION WILL HAVE A MINIMUM OF ONE (1) METERED DOMESTIC SERVICE. WHEN A FIRE SERVICE IS REQUIRED, EACH PARCEL OR LOT WILL HAVE A MINIMUM OF ONE (1) FIRE SERVICE. THE CITY, AT ITS OPTION, MAY ALLOW A COMMUNAL FIRE SERVICE PROVIDED THE PROPERTY OWNERS FIRST ESTABLISHED A PROPERTY MANAGEMENT ASSOCIATION WHICH ACCEPTS RESPONSIBILITY FOR THE PAYMENT OF WATER BILLS AND THE MAINTENANCE AND OPERATIONS OF THE FIRE LINES AND BACKFLOW PREVENTION ASSEMBLY**
- THE ON-SITE WATER LINES AND APPURTENANCES ARE PRIVATE FACILITIES NOT TO BE OPERATED BY THE CITY OF NORTH LAS VEGAS
- WATER AND SEWER SERVICE LATERALS SHALL BE INSTALLED A MINIMUM OF FORTY-EIGHT (48) INCHES APART IN SEPARATE TRENCHES. WATER LATERALS SHALL BE A MINIMUM OF TWELVE (12) INCHES ABOVE THE SEWER LATERAL (REF. UNIFORM PLUMBING CODE)
- FIRE SERVICE AND DOMESTIC WATER, AS APPROVED ON THIS PLAN, ARE INTENDED SPECIFICALLY FOR THE LOT AND USE SHOWN, AND ARE NOT INTENDED TO SERVE ADDITIONAL PARCELS AND/OR LOTS
- IF THE PARCEL AND/OR LOTS SHOWN ON THIS PLAN ARE FURTHER DIVIDED TO CREATE ADDITIONAL PARCELS OR LOTS, THE OWNER IS REQUIRED TO PROVIDE SEPARATE FIRE AND DOMESTIC SERVICES TO EACH

FIRE FLOW CALCULATIONS

FIRE FLOW REQUIREMENT IS 1,500 GALLONS PER MINUTE AT 20 PSI RESIDUAL PRESSURE

BASED ON:

SQUARE FOOTAGE: 7,018 SF

LARGEST AREA BETWEEN 4 HOURS AREA SEPARATION WALLS: SF

BUILDING HEIGHT: 27'-9" @ HIGHEST ROOF

NUMBER OF STORIES: VB

TYPE OF CONSTRUCTION: VB

OCCUPANCY: B & S2

FULL AUTOMATIC FIRE SPRINKLER SYSTEM.

YES NO

REVIEWED BY: [Signature] DATE: 9/9/05

APPROVAL :

[Signature] 11/7/05 DATE
RANDAL D. CAGLE
ONLY MANAGER OF REAL PROPERTY SERVICES

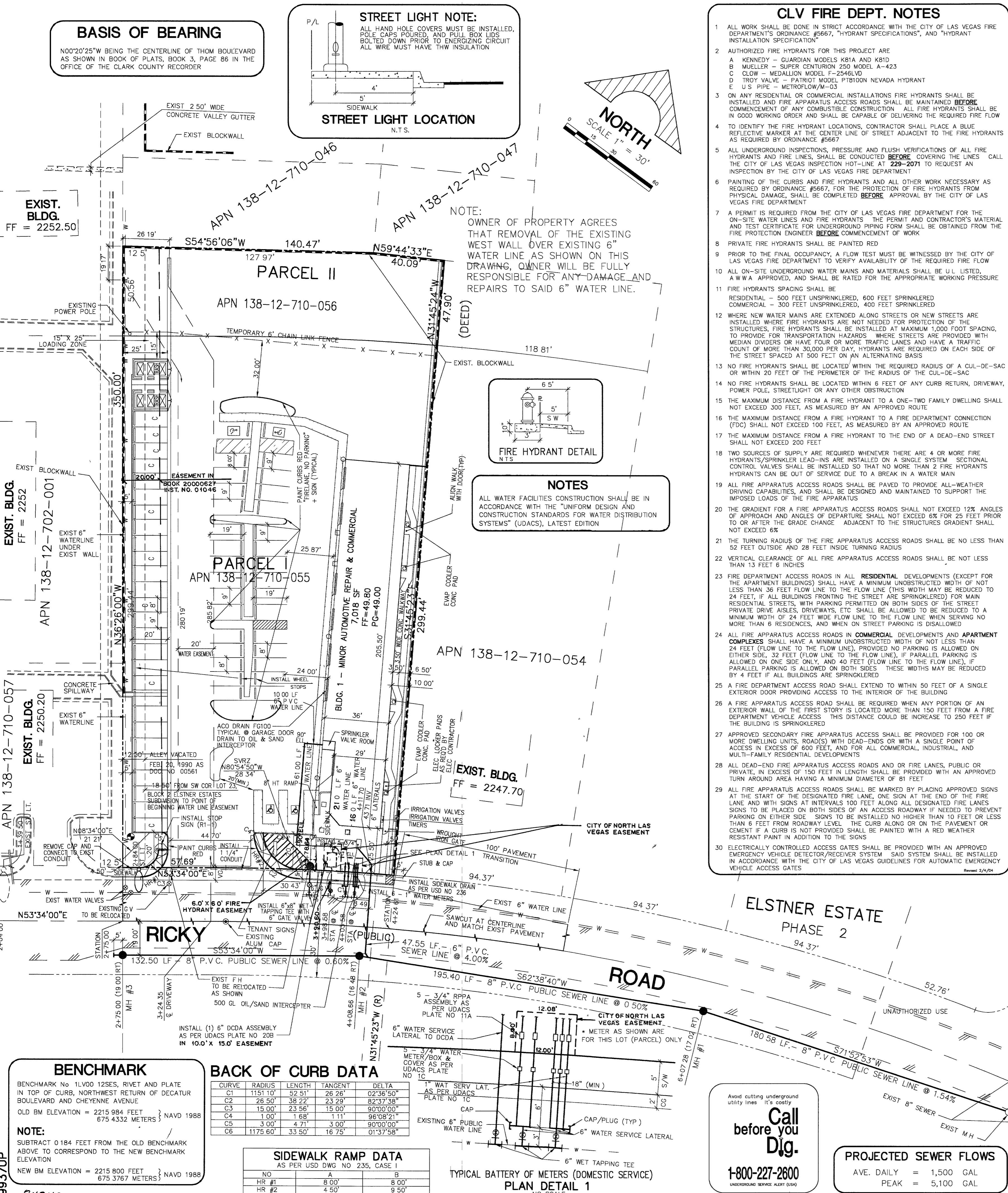
[Signature] 10/17/05 DATE
ONLY UTILITIES DEPARTMENT-
ENGINEERING SERVICES DIVISION

Approval of these plans shall not be construed to be a permit for construction, a commitment to supply water and/or sewer service or an approval of any violation of CNLV Water and/or Sewer Service Rules and Regulations or design and construction standards.

CLV SEWER NOTES

- 1 ALL CONSTRUCTION AND MATERIALS SHALL BE IN ACCORDANCE WITH THE LATEST EDITION OF THE DESIGN AND CONSTRUCTION STANDARDS FOR WASTEWATER COLLECTION SYSTEMS AND THE UNIFORM STANDARD SPECIFICATIONS FOR PUBLIC WORKS CONSTRUCTION OFF-SITE IMPROVEMENTS, CLARK COUNTY AREA, NEVADA, AS AMENDED. IT WILL BE THE RESPONSIBILITY OF THE CONTRACTOR TO BE AWARE OF THE CONTENTS OF THE ABOVE SPECIFICATIONS
- 2 IT SHALL BE THE CONTRACTOR'S RESPONSIBILITY TO PERFORM CONSTRUCTION AS PER PLANS. ANY ADDITIONS, DELETIONS, OR CHANGES SHALL FIRST MEET WITH THE APPROVAL OF THE CITY ENGINEER.
- 3 CHISEL "S" OR "G" IN CURBS WHERE SEWER OR GAS LATERALS PASS UNDER THE CURB
- 4 POLYVINYL (PVC) SEWER PIPE SHALL MEET ASTM D-3034 SDR 35 SPECIFICATIONS INSTALLED WITH SAND BEDDING AND BACKFILL OF TYPE II AGGREGATE BASE
- 5 ALL MANHOLES PAVED IN STREETS EIGHTY (80) FOOT R/W AND LARGER SHALL HAVE CONCRETE COLLARS. STREET LESS THAN EIGHTY (80) FOOT R/W WILL REQUIRE RETROFIT IF PAVING DOES NOT CONFORM TO CITY STANDARDS AT THE MANHOLE
- 6 TEE SADDLES SHALL BE USED TO CONNECT SEWER LATERALS TO EXISTING MAIN LINES UP TO TWELVE INCH (12") DIAMETER CONNECTIONS TO FIFTEEN INCH (15") OR LARGER MAINS SHALL REQUIRE SPECIAL PROCEDURES. IN LINE "Y" SHALL BE USED ON LINES TWELVE INCHES (12") OR ABOVE
- 7 WATER MAINS SHALL BE PROTECTED IN ACCORDANCE WITH LVWD STANDARDS WHENEVER A SEWER MAIN CROSSES OVER A WATER MAIN OR THE SEWER IS LESS THAN EIGHTEEN INCH (18") UNDER A WATER MAIN
- 8 ALL CONTRACTORS INSTALLING SEWER MAINS THAT WILL BE UNDER THE JURISDICTION OF THE CITY OF LAS VEGAS MUST BE STATE OF NEVADA CLASS "A" CONTRACTORS
- 9 THE CITY OF LAS VEGAS WILL NOT ACCEPT ANY SEWER MAINS WHICH HAVE A VERTICAL DEFLECTION OF MORE THAN ONE TENTH (0.10) OF A FOOT FROM THE APPROVED CONSTRUCTION PLANS AT ANY LOCATION. SEWER MAINS FOUND TO EXCEED THIS TOLERANCE WILL HAVE TO BE REPAIRED OR REMOVED OR REPLACED TO THE SATISFACTION OF THE CITY ENGINEER PRIOR TO ACCEPTANCE BY THE CITY OF LAS VEGAS
- 10 INSTALLATION OF CURVED SEWER REQUIRES THE USE OF C-900 PVC PIPE WHICH ALLOWS FOR PIPE DEFLECTION AT THE JOINTS

ELSTNER ESTATE PHASE 2



BACK OF CURB DATA

CURVE	RADIUS	LENGTH	TANGENT	DELTA
C1	1151.10'	52.51'	28.26'	02°36'50"
C2	26.50'	38.22'	23.28'	82°37'38"
C3	15.00'	23.56'	15.00'	90°00'00"
C4	1.00'	1.68'	1.11'	96°08'21"
C5	3.00'	4.71'	3.00'	90°00'00"
C6	1175.60'	33.50'	16.75'	01°37'58"

SIDEWALK RAMP DATA

NO.	HR #1	8'00"	8'00"
1	4'50"	8'00"	9'50"

BENCHMARK

BENCHMARK No. 11V00 125ES, RIVET AND PLATE IN TOP OF CURB, NORTHWEST RETURN OF DECATUR BOULEVARD AND CHEYENNE AVENUE
OLD BM ELEVATION = 2215.984 FEET NAVD 1985
675 4332 METERS }
NOTE:
SUBTRACT 0.184 FEET FROM THE OLD BENCHMARK ABOVE TO CORRESPOND TO THE NEW BENCHMARK ELEVATION
NEW BM ELEVATION = 2215.800 FEET NAVD 1985
675 3767 METERS }
9937JUP

Avoid cutting underground utility lines.
Call before you Dig.
1-800-227-2600
UNDERGROUND SERVICE ALERT (USA)

Avoid hitting overhead power lines. IT'S COSTLY.
Call before you do Overhead
1-702-593-6111

PROJECTED SEWER FLOWS

AVE. DAILY	= 1,500 GAL
PEAK	= 5,100 GAL

STATE OF NEVADA
PLANNING & SURVEYING
LEONARD V. DE LUCA
REGISTERED PROFESSIONAL ENGINEER
No. 3794
R.E. NO. 3794
DATE 9/07/05

DeLUCA, INC.
ENGINEERING • PLANNING • SURVEYING
4511 W. CHEYENNE AVE., STE. 101, NORTH LAS VEGAS, NV 89032, (702) 255-6242

PETERSON BROTHERS EQUIPMENT LIMITED PARTNERSHIP
PETERSON PLAZA
UTILITY PLAN & MISC. UTILITY NOTES

SHEET CONTENTS:
SHEET 3 OF 6 SHEETS