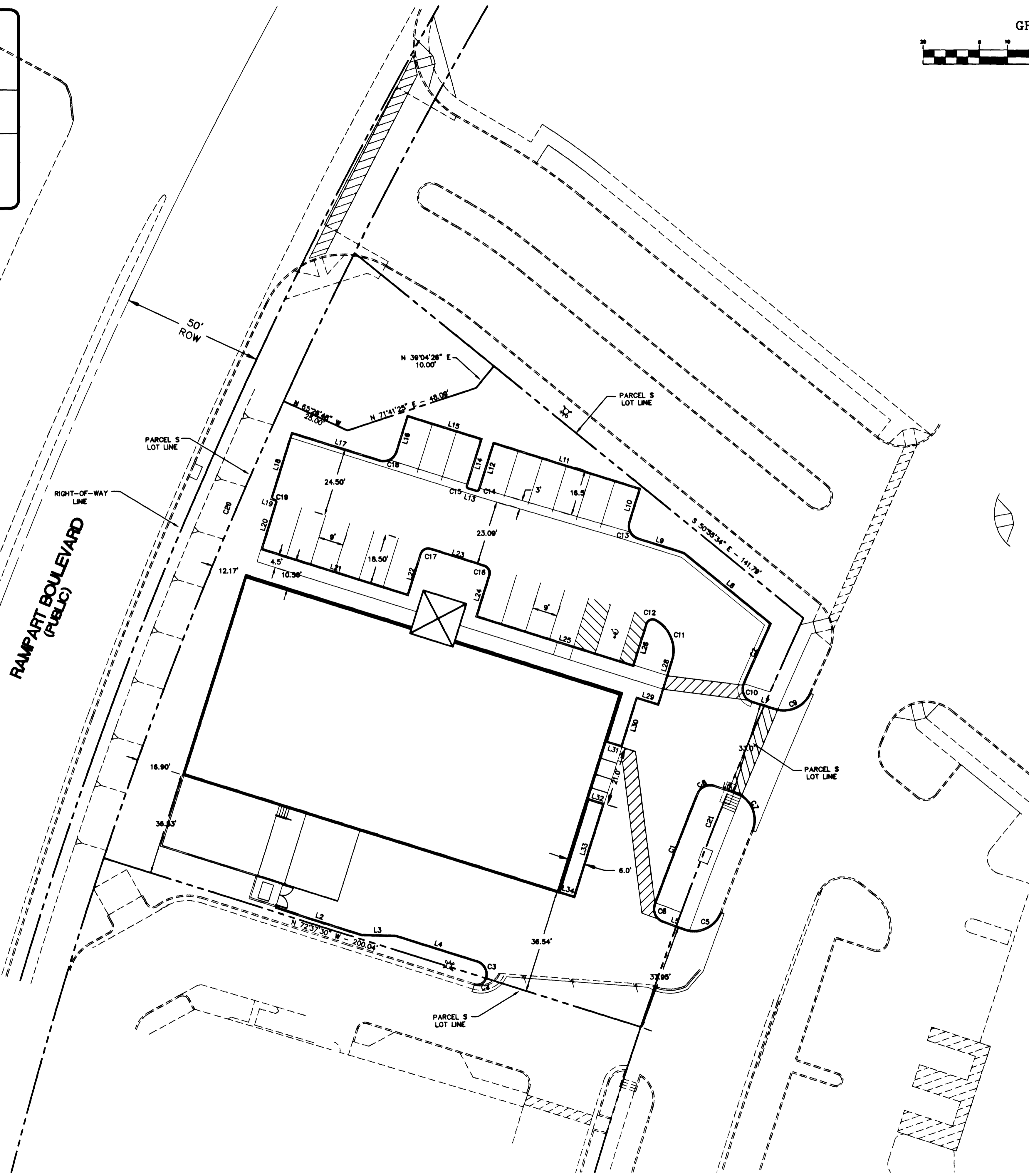
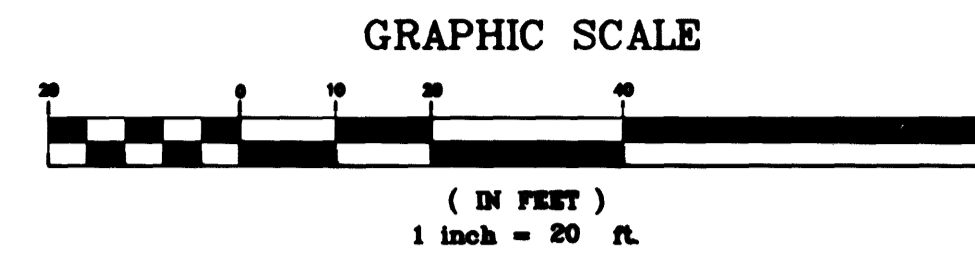


VICINITY MAP
NTS



IN LOCATIONS WHERE CURB IS CONSTRUCTED,
ALL DIMENSIONS ARE TO BACK OF CURB.

CURVE	LENGTH	RADIUS	DELTA	TANGENT
C1	42.25	1444.50	01°40'33"	21.12
C2	23.50	1444.50	00°55'56"	11.75
C3	7.07	4.50	90°00'00"	4.50
C4	4.71	3.00	90°00'00"	3.00
C5	15.63	10.00	89°34'48"	9.93
C6	7.08	4.50	90°11'56"	4.58
C7	16.48	10.00	94°23'24"	10.80
C8	6.71	4.50	85°24'25"	4.13
C9	14.57	10.00	83°28'18"	8.98
C10	7.56	4.50	96°16'18"	5.08
C11	16.43	12.00	78°27'47"	9.80
C12	3.54	2.00	101°38'13"	2.43
C13	7.07	4.50	90°00'00"	4.50
C14	0.79	0.50	90°00'00"	0.50
C15	0.79	0.50	90°00'00"	0.50
C16	3.93	2.50	89°59'46"	2.50
C17	3.93	2.50	90°00'00"	2.50
C18	7.07	4.50	90°00'00"	4.50
C19	0.79	0.50	90°00'00"	0.50
C20	174.19	1635.00	06°06'18"	87.18
C21	155.97	1435.00	06°13'39"	78.06

IN LOCATIONS WHERE CURB IS CONSTRUCTED,
ALL DIMENSIONS ARE TO BACK OF CURB.

LINE	LENGTH	BEARING
L2	32.31	N72°37'30"W
L3	12.04	N88°27'51"W
L4	30.15	N72°37'30"W
L5	8.03	N62°54'20"W
L6	7.59	S72°38'02"E
L7	6.67	S72°38'02"E
L8	39.96	S50°53'24"E
L9	17.06	S72°37'48"E
L10	12.50	S17°22'12"W
L11	55.00	S72°37'48"E
L12	17.50	S17°22'12"W
L13	3.00	S72°37'48"E
L14	17.50	S17°22'12"W
L15	28.00	N72°37'48"W
L16	13.50	S17°22'12"W
L17	32.91	N72°37'48"W
L18	25.00	S17°22'30"W
L19	1.57	N72°37'48"W
L20	17.50	S17°22'12"W
L21	55.00	S72°37'48"E
L22	15.50	S17°22'12"W
L23	20.00	N72°37'48"W
L24	15.50	S17°21'58"W
L25	59.00	N72°37'48"W
L26	15.80	S17°21'58"W
L27	3.00	S72°38'02"E
L28	16.00	S17°21'58"W
L29	8.00	N72°37'48"W
L30	18.00	S17°22'12"W
L31	5.00	N72°37'48"W
L32	5.00	N72°37'48"W
L33	34.00	S17°22'12"W
L34	5.00	N72°37'48"W

HORIZONTAL CONTROL PLAN					
MILTON HOMER FURNITURE SHOWROOM BOCA PARK SHOPPING CENTER					
PAD S					
TITLE					
FILE NAME: HC-1881					
PROJECT NO: 188.1					
DRAWN BY: 1/4/01					
DESIGNED BY: 1/4/01					
CHECKED BY: 1/4/01					
PROJECT NO: 188.1					
SCALE HORIZONTAL: 1" = 20' VERTICAL: NA					
SHEET CZ 2 OF 5 SHEETS					
PROJECT NO: 107-V3383					
MELVIN GREEN ARCHITECT, LTD. 3301 SPRING MOUNTAIN ROAD, SUITE 2 LAS VEGAS, NEVADA 89102 (702) 362-8674 3514 E. TROPICANA, SUITE 2 LAS VEGAS, NV, 89121 PH: (702) 597-2988 FAX: (702) 597-0309 CONSULTING ENGINEERS, INC.					