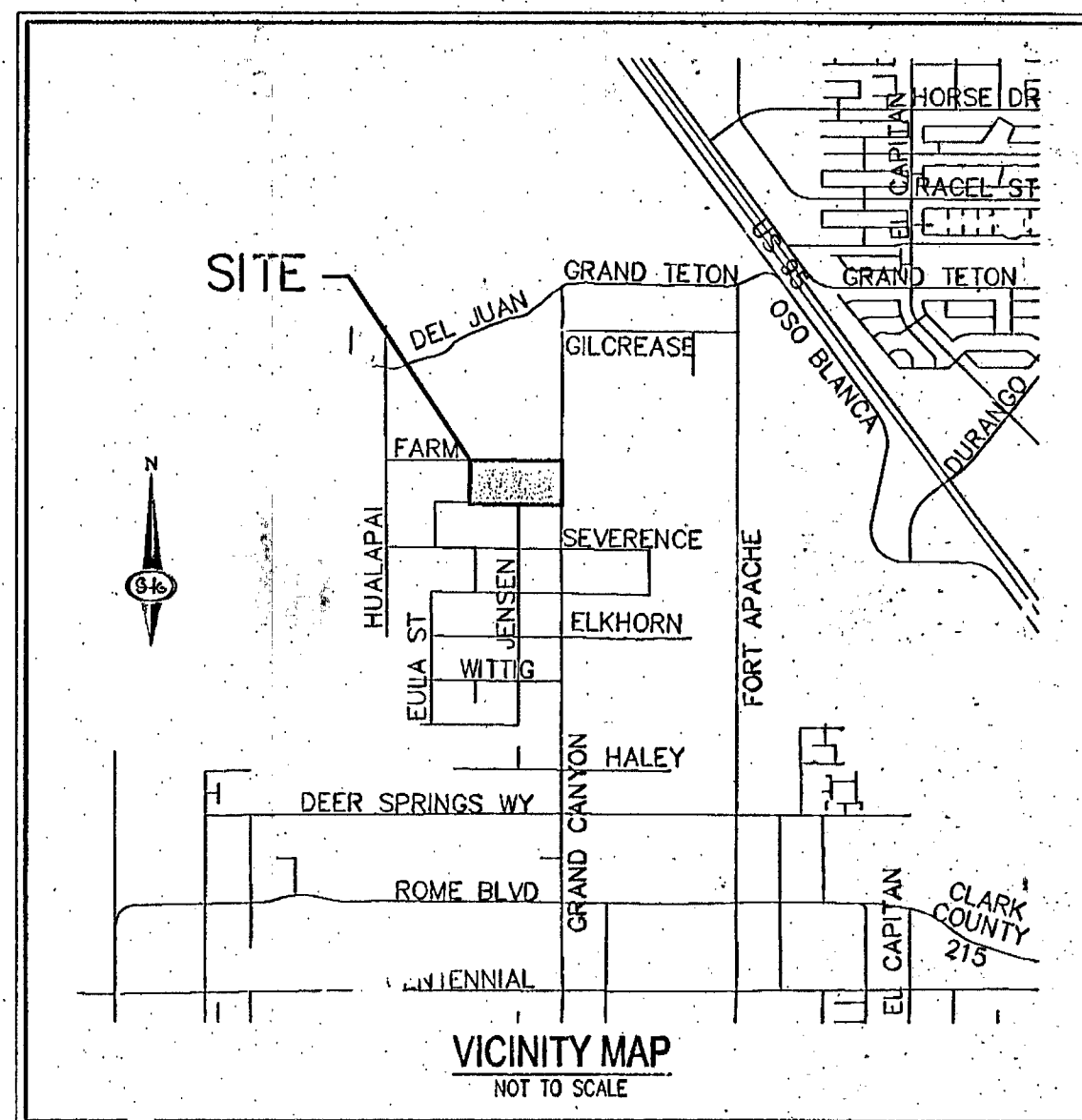
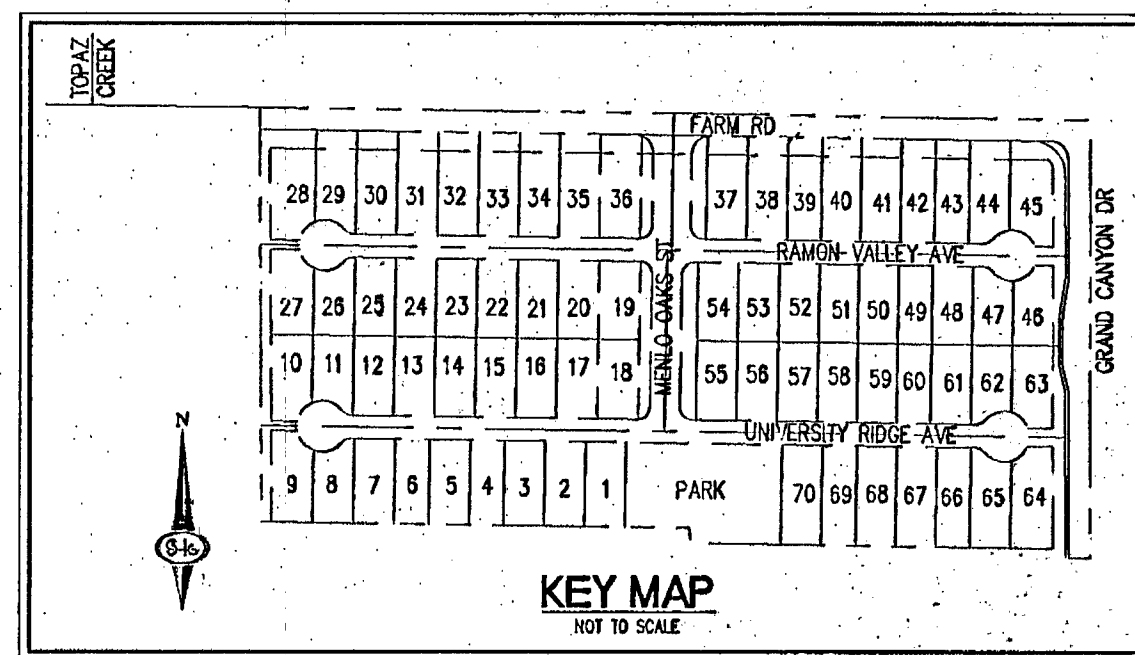


# LENNAR®

## IMPROVEMENT PLANS FOR NORTH CREEK

APN: A PORTION OF 125-18-301-025



DRY UTILITY SUPPLEMENTAL INDEX	
1	SHEET 1
2	SHEET 2
3	SHEET 3
4	SHEET 4
5	SHEET 5
6	SHEET 6

NO.	SHEET	SHEET TITLE
1	C-1	COVER SHEET
2	C-2	GENERAL NOTES & QUANTITIES
3	G-1	GRADING PLAN I
4	G-2	GRADING PLAN II
5	D-1	GRADING DETAILS AND SECTIONS I
6	D-2	GRADING DETAILS AND SECTIONS II
7	D-3	GRADING DETAILS AND SECTIONS III
8	PP-1	PLAN AND PROFILE - FARM ROAD
9	PP-2	PLAN AND PROFILE - FARM ROAD
10	PP-3	PLAN AND PROFILE - FARM ROAD
11	PP-4	PLAN AND PROFILE - GRAND CANYON DRIVE
12	PP-5	PLAN AND PROFILE - STORM DRAIN
13	PP-6	PLAN AND PROFILE - DRAINAGE CHANNEL
14	PP-7	PLAN AND PROFILE - MENDO OAKS STREET
15	PP-8	PLAN AND PROFILE - RAMON VALLEY AVE
16	PP-9	PLAN AND PROFILE - RAMON VALLEY AVE
17	PP-10	PLAN AND PROFILE - UNIVERSITY RIDGE AVE
18	PP-11	PLAN AND PROFILE - UNIVERSITY RIDGE AVE
19	MU	MASTER UTILITY PLAN
20	U-1	UTILITY PLAN I
21	U-2	UTILITY PLAN II
22	T-1	TRAFFIC PLAN I
23	T-2	TRAFFIC PLAN II
24	L1.00	LANDSCAPE COVER SHEET
25	L1.01	LANDSCAPE PLANTING PLAN
26	L1.02	LANDSCAPE COVER SHEET
27	L1.03	LANDSCAPE COVER SHEET
28	L1.04	LANDSCAPE COVER SHEET
29	L1.05	LANDSCAPE COVER SHEET
30	L4.01	LANDSCAPE DETAILS

### APPROVALS

**DAVID BOWERS PE, PTOE #16738** DATE: 4/2/14  
 APPROVAL OF THESE PLANS BY THE CITY ENGINEER IS LIMITED TO THOSE IMPROVEMENTS CONSTRUCTED IN THE DEDICATED-OF-WAY, AND/OR DEDICATED EASEMENTS. THIS APPROVAL DOES NOT AUTHORIZE CONSTRUCTION OF ANY IMPROVEMENTS THAT DEVIATE FROM ADOPTED STANDARDS AND/OR SPECIFICATIONS EXCEPT THOSE SPECIALLY LISTED UNDER DEVIATIONS FROM STANDARDS. THE ENGINEER SHALL RESOLVE ANY DEVIATION OTHER THAN THOSE LISTED IN DEVIATIONS FROM STANDARDS IN FAVOR OF THE UNIFORM STANDARD DRAWINGS AND SPECIFICATIONS, CLARK COUNTY AREA, NEVADA.

**CHRIS KNIGHT, DIRECTOR** DATE: 3/5/14  
 BUILDING AND SAFETY DEPARTMENT  
 THIS PLAN MEETS THE APPLICABLE STANDARDS OF THE PLANNING AND DEVELOPMENT DEPARTMENT.

**MICHELL R. TURNER**  
**Michelle R. Turner** DATE: 1-22-14  
 GENERAL MANAGER CENTRAL TELEPHONE CO. dba CENTURYLINK  
 THE AFFIXED EMBROIDERED APPROVAL DOES NOT ASSUME OR GUARANTEE LIABILITY FOR ANY WORK OR UNWORKING CONFLICTS WITH EXISTING OR PROPOSED IMPROVEMENTS. RESOLUTION OF ANY CONFLICT WILL BE ACCOMPLISHED PURSUANT TO LOCAL ORDINANCES, NEVADA REVISED STATUTES AND / OR PUBLIC UTILITY COMMISSION RULES AND REGULATIONS.

**H. DISHAR FOR DOA HEADE** DATE: 3/12/14  
 LAS VEGAS VALLEY WATER DISTRICT ENGINEERING SERVICES MANAGER  
 PROJECT NO. 121449  
 LIVING APPROVED FIRE FLOW 750 GPM AT 20 PSI RESIDUAL  
 SHEETS: C-1, C-2, D-2, PP-1 THRU PP-11, MU, U-1 & U-2 (PP-6 NOT RECD)  
 APPROVAL BY THE FIRE DEPARTMENT HAVING JURISDICTION IS REQUIRED PRIOR TO OBTAINING FINAL APPROVAL FROM LAS VEGAS VALLEY WATER DISTRICT.

**NV ENERGY** DATE: 01-22-2014  
 NV ENERGY ACKNOWLEDGES THAT WE HAVE RECEIVED YOUR PLANS AND WILL PROVIDE SERVICE TO ALL ELECTRICAL NEEDS ASSOCIATED WITH THIS PROJECT. NV ENERGY RESERVES THE RIGHT TO ADDRESS ANY EXISTING OR FUTURE CONFLICTS ONCE THE FINAL DESIGN IS COMPLETED. THE NEW SERVICE AND THE RESOLUTION OF ANY CONFLICTS WILL BE ACCOMPLISHED PURSUANT TO THE NEVADA PUBLIC UTILITY COMMISSION'S RULES AND REGULATIONS.

**Maggie Mann** DATE: 2-6-14  
 SOUTHWEST GAS

**Kim White** DATE: 1/22/13  
 KIM WHITE  
 COX COMMUNICATIONS LAS VEGAS, INC.

### PROJECT INFORMATION

ZONING: R-PD4  
 ACREAGE: 19.94 AC (GROSS)  
 18.10 AC (NET)  
 No. OF LOTS: 70  
 No. OF COMMON LOTS: 5  
 LOCATION: CITY OF LAS VEGAS, NV  
 A PORTION OF APN 125-18-301-025

### OWNER

LENNAR COMMUNITIES NEVADA  
 2490 PASEO VERDE PARKWAY, SUITE 120  
 HENDERSON, NV 89074  
 PH (702) 458-7700

### DEVELOPER

LENNAR COMMUNITIES NEVADA  
 2490 PASEO VERDE PARKWAY, SUITE 120  
 HENDERSON, NV 89074  
 PH (702) 458-7700

### ENGINEER

SLATER HANFAN GROUP  
 5740 S. ARVILLE ST. SUITE 216  
 LAS VEGAS, NV 89118  
 PH (702) 284-5300  
 FX (702) 284-5399

### BENCHMARK

CITY OF LAS VEGAS BENCHMARK STATION: 6LV9018C4  
 BEING A CONEY AND PLATE IN THE TOP OF CURB AT SOUTHEAST CORNER OF GRAND CANYON DR. AND FARM RD.  
 ELEVATION: 2768.35 US SURVEY FEET (NAVD88)  
 843.188 METERS

### BASIS OF BEARING

THE BASIS OF BEARINGS FOR THIS SURVEY IS BASED ON THE FOUND AND HELD MONUMENTS MARKING THE SOUTHERLY LINE OF THE SOUTHWEST QUARTER (SW1/4) OF THE SOUTHEAST QUARTER (SE1/4) OF SECTION 13, T10S, R09E, M24E, CLARK COUNTY, NEVADA PER RECORD OF SURVEY BOOK 123, PAGE 32, CLARK COUNTY RECORDER'S OFFICE AS SOUTH 88°48'48" EAST.

### NOTE

ALL LAND SURFACE AREA DISTURBANCES OVER 1 ACRE REQUIRE A STORMWATER DISCHARGE PERMIT ISSUED BY THE NEVADA DIVISION OF ENVIRONMENTAL PROTECTION (NDEP). A PHASED CONSTRUCTION UNIT OR A CONTIGUOUS SUBDIVISION IS CONSIDERED UNDER CONSTRUCTION UNTIL ALL STRIPPED SURFACE AREAS HAVE BEEN COVERED BY PAVING, BUILDING CONSTRUCTION OR PLANTING. A STORMWATER DISCHARGE PERMIT APPLICATION AND ASSOCIATED INFORMATION MAY BE DOWNLOADED FROM THE WEBSITE: [HTTP://WWW.STATE.NV.US/DWPC/STORMWATER.HTM](http://www.state.nv.us/dwpc/stormwater.htm) PROJECTS THAT DISTURB MORE THAN ONE ACRE OF LAND MUST SUBMIT TO NDEP A "NOTICE OF INTENT" FOR INCLUSION UNDER STORMWATER PERMIT NO. NV100000 ALONG WITH THE APPROPRIATE FILING FEE.

### CALL BEFORE YOU DO OVERHEAD

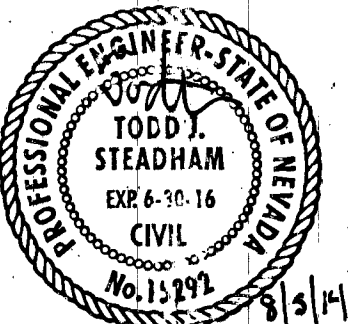
AVOID HITTING OVERHEAD POWER LINES. IT'S COSTLY.  
 CALL BEFORE YOU DO UNDERGROUND  
 1-702-227-2929

### CALL BEFORE YOU DO UNDERGROUND

AVOID HITTING UNDERGROUND TRAFFIC SIGNAL SYSTEMS AND STREET LIGHT SYSTEM CONDUITS. IT'S COSTLY.  
 CALL BEFORE YOU DO UNDERGROUND  
 1-702-455-7511  
 CLARK COUNTY TRAFFIC OPERATIONS AND 1-702-432-5300  
 LAS VEGAS AREA COMPUTERIZED TRAFFIC SYSTEM

### CALL BEFORE YOU DIG

AVOID CUTTING UNDERGROUND UTILITY LINES. IT'S COSTLY.  
 Call 811  
 OR 1-800-227-2600  
 AND CLARK COUNTY TRAFFIC OPERATIONS 1-702-455-7544



### SLATER HANFAN GROUP CONSULTING ENGINEERS & PLANNERS

5740 S. ARVILLE STREET #216, LAS VEGAS, NV 89118  
 PHONE (702) 284-5300 FAX (702) 284-5399

DATE	BY	APP. DATE	DESCRIPTION
01/20/14 <td>KS <td></td> <td>DRAWER: KS</td> </td>	KS <td></td> <td>DRAWER: KS</td>		DRAWER: KS
	KS <td></td> <td>DESIGNER: KS</td>		DESIGNER: KS
	STS <td></td> <td>CHECKED: STS</td>		CHECKED: STS
			PROJECT NO. LEN1308-001
			SHEET 1 OF 30

1074993