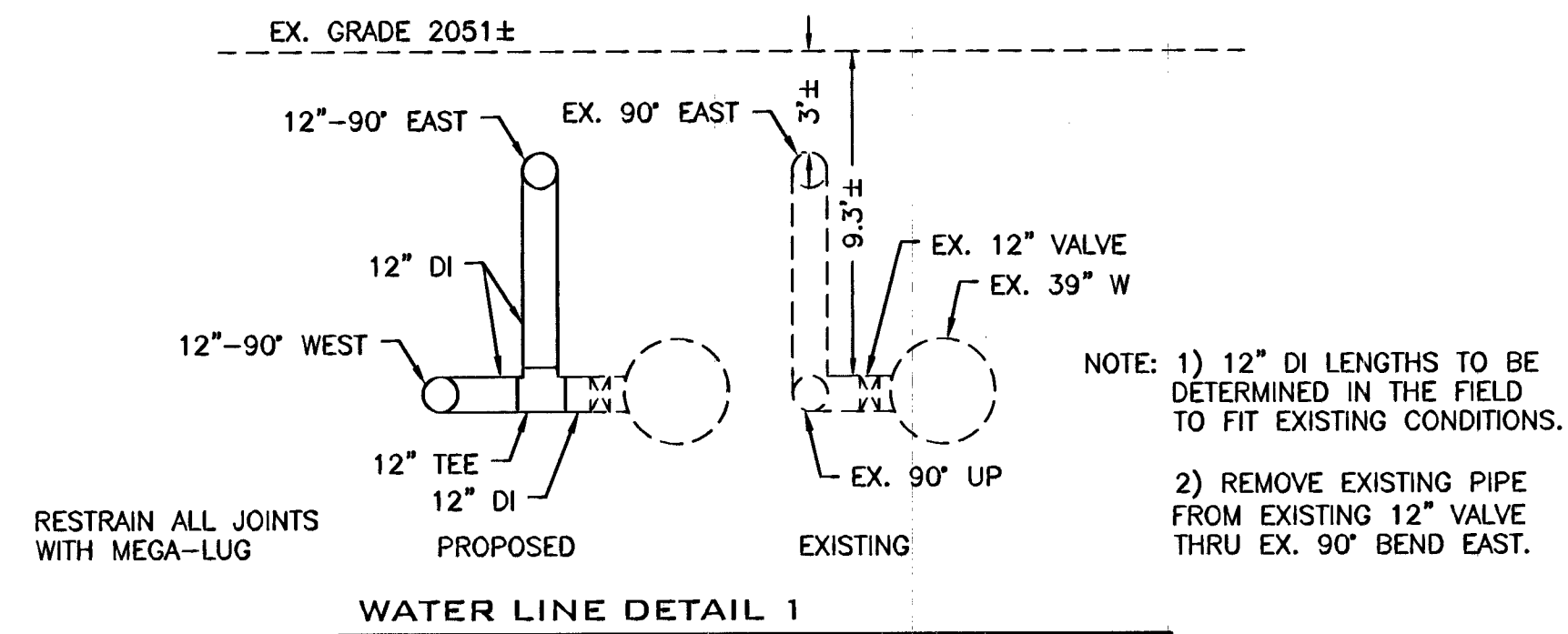
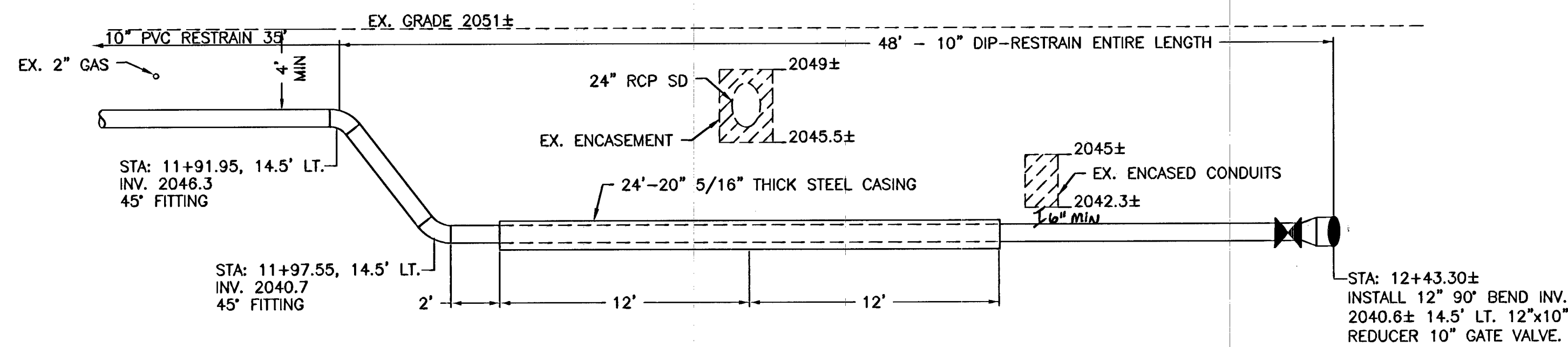


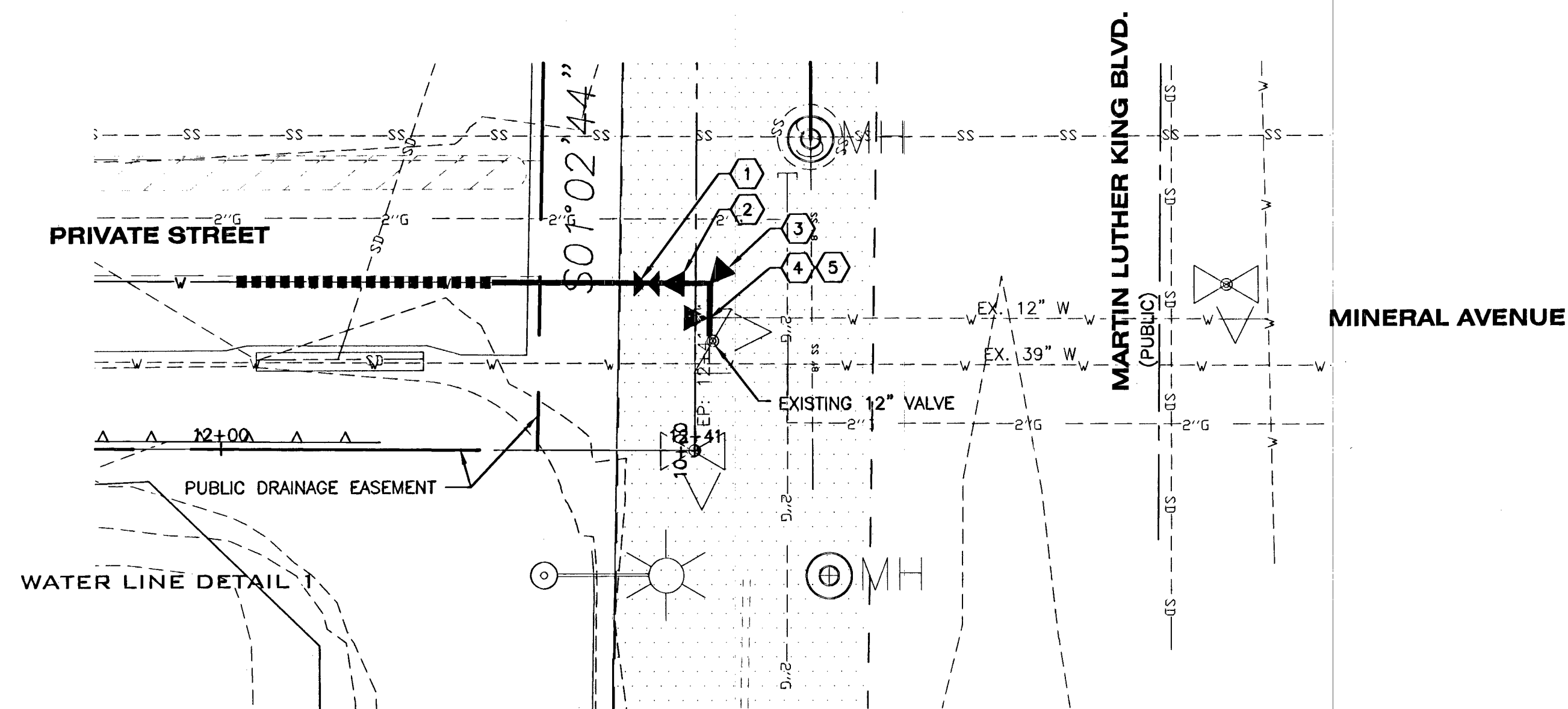
SECTION 28, T. 20 S., R. 61 E., M.D.M.



WATER LINE DETAIL 1



WATER LINE DETAIL 2



WATER LINE DETAIL 3
SCALE 1"=10'

NOTE: 1) 12" DI LENGTHS TO BE DETERMINED IN THE FIELD TO FIT EXISTING CONDITIONS.
2) REMOVE EXISTING PIPE FROM EXISTING 12" VALVE THRU EX. 90° BEND EAST.

- CONSTRUCTION NOTES**
- 1) INSTALL 10" VALVE WITH ANCHOR BLOCK PER UDACS PLATE #30.
 - 2) INSTALL 12" x 10" REDUCER WITH ANCHOR BLOCK PER UDACS PLATE #30
 - 3) INSTALL 90° BEND, WITH THRUST BLOCK PER UDACS PLATE #31.
 - 4) INSTALL 12" TEE (LOWER), WITH THRUST BLOCK PER UDACS PLATE #31.
 - 5) INSTALL 12" 90° BEND (UPPER), WITH THRUST BLOCK PER UDACS PLATE #31.

Call before you dig
1-800-227-2600
1-702-455-7544

Call before you dig
UnderGround
1-702-455-7511
1-702-229-8811

CALL BEFORE YOU DIG
OVERHEAD

NO.	DATE	BY	REVISIONS
1	6/12/14	SMM	ADDED SHEET, WATERLINE CHANGE
2			
3			
4			
5			

IWCE
MADISON DEVELOPMENT GROUP, LLC
WHIPPLE CONSULTING ENGINEERS
2828 NORTH SULLIVAN ROAD
SPokane Valley, WA 99033
PHONE: 425-889-6500

MATTRESS FIRM
WATER PLAN
80 S. MARTIN LUTHER KING BLVD.
LAS VEGAS, NEVADA

PROFESSIONAL ENGINEER STATE OF NEVADA
RAYMOND D. KIMBALL
Exp. 8/30/15
CIVIL
No. 22176

SCALE:
HORIZONTAL:
1" = 20'
VERTICAL:
1" = 4'

PROJ #: 13-1112
DATE: 04/04/14
DRAWN: SMM
REVIEWED: TRW

SHEET
C6.0A
9A OF 14
CLV DWG NUMBER
107V6237

COUNTY DATUM
CITY OF LAS VEGAS BENCHMARK NO. 7LV0128SSW6 BEING A RIVET & PLATE IN TOP OF CURB AT THE NORTHWEST CORNER OF SHADOW LANE & MESQUITE AVENUE.
ELEVATION: 2057.65 FEET OR 627.174 METERS, NAVD 88.

L. Disperi, P.E., S.M.
LAS VEGAS VALLEY WATER DISTRICT ENGINEERING SERVICES MANAGER
DATE: 7/10/14 PROJECT NO. 122487
LWWD APPROVED FIRE FLOW 1500 GPM AT 20 PSI RESIDUAL SHEETS C6.0, C6.2, C6.0, C6.0A

#5288