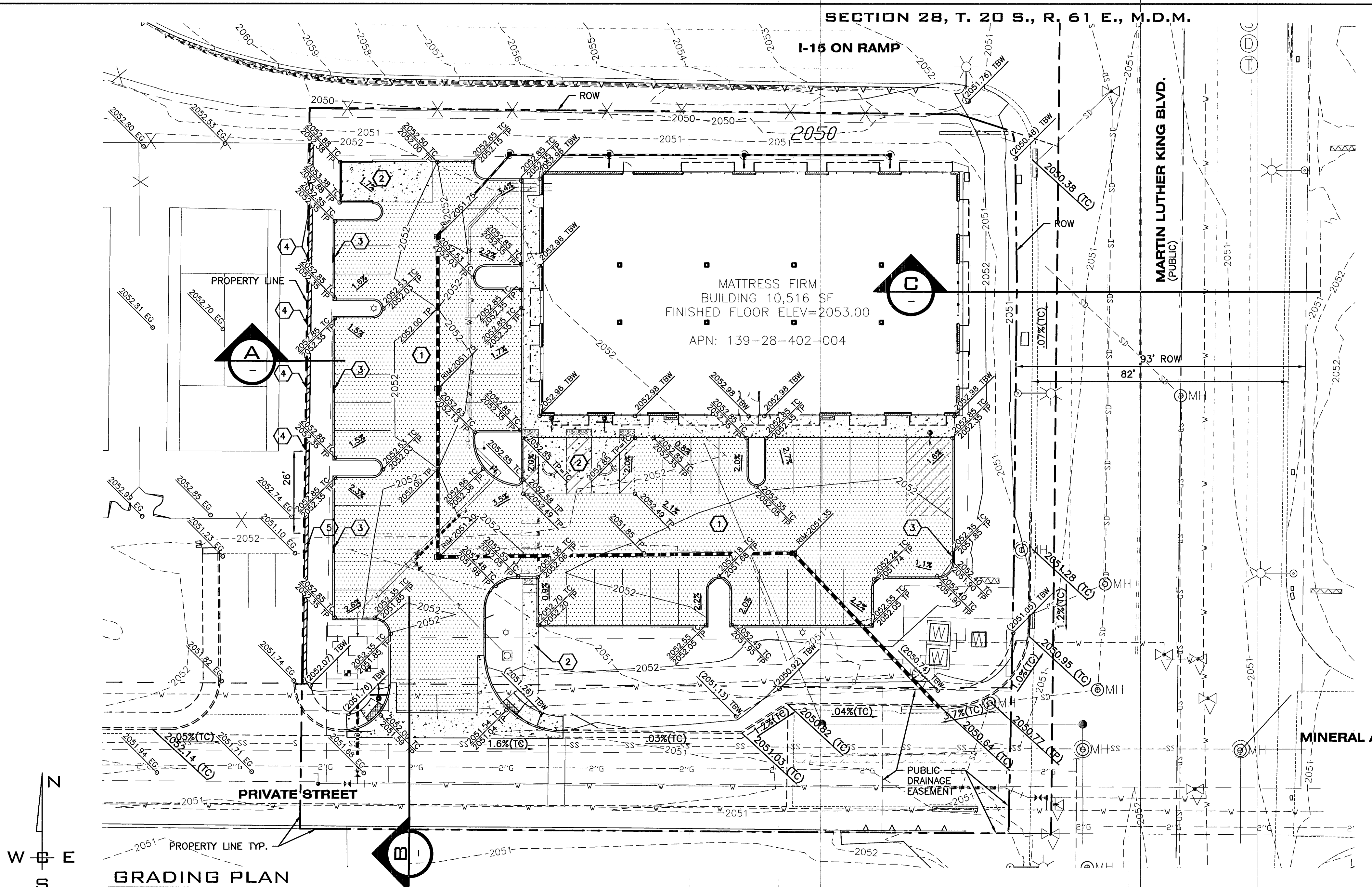


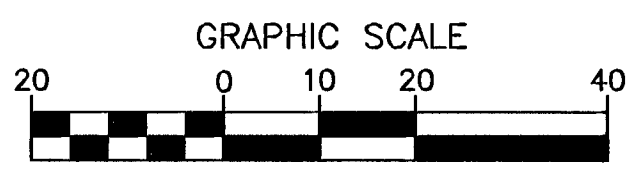
SECTION 28, T. 20 S., R. 61 E., M.D.M.

I-15 ON RAMP



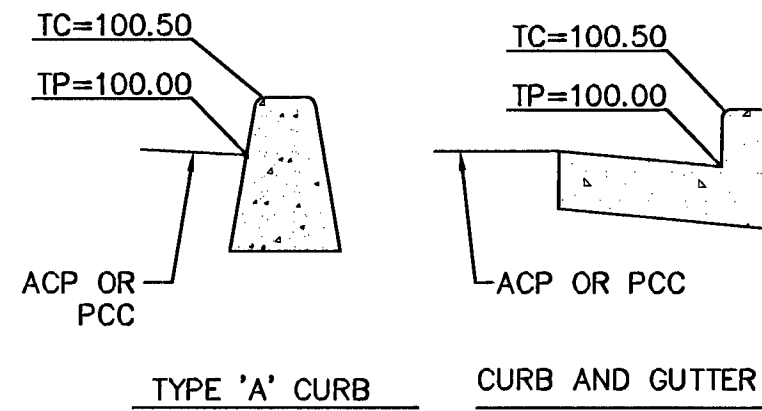
GRADING PLAN

SCALE: 1"=20'



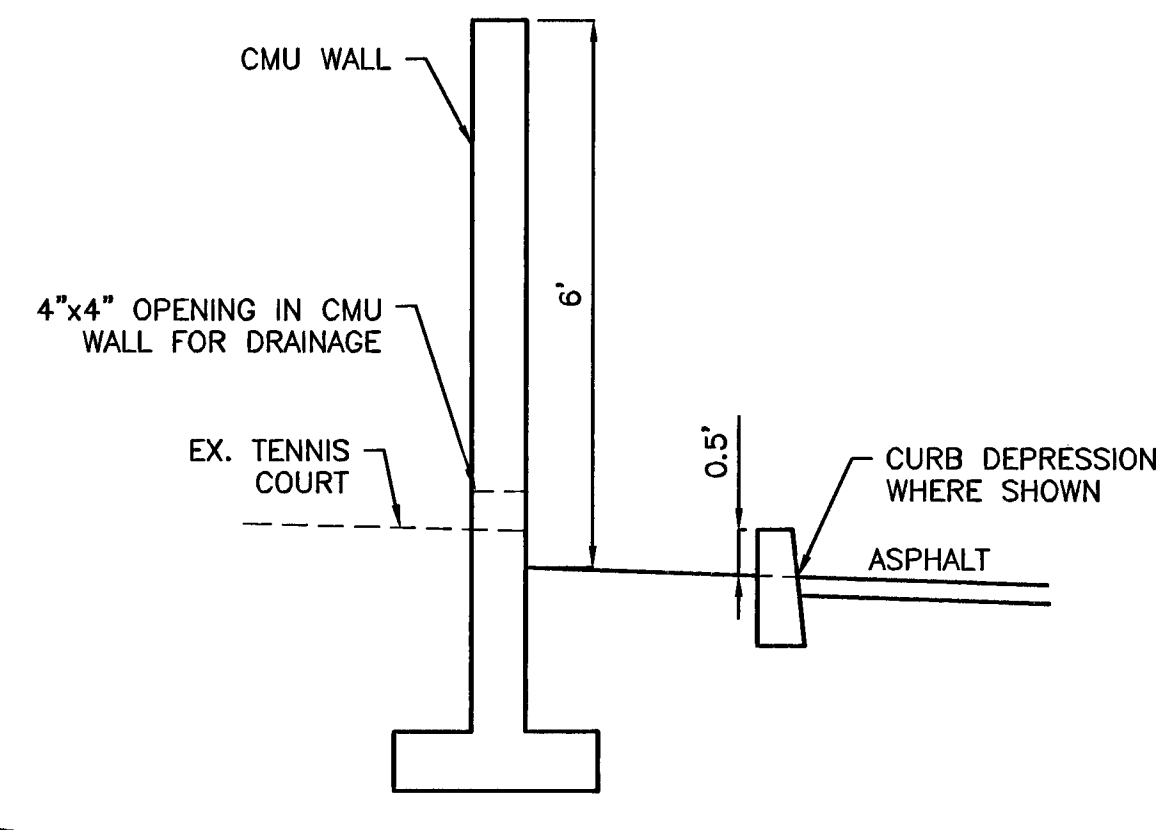
(IN FEET)
1 inch = 20 ft.

NOTE:
IF TP ELEVATION
IS SHOWN NEXT
TO CURB THEN
TC=TP+.50'



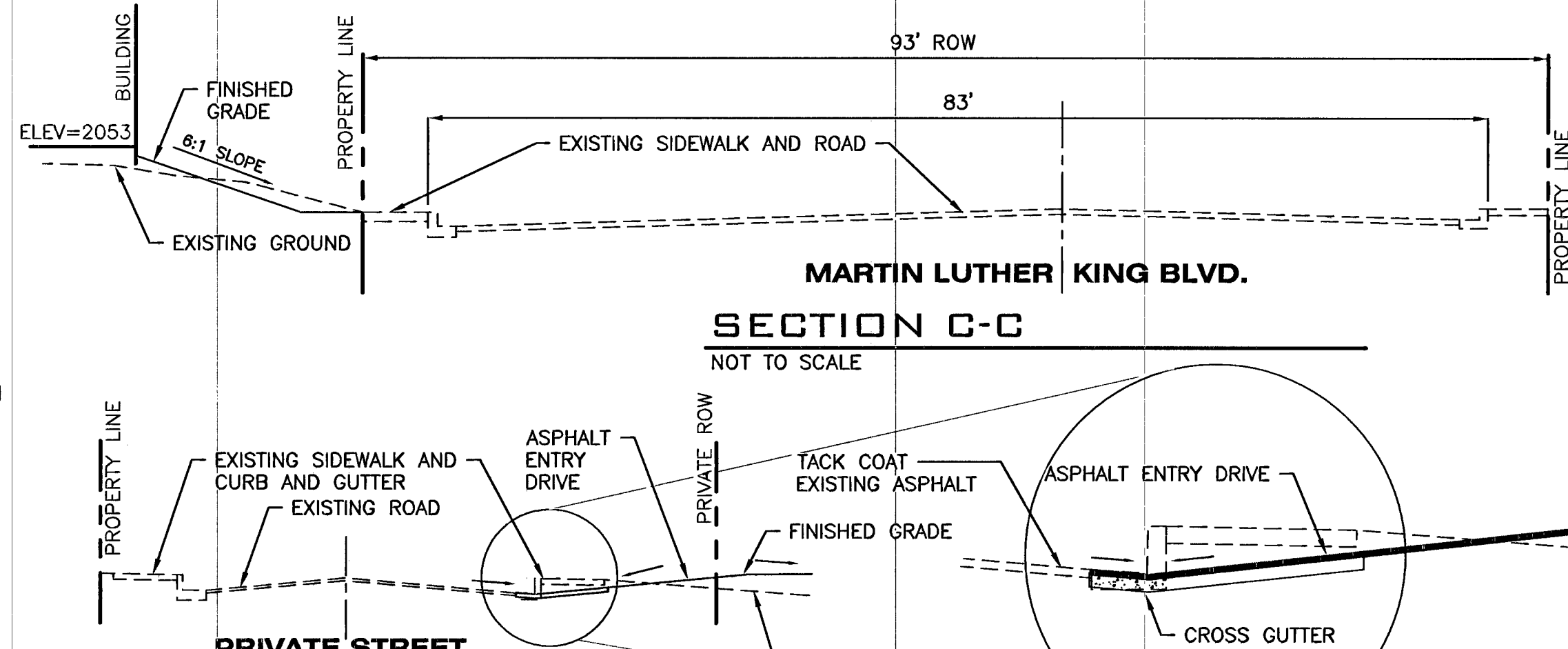
SPOT ELEVATION DETAIL 1

NOT TO SCALE



SECTION A-A

NOT TO SCALE



SECTION B-B

NOT TO SCALE

CONSTRUCTION NOTES

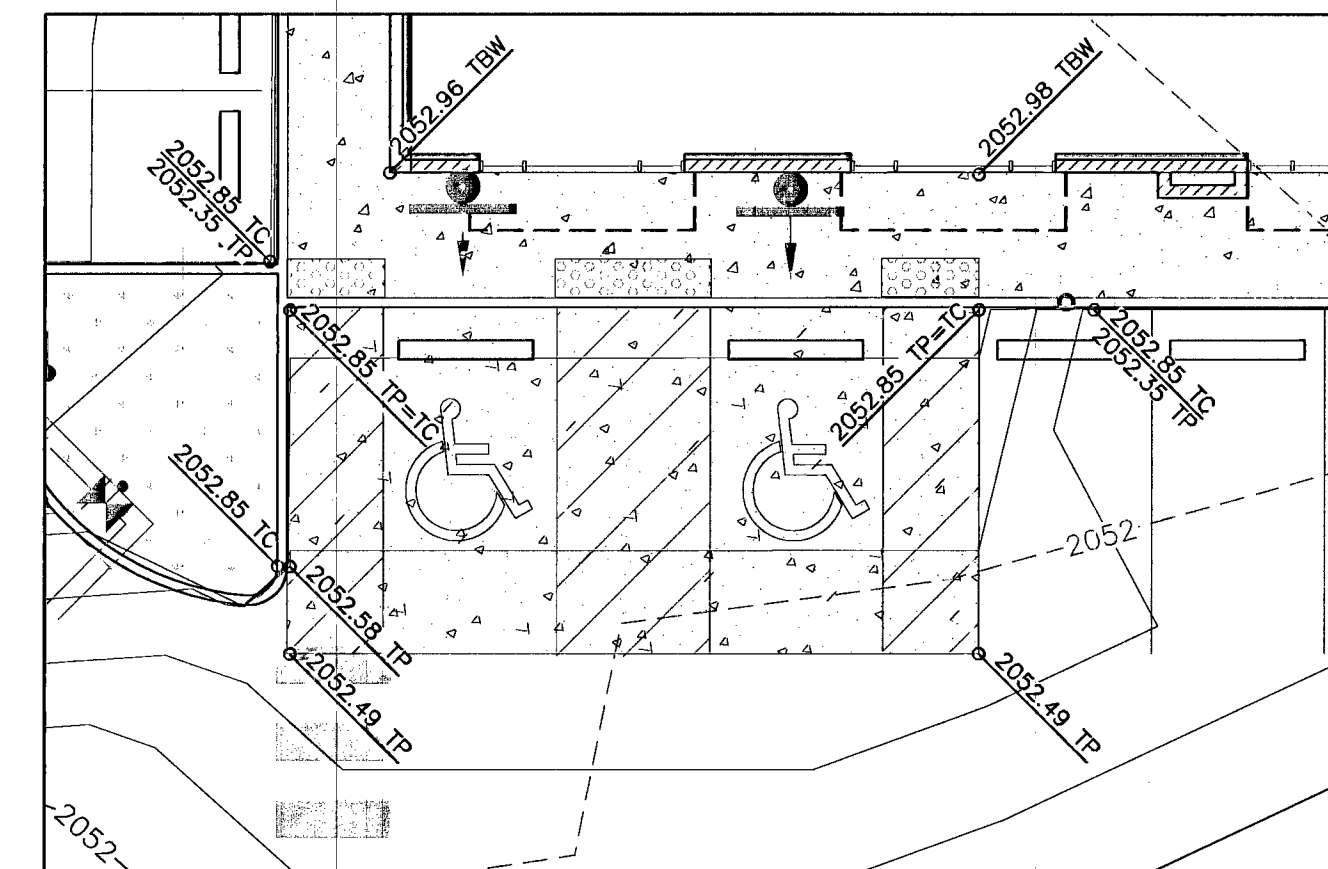
- 1 PROVIDE AND INSTALL ASPHALT PAVEMENT SECTION PER DETAIL 1, SHEET C3.1.
- 2 PROVIDE AND INSTALL CONCRETE PAVEMENT SECTION PER DETAIL 1, SHEET C3.1.
- 3 CURB DEPRESSION PER DETAIL 1, SHEET C3.0.
- 4 PROVIDE 4"x4" OPENING IN CMU WALL AT ELEVATION OF EXISTING OFFSITE TENNIS COURT AT 20 FOOT INTERVALS, (5 PLACES).
- 5 PROVIDE 4"x4" OPENING IN CMU WALL AT ELEVATION OF EXISTING OFFSITE ASPHALT.

CONTRACTOR SHALL BECOME FAMILIAR WITH AND PERFORM EARTHWORK IN ACCORDANCE WITH RECOMMENDATIONS OUTLINED IN SECTION 6.5, EARTHWORK, OF THE GEOTECHNICAL EXPLORATION REPORT BY NOVA GEOTECHNICAL AND INSPECTION SERVICES DATED SEPTEMBER 20, 2013.

Call Before you Dig
1-800-227-2600
1-702-455-7511

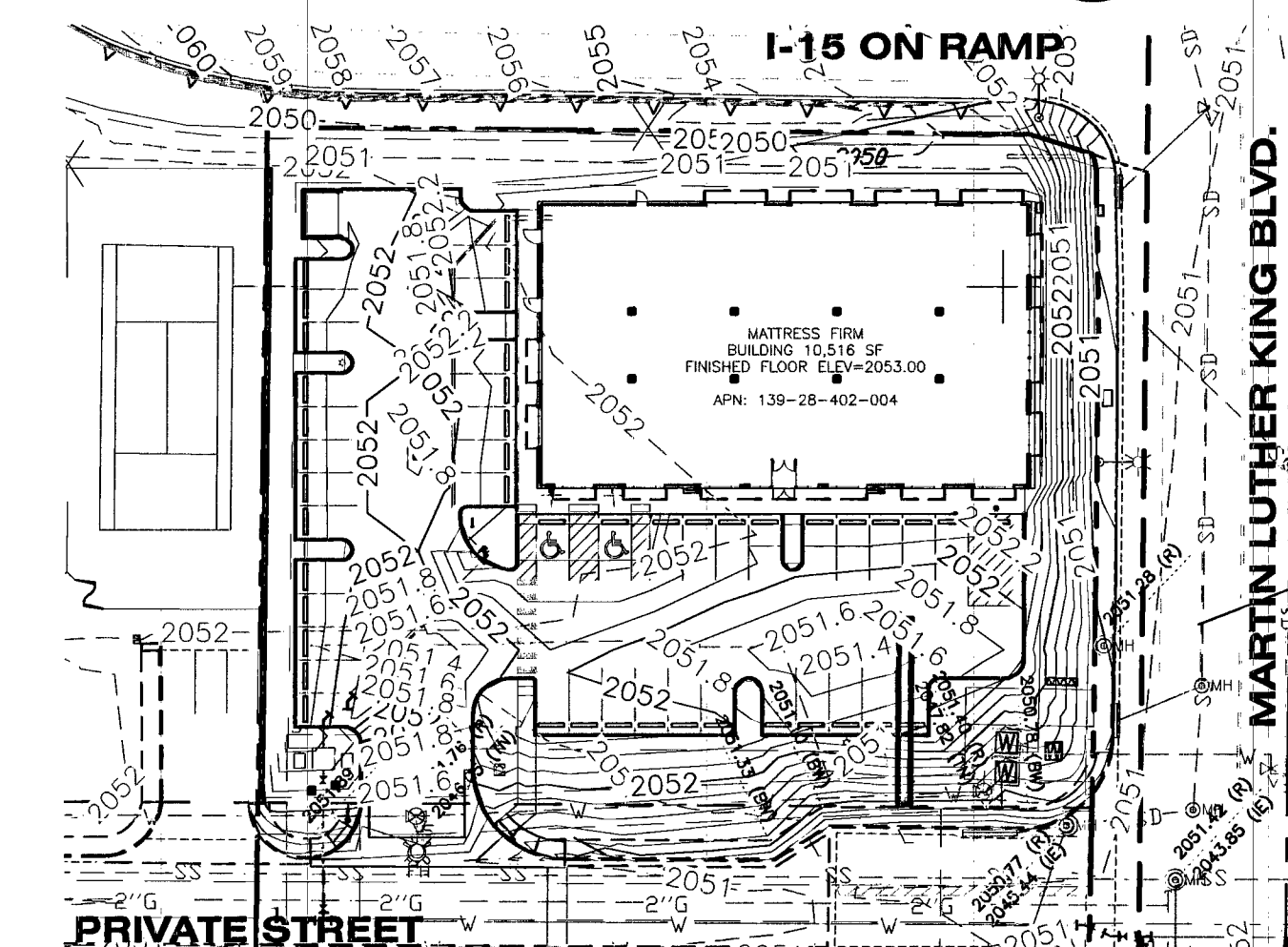
Call Before you Dig
Underground
1-702-455-7511
1-702-229-6811

CALL BEFORE YOU DIG
OVERHEAD
1-702-593-6111



HANDICAP PARKING

NOT TO SCALE

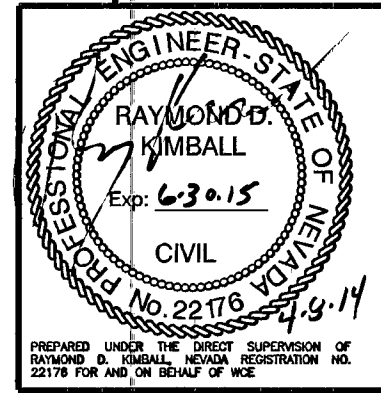


0.2' CONTOURS - FOR REFERENCE ONLY

SCALE: 1"=50'

FOR FULL LEGEND SEE SHEET C0.0

- PROPERTY LINE
- [Pattern] LIMITS OF PROPOSED ASPHALT PAVEMENT
- [Pattern] LIMITS OF PROPOSED CONCRETE
- 1977.10 TP PROPOSED SPOT ELEVATION
- (1977.10) TP EXISTING SPOT ELEVATION
- PROPOSED STORM LINE
- PROPOSED STORM STRUCTURE



SCALE:
HORIZONTAL:
1"=20'
VERTICAL:
N/A

PROJ #: 13-1112
DATE: 04/04/14
DRAWN: SMM
REVIEWED: TRW

SHEET
C4.0
8 OF 14

CLV DWG NUMBER
107N6237

COUNTY DATUM
CITY OF LAS VEGAS BENCHMARK NO. 7LV0128SSW6 BEING A RIVET & PLATE IN TOP OF CURB AT THE NORTHWEST CORNER OF SHADOW LANE & MESQUITE AVENUE.
ELEVATION: 2057.65 FEET OR 627.174 METERS, NAVD 88.

WCE
MADISON DEVELOPMENT GROUP, LLC
165 ONE NORTHUP
KIPKAND WA 98033
PHONE: 425-888-8600

WARRIE E. CONSULTING ENGINEERS
2528 NORTH SULLIVAN ROAD
SPOKANE VALLEY, WA 99216
PH: 509-893-2817 FAX: 509-826-0227

MATTRESS FIRM GRADING PLAN
80 S. MARTIN LUTHER KING BLVD.
LAS VEGAS, NEVADA

NO.	DATE	BY

H#52288