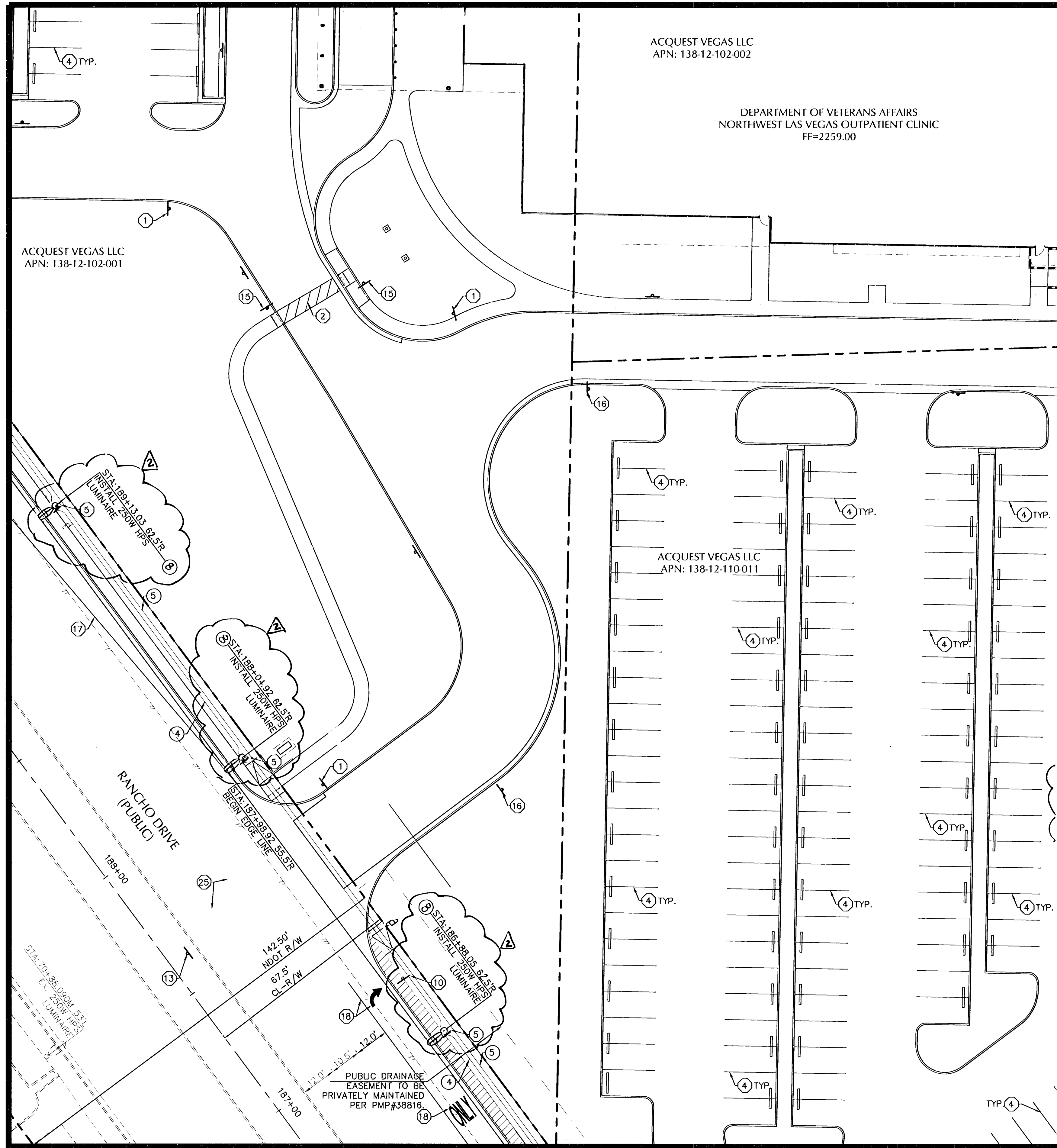
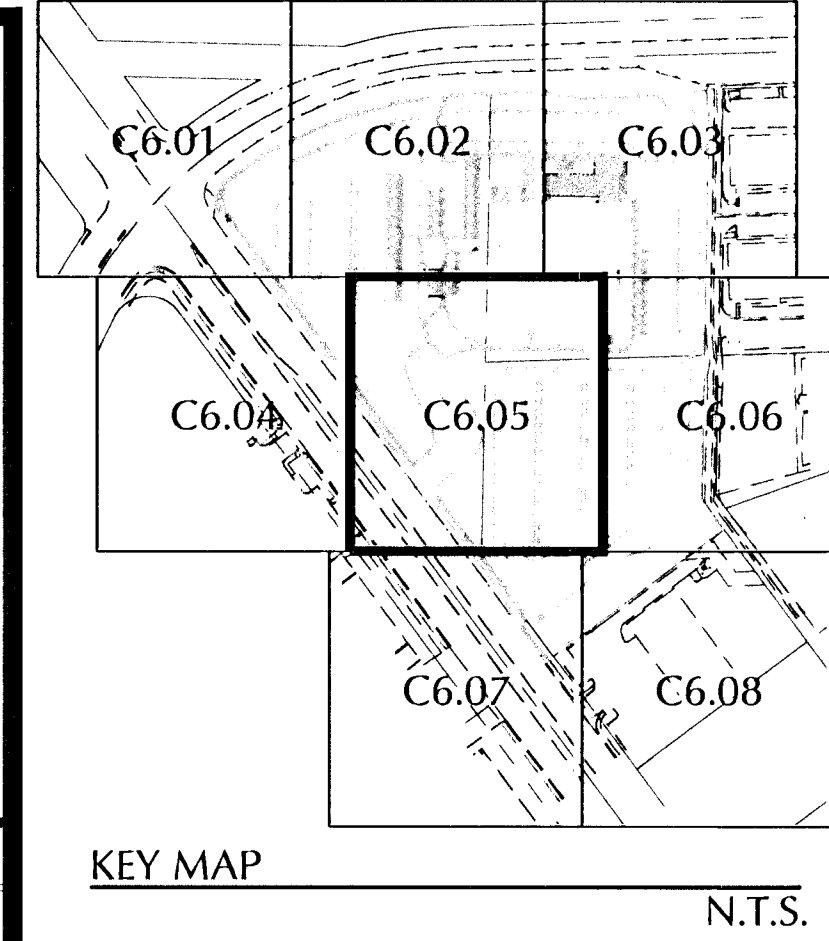


SEE SHEET C6.02 FOR CONTINUATION



SEE SHEET C6.07 FOR CONTINUATION



KEY MAP N.T.S.

GRAPHIC SCALE
 (IN FEET)
 1 INCH = 20 FT

BENCHMARK
 CITY OF LAS VEGAS VERTICAL CONTROL POINT "5LVO02SES";
 BEING A RIVET AND PLATE IN TOP OF CURB AT THE
 SOUTHEAST CORNER OF RANCHO AND JONES (NORTH).
 ELEVATION = 2270.23 FEET
 691.9676 METERS
 NORTH AMERICAN VERTICAL DATUM OF 1988 (NAVD88)

BASIS OF BEARING
 NORTH 36°40'24" WEST BEING BEARING OF THE CENTERLINE OF
 RANCHO DRIVE FROM ALEXANDER ROAD TO DUNCAN DRIVE AS
 SHOWN ON FILE 151, PAGE 01 OF SURVEYS ON FILE IN THE
 CLARK COUNTY, NEVADA RECORDER'S OFFICE.

SIGNAGE AND STRIPING NOTES

NO.	ITEM
1	INSTALL R1-1 "STOP" SIGN PER CCUSD NO. 249A (SEE SHEET C8.05). SEE SHEET C6.08 FOR SIGN DETAIL.
2	INSTALL 4" WHITE PAINTED HATCH LINES 3' O.C. @ 45'.
3	INSTALL BLUE AND WHITE PAINTED HANDICAP PAVEMENT MARKINGS.
4	INSTALL 4" WHITE PAINTED PARKING STALL LINE.
5	INSTALL R7-1 APR "NO PARKING" SIGN PER CCUSD NO. 249A (SEE SHEET C8.05). SEE SHEET C6.08 FOR SIGN DETAIL.
6	INSTALL R7-8 "RESERVED PARKING" SIGN PER CCUSD NO. 249A (SEE SHEET C.805). SEE SHEET C6.08 FOR SIGN DETAIL.
7	INSTALL TYPE 2 CENTERLINE PAVEMENT MARKING PER CCUSD NO. 244.
8	INSTALL TYPE 4 LANE LINE PER CCUSD NO. 244A.
9	INSTALL TYPE 1 CENTERLINE PAVEMENT MARKING PER CCUSD NO. 244.
10	INSTALL R3-7R "RIGHT LANE MUST TURN RIGHT" SIGN PER CCUSD NO. 249A (SEE SHEET C8.05). SEE SHEET C6.08 FOR SIGN DETAIL.
11	INSTALL CUSTOM "STAFF PARKING ONLY" SIGN PER CCUSD NO. 249A (SEE SHEET C8.05). SEE SHEET C6.08 FOR SIGN DETAIL.
12	INSTALL R6-1 "DO NOT ENTER" SIGN PER CCUSD NO. 249A (SEE SHEET C8.05). SEE SHEET C6.08 FOR SIGN DETAIL.
13	INSTALL R6-1R "ONE WAY" SIGN PER CCUSD NO. 249A (SEE SHEET C8.05). SEE SHEET C6.08 FOR SIGN DETAIL.
14	INSTALL R7-8 "RESERVED PARKING" SIGN AND R7-8B "VAN ONLY" SIGN PER CCUSD NO. 249A (SEE SHEET C8.05). SEE SHEET C6.08 FOR SIGN DETAIL.
15	INSTALL W11-2A "PEDESTRIAN CROSSING" SIGN PER CCUSD NO. 249A (SEE SHEET C8.05). SEE SHEET C6.08 FOR SIGN DETAIL.
16	INSTALL WR2-1 "SPEED LIMIT 10MPH" SIGN PER CCUSD NO. 249A (SEE SHEET C8.05). SEE SHEET C6.08 FOR SIGN DETAIL.
17	INSTALL 8" SOLID WHITE PAINTED EDGE LINE.
18	INSTALL ADDED RIGHT TURN LANE PAVEMENT MARKINGS PER CCUSD NO. 246 AND DETAIL A, SHEET C6.08.
19	INSTALL LANE TRANSITION MARKINGS PER CCUSD NO. 245.
20	REMOVE EXISTING CROSSWALK AND PROTECT STOP BAR IN PLACE.
21	EXTEND EXISTING CROSSWALK AND STOP BAR MARKINGS PER CCUSD NO. 254A AND RESTORE EXISTING MARKING TO LIKE NEW CONDITION.
22	INSTALL STOP BAR PER CCUSD NO. 254A.
23	INSTALL LEFT TURN LANE PAVEMENT MARKINGS PER CCUSD NO. 246 AND DETAIL A, SHEET C6.08.
24	INSTALL PAVEMENT MARKINGS AS SHOWN.
25	REPAIR EXISTING LANE LINES AND PAVEMENT MARKINGS TO LIKE NEW CONDITION.

STREETLIGHT AND CONDUIT NOTES CONT.

NO.	ITEM
8	INSTALL TYPE 7 STREETLIGHT POLE WITH 250W HPS LUMINAIRE PER NDOT STD. DWG. T-30.1.10, T-30.1.9 AND T-30.1.16

STREETLIGHT AND CONDUIT NOTES

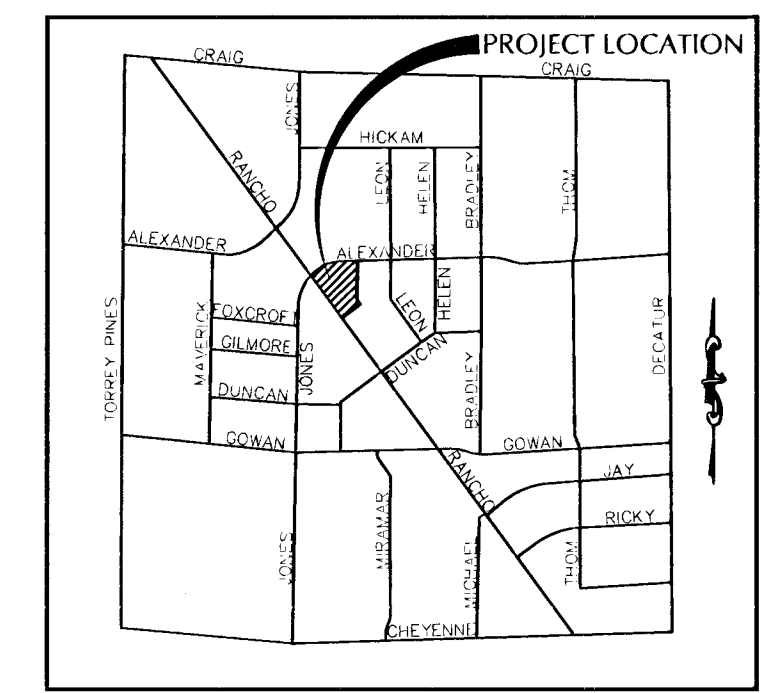
NO.	ITEM
1	INSTALL 250W HPS LUMINAIRE PER CCUSD NO. 316, 320 AND 321.
2	INSTALL NO. 3 1/2 PULLBOX PER CCUSD NO. 326 AND 328.
3	INSTALL 200 AMP SERVICE PEDESTAL AND FOUNDATION PER CCUSD NO. 330 AND 332.1.
4	INSTALL 2" STREETLIGHT CONDUIT WITH (2) #4 AND (1) #8 THW COPPER CONDUCTORS. RED OR ORANGE WARNING TAPE TO BE INSTALLED 12" ABOVE CONDUIT.
5	INSTALL 4" FAST PVC CONDUIT WITH #8 BARE TRAILING WIRE AND RED OR ORANGE WARNING TAPE MARKED WITH FIBER OPTIC 12" ABOVE CONDUIT.
6	INSTALL P30 PULLBOX WITH FIBER OPTIC INSCRIBED ON LID PER CCUSD NO. 404.132.
7	INSTALL TYPE 200 VAULT WITH FIBER OPTIC INSCRIBED ON LID PER CCUSD NO. 404.133.

NDOT NOTE:
 NDOT PERMIT REQUIRED.
 CONTRACTOR TO OBTAIN NDOT
 OCCUPANCY PERMIT PRIOR TO
 CONSTRUCTION IN NDOT RIGHT OF
 WAY.

SIGHT VISIBILITY ZONE LEGEND

SIGHT VISIBILITY ZONE

SIGHT VISIBILITY ZONE NOTE:
 NO WALLS, FENCES, TREES, SHRUBS, UTILITY
 APPURTENANCES OR ANY OTHER OBJECT,
 OTHER THAN TRAFFIC CONTROL DEVICES AND
 STREETLIGHT POLES, MAY BE CONSTRUCTED
 OR INSTALLED WITH THE SIGHT VISIBILITY
 ZONE UNLESS SAID OBJECT IS MAINTAINED
 AT LESS THAN 24 INCHES IN HEIGHT.

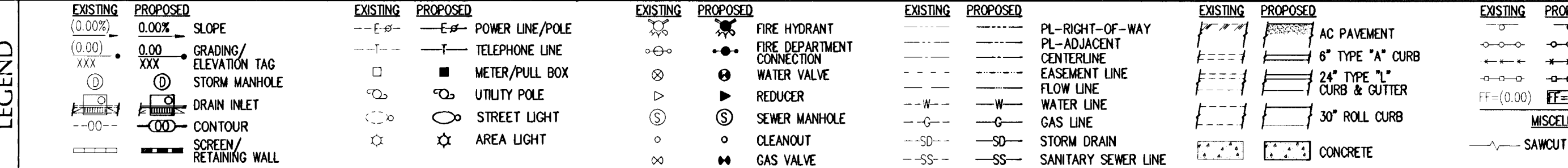
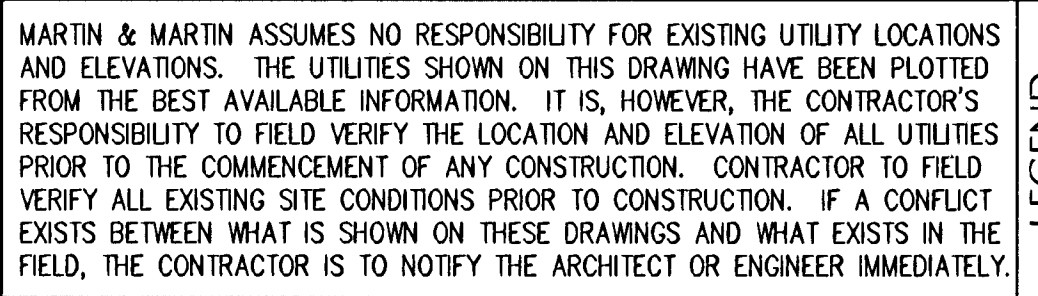


VICINITY MAP N.T.S.

NOTE:
 "OWNER RESPONSIBLE TO PROVIDE SURVEY MONUMENTATION AS SHOWN AND TO REPLACE ALL SURVEY MONUMENTATION DAMAGED, DISTURBED, DESTROYED OR OBTUSCURED DURING CONSTRUCTION."

NOTE:
 ALL DIMENSIONS ARE TAKEN FROM BACK OF CURB UNLESS OTHERWISE NOTED.

NOTE:
 MARTIN & MARTIN ASSUMES NO RESPONSIBILITY FOR EXISTING UTILITY LOCATIONS AND ELEVATIONS. THE UTILITIES SHOWN ON THIS DRAWING HAVE BEEN PLOTTED FROM THE BEST AVAILABLE INFORMATION. IT IS, HOWEVER, THE CONTRACTOR'S RESPONSIBILITY TO FIELD VERIFY THE LOCATION AND ELEVATION OF ALL UTILITIES PRIOR TO THE COMMENCEMENT OF ANY CONSTRUCTION. CONTRACTOR TO FIELD VERIFY ALL EXISTING SITE CONDITIONS PRIOR TO CONSTRUCTION. IF A CONFLICT EXISTS BETWEEN WHAT IS SHOWN ON THESE DRAWINGS AND WHAT EXISTS IN THE FIELD, THE CONTRACTOR IS TO NOTIFY THE ARCHITECT OR ENGINEER IMMEDIATELY.



NO.	DESCRIPTION OF REVISIONS	DATE	INITIALS
1	REVISE STREETLIGHT POLES, FOUNDATIONS, AND LOCATIONS.	12/7/2010	T.M.

DATE: 08/20/10
 JOB NUMBER: 3077
 DESIGN BY: R. GOEBEL
 DRAWN BY: R. GOEBEL
 CHECKED BY: T. MILLER, P.E.

MARTIN & MARTIN
 Civil Engineers
 1909 S. Jones Boulevard
 Las Vegas, Nevada 89146
 Phone (702) 248-8000
 Fax (702) 248-8070

DEPARTMENT OF VETERANS AFFAIRS
 NORTHWEST LAS VEGAS OUTPATIENT CLINIC
 APN: 138-12-102-001, 002, 138-12-110-011
 SIGNAGE, STRIPING AND STREETLIGHTING PLAN

SHEET NUMBER
C6.05
 SHEET 42 OF 69
 CLV#167V5514

H# 38756