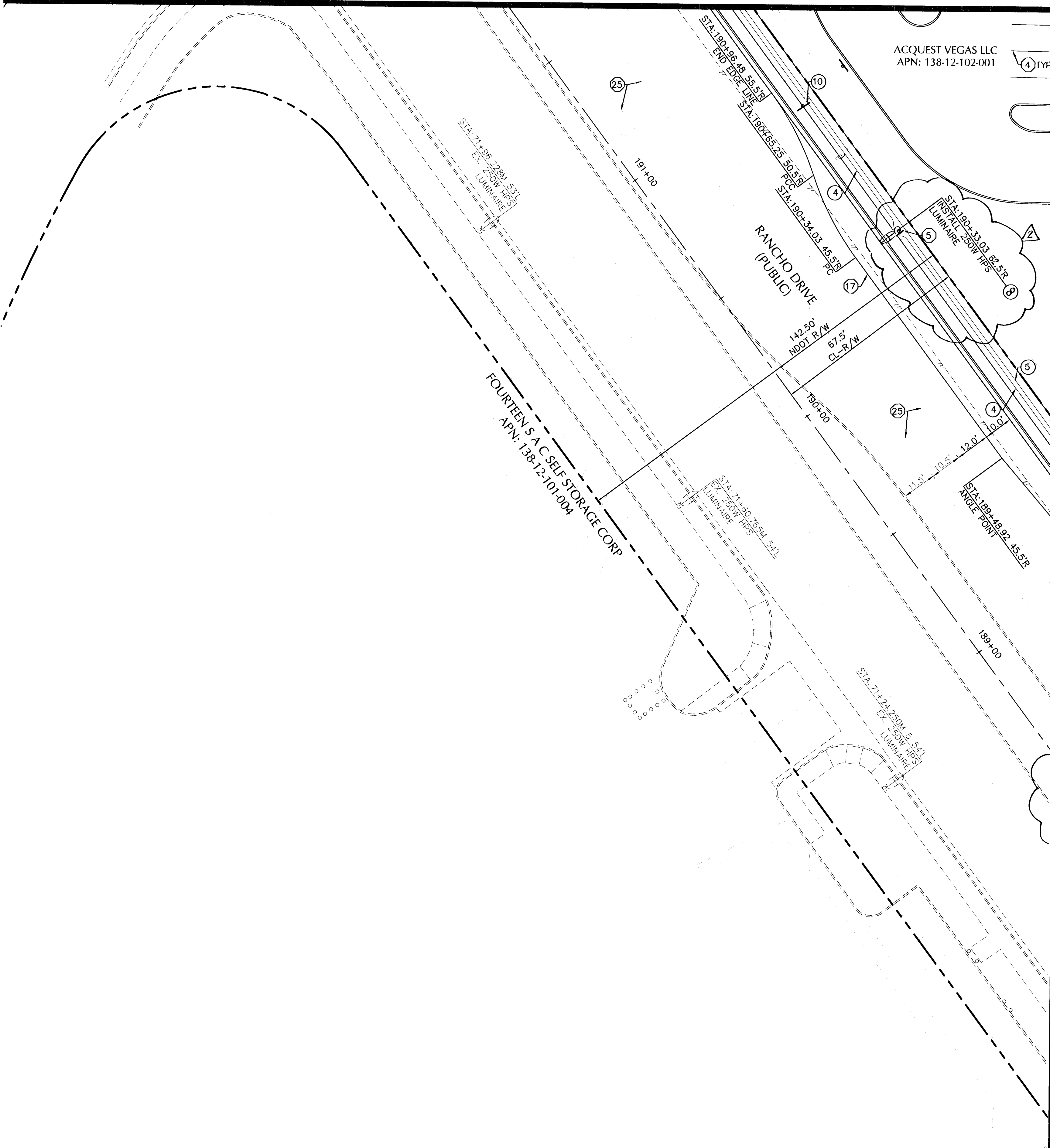
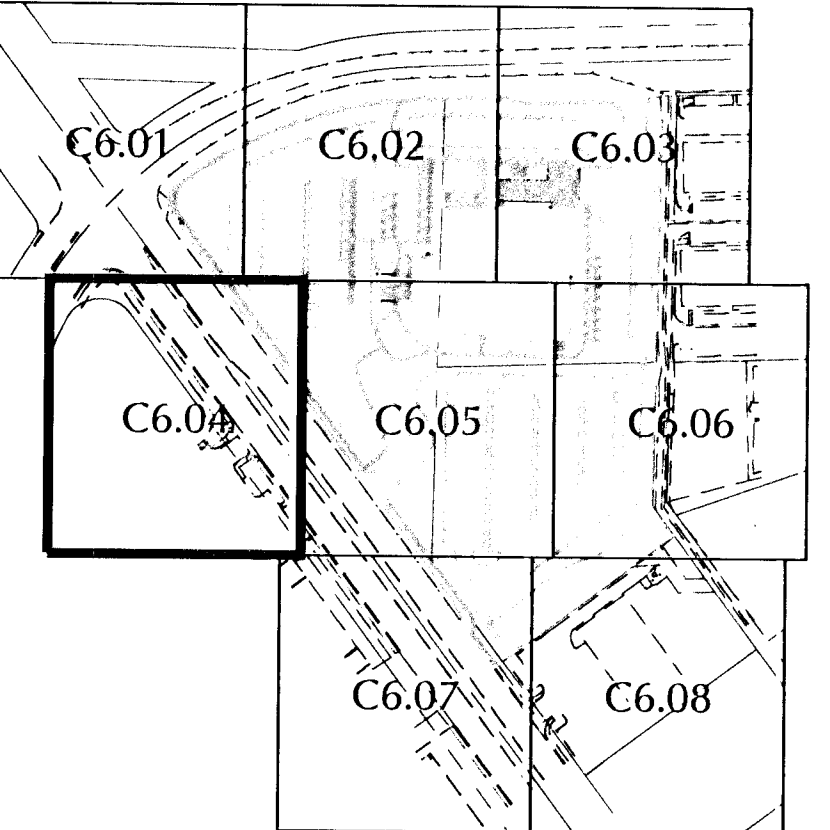


SEE SHEET C6.01 FOR CONTINUATION



ACQUEST VEGAS LLC
APN: 138-12-102-001

FOURTEEN S.A.C. SELF STORAGE CORP.
APN: 138-12-101-004



KEY MAP N.T.S.

GRAPHIC SCALE



BENCHMARK

CITY OF LAS VEGAS VERTICAL CONTROL POINT "SLV002SES", BEING A RIVET AND PLATE IN TOP OF CURB AT THE SOUTHEAST CORNER OF RANCHO AND JONES (NORTH).
ELEVATION = 2270.23 FEET
691.9676 METERS
NORTH AMERICAN VERTICAL DATUM OF 1988 (NAVD88)

BASIS OF BEARING

NORTH 36°40'24" WEST BEING BEARING OF THE CENTERLINE OF RANCHO DRIVE FROM ALEXANDER ROAD TO DUNCAN DRIVE AS SHOWN ON FILE 151, PAGE 01 OF SURVEYS ON FILE IN THE CLARK COUNTY, NEVADA RECORDER'S OFFICE.

SIGNAGE AND STRIPING NOTES

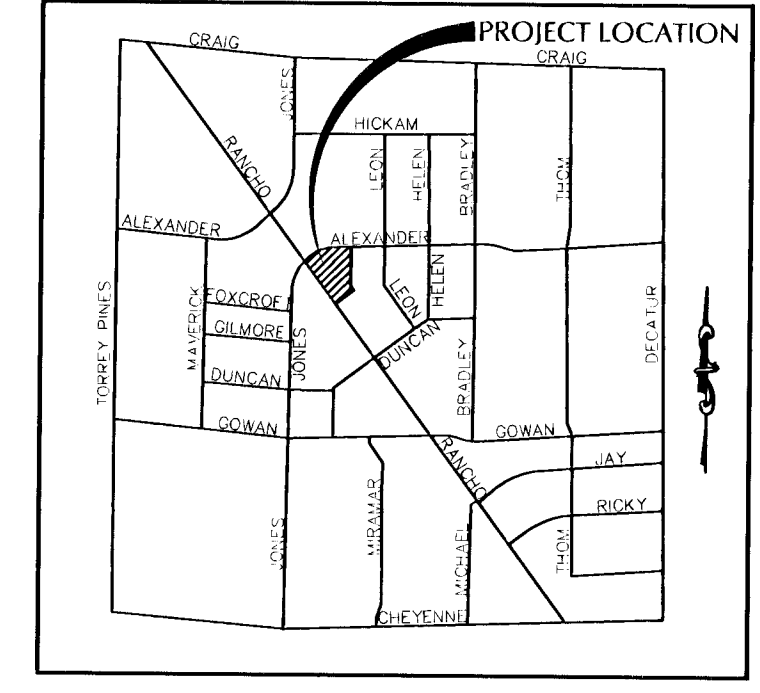
NO.	ITEM
1	INSTALL R1-1 "STOP" SIGN PER CCUSD NO. 249A (SEE SHEET C8.05). SEE SHEET C6.08 FOR SIGN DETAIL.
2	INSTALL 4" WHITE PAINTED HATCH LINES 3' O.C. @ 45'.
3	INSTALL BLUE AND WHITE PAINTED HANDICAP PAVEMENT MARKINGS.
4	INSTALL 4" WHITE PAINTED PARKING STALL LINE.
5	INSTALL R7-1APR "NO PARKING" SIGN PER CCUSD NO. 249A (SEE SHEET C8.05). SEE SHEET C6.08 FOR SIGN DETAIL.
6	INSTALL R7-8 "RESERVED PARKING" SIGN PER CCUSD NO. 249A (SEE SHEET C.805). SEE SHEET C6.08 FOR SIGN DETAIL.
7	INSTALL TYPE 2 CENTERLINE PAVEMENT MARKING PER CCUSD NO. 244.
8	INSTALL TYPE 4 LANE LINE PER CCUSD NO. 244A.
9	INSTALL TYPE 1 CENTERLINE PAVEMENT MARKING PER CCUSD NO. 244.
10	INSTALL R3-7R "RIGHT LANE MUST TURN RIGHT" SIGN PER CCUSD NO. 249A (SEE SHEET C8.05). SEE SHEET C6.08 FOR SIGN DETAIL.
11	INSTALL CUSTOM "STAFF PARKING ONLY" SIGN PER CCUSD NO. 249A (SEE SHEET C8.05). SEE SHEET C6.08 FOR SIGN DETAIL.
12	INSTALL R5-1 "DO NOT ENTER" SIGN PER CCUSD NO. 249A (SEE SHEET C8.05). SEE SHEET C6.08 FOR SIGN DETAIL.
13	INSTALL R6-1R "ONE WAY" SIGN PER CCUSD NO. 249A (SEE SHEET C8.05). SEE SHEET C6.08 FOR SIGN DETAIL.
14	INSTALL R7-8 "RESERVED PARKING" SIGN AND R7-8B "VAN ONLY" SIGN PER CCUSD NO. 249A (SEE SHEET C8.05). SEE SHEET C6.08 FOR SIGN DETAIL.
15	INSTALL W11-2A "PEDESTRIAN CROSSING" SIGN PER CCUSD NO. 249A (SEE SHEET C8.05). SEE SHEET C6.08 FOR SIGN DETAIL.
16	INSTALL WR2-1 "SPEED LIMIT 10MPH" SIGN PER CCUSD NO. 249A (SEE SHEET C8.05). SEE SHEET C6.08 FOR SIGN DETAIL.
17	INSTALL 8" SOLID WHITE PAINTED EDGE LINE.
18	INSTALL ADDED RIGHT TURN LANE PAVEMENT MARKINGS PER CCUSD NO. 246 AND DETAIL A, SHEET C6.08.
19	INSTALL LANE TRANSITION MARKINGS PER CCUSD NO. 245.
20	REMOVE EXISTING CROSSWALK AND PROTECT STOP BAR IN PLACE.
21	EXTEND EXISTING CROSSWALK AND STOP BAR MARKINGS PER CCUSD NO. 254A AND RESTORE EXISTING MARKING TO LIKE NEW CONDITION.
22	INSTALL STOP BAR PER CCUSD NO. 254A.
23	INSTALL LEFT TURN LANE PAVEMENT MARKINGS PER CCUSD NO. 246 AND DETAIL A, SHEET C6.08.
24	INSTALL PAVEMENT MARKINGS AS SHOWN.
25	REPAIR EXISTING LANE LINES AND PAVEMENT MARKINGS TO LIKE NEW CONDITION.

STREETLIGHT AND CONDUIT NOTES CONT.

NO.	ITEM
8	INSTALL TYPE 7 STREETLIGHT POLE WITH 250W HPS LUMINAIRE PER NDOT STD. DWG. T-30.1.10, T-30.1.9 AND T-30.1.16

STREETLIGHT AND CONDUIT NOTES

NO.	ITEM
1	INSTALL 250W HPS LUMINAIRE PER CCUSD NO. 316, 320 AND 321.
2	INSTALL NO. 3 1/2 PULLBOX PER CCUSD NO. 326 AND 328.
3	INSTALL 200 AMP SERVICE PEDESTAL AND FOUNDATION PER CCUSD NO. 330 AND 332.1.
4	INSTALL 2" STREETLIGHT CONDUIT WITH (2) #4 AND (1) #8 THW COPPER CONDUCTORS. RED OR ORANGE WARNING TAPE TO BE INSTALLED 12" ABOVE CONDUIT.
5	INSTALL 4" FAST PVC CONDUIT WITH #8 BARE TRAILING WIRE AND RED OR ORANGE WARNING TAPE MARKED WITH FIBER OPTIC 12" ABOVE CONDUIT.
6	INSTALL P30 PULLBOX WITH FIBER OPTIC INSCRIBED ON LID PER CCUSD NO. 404.132.
7	INSTALL TYPE 200 VAULT WITH FIBER OPTIC INSCRIBED ON LID PER CCUSD NO. 404.133.

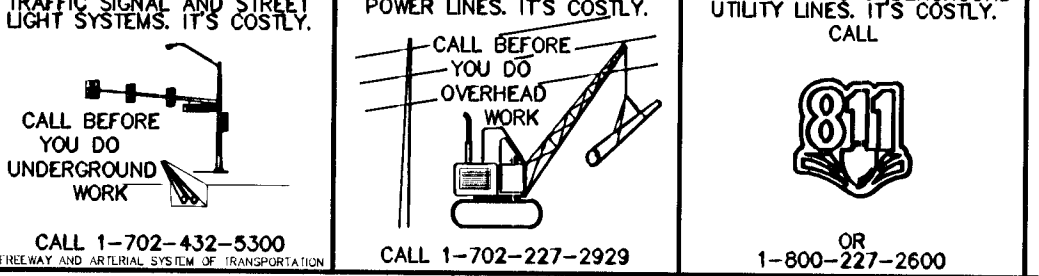


VICINITY MAP N.T.S.

NDOT NOTE:
NDOT PERMIT REQUIRED.
CONTRACTOR TO OBTAIN NDOT OCCUPANCY PERMIT PRIOR TO CONSTRUCTION IN NDOT RIGHT OF WAY.

NOTE:
"OWNER RESPONSIBLE TO PROVIDE SURVEY MONUMENTATION AS SHOWN AND TO REPLACE ALL SURVEY MONUMENTATION DAMAGED, DISTURBED, DESTROYED OR OBSCURED DURING CONSTRUCTION."

NOTE:
ALL DIMENSIONS ARE TAKEN FROM BACK OF CURB UNLESS OTHERWISE NOTED.

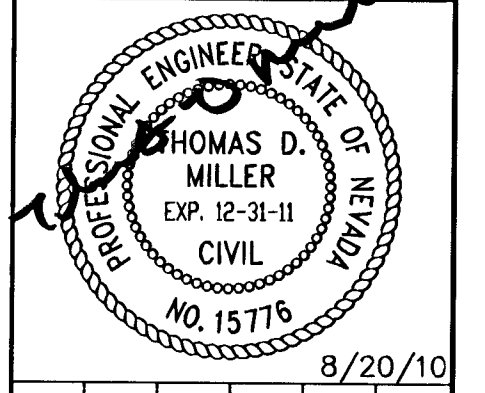


MARTIN & MARTIN ASSUMES NO RESPONSIBILITY FOR EXISTING UTILITY LOCATIONS AND ELEVATIONS. THE UTILITIES SHOWN ON THIS DRAWING HAVE BEEN PLOTTED FROM THE BEST AVAILABLE INFORMATION. IT IS, HOWEVER, THE CONTRACTOR'S RESPONSIBILITY TO FIELD VERIFY THE LOCATION AND ELEVATION OF ALL UTILITIES PRIOR TO THE COMMENCEMENT OF ANY CONSTRUCTION. CONTRACTOR TO FIELD VERIFY ALL EXISTING SITE CONDITIONS PRIOR TO CONSTRUCTION. IF A CONFLICT EXISTS BETWEEN WHAT IS SHOWN ON THESE DRAWINGS AND WHAT EXISTS IN THE FIELD, THE CONTRACTOR IS TO NOTIFY THE ARCHITECT OR ENGINEER IMMEDIATELY.

LEGEND

EXISTING	PROPOSED	DESCRIPTION
(0.00)	0.00%	SLOPE
(0.00)	XXX	GRADING/ELEVATION TAG
(0.00)	XXX	STORM MANHOLE
(0.00)	XXX	DRAIN INLET
(0.00)	XXX	CONTOUR
(0.00)	XXX	SYSTEM/RETAINING WALL
---	---	POWER LINE/POLE
---	---	TELEPHONE LINE
---	---	METER/PULL BOX
---	---	UTILITY POLE
---	---	STREET LIGHT
---	---	AREA LIGHT
---	---	FIRE HYDRANT
---	---	FIRE DEPARTMENT CONNECTION
---	---	WATER VALVE
---	---	REDUCER
---	---	SEWER MANHOLE
---	---	CLEANOUT
---	---	GAS VALVE
---	---	PL-RIGHT-OF-WAY
---	---	PL-ADJACENT
---	---	CENTERLINE
---	---	EASEMENT LINE
---	---	FLOW LINE
---	---	WATER LINE
---	---	GAS LINE
---	---	STORM DRAIN
---	---	SANITARY SEWER LINE
---	---	AC PAVEMENT
---	---	8" TYPE "A" CURB
---	---	24" TYPE "C" CURB & GUTTER
---	---	30" ROLL CURB
---	---	CONCRETE
---	---	SIGN W/POLE
---	---	CHAIN LINK FENCE
---	---	WIRE FENCE
---	---	GUARDRAIL
---	---	FINISH FLOOR
---	---	MISCELLANEOUS
---	---	SAWCUT LINE
---	---	RIP-RAP

NO.	DESCRIPTION OF REVISIONS	DATE	INITIALS
1	REVISE STREETLIGHT POLES, FOUNDATION AND LAYOUT LOCATIONS	8/20/10	T.M.



DATE	08/20/10
JOB NUMBER	3077
DESIGN BY	R. GOEBEL
DRAWN BY	R. GOEBEL
CHECKED BY	T. MILLER, P.E.

DEPARTMENT OF VETERANS AFFAIRS
NORTHWEST LAS VEGAS OUTPATIENT CLINIC
APN: 138-12-102-001, 002, 138-12-110-011
SIGNAGE, STRIPING AND STREETLIGHTING PLAN

MARTIN & MARTIN
Civil Engineers
1909 S. Jones Boulevard
Las Vegas, Nevada 89146
Phone (702) 248-8000
Fax (702) 248-8070

SHEET NUMBER
C6.04
SHEET 41 OF 69
CLV# 107V5919