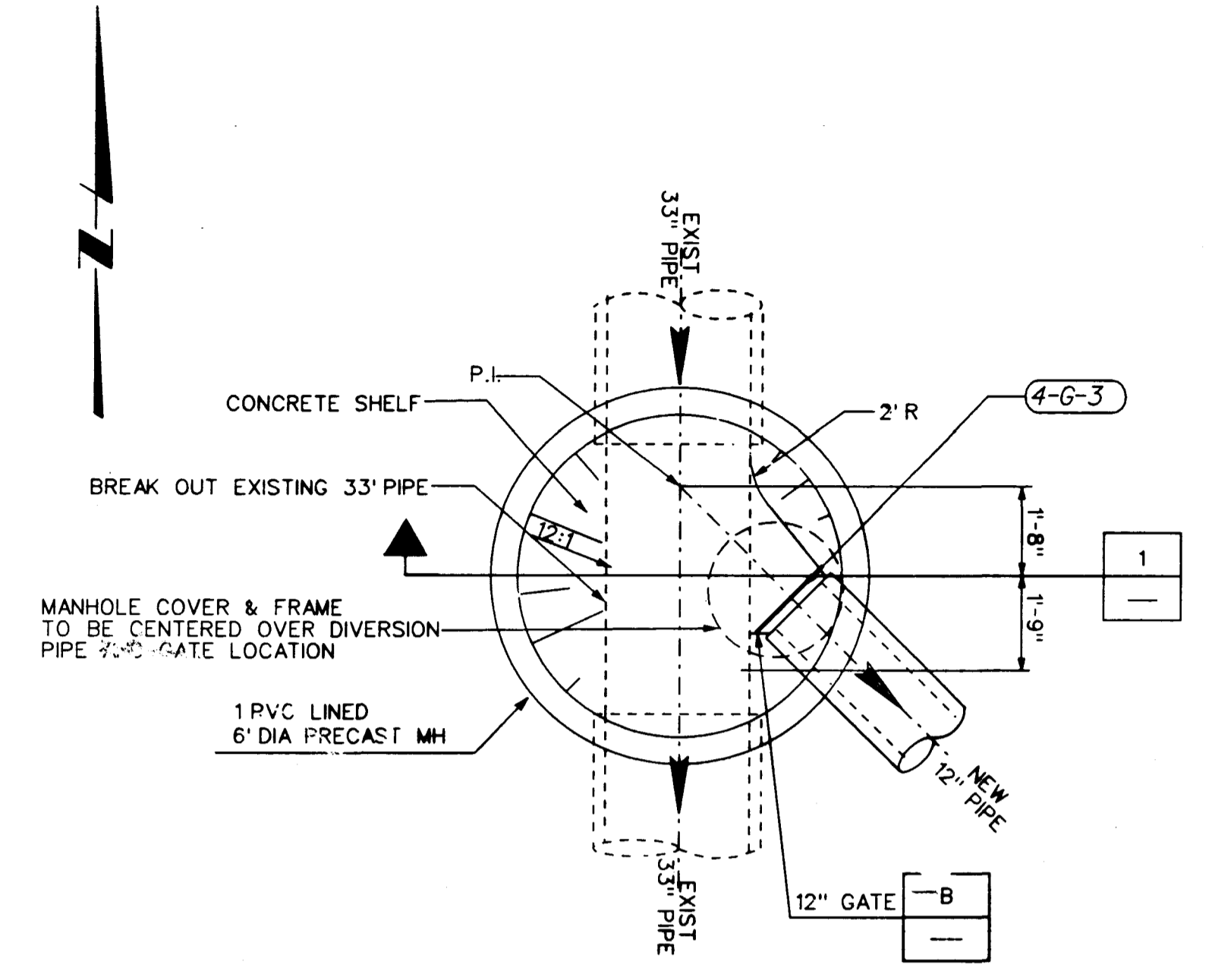
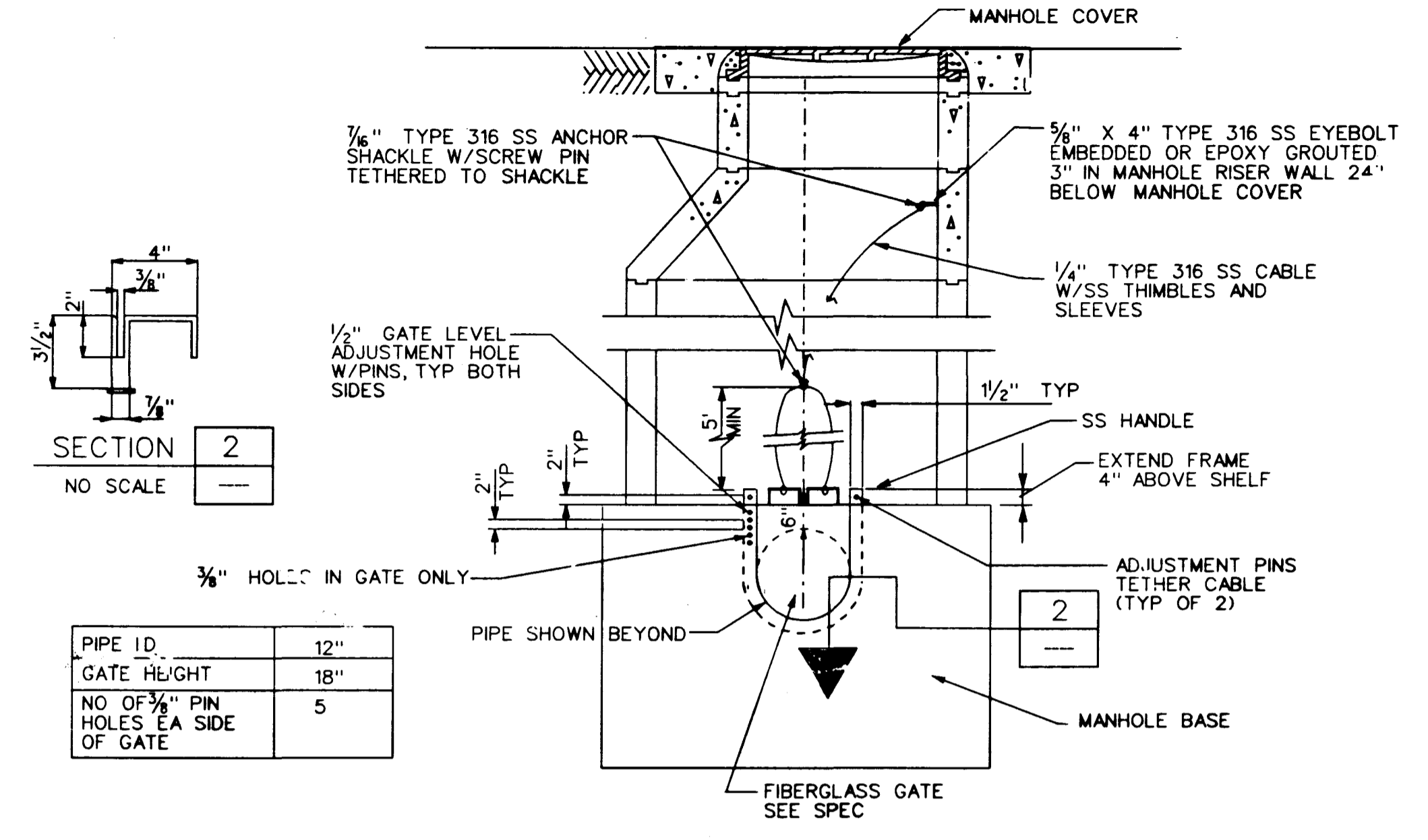


DATE/TIME 23-JUN-1997 10:41

JOB No. 1540.0131 FILE No. c:\data\civ. w\c\civ\plans\steel\lbzm09c05.dgn



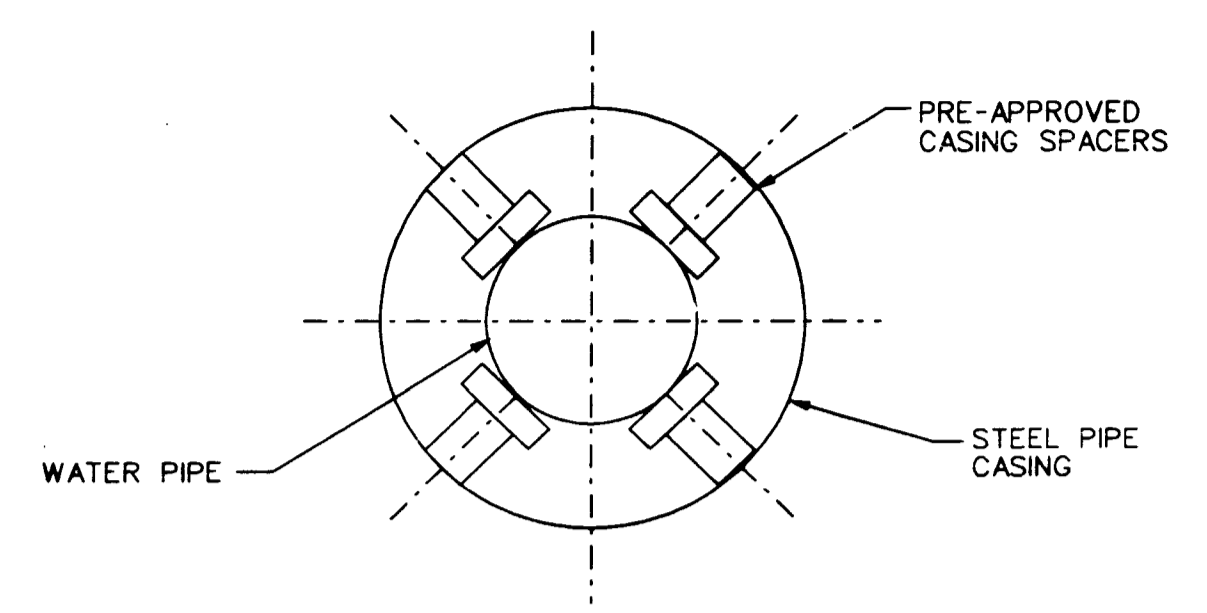
33" FLOW DIVERSION MANHOLE
SCALE 3/8" = 1'-0"
A
C-8



PIPE ID.	12"
GATE HEIGHT	18"
NO OF 3/8" PIN HOLES EA SIDE OF GATE	5

- NOTES:
- GATE LEVEL ADJUSTMENT PINS SHALL BE 3/8" DIA X 4" LONG AND EXTEND THROUGH BOTH SIDES OF GATE FRAME. PINS SHALL BE ATTACHED TO FRAME WITH 8" MIN LENGTH TETHER CABLES.
 - ALL METALS SHALL BE TYPE 316 STAINLESS STEEL

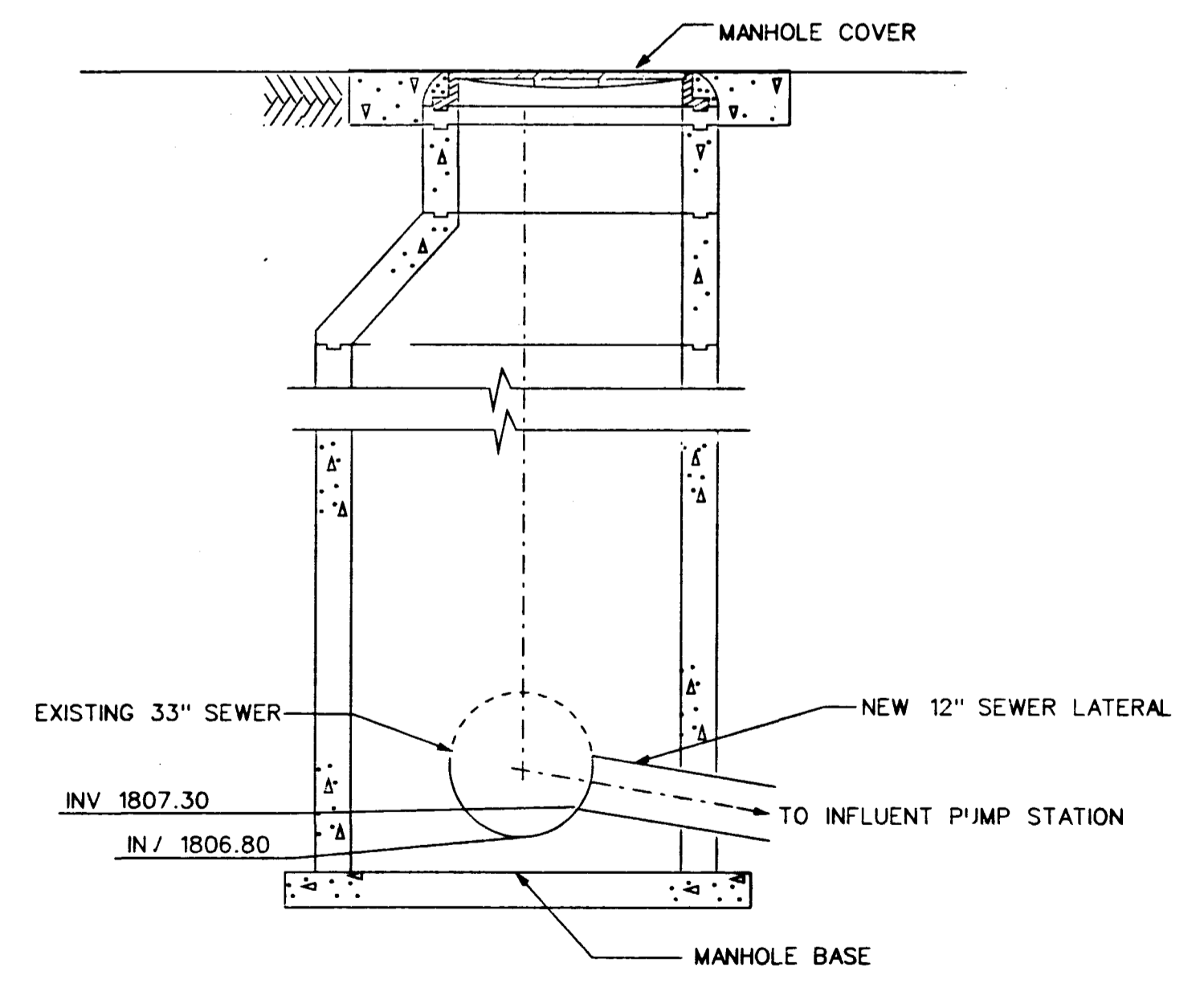
FLOW DIVERSION MANHOLE
GATE DETAIL
SCALE 3/8" = 1'-0"
B



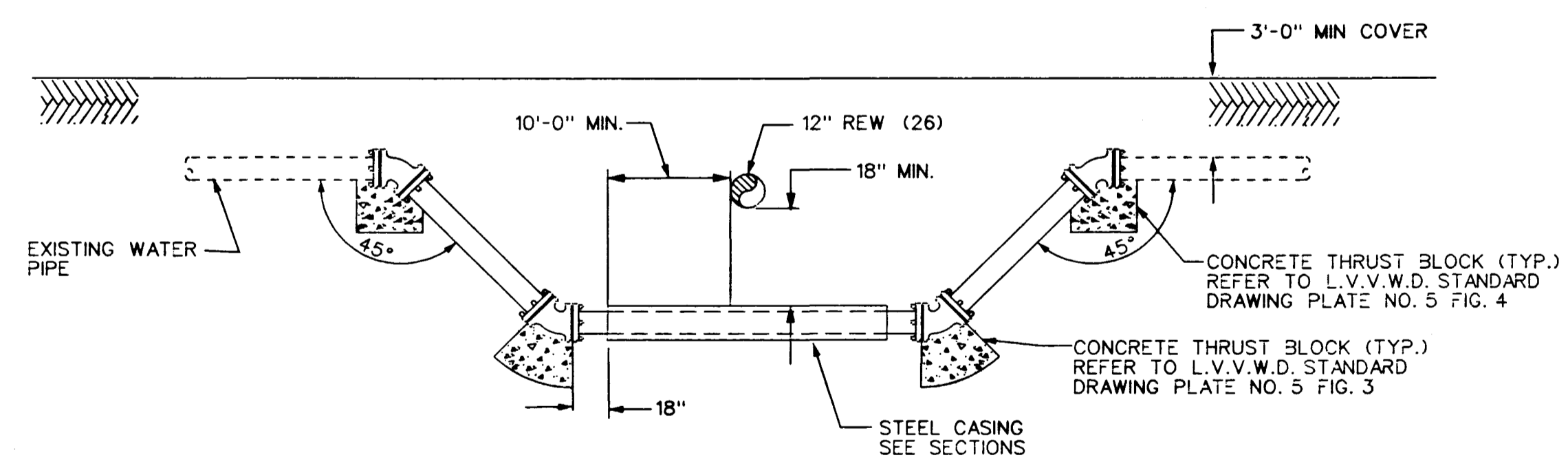
TYPICAL CASING SECTION

- NOTES:
- STEEL PIPE CASING SYMMETRICAL ABOUT WATER MAIN CENTERLINE.
 - PRE-APPROVED CASING SPACERS AND PRE-APPROVED END SEALS INSTALLED PER MANUFACTURER'S SPECIFICATIONS. (REDWOOD SKIDS NOT ALLOWED. UDACS SECTION 3.26 NOT APPLICABLE) USE A "CENTERED" CONFIGURATION AND PROVIDE THE MANUFACTURER WITH THE FOLLOWING:
 - PIPE OD
 - CASING ID
 - CASING LENGTH

- GENERAL NOTES:
- STEEL PIPE CASING SHALL BE FABRICATED FROM A MINIMUM OF 1/4" THICK STEEL PLATES, CONFORMING TO THE REQUIREMENTS OF ASTM A283, GRADE B, C, OR D. ALL JOINTS SHALL BE WELDED. INTERIOR JOINTS SHALL BE GROUND TO A SMOOTH FINISH. ALL WELDING SHALL BE PERFORMED IN ACCORDANCE WITH AWWA C201. "AWWA STANDARD FOR FABRICATED ELECTRICALLY WELDED STEEL WATER PIPE." COATINGS FOR STEEL CASINGS ARE NOT REQUIRED.
 - PIPE CASING SHALL BE LAID TRUE TO LINE AND GRADE WITH NO BENDS OR CHANGES IN GRADE FOR THE FULL LENGTH OF THE CASING
 - THE PIPE SHALL BE SUPPORTED AT EACH END JOINT WITH SPACERS. AFTER INSTALLATION OF THE PIPE, THE CASING SHALL BE SEALED AT BOTH ENDS WITH CASING SEALS. DUCTILE IRON PIPE JOINTS INSIDE CASING ARE TO BE RESTRAINED.



SECTION 1



L.V.V.W.D. WATER
PIPE RELOCATION DETAIL
C
C-6

[Signature] 6/23/97
LAS VEGAS VALLEY WATER DISTRICT DATE

REV	DATE	BY	DESCRIPTION

SCALE: NONE
WARNING: IF THIS BAR DOES NOT MEASURE 1" THEN DRAWING IS NOT TO SCALE.

DESIGNED S. McCLELLAND
DRAWN S. McCLELLAND
CHECKED B. EMERSON

SUBMITTED *[Signature]* 9422 6/23/97
PROJECT ENGINEER R. C. E. NO. DATE
RECOMMENDED *[Signature]* 7647 6-23-97
MONTGOMERY WATSON R. C. E. NO. DATE



MONTGOMERY WATSON
Las Vegas, Nevada

MONTGOMERY WATSON
3014 WEST CHARLESTON BLVD
LAS VEGAS, NV 89102-1944
(702) 878-8010
COPYRIGHT © 1997 BY MONTGOMERY WATSON
ALL RIGHTS RESERVED

CITY OF LAS VEGAS
BONANZA/MOJAVE WATER RESOURCE CENTER
MISCELLANEOUS CIVIL DETAILS-4

DWG. GC-5
107-V2677

Call before you Dig.
1-800-227-2600

