

NOTES:

FIRE HYDRANT RELOCATION AND LATERAL ABANDONMENT

WHERE SHOWN ON THE DRAWING(S), THE CONTRACTOR SHALL ABANDON THE EXISTING FIRE HYDRANT(S) BY REMOVING BOTH THE UPPER AND LOWER BARRELS OF THE FIRE HYDRANT SO THAT NO PORTION OF THE REMAINING FIRE HYDRANT ASSEMBLY IS CLOSER THAN 2 FEET TO THE EXISTING GRADE. THE EXISTING HYDRANT SHALL BE INSTALLED AT THE NEW LOCATION AS INDICATED ON THE DRAWING, IN ACCORDANCE WITH STANDARD PLATE NO. 7. THE EXISTING VALVE SHALL BE ABANDONED IN A CLOSED POSITION AND A MINIMUM OF THE TOP 12 INCHES OF THE VALVE BOX REMOVED. THE REMAINING PORTION OF THE VALVE BOX SHALL BE FILLED WITH CONCRETE HAVING A COMPRESSIVE STRENGTH OF AT LEAST 2,000 PSI. THE REMAINING PORTION OF THE HOLE MAY BE FILLED WITH CONCRETE OR ASPHALT CEMENT. THE LATERAL SHALL BE CUT AND CAPPED WHERE INDICATED. WHERE A JOINT OR COUPLING IN THE EXISTING PIPE IS UNCOVERED AT THE CUT AND CAP LOCATION, THE INSTALLATION OF A PLUG MAY BE PERMITTED, WITH AGENCY APPROVAL. A CONCRETE THRUST BLOCK SHALL BE INSTALLED AT ALL CUT AND CAP LOCATIONS IN ACCORDANCE WITH THE PROVISIONS OF STANDARD PLATE NO. 5.

FIRE HYDRANT INSTALLATION

FIRE HYDRANT(S) TO BE INSTALLED IN ACCORDANCE WITH THE U.D.A.C.S. STANDARD PLATE NO. 7

RELOCATION OF FIRE HYDRANTS (EXTENSION OF EXIST LATERAL)

THE CONTRACTOR SHALL REMOVE AND RELOCATE BOTH THE UPPER AND LOWER BARRELS OF THE EXISTING FIRE HYDRANT(S) WHERE SHOWN, EXTEND THE EXISTING LATERAL AS REQUIRED, AND REINSTALL SUCH HYDRANT(S) AT THE NEW LOCATION(S) INDICATED. INSTALLATION SHALL BE IN ACCORDANCE WITH STANDARD PLATE NO. 7. LATERALS MADE OF UNAPPROVED MATERIALS SHALL BE REPLACED FROM THE MAIN TO THE FIRE HYDRANT.

ABANDONMENT OF EXISTING SERVICE(S) - 2" AND SMALLER

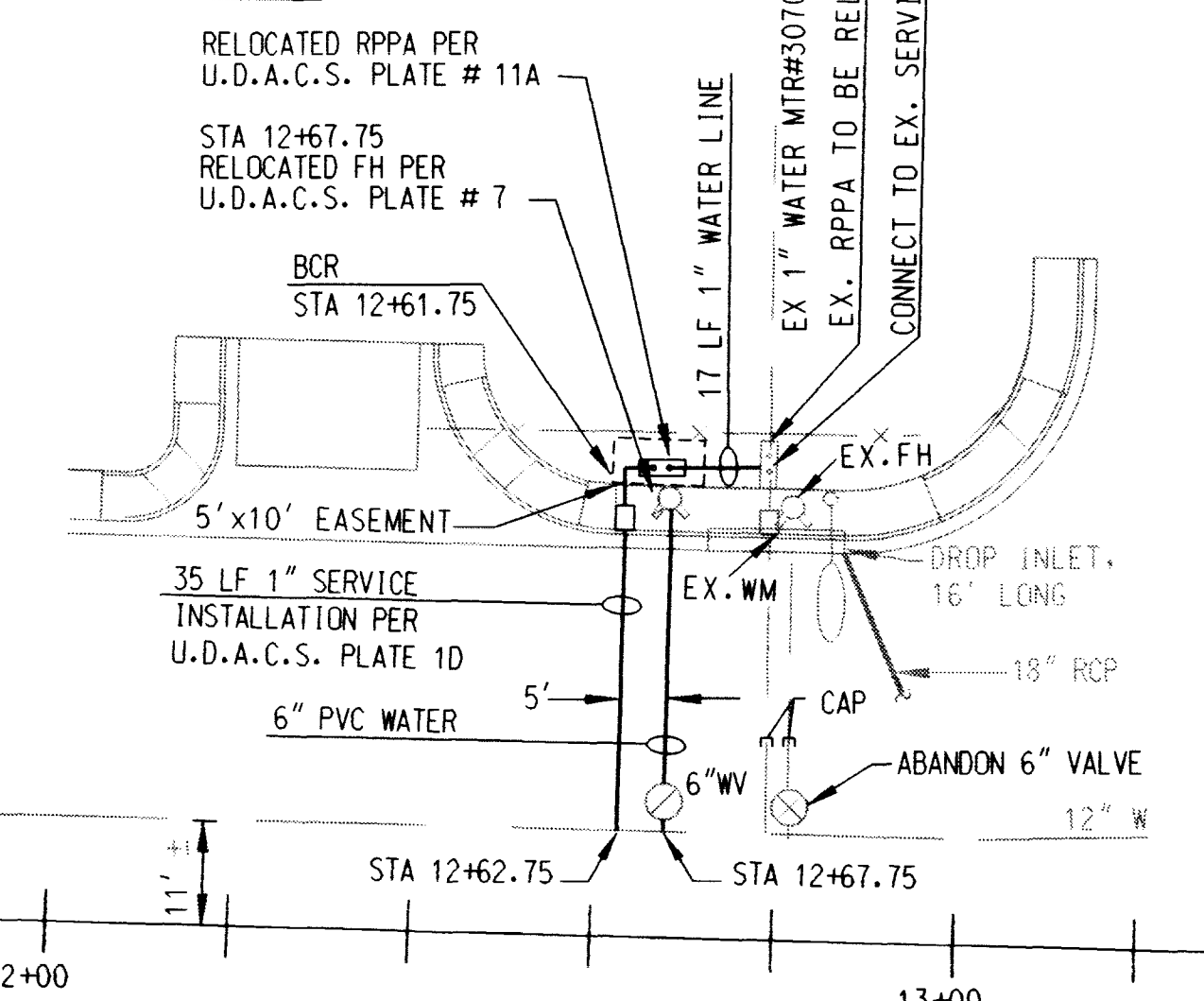
THE CONTRACTOR SHALL NOTIFY THE INSPECTION DIVISION AT THE LVVWD (702-258-3227) 48 HOURS PRIOR TO THE REQUESTED REMOVAL TIME TO ALLOW THE DISTRICT TO TAKE THE FINAL METER READING OF THE METER. AFTER THE FINAL READING, THE CONTRACTOR MAY THEN BEGIN REMOVAL PROCEDURES FOR THE AFFECTED SERVICE AS FOLLOWS: EXISTING SERVICE LATERALS THAT ARE TO BE ABANDONED FROM THE EXISTING WATER MAIN, SHALL HAVE THE CORPORATION STOP TURNED OFF AT THE MAIN, THE LATERAL CUT 6" DOWNSTREAM FROM THE CORPORATION STOP AND CUT AGAIN 6" DOWNSTREAM FROM THE FIRST CUT SUCH THAT A 6" PIECE OF THE EXISTING SERVICE LATERAL IS REMOVED. IF THE CORPORATION STOP IS DAMAGED BEYOND REPAIR OR PULLED FROM THE EXISTING WATER MAIN, THE MAIN SHALL BE REPAIRED AT THE CONTRACTOR'S EXPENSE, IN A MANNER APPROVED BY THE LVVWD. IF THE CORPORATION STOP IS NOT WATER TIGHT, THE CONTRACTOR SHALL NOTIFY LVVWD COMMUNICATION SUPPORT CENTER (702-258-7171) FOR FURTHER DIRECTION. THE CONTRACTOR SHALL REMOVE THE EXISTING SERVICE METER BOX AND APPURTANCES. FILL AND GRADE ANY AND ALL RESULTING VOIDS AND REPLACE OR RESTORE TO ORIGINAL CONDITIONS OR BETTER. ALL LANDSCAPING, IRRIGATION SYSTEMS, CONCRETE, SIDEWALKS, ASPHALT, OR ANY OTHER ITEMS DAMAGED OR REMOVED DURING THE REMOVAL OF THE EXISTING SERVICE METER BOX.

ABANDONMENT OF EXISTING SERVICE(S) - LARGER THAN 2"

THE CONTRACTOR SHALL NOTIFY THE INSPECTION DIVISION AT THE LVVWD (702-258-3227) 48 HOURS PRIOR TO THE REQUESTED REMOVAL TIME TO ALLOW THE DISTRICT TO TAKE THE FINAL METER READING OF THE METER. AFTER THE FINAL READING, THE CONTRACTOR MAY THEN BEGIN REMOVAL PROCEDURES FOR THE AFFECTED SERVICE AS FOLLOWS:

ALL VALVES TO BE ABANDONED IN THE CLOSED POSITION, UNLESS SHOWN OTHERWISE, BY REMOVING A MINIMUM OF THE TOP 12 INCHES OF THE VALVE BOX AND THEN FILLING THE REMAINING PORTION OF THE VALVE BOX WITH CONCRETE HAVING A COMPRESSIVE STRENGTH OF AT LEAST 2,000 PSI. THE CONTRACTOR SHALL CUT THE EXISTING PIPE 3' + BEYOND THE ABANDONED VALVE AND INSTALL A CAP. WHERE A JOINT OR COUPLING IN THE EXISTING PIPE IS UNCOVERED AT THE CUT AND CAP LOCATION, THE INSTALLATION OF A PLUG MAY BE PERMITTED WITH DISTRICT APPROVAL. THE CONTRACTOR SHALL INSTALL A CONCRETE THRUST BLOCK IN ACCORDANCE WITH THE PROVISIONS OF THE DISTRICT'S STANDARD PLATE NO. 5 AT ALL CAP OR PLUG LOCATIONS. THE EXISTING METER(S) SHALL BE REMOVED AND DELIVERED TO THE DISTRICT. THE CONTRACTOR SHALL THEN REMOVE AND/OR BACKFILL THE ABANDONED VAULT.

GOLF MAINTENANCE YARD



ABANDONED VALVE CUT AND CAP

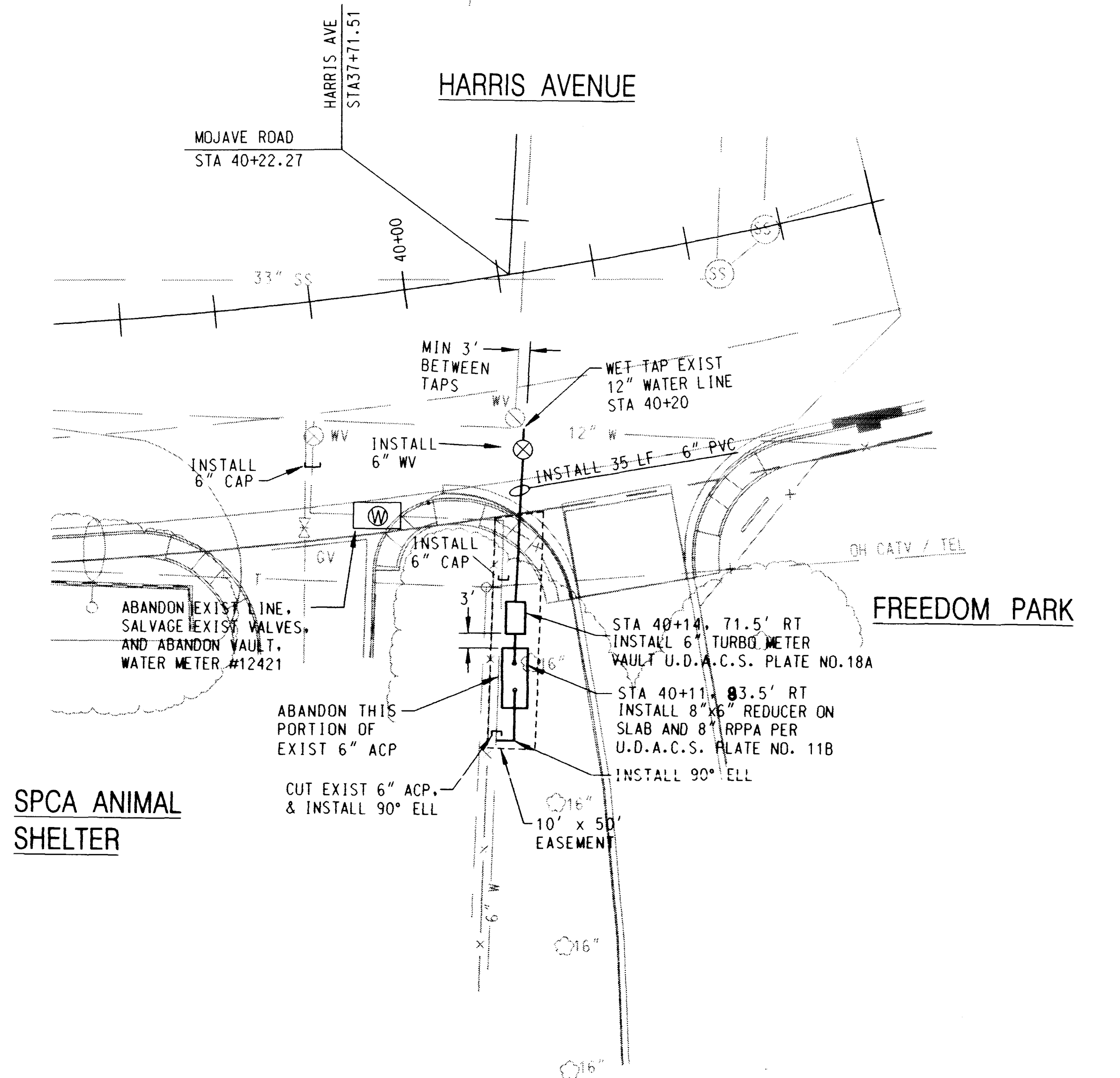
ALL VALVES TO BE ABANDONED IN THE CLOSED POSITION, UNLESS SHOWN OTHERWISE, BY REMOVING A MINIMUM OF THE TOP 12 INCHES OF THE VALVE BOX AND THEN FILLING THE REMAINING PORTION OF THE VALVE BOX WITH CONCRETE HAVING A COMPRESSIVE STRENGTH OF AT LEAST 2,000 PSI. THE CONTRACTOR SHALL CUT THE EXISTING PIPE 3' + BEYOND THE ABANDONED VALVE AND INSTALL A CAP. WHERE A JOINT OR COUPLING IN THE EXISTING PIPE IS UNCOVERED AT THE CUT AND CAP LOCATION, THE INSTALLATION OF A PLUG MAY BE PERMITTED WITH DISTRICT APPROVAL. THE CONTRACTOR SHALL INSTALL A CONCRETE THRUST BLOCK IN ACCORDANCE WITH THE PROVISIONS OF THE DISTRICT'S STANDARD PLATE NO. 5 AT ALL CAP OR PLUG LOCATIONS.

INSTALLATION OF METER AND VAULT

THE METER(S) AND VAULT(S) WITH NON-Traffic BEARING COVER(S) SHALL BE INSTALLED IN ACCORDANCE WITH THE U.D.A.C.S. PLATE NO. 18A AND WITH STANDARD VAULT DRAWING C-475, LATEST REVISION. ANY BLOCK WALL OR OTHER FENCE MATERIAL SHALL BE DESIGNED AND CONSTRUCTED AROUND THE OUTSIDE OF THE EASEMENT(S) TO ALLOW THE DISTRICT DIRECT ACCESS TO THE VAULT(S) FROM THE ADJACENT RIGHT-OF-WAY.

REDUCED PRESSURE PRINCIPLE ASSEMBLY

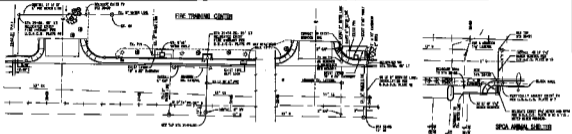
APPROVED REDUCED PRESSURE PRINCIPLE ASSEMBLY(S) SHALL BE INSTALLED PER THE U.D.A.C.S. PLATE NO. 11A OR 11B. NO WATER SHALL BE TAKEN FROM A SERVICE REQUIRING BACKFLOW PREVENTION UNTIL THE REDUCED PRESSURE PRINCIPAL ASSEMBLY HAS BEEN SUCCESSFULLY TESTED BY THE LVVWD. ANY BLOCK WALL OR OTHER FENCE MATERIAL SHALL BE DESIGNED AND CONSTRUCTED AROUND THE OUTSIDE OF THE EASEMENT(S) TO ALLOW THE DISTRICT DIRECT ACCESS FROM THE ADJACENT RIGHT-OF-WAY.



SPCA ANIMAL SHELTER

Bonnie Craft 8.17.97 DATE
L.V.V.W.D.
Ray Miller 8.17.97 DATE
CITY FIRE DEPT.

DATE	
REVISIONS	
DESIGN BY: S. JACKSON	
DATE: 05-19-97	
SCALE (V): 1" = 20'	
4305 S. INDUSTRIAL RD. SUITE 105 LAS VEGAS, NV 89103 TEL: 702-798-7314 FAX: 702-798-7451	
MK CENTENNIAL	
PROJECT: MOJAVE RD. IMPROVEMENTS	
SHEET: MOJAVE RD. WATER LINE LOCATION DETAIL SHEET	
CITY OF LAS VEGAS NEVADA	
DRAWING NO. 28 107-V2677	32



NOTES:

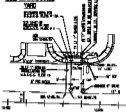
THE ATTACHED SPECIFICATIONS AND GENERAL REQUIREMENTS
 FOR THE CONSTRUCTION OF THE FIRE TRAINING CENTER
 SHALL BE READ IN CONNECTION WITH THE GENERAL
 CONDITIONS OF CONTRACT AND THE SPECIFICATIONS
 OF THE BOARD OF SUPERVISORS AND THE
 STANDARD SPECIFICATIONS FOR PUBLIC WORKS
 OF THE STATE OF CALIFORNIA, LATEST EDITION,
 AS AMENDED BY THE BOARD OF SUPERVISORS,
 AND THE STANDARD SPECIFICATIONS FOR
 PUBLIC WORKS OF THE COUNTY OF SAN DIEGO,
 LATEST EDITION, AS AMENDED BY THE BOARD OF
 SUPERVISORS.

GENERAL REQUIREMENTS
 THE CONTRACTOR SHALL BE RESPONSIBLE FOR THE
 OBTAINING OF ALL NECESSARY PERMITS AND
 APPROVALS FROM THE APPROPRIATE AGENCIES
 AND FOR THE PROTECTION OF ALL UTILITIES
 AND STRUCTURES TO REMAIN. THE CONTRACTOR
 SHALL BE RESPONSIBLE FOR THE PROTECTION
 OF ALL UTILITIES AND STRUCTURES TO REMAIN
 AND FOR THE PROTECTION OF ALL UTILITIES
 AND STRUCTURES TO REMAIN.

CONSTRUCTION OF PAVING SURFACES - 2" AND 4" GRAVEL
 THE CONTRACTOR SHALL OBTAIN THE APPROVED SPECIFICATIONS
 FOR THE CONSTRUCTION OF PAVING SURFACES FROM THE
 BOARD OF SUPERVISORS. THE CONTRACTOR SHALL
 BE RESPONSIBLE FOR THE OBTAINING OF ALL
 NECESSARY PERMITS AND APPROVALS FROM THE
 APPROPRIATE AGENCIES AND FOR THE PROTECTION
 OF ALL UTILITIES AND STRUCTURES TO REMAIN.
 THE CONTRACTOR SHALL BE RESPONSIBLE FOR THE
 PROTECTION OF ALL UTILITIES AND STRUCTURES
 TO REMAIN AND FOR THE PROTECTION OF ALL
 UTILITIES AND STRUCTURES TO REMAIN.

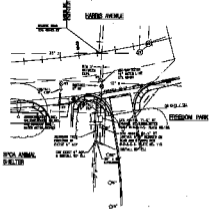
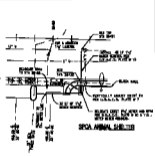
CONSTRUCTION OF ASPHALT SURFACES - ASPHALT GRADE 2
 THE CONTRACTOR SHALL OBTAIN THE APPROVED SPECIFICATIONS
 FOR THE CONSTRUCTION OF ASPHALT SURFACES FROM THE
 BOARD OF SUPERVISORS. THE CONTRACTOR SHALL
 BE RESPONSIBLE FOR THE OBTAINING OF ALL
 NECESSARY PERMITS AND APPROVALS FROM THE
 APPROPRIATE AGENCIES AND FOR THE PROTECTION
 OF ALL UTILITIES AND STRUCTURES TO REMAIN.
 THE CONTRACTOR SHALL BE RESPONSIBLE FOR THE
 PROTECTION OF ALL UTILITIES AND STRUCTURES
 TO REMAIN AND FOR THE PROTECTION OF ALL
 UTILITIES AND STRUCTURES TO REMAIN.

GOLF MAINTENANCE



ABSTRACTS FROM THE CITY PLAN
 ALL WORK TO BE DONE UNDER THE CITY PLAN SHALL BE DONE
 IN ACCORDANCE WITH THE CITY PLAN AND THE
 SPECIFICATIONS OF THE BOARD OF SUPERVISORS.
 THE CONTRACTOR SHALL BE RESPONSIBLE FOR THE
 OBTAINING OF ALL NECESSARY PERMITS AND
 APPROVALS FROM THE APPROPRIATE AGENCIES
 AND FOR THE PROTECTION OF ALL UTILITIES
 AND STRUCTURES TO REMAIN. THE CONTRACTOR
 SHALL BE RESPONSIBLE FOR THE PROTECTION
 OF ALL UTILITIES AND STRUCTURES TO REMAIN
 AND FOR THE PROTECTION OF ALL UTILITIES
 AND STRUCTURES TO REMAIN.

CONSTRUCTION OF ASPHALT GRADE 2
 THE CONTRACTOR SHALL OBTAIN THE APPROVED SPECIFICATIONS
 FOR THE CONSTRUCTION OF ASPHALT GRADE 2 FROM THE
 BOARD OF SUPERVISORS. THE CONTRACTOR SHALL
 BE RESPONSIBLE FOR THE OBTAINING OF ALL
 NECESSARY PERMITS AND APPROVALS FROM THE
 APPROPRIATE AGENCIES AND FOR THE PROTECTION
 OF ALL UTILITIES AND STRUCTURES TO REMAIN.
 THE CONTRACTOR SHALL BE RESPONSIBLE FOR THE
 PROTECTION OF ALL UTILITIES AND STRUCTURES
 TO REMAIN AND FOR THE PROTECTION OF ALL
 UTILITIES AND STRUCTURES TO REMAIN.



SPECIAL ANIMAL SHELTER

Handwritten signatures and dates.

DEPARTMENT OF PUBLIC WORKS
 COUNTY OF SAN DIEGO
 DIVISION OF PUBLIC WORKS
 1200 G STREET, SAN DIEGO, CALIF. 92101
 PHONE (619) 441-2200
 FAX (619) 441-2200

DATE: 10/15/10
 DRAWN BY: [Name]
 CHECKED BY: [Name]
 APPROVED BY: [Name]