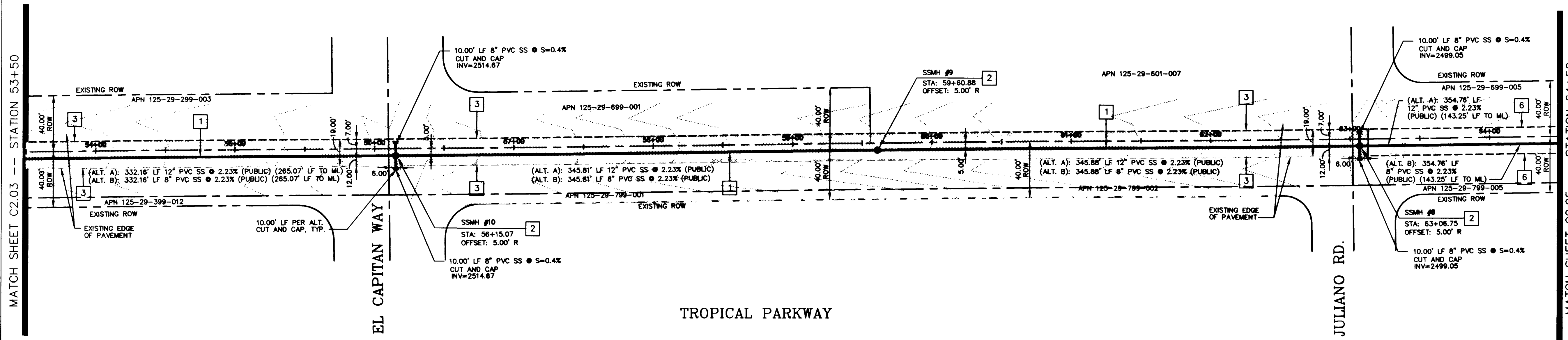


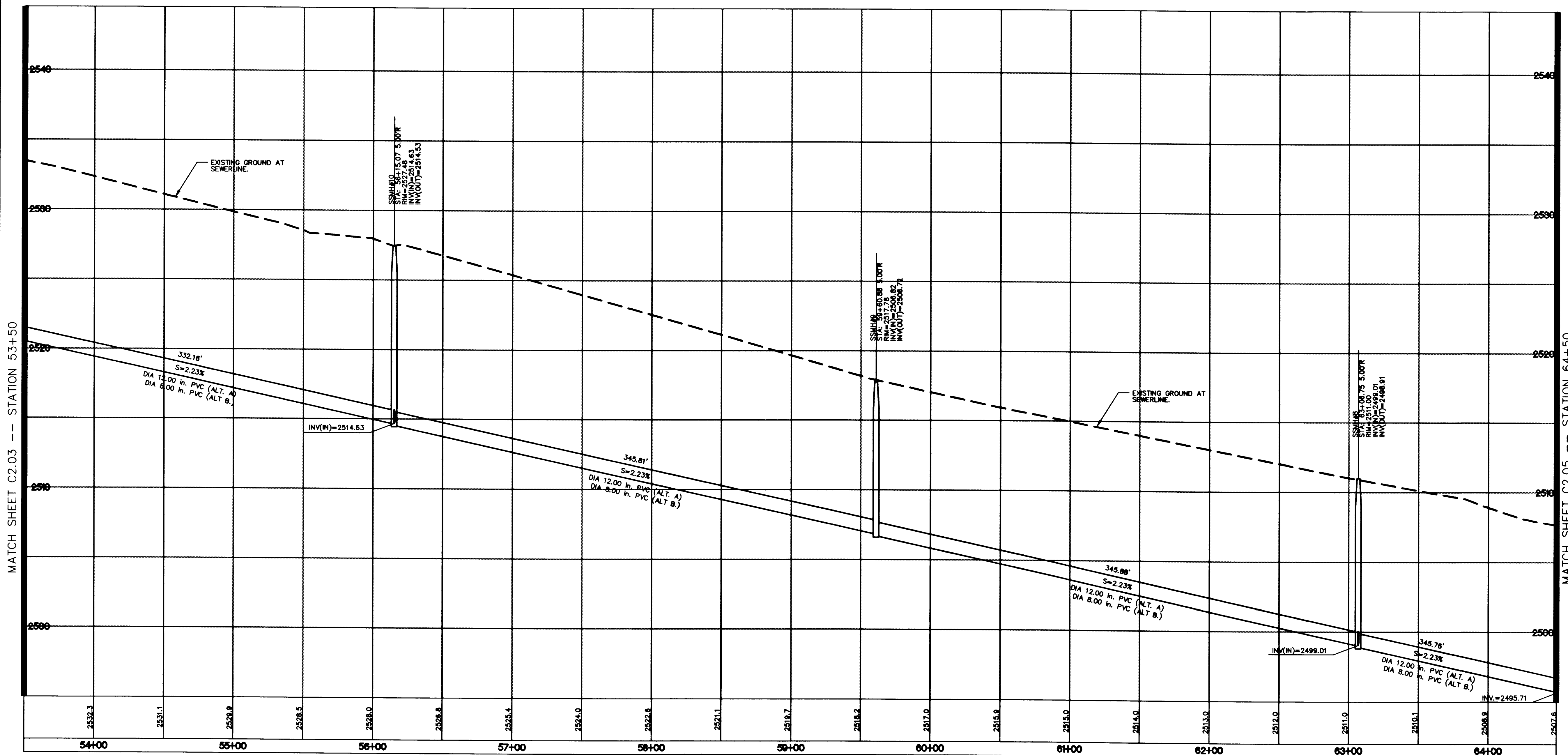
MATCH SHEET C2.03 -- STATION 53+50

MATCH SHEET C2.03 -- STATION 53+50

MATCH SHEET C2.05 -- STATION 64+50



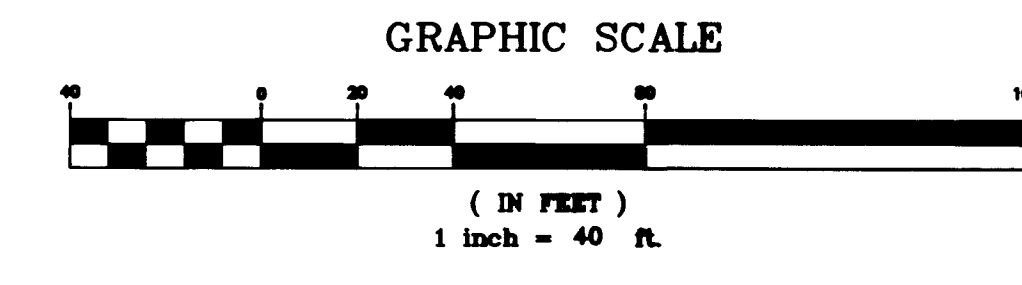
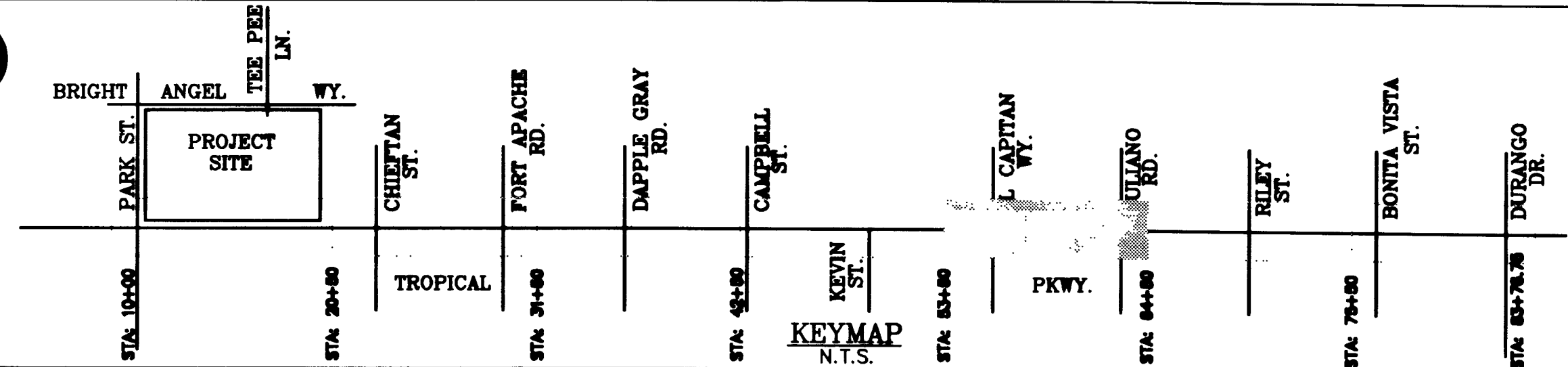
TROPICAL PARKWAY



SANITARY SEWER NOTES: (NOT ALL SANITARY SEWER NOTES ARE USED IN THIS DRAWING)

- 1 (ALT. A): INSTALL 12 INCH PVC SANITARY SEWER.
(ALT. B): INSTALL 8 INCH PVC SANITARY SEWER.
- 2 CONSTRUCT STANDARD ECCENTRIC MANHOLE (48" O.C.) PER DCSWCS DRAWING NO. SD-1; INSTALL CONCRETE COLLAR PER SD-2.
- 3 SAWCUT AND REMOVE EXISTING AC PAVT. INSTALL PIPE IN TRENCH SECTION & REPLACE PAVT. PER CCAUSD NO. 504.
- 4 12-INCH AND 8-INCH WATER LINES PER MARSHALL C. DARNELL ELEMENTARY SCHOOL IMPROVEMENT PLANS (BY NEVADA BY DESIGN) (NOT A PART).
- 5 CONSTRUCT DEEP MANHOLE W/ LANDING PER DETAIL ON SHEET C2.06.
- 6 INSTALL PIPE IN TRENCH SECTION PER CCAUSD NO. 504.
- 7 18" STORM DRAIN & 8" BLEEDER LINE PER MARSHALL C. DARNELL ELEMENTARY SCHOOL IMPROVEMENT PLANS (BY NEVADA BY DESIGN) (NOT A PART).

SCALE: 1" = 40' HORZ.
1" = 4' VERT.



REVISIONS			
REV	DESCRIPTION	DATE	BY

AVOID OVERHEAD POWER LINE CONTACT. IT'S COSTLY

AVOID CUTTING UNDERGROUND UTILITY LINES. IT'S COSTLY.

Call before you Overhead

Call before you Dig

1-702-593-6111
NEVADA POWER ENVIRONMENT AND SAFETY SERVICES DEPARTMENT

1-800-227-2600
UNDERGROUND SERVICE (USA)

DO NOT SCALE DRAWINGS

All designs, arrangements and plans indicated or presented by this drawing, as instruments of service, are owned by and the property of the ARCHITECTS. To alter these documents for any project by anyone other than the original architect is a violation of NRS 623. The plans and/or specifications shall be restricted to the original site for which they were prepared and publication thereof is expressly limited to such use. Reproduction, publication or reuse by any method in whole or in part is prohibited. None of such designs, arrangements or plans shall be used by or disclosed to any person, firm, agency, or corporation without the written permission of ARCHITECTS. Visual contact with these plans and specifications shall constitute prima facie evidence of acceptance of these restrictions.

STATE OF NEVADA
KENT B. ANDERSON
CIVIL ENGINEER
No. 6991

DESIGNED BY: [Signature]
CHECKED BY: [Signature]
DATE: [Signature]

DATE: 05-21-2001
DRAWN BY: [Signature]
CHECKED BY: [Signature]
SCALE: AS SHOWN
SHEET NO. DOCUMENT: [Signature]

NEVADA BY DESIGN

4292 S. Maryland Parkway
Las Vegas, Nevada 89119
702/498-1857
702/498-1858 - Fax

JMA ARCHITECTURE STUDIOS

10000 CENTENNIAL CROSS DRIVE LAS VEGAS, NEVADA 89135

CLARK COUNTY SCHOOL DISTRICT
CONSTRUCTION MANAGEMENT
4828 PEARL ST.
LAS VEGAS, NEVADA 89121

MARSHALL C. DARNELL ELEMENTARY SCHOOL
(AKA TROPICAL / TEE PEE ELEMENTARY SCHOOL)

SEWER PLAN AND PROFILE STA: 53+50 - 64+50

SHEET NO. C2.04

SHEET 08 of 10
DRAWING NUMBER 715-133