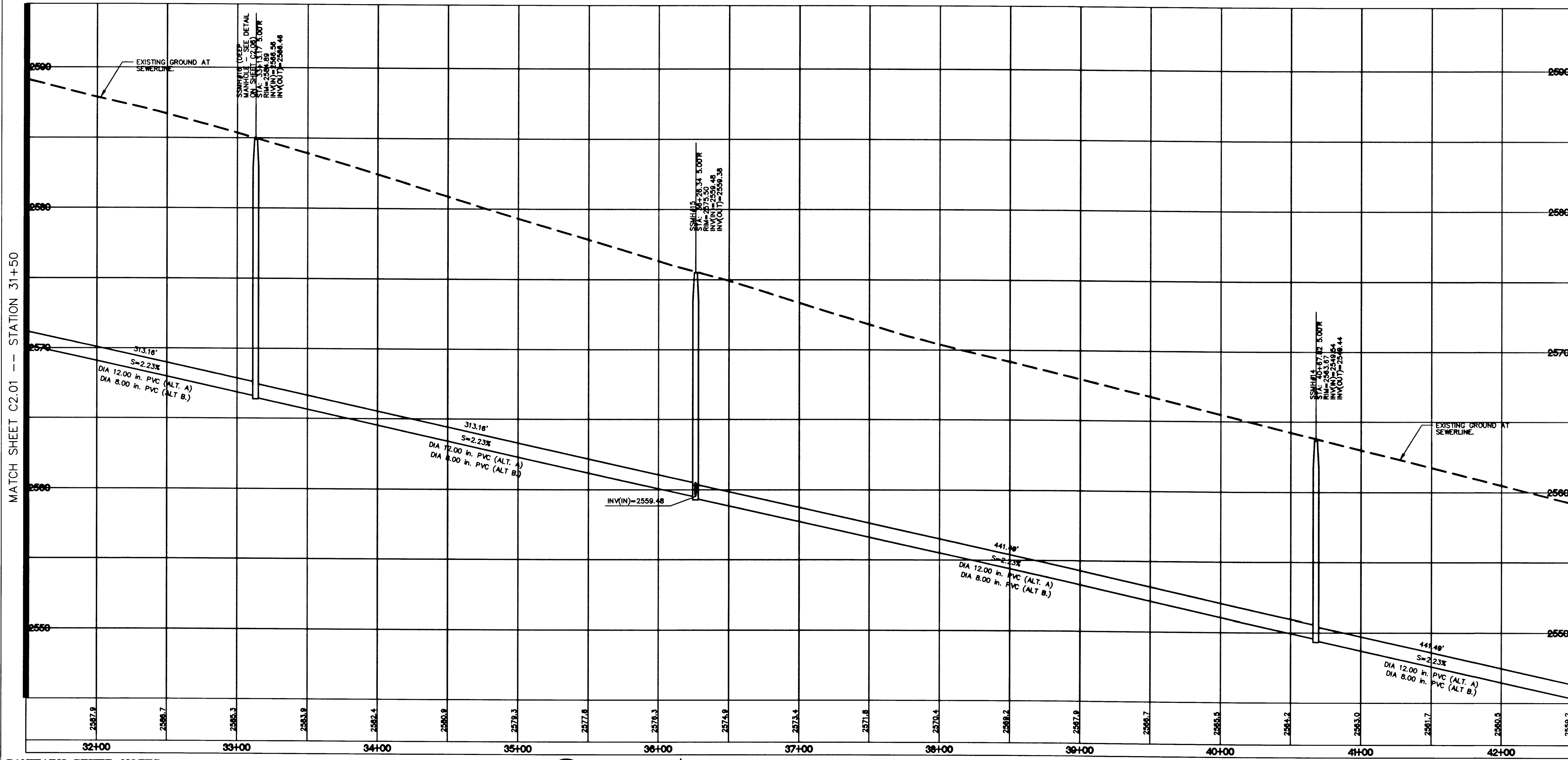
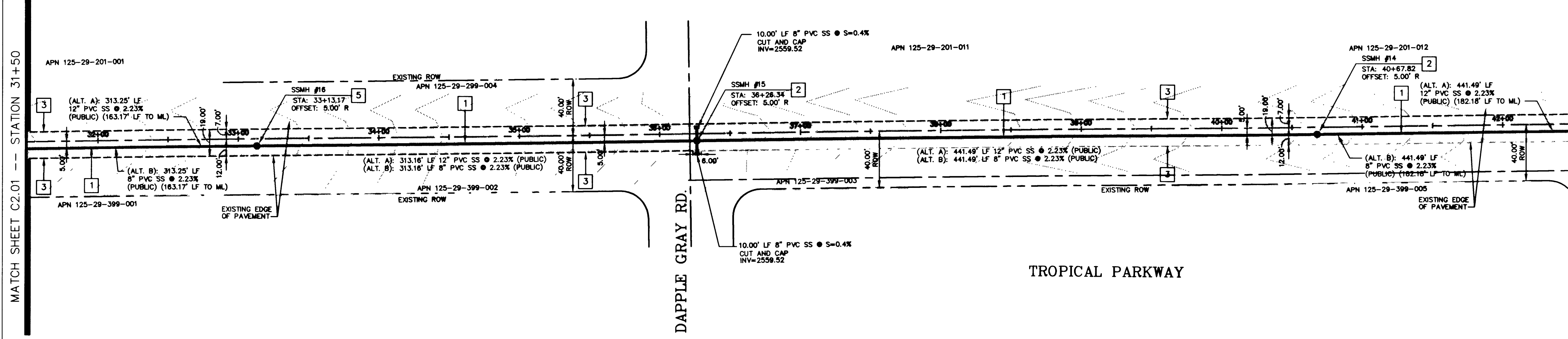


MATCH SHEET C2.01 -- STATION 31+50

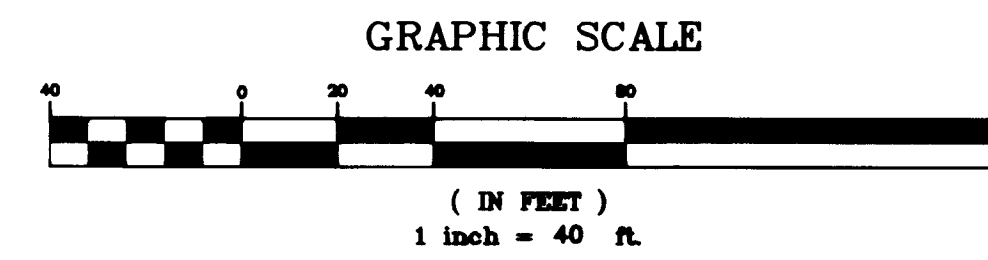
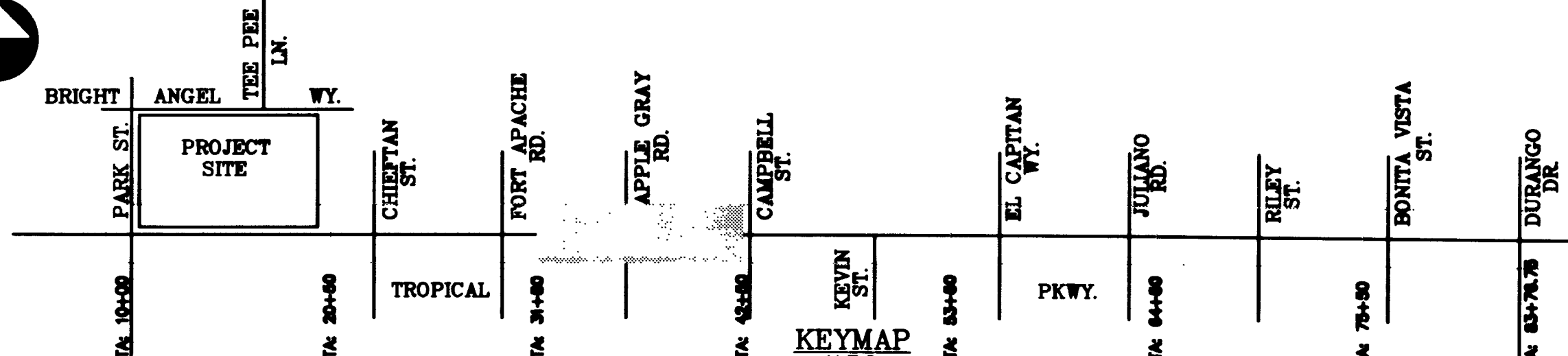
MATCH SHEET C2.01 -- STATION 31+50

MATCH SHEET C2.03 -- STATION 42+50



- SANITARY SEWER NOTES:** (NOT ALL SANITARY SEWER NOTES ARE USED IN THIS DRAWING)
- (ALT. A): INSTALL 12 INCH PVC SANITARY SEWER.  
(ALT. B): INSTALL 8 INCH PVC SANITARY SEWER.
  - CONSTRUCT STANDARD ECCENTRIC MANHOLE (48" O.C.) PER DCSWCS DRAWING NO. SD-1; INSTALL CONCRETE COLLAR PER SD-2.
  - SAWCUT AND REMOVE EXISTING AC PVMT. INSTALL PIPE IN TRENCH SECTION & REPLACE PVMT. PER CCAUSD NO. 504.
  - 12-INCH AND 8-INCH WATER LINES PER MARSHALL C. DARNELL ELEMENTARY SCHOOL IMPROVEMENT PLANS (BY NEVADA BY DESIGN) (NOT A PART).
  - CONSTRUCT DEEP MANHOLE W/ LANDING PER DETAIL ON SHEET C2.06.
  - INSTALL PIPE IN TRENCH SECTION PER CCAUSD NO. 504.
  - 18" STORM DRAIN & 8" BLEEDER LINE PER MARSHALL C. DARNELL ELEMENTARY SCHOOL IMPROVEMENT PLANS (BY NEVADA BY DESIGN) (NOT A PART).

SCALE: 1" = 40' HORIZ.  
1" = 4' VERT.



REVISIONS			
REV	DESCRIPTION	DATE	BY

© JMA ARCHITECTURE STUDIOS 1999

AVOID OVERHEAD POWER LINE CONTACT. IT'S COSTLY.  
AVOID CUTTING UNDERGROUND UTILITY LINES. IT'S COSTLY.

**Call before you Overhead**  
1-702-593-6111  
NEVADA POWER ENVIRONMENT AND SAFETY SERVICES DEPARTMENT

**Call before you Dig**  
1-800-227-2600  
UNDERGROUND SERVICE (USA)

DO NOT SCALE DRAWINGS

All designs, arrangements and plans indicated or presented by this drawing, as instruments of service, are owned by and the property of the ARCHITECTS. To alter these documents for any project by anyone other than the original architect is a violation of NRS 623. The plans and/or specifications shall be restricted to the original site for which they were prepared and publication thereof is expressly limited to such use. Reproduction, publication or reuse by any method in whole or in part, is prohibited. None of such designs, arrangements or plans shall be used by or disclosed to any person, firm, agency, or corporation without the written permission of ARCHITECTS. Visual contact with these plans and specifications shall constitute prima facie evidence of acceptance of these restrictions.

STATE OF NEVADA  
SEAL  
GENT B. ANDERSON  
CIVIL ENGINEER  
No. 8931

DESIGNED BY  
CHECKED BY  
DATE  
DATE 03-21-2001  
DRAWN BY  
CHECKED BY  
DATE  
SCALE  
SUBMITTAL NO. 000039

NEVADA BY DESIGN  
4291 S. Maryland Parkway  
Las Vegas, Nevada 89111  
702/438-1550 - Fax  
702/438-1550 - Tel

JMA ARCHITECTURE STUDIOS  
18100 CENTENNIAL CROSS DRIVE  
LAS VEGAS, NEVADA 89130

CLARK COUNTY SCHOOL DISTRICT  
CONSTRUCTION MANAGEMENT  
4828 PEARL ST.  
LAS VEGAS, NEVADA 89121

MARSHALL C. DARNELL ELEMENTARY SCHOOL  
(AKA TROPICAL / TEE PEE ELEMENTARY SCHOOL)

SEWER PLAN AND PROFILE STA: 31+50 - 42+50

SHEET NO.  
**C2.02**  
SHEET 06 of 10  
DRAWING NUMBER  
715-133