



REVISIONS

CONSULTANT

1771 E. FLAVINO ROAD, #103B
LAS VEGAS, NEVADA 89119-5136
PH: (702) 893-4668
FAX: (702) 893-4668
www.cellabarr.com
lasvegas@cellabarr.com

CELLA BARR ASSOCIATES, INC.
ENGINEERING PLANNING
LANDSCAPE ARCHITECTURE
WATER RESOURCES
SURVEYING TRANSPORTATION

OFFICES IN ARIZONA
CALIFORNIA & NEVADA

DEPARTMENT OF PUBLIC WORKS
NORTHWEST SOCCER COMPLEX
ELECTRICAL DETAILS

DEPARTMENT OF PUBLIC WORKS
ARCHITECTURAL SERVICES
400 EAST STEWART AVENUE
LAS VEGAS, NEVADA 89101
PHONE: (702) 229-6535
FAX: (702) 382-3232
TDD: (702) 386-9108

PROJECT MANAGER
CLAIR M. LEWIS, ASLA

DRAWN BY
DSM/TRP

FILE
939/DETAILS

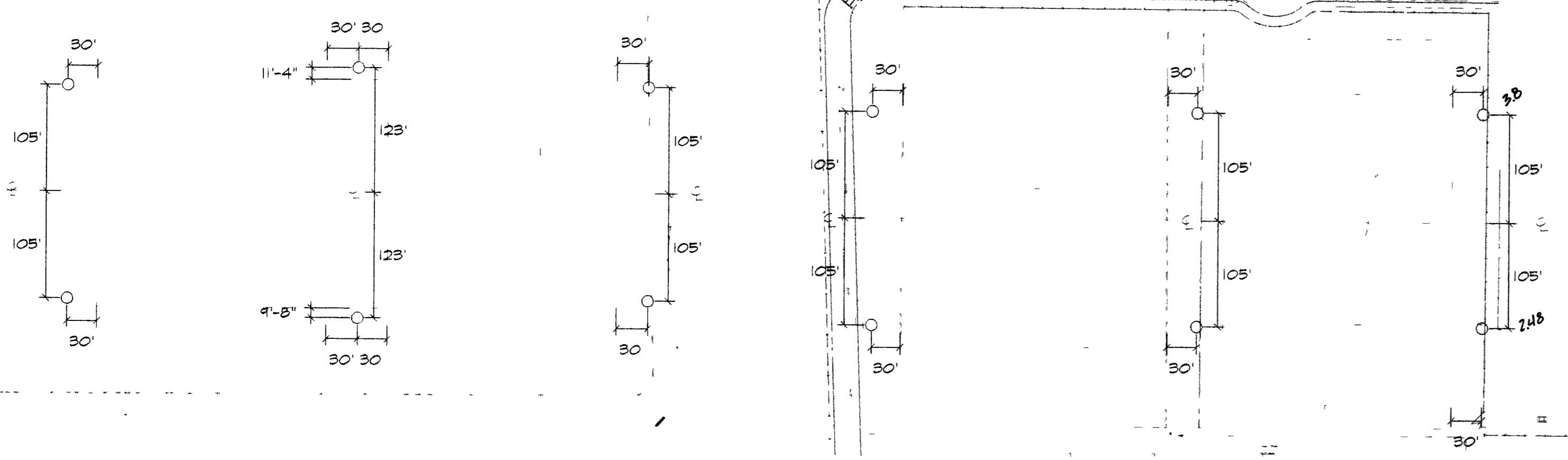
DATE
8/99

SCALE
AS SHOWN

PROJECT
NORTHWEST SOCCER FIELD

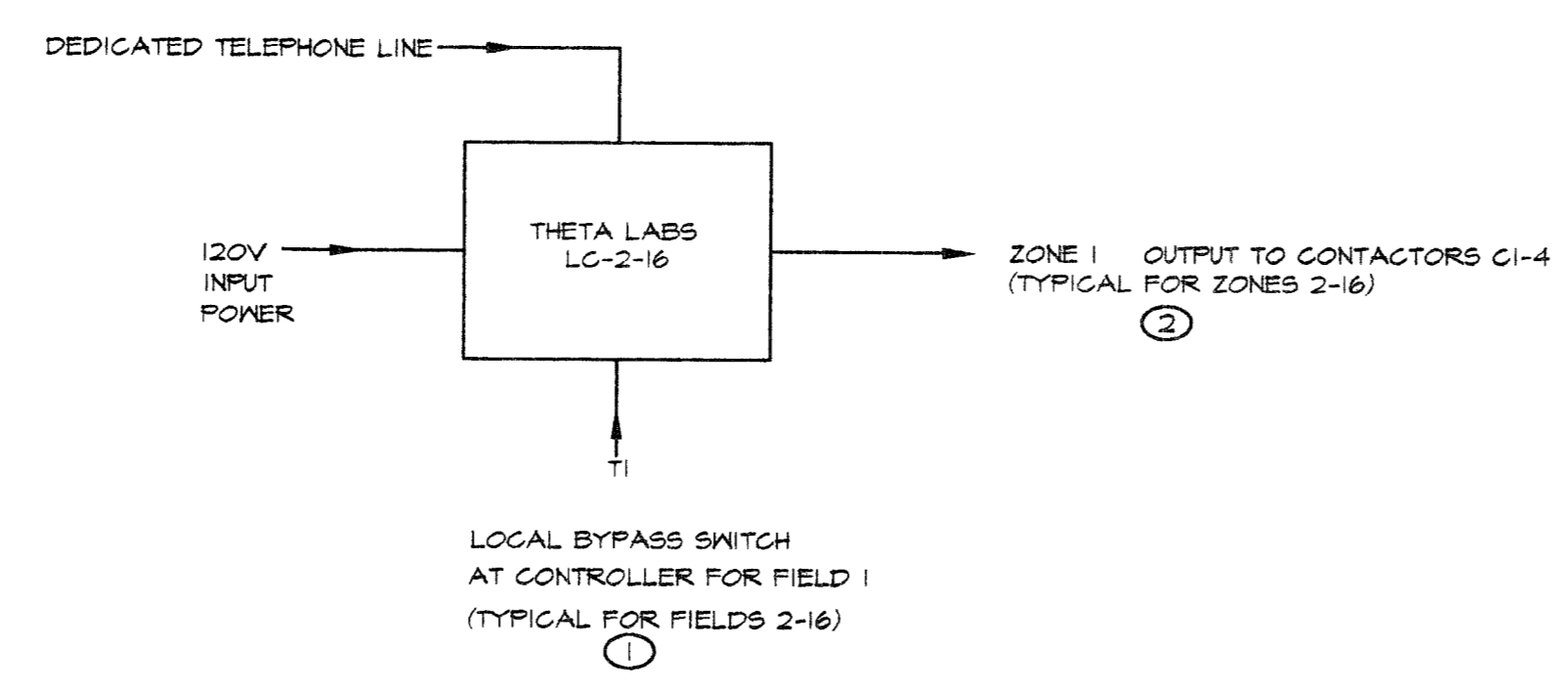
SHEET NO.

E-3
SHEET 22 OF 26



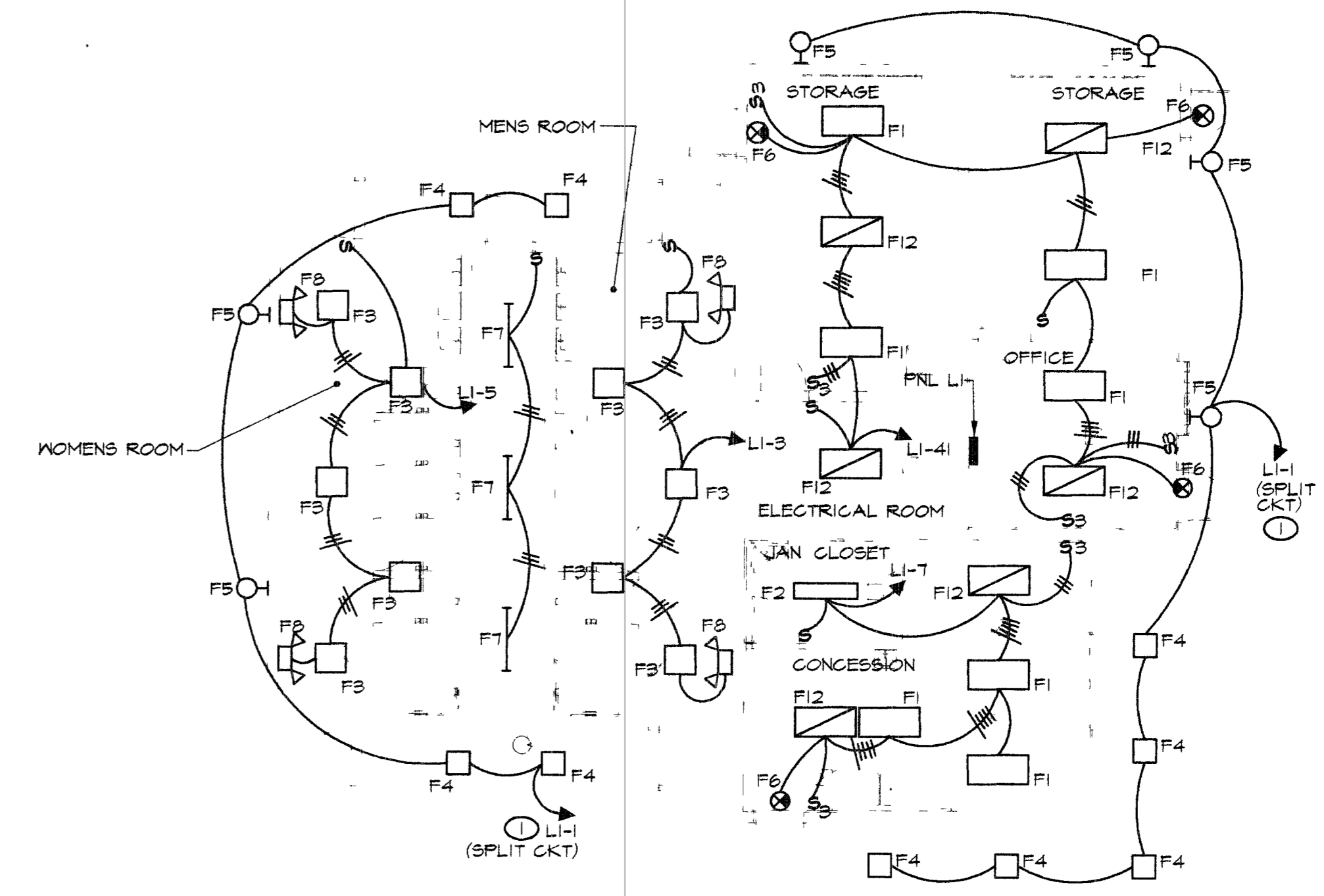
5
E-3 SOCCER POLE LOCATION DETAIL
(TYPICAL FOR FIELDS 3-10)
SCALE: 1"=100'

3
E-3 SOCCER POLE LOCATION DETAIL
SCALE: 1"=100'



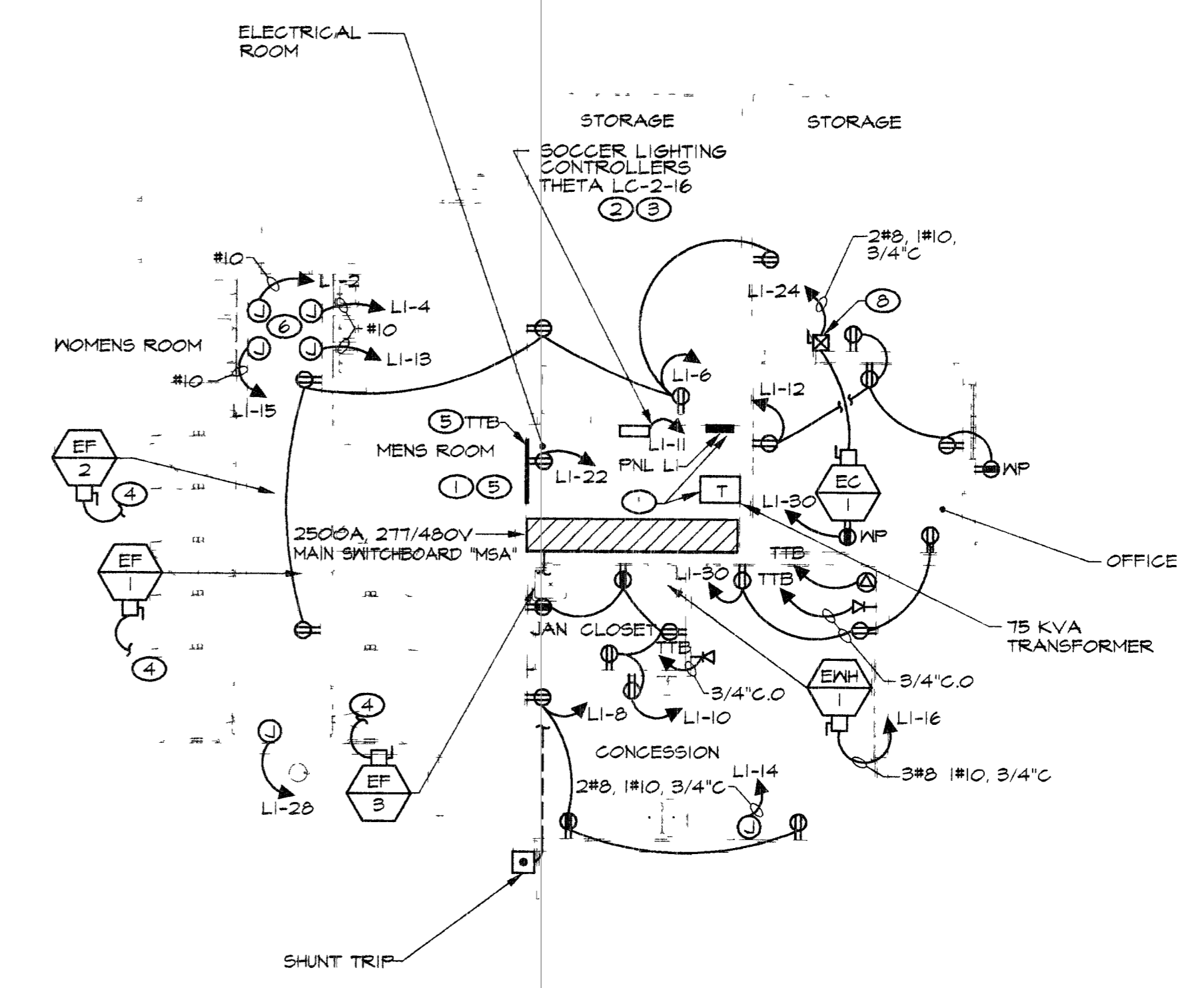
4
E-3 SOCCER LIGHTING CONTROL DIAGRAM
NOT TO SCALE

- NOTES:**
- 1 PROVIDE ONE BYPASS SWITCH FOR EACH FIELD
 - 2 SEE CONTACTOR AND CONTROL SCHEDULES AND ONELINE DIAGRAM
 - 3 PROVIDE SLAVE RELAY IF BURDEN ON THE 4 FIELD COILS EXCEEDS 3 AMPS



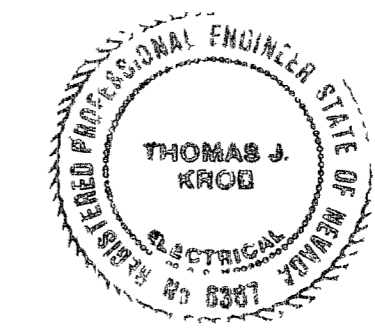
1
E-3 ENLARGED RESTROOM BUILDING
ELECTRICAL LIGHTING PLAN
SCALE: 1/8"=1'-0"

- NOTES:**
- 1 ROUTE THROUGH CONTACTOR SEE CONTACTOR AND CONTROL SCHEDULES.



2
E-3 ENLARGED RESTROOM BUILDING
ELECTRICAL POWER PLAN
SCALE: 1/8"=1'-0"

- NOTES:**
- 1 SEE ONELINE DIAGRAM FOR CONDUIT AND WIRE SIZES FOR PANELS AND TRANSFORMERS.
 - 2 SOCCER LIGHTS SHALL BE CONTROLLED BY THETA LAB LG-2-16. PROVIDE (1) DEDICATED TELEPHONE CONDUIT TO CONTROLLER LOCATION FROM TTB.
 - 3 CONTACTORS AND THETA LAB CONTROLLER UNIT SHALL BE LOCATED IN ELECTRICAL ROOM.
 - 4 CONNECT TO ROOM LIGHTING CIRCUIT FOR SWITCHING SEE PANEL LI SCHEDULE.
 - 5 SEE SITE PLAN FOR FEEDER CONDUIT ROUTING FROM UTILITY SERVICE POINT. PROVIDE (2) 2" C/O FROM TTB TO PUMP ENCLOSURE FOR IRRIGATION CONTROLLERS.
 - 6 PROVIDE J-BOX FOR HAND DRYERS. VERIFY EXACT LOCATION WITH CIVIL ENGINEER/ARCHITECT PRIOR TO ROUGH-IN.
 - 7 SEE MECHANICAL DRAWINGS MO-0, MI-0 AND PLUMBING DRAWINGS PI-0, PI-0 FOR ADDITIONAL INFORMATION.
 - 8 PROVIDE SIZE 1 MANUAL MOTOR STARTER IN NEMA 1 ENCLOSURE.



TJKROB CONSULTING ENGINEERS, INC.
7151 CASCADE VALLEY COURT SUITE 200
LAS VEGAS, NEVADA 89128
(702) 871-3621
ELECTRICAL ENGINEERING

9/18/99