

CONSTRUCTION NOTES

- EXISTING IMPROVEMENTS ON BUSINESS PARK COURT PER BROOKHOLLOW B.H.P., PHASE III.
- ALL WATER LINES 4" OR GREATER TO BE CL. 200, C900 PVC. ALL WATERLINES SMALLER THAN 4" TO BE SCH. 40 PVC.
- ALL SANITARY SEWER LINES TO BE SDR-35 PVC.
- CONTRACTOR TO FIELD VERIFY LOCATION OF ALL UTILITY STUBS PRIOR TO CONSTRUCTION.
- MINIMUM FINISHED FLOOR ELEVATION PER PLANS FOR BROOKHOLLOW BUSINESS PARK, PHASE III = 38.5.

EXISTING		PROPOSED	
---	RIGHT-OF-WAY	---	RIGHT-OF-WAY
---	CENTERLINE	---	CENTERLINE
---	WATER LINE	---	WATER LINE
---	SANITARY SEWER LINE	---	SANITARY SEWER LINE
---	GAS LINE	---	GAS LINE
---	STORM DRAIN	---	STORM DRAIN
---	POWER LINE/POWER POLE	---	POWER LINE/POWER POLE
---	TELEPHONE LINE	---	TELEPHONE LINE
---	FIRE HYDRANT	---	FIRE HYDRANT
---	METERS/PULL BOXES	---	METERS/PULL BOXES
---	REDUCER	---	REDUCER
---	MANHOLE	---	MANHOLE
---	CLEANOUT	---	CLEANOUT
---	CONTOUR	---	CONTOUR
---	A.C. PAVING	---	A.C. PAVING
---	TYPE "A" CURB & GUTTER	---	TYPE "A" CURB & GUTTER
---	TYPE "B" CURB	---	TYPE "B" CURB
---	CONCRETE	---	CONCRETE

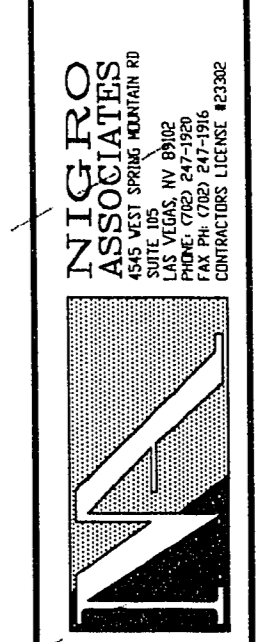
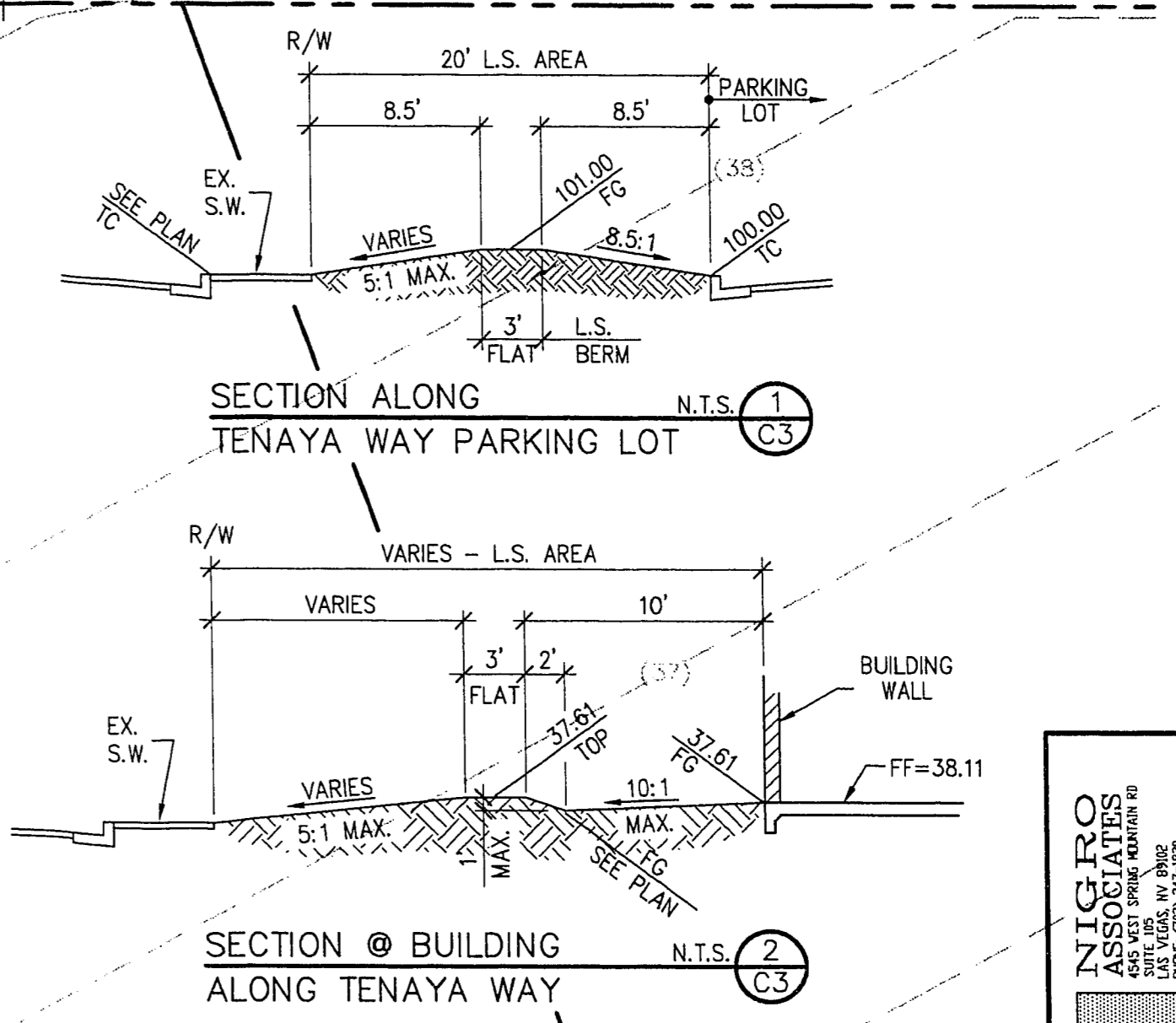
- GRADING NOTES**
- SLOPES 4:1 OR STEEPER AND FINE-GRAINED MATERIALS THAT HAVE BEEN DISTURBED (SANDY AND SILTY MATERIALS) SHOULD BE PROTECTED WITH BURLAP OR OTHER EROSION CONTROL FABRIC/MATERIAL, UNLESS OTHERWISE SPECIFIED BY LANDSCAPE DRAWINGS AND SPECIFICATIONS OR THE SOILS REPORT.
 - CONTRACTOR SHALL DETERMINE HIS OWN FOOTING OR BASEMENT EXCAVATION QUANTITIES, EVEN THOUGH SHOWN ON ROUGH GRADING PLANS. ADDITIONALLY, STRUCTURE BACKFILL COSTS SHOULD BE INCLUDED IN THE COST OF THE STRUCTURE, UNLESS OTHERWISE SPECIFIED IN THE CONTRACT DOCUMENTS.
 - CONTRACTOR SHALL NOTIFY THE ENGINEER WITHIN 24 HOURS OF OMISSIONS AND ERRORS DISCOVERED ON PLANS. THE ENGINEER WILL NOT BE RESPONSIBLE FOR ANY "CORRECTIVE" WORK DONE BY OTHERS.
 - CONTRACTOR TO ENSURE POSITIVE DRAINAGE. NO PONDING ALLOWED.

BASIS OF BEARINGS:
THE EAST LINE OF THE SOUTHWEST QUARTER OF SECTION 15, TOWNSHIP 20 SOUTH, RANGE 60 EAST, M.D.M., WHICH BEARS SOUTH 00°15'00" EAST AS SHOWN BY MAP IN THE OFFICE OF THE CLARK COUNTY, NEVADA RECORDER IN FILE 42 OF SURVEYS ON PAGE 32.

BENCHMARK
CLV-BENCHMARK NO. 2 0LV022NNE6 RIVET AND PLATE IN TOP OF CURB, SW RETURN OF SMOKE RANCH ROAD AND ROCK SPRINGS DRIVE.
ELEVATION=2347.64

I HEREBY CERTIFY THAT THIS GRADING PLAN CONFORMS TO THE APPROVED DRAINAGE STUDY ON FILE AT THE CITY OF LAS VEGAS.

Mark L. Hedge 1-19-96
MARK L. HEDGE P.E. #8445 DATE



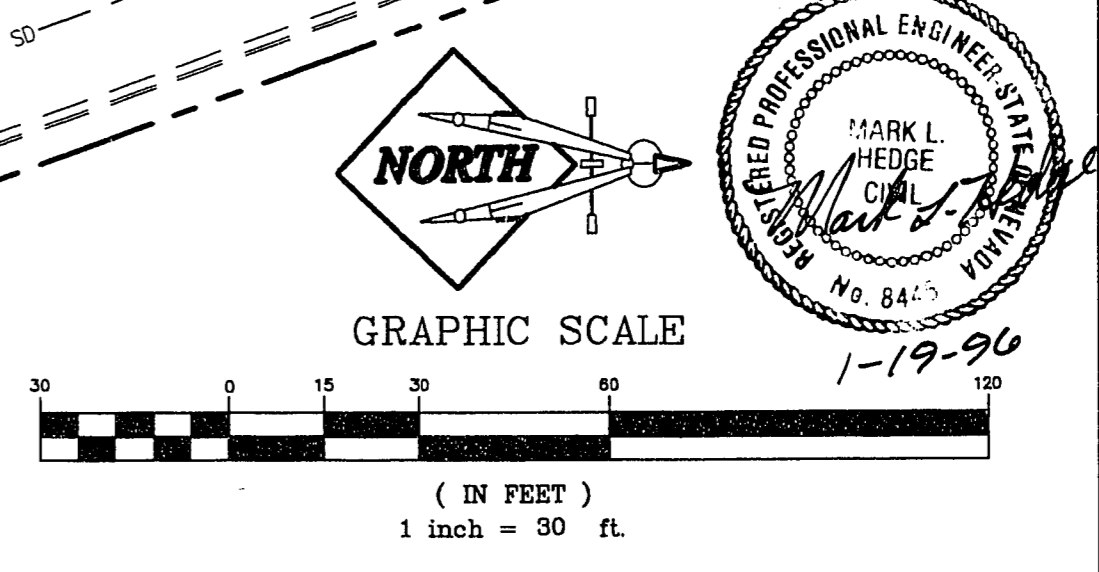
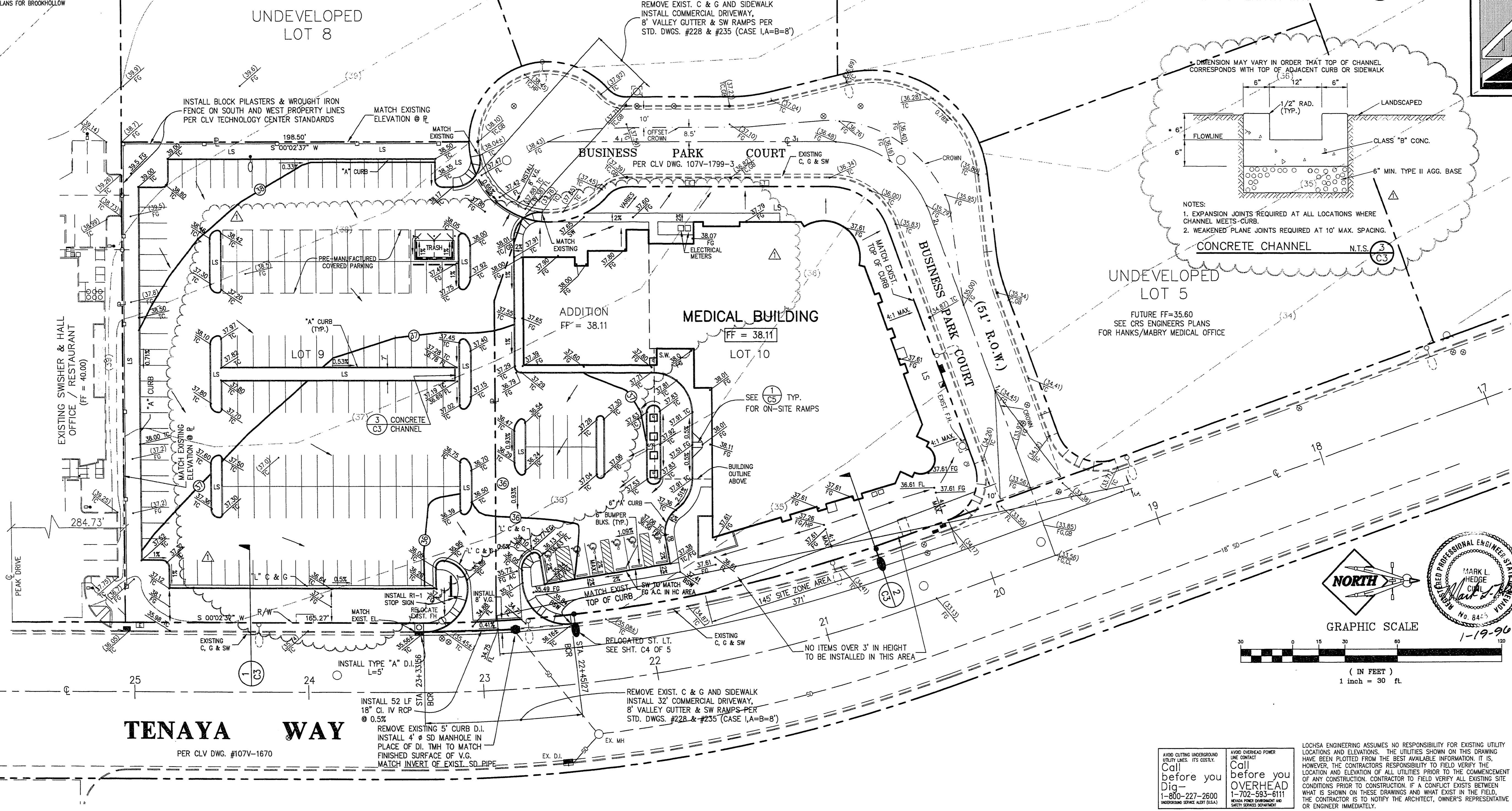
LOCHSA ENGINEERING
3111 S. Valley View Blvd.
Suite G-105
Las Vegas, NV 89102
Tel: (702) 365-9317
Fax: (702) 365-9317

MOUNTAIN VIEW MEDICAL PLAZA

GRADING PLAN

REV. NO.	DESCRIPTION	DATE
1	REVISED PARKING LAYOUT AND BUILDING FOOTPRINT	4/17/96

DATE: 1-18-96
JOB No.: 1017.00
DESIGN BY: MLH
DRAWN BY: MCC
SHEET No.: C3
SHEET 3 of 5



AVOID CUTTING UNDERGROUND UTILITY LINES. ITS COSTLY!
Call before you Dig- 1-800-227-2600 (NEVADA SERVICE ALERT 811)

AVOID OVERHEAD POWER LINE CONTACT!
Call before you OVERHEAD- 1-702-593-6111 (NEVADA POWER OVERHEAD 811 SAFETY SERVICE 811-46)

LOCHSA ENGINEERING ASSUMES NO RESPONSIBILITY FOR EXISTING UTILITY LOCATIONS AND ELEVATIONS. THE UTILITIES SHOWN ON THIS DRAWING HAVE BEEN PLOTTED FROM THE BEST AVAILABLE INFORMATION. IT IS HOWEVER, THE CONTRACTORS RESPONSIBILITY TO FIELD VERIFY THE LOCATION AND ELEVATION OF ALL UTILITIES PRIOR TO THE COMMENCEMENT OF ANY CONSTRUCTION. CONTRACTOR TO FIELD VERIFY ALL EXISTING SITE CONDITIONS PRIOR TO CONSTRUCTION. IF A CONFLICT EXISTS BETWEEN WHAT IS SHOWN ON THESE DRAWINGS AND WHAT EXISTS IN THE FIELD, THE CONTRACTOR IS TO NOTIFY THE ARCHITECT, OWNER'S REPRESENTATIVE OR ENGINEER IMMEDIATELY.

78-2-17 107-V2458