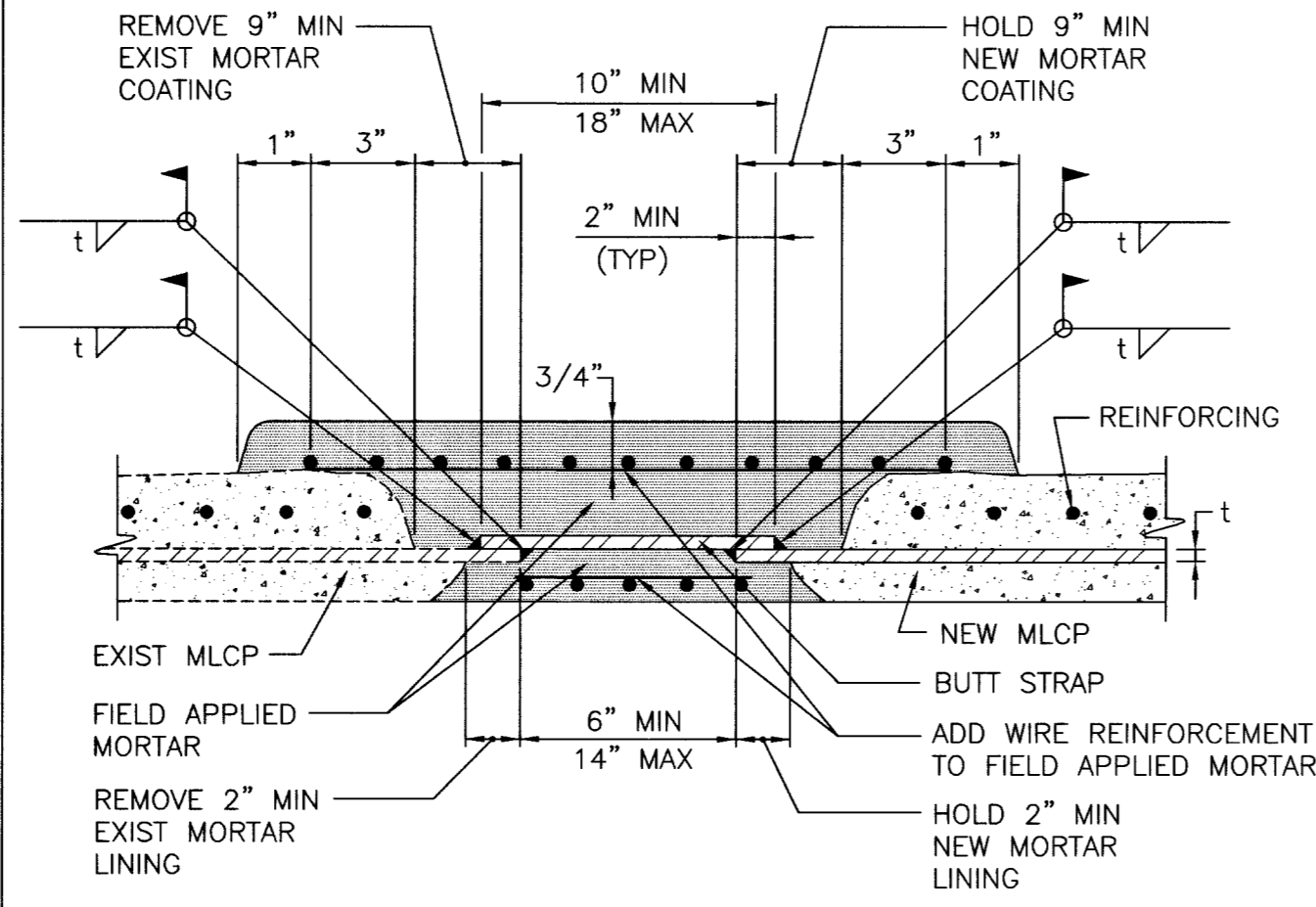


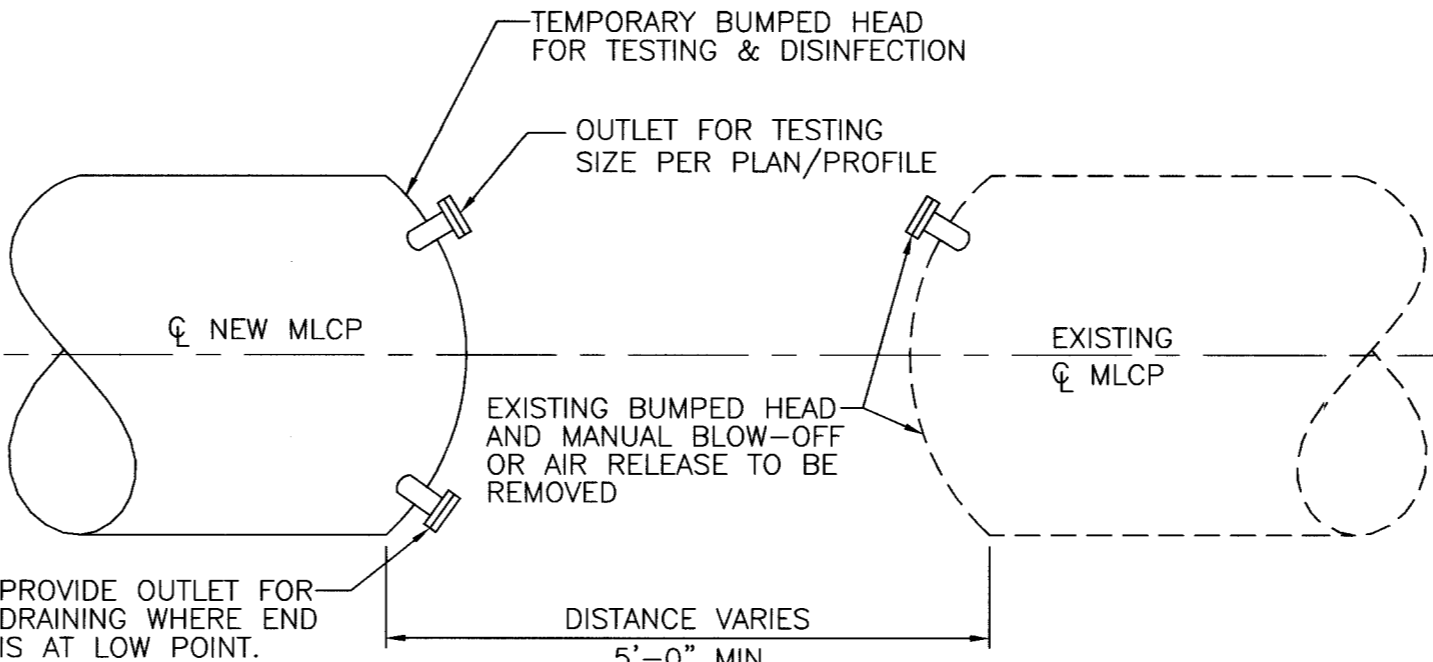
- NOTES**
1. SEE SPECS SEC 02511 FOR MORTAR LINED AND COATED STEEL PIPE
  2. WELD OUTSIDE ON PIPE SMALLER THAN 36". OPTIONAL INSIDE OR OUTSIDE ON PIPE GREATER THAN OR EQUAL TO 36"

**LAP - WELDED SLIP JOINT ALTERNATE 'A' FIELD WELDED** (1)  
NOT TO SCALE

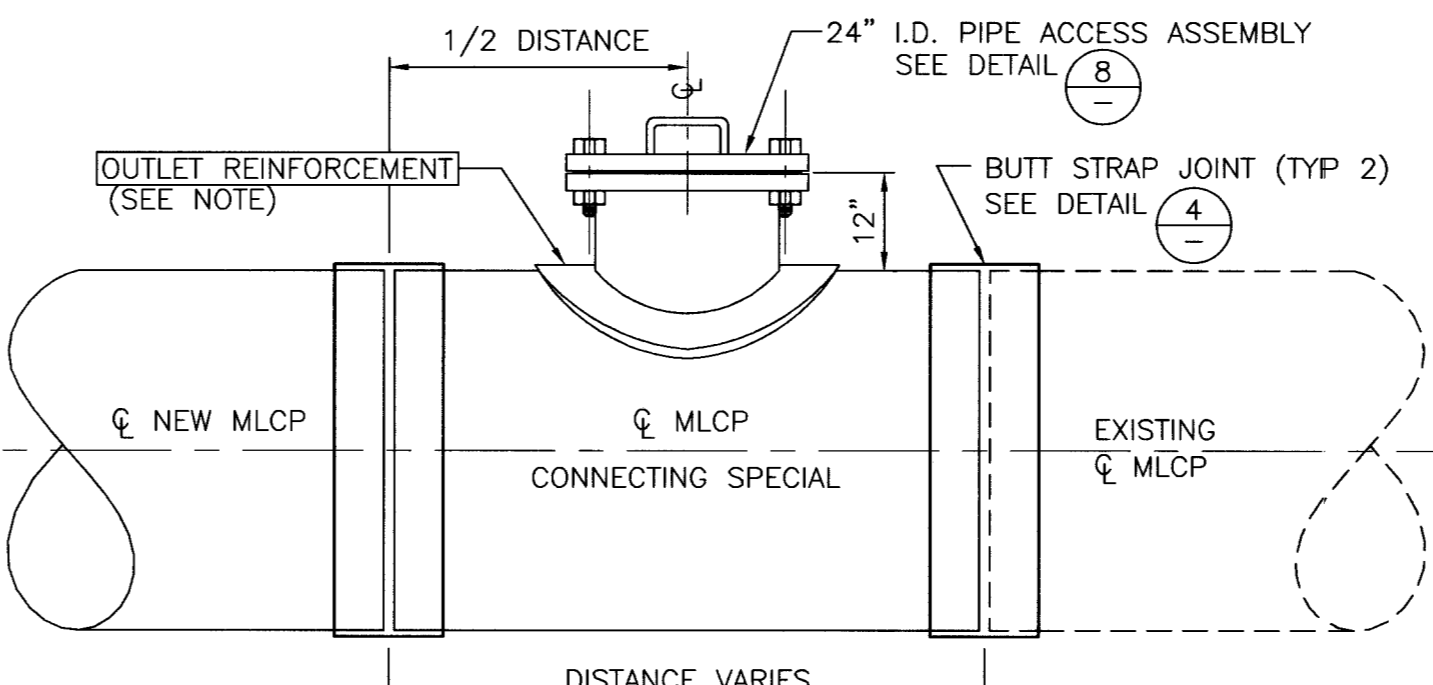


- NOTES**
1. SEE SPECS SEC 02511 FOR MORTAR LINED AND COATED STEEL PIPE

**BUTT STRAP JOINT AT MLCP CONNECTIONS TO EXISTING MLCP** (4)  
NOT TO SCALE



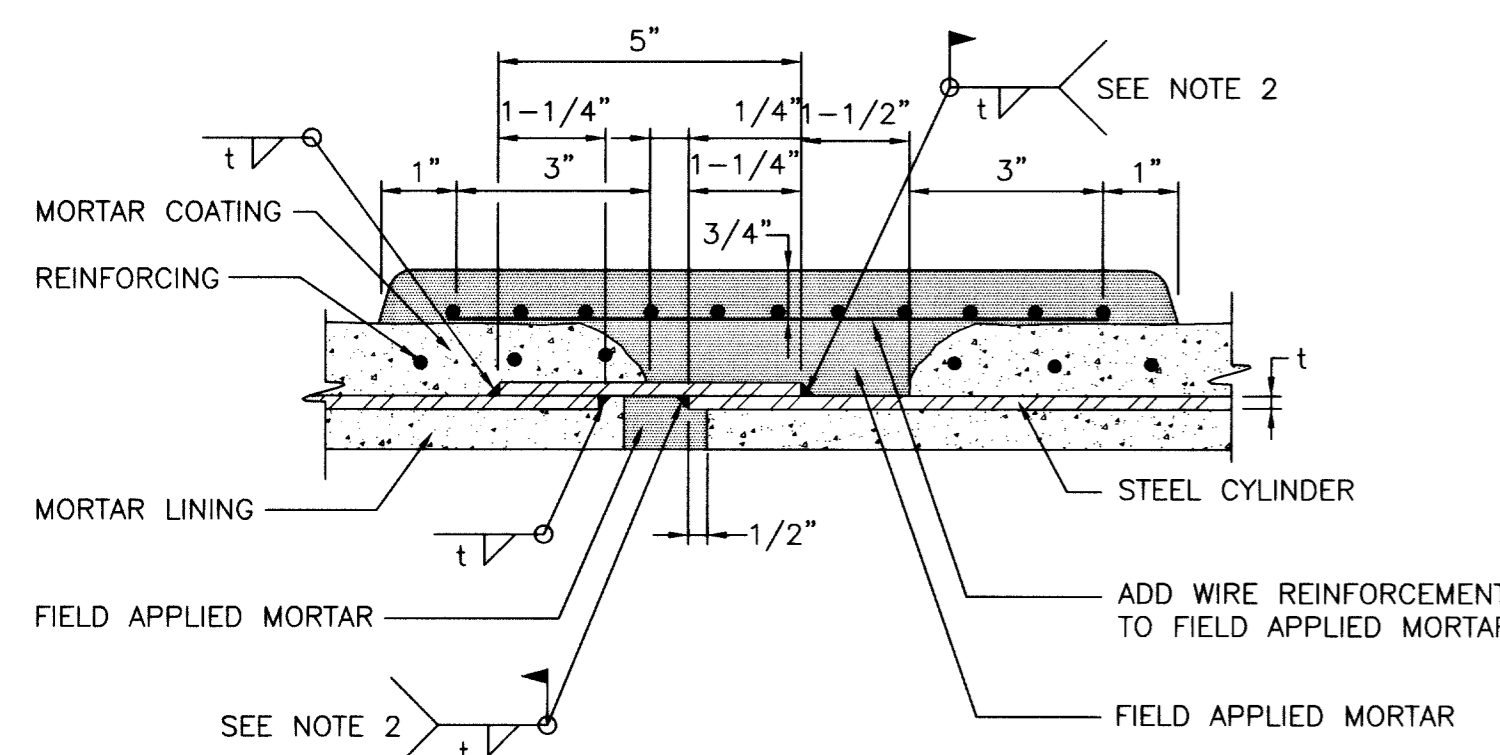
**PROFILE BEFORE CONNECTION**



**PROFILE AFTER CONNECTION**

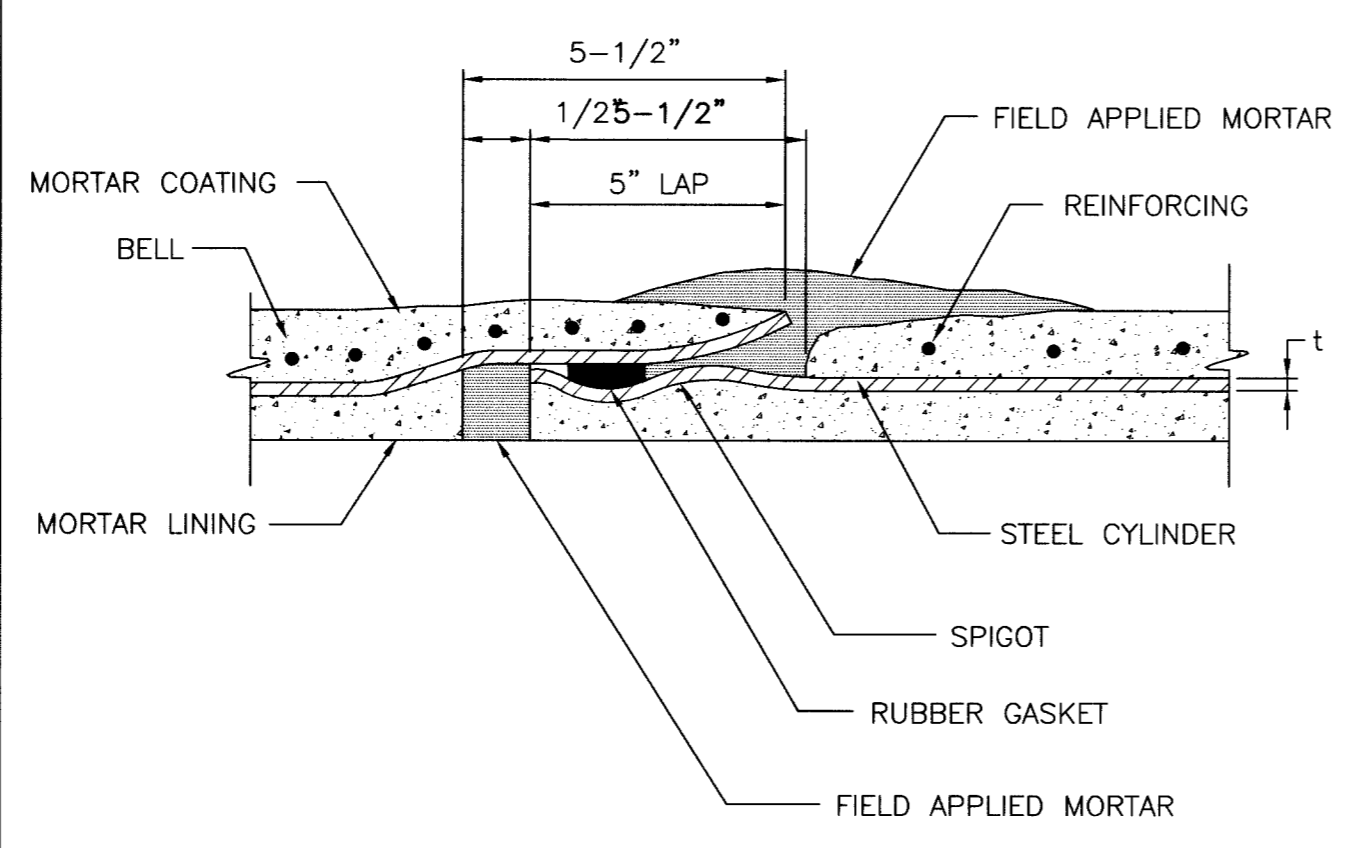
- NOTE**
1. OUTLET REINFORCEMENT SHALL BE DETERMINED PER AWWA M11 DESIGN METHOD.
  2. SEE SPECS SEC 02511 FOR MORTAR LINED AND COATED STEEL PIPE

**CONNECTION OF NEW PIPE TO EXISTING PIPE FOR MLCP ONLY** (7)  
NOT TO SCALE



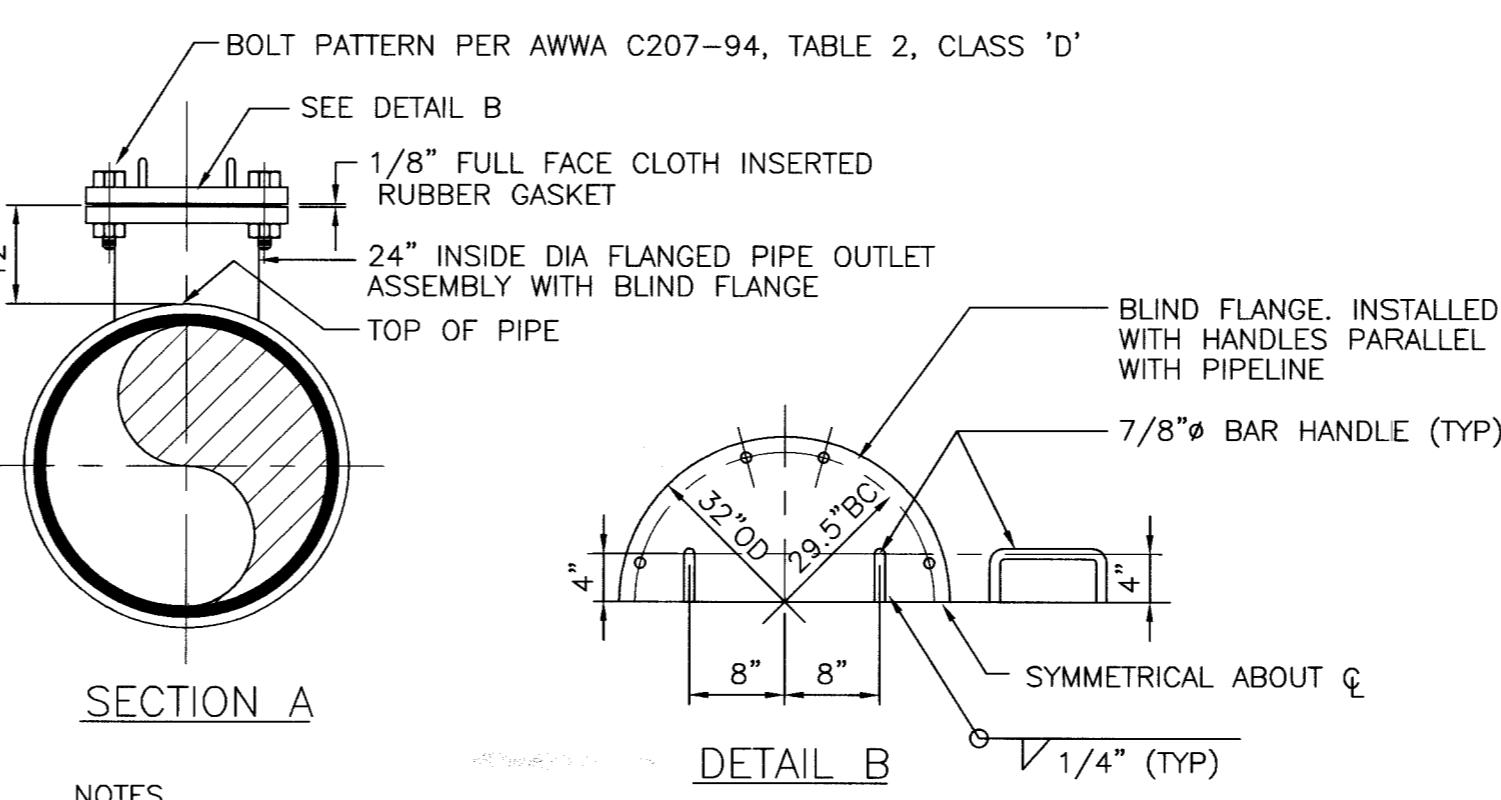
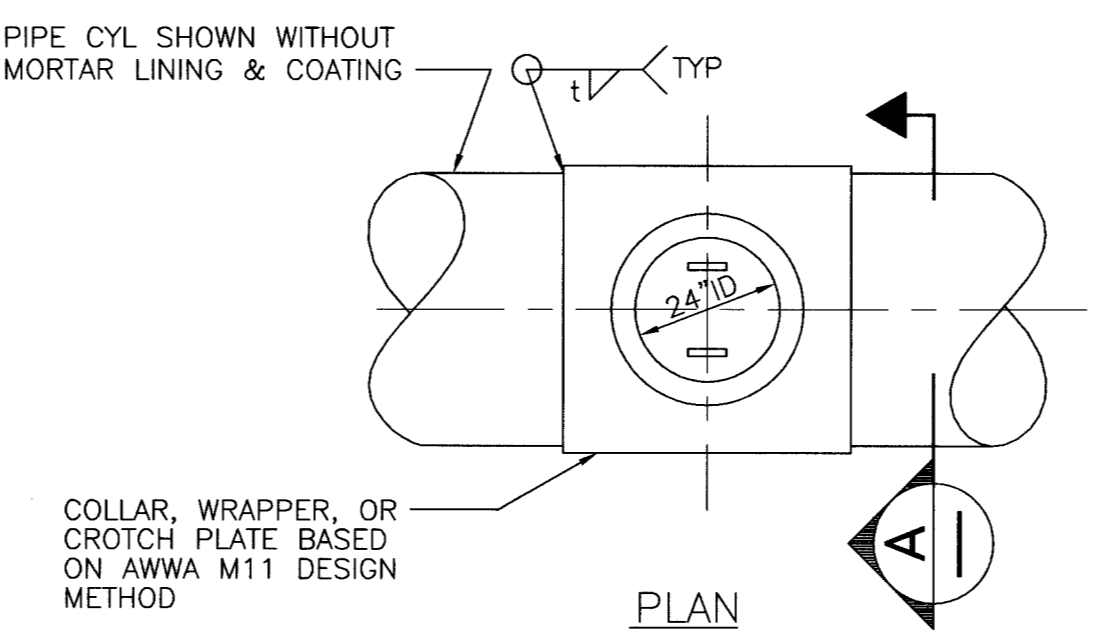
- NOTES**
1. SEE SPECS SEC 02511 FOR MORTAR LINED AND COATED STEEL PIPE
  2. WELD OUTSIDE ON PIPE SMALLER THAN 36". OPTIONAL INSIDE OR OUTSIDE ON PIPE GREATER THAN OR EQUAL TO 36"

**LAP - WELDED SLIP JOINT ALTERNATE 'B' FIELD WELDED** (2)  
NOT TO SCALE



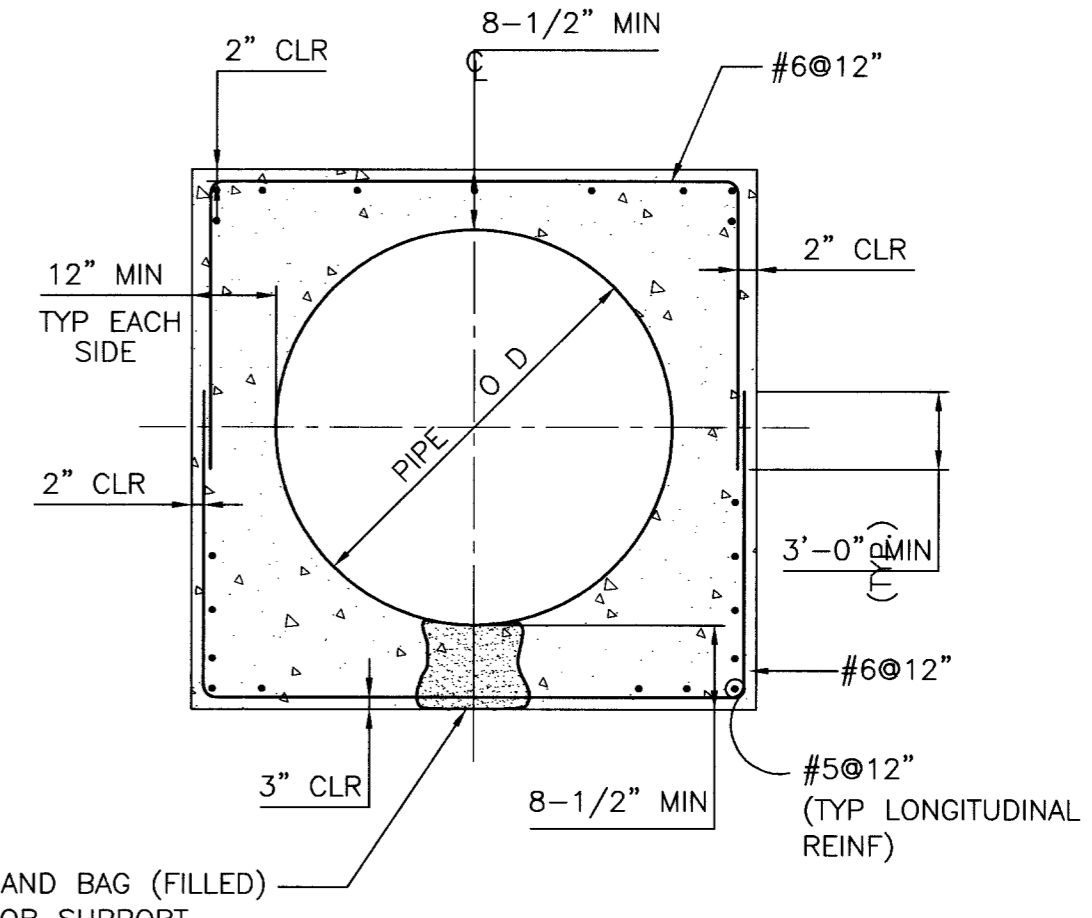
- NOTE**
1. SEE SPECS SEC 02511 FOR MORTAR LINED AND COATED STEEL PIPE

**ROLLED - GROOVE RUBBER GASKET JOINT** (5)  
NOT TO SCALE

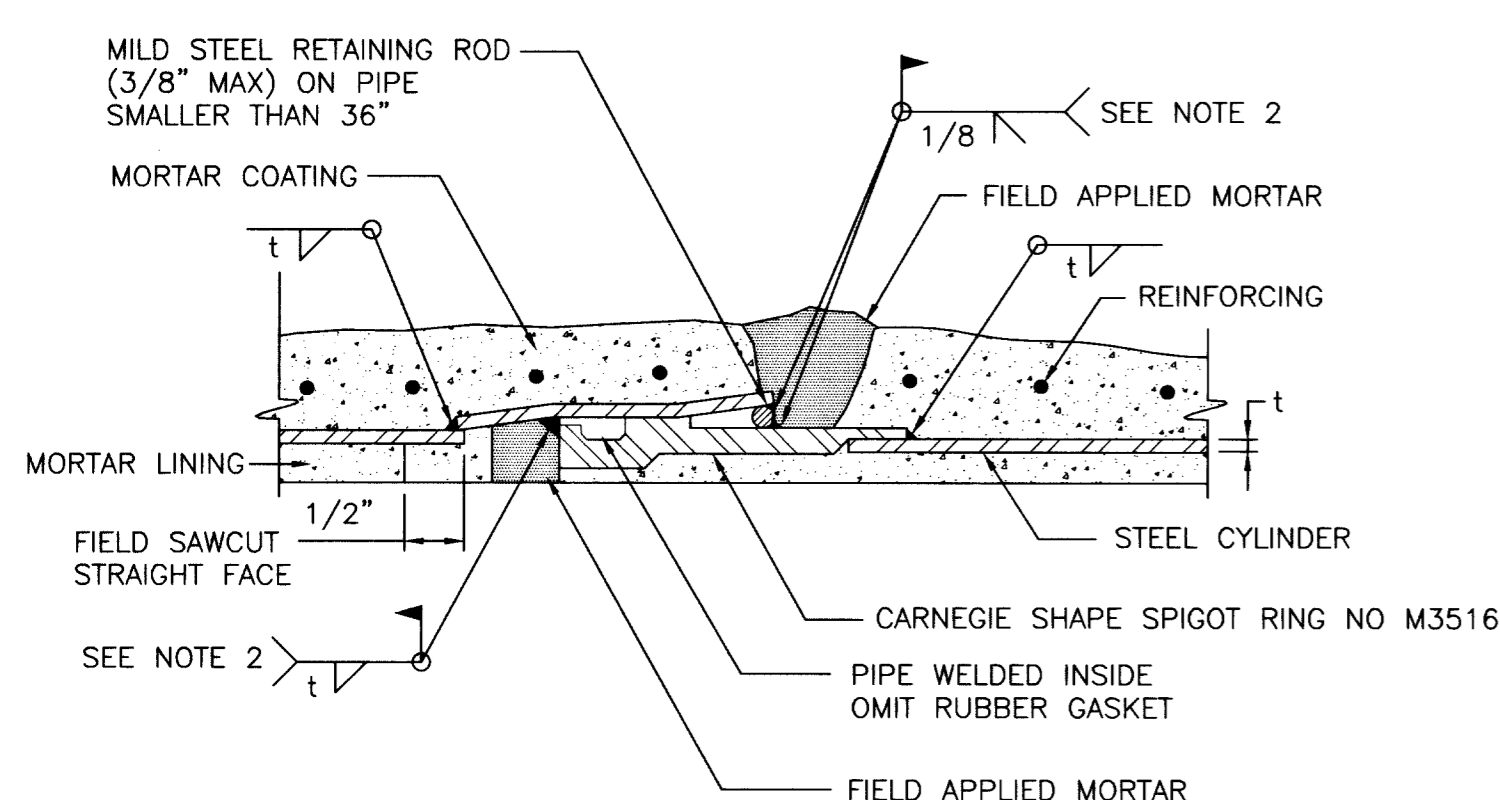


- NOTES**
1. COAT BURIED EXPOSED METAL SURFACES WITH 1" THICK CEMENT MORTAR, REINFORCED WITH 1/2" x 1/2" NO 12 GAUGE WELDED WIRE MESH AND WRAP WITH TWO (2) SHEETS OF POLYETHYLENE SHEETING.
  2. PIPE ACCESS IS INTENDED FOR USE DURING CONSTRUCTION ONLY.

**PIPE ACCESS ASSEMBLY** (8)  
NOT TO SCALE

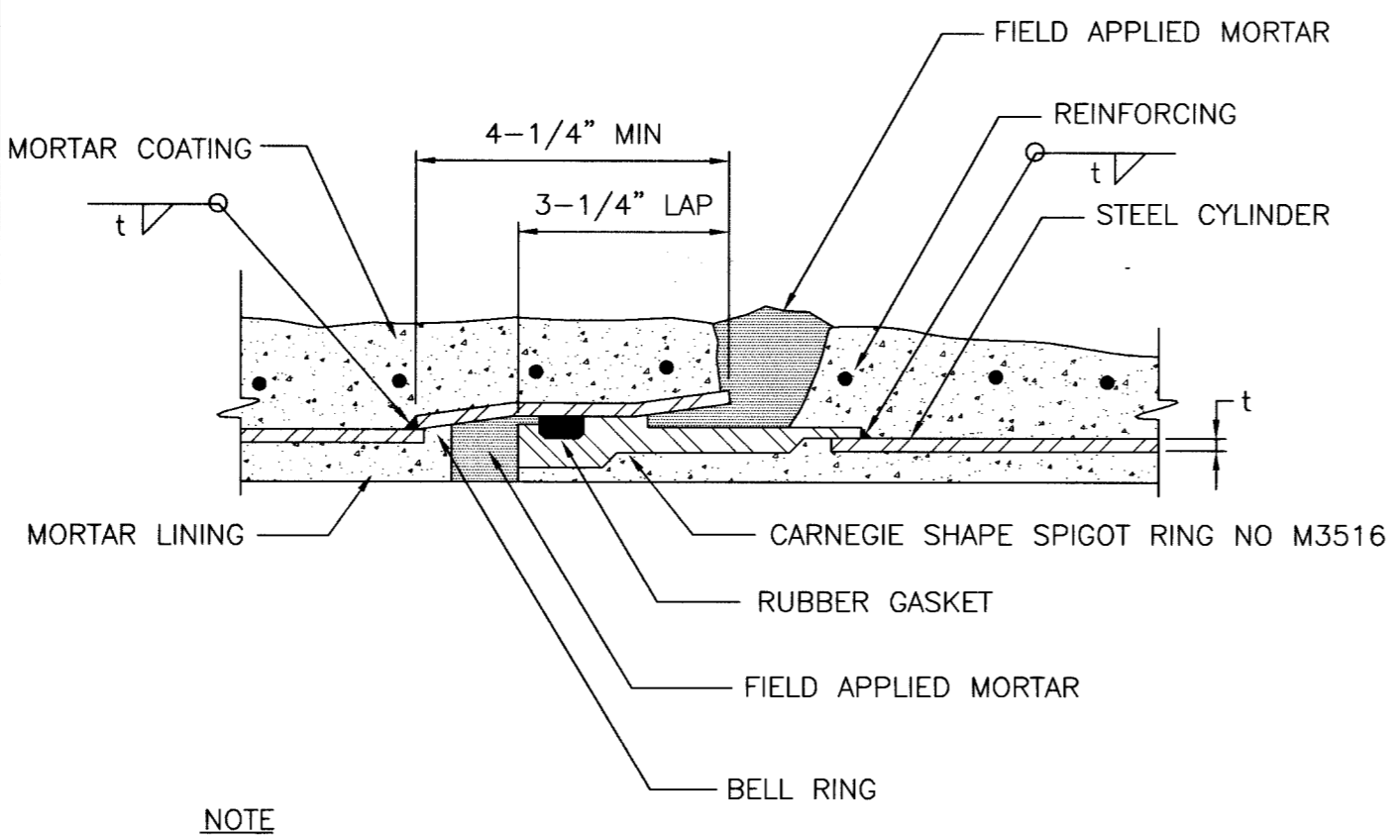


**ACCESS MANHOLE ENCASEMENT** (10)  
NOT TO SCALE



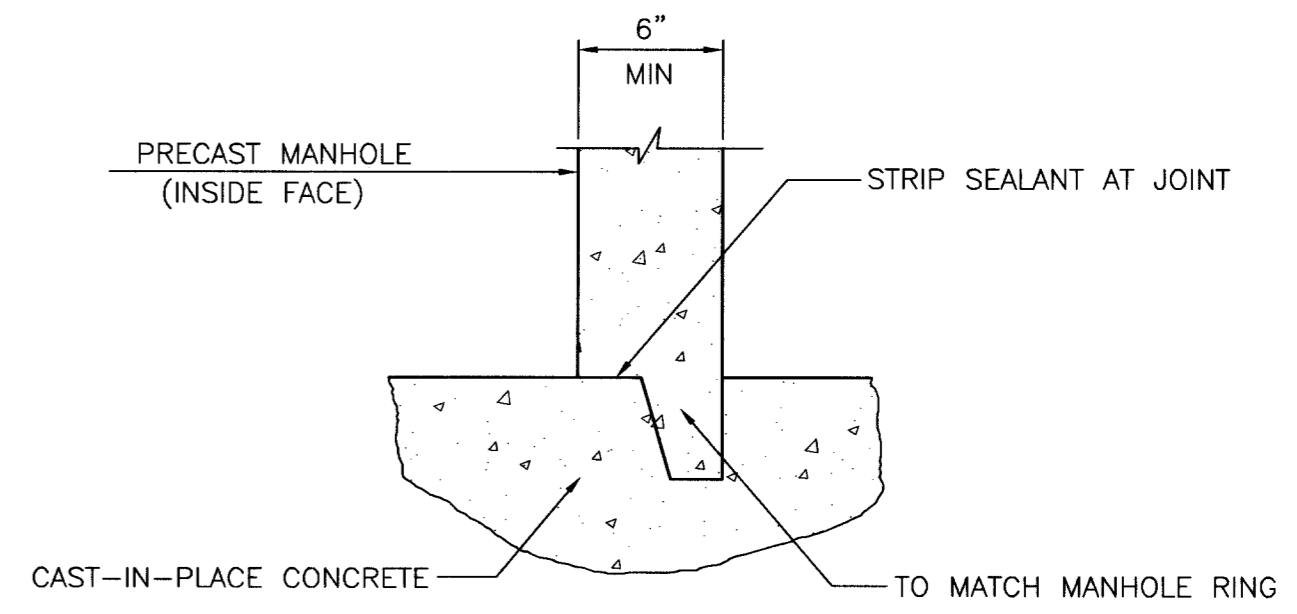
- NOTES**
1. SEE SPECS SEC 02511 FOR MORTAR LINED AND COATED STEEL PIPE
  2. WELD OUTSIDE ON PIPE SMALLER THAN 36". OPTIONAL INSIDE OR OUTSIDE ON PIPE GREATER THAN OR EQUAL TO 36"

**CARNEGIE JOINT FIELD WELDED** (3)  
NOT TO SCALE

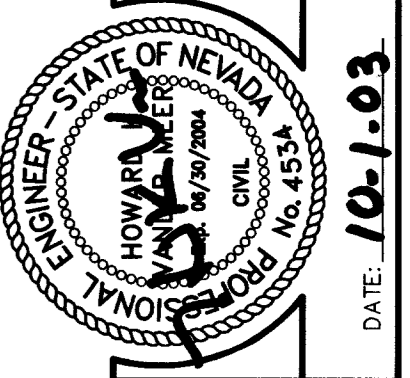


- NOTE**
1. SEE SPECS SEC 02511 FOR MORTAR LINED AND COATED STEEL PIPE

**CARNEGIE JOINT** (6)  
NOT TO SCALE



**PRECAST TO CIP CONC BASE JT DETAIL** (11)  
NOT TO SCALE



SUBMITTAL 10/03/03

DESIGN:	MAC
DRAWN:	RAB
CHECK:	HAD
ISSUE DATE:	12/05/02
ISSUE EDITOR:	YO-03
PLOT DATE:	09-30-03
PLOT TIME:	13:06:10

**G.C. WALLACE, INC.**  
Engineers/Planners/Surveyors  
1585 SOUTH RAINBOW BLVD./LAS VEGAS, NEVADA 89146  
TELEPHONE: (702) 804-2000 • FAX: (702) 804-2299  
F: 1390-211-305-2 • www.wallaceinc.com • 502-2609-849

**NORTH VALLEY ENTERPRISES, LLC.**  
2490 ZONE INLET/OUTLET PIPELINE PHASE II  
PIPE JOINT DETAILS