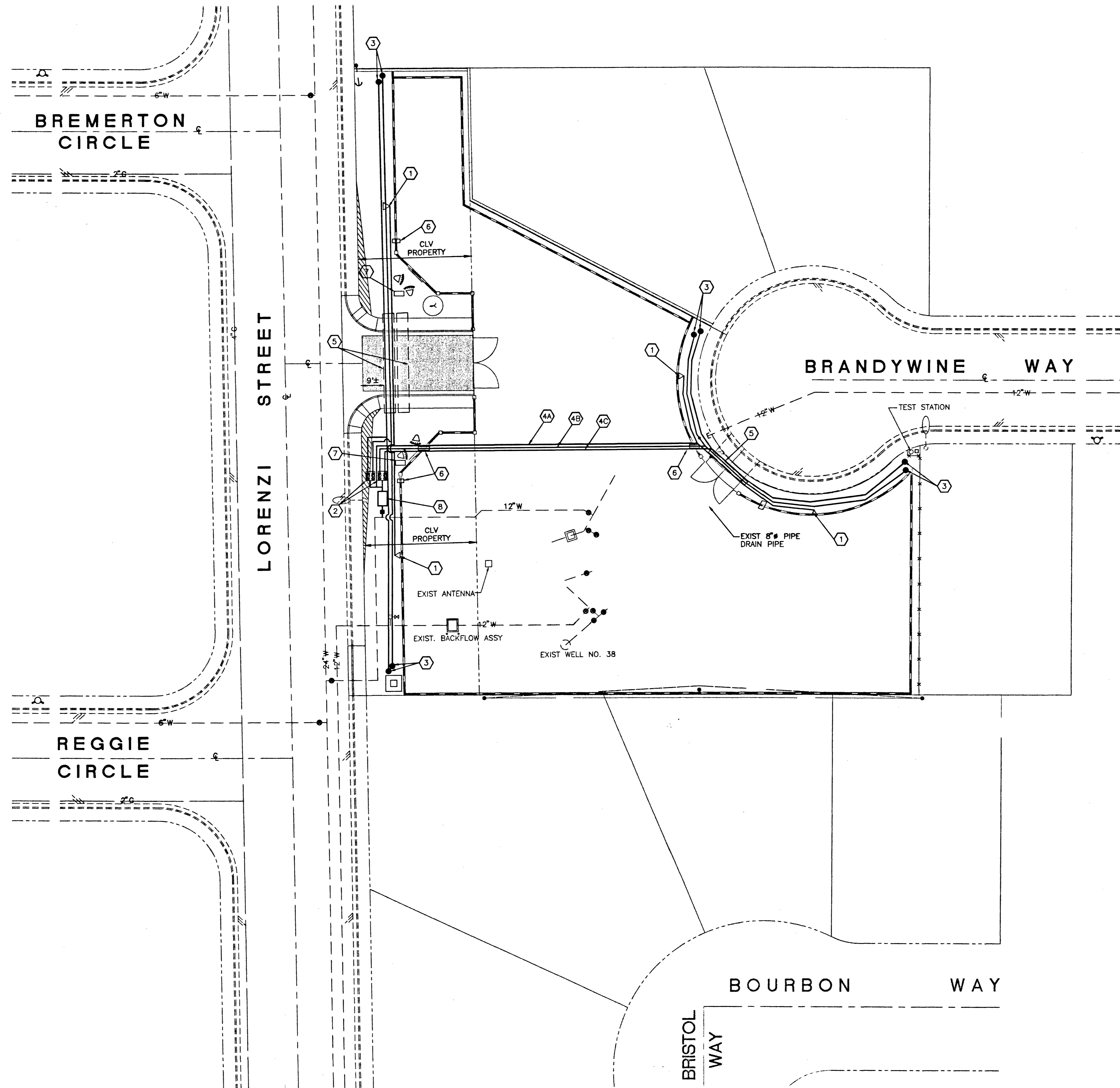


IRRIGATION CONSTRUCTION NOTES

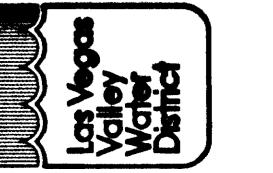
- ① INSTALL QUICK COUPLING VALVE AND BOX (TYP OF 4), SEE ⑥/15
- ② INSTALL IRRIGATION CONTROL VALVE BOX (TYP OF 2), SEE ③/15
- ③ INSTALL FLUSH VALVE ASSEMBLY (TYP OF 8), SEE ④/15
- ④ INSTALL 3-1" PVC PIPE, FOR TRENCHING, SEE ②/15
 - A. FOR QUICK COUPLING LINE
 - B. FOR TREE ZONE LINE
 - C. FOR SHRUB AND OTHER LINE
- ⑤ EXISTING 4" PVC PIPE SLEEVE UNDER DRIVEWAY (TYP 2 PLACES), SEE DWG. NO. C2
- ⑥ WALL PENETRATION (TYP 2 PLACES), SEE ②/15
- ⑦ PULLBOX CONCRETE, SEE DWG. NO. E3
- ⑧ 1" RPPA, SEE DWG. NO. C3

NOTES

- 1. PROPER STEPS SHALL BE TAKEN TO SAFEGUARD THE BASE OF ANY ITEM OR STRUCTURE WITHIN THE LANDSCAPE LIMITS. LANDSCAPE BARRIERS SHALL BE INSTALLED 6" MIN FROM THE BASE TO THE EDGE OF THE LANDSCAPE LIMITS.
- 2. THE CONTRACTOR SHALL BE RESPONSIBLE FOR REPLACING ANY AND ALL DAMAGED OR DISTURBED EXIST LANDSCAPE, ADJACENT TO LVWD SITE, DURING CONSTRUCTION OPERATIONS.
- 3. FOR LANDSCAPE LEGEND, IRRIGATION LEGEND SYMBOLS AND ESTIMATED QUANTITIES, SEE DWG. NO. L1
- 4. FOR EMITTERS INSTALLATION AND CONFIGURATION, SEE DWG. NO. L6



LAS VEGAS VALLEY WATER DISTRICT
 1001 S. VALLEY VIEW BOULEVARD
 LAS VEGAS, NEVADA 89153
 (702) 870-2071

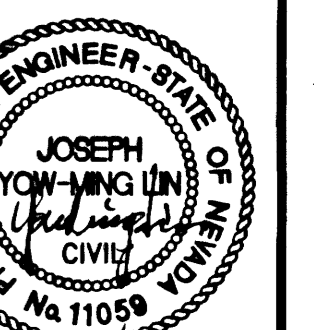


VERIFY SCALE
 1/2" 0 1/2"
 BAR REPRESENTS ONE AND ONE-HALF INCHES ON ORIGINAL

SCALE
 1" = 20'

MISCELLANEOUS SITE IMPROVEMENTS
 FY 2001/2002, PHASE I
BRANDYWINE WELL SITE
IRRIGATION PLAN
 I:\contract\c1053\active\104.dwg Plotted @ 07:33 on 04/11/02

DRAWN BY: J. / RCW
 CHECKED BY: J. / WANG
 RECOMMENDED BY: [Signature]
 JOSEPH Y. LIN
 DATE: 4/11/02
 ASSETERED BY: [Signature]
 SHAWN P. MOLLUS
 DATE: 4/11/02



CONTRACT NUMBER
C1053
 DRAWING NUMBER L4
 SHEET 15 OF 23