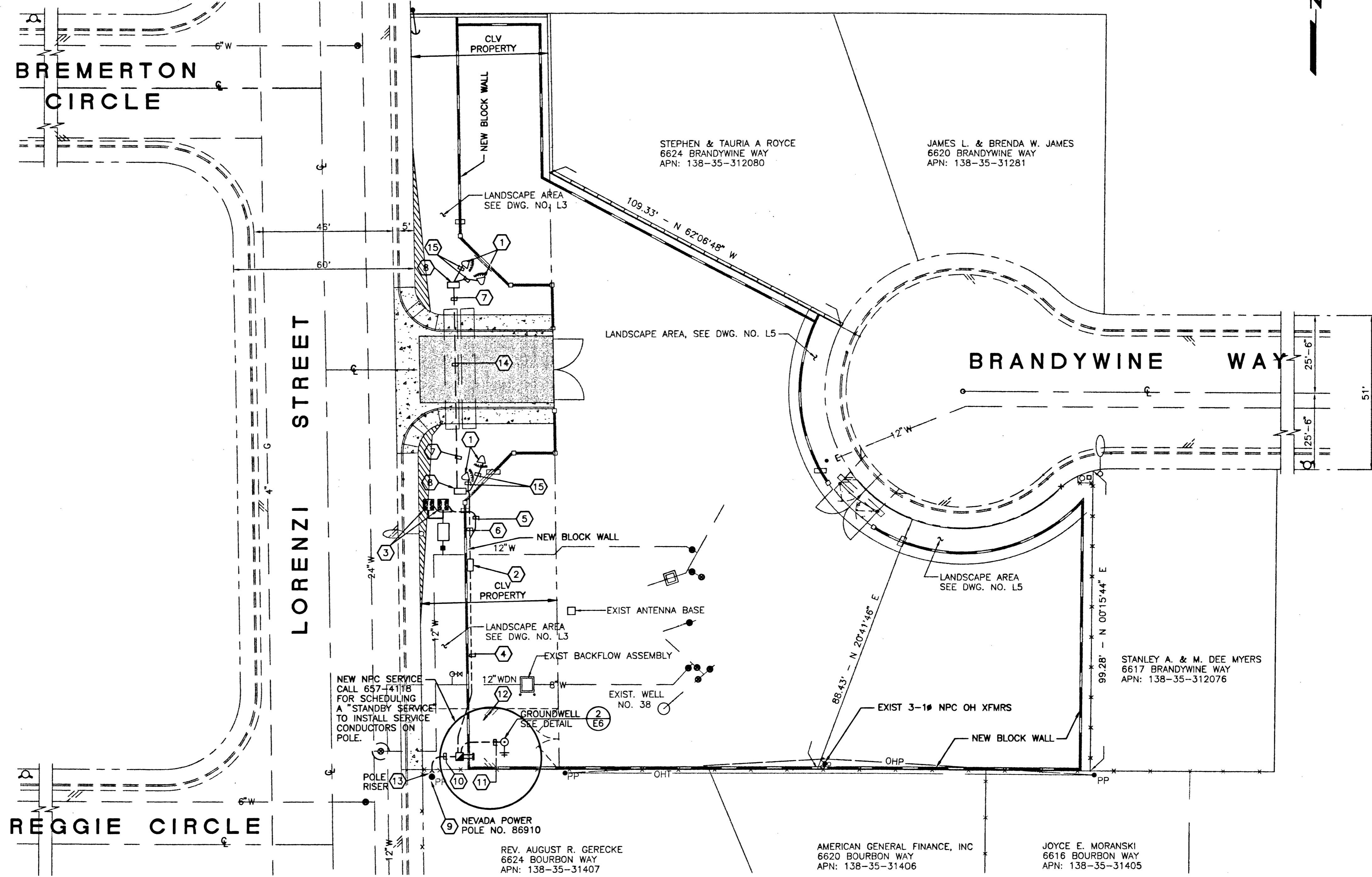


ELECTRICAL CONSTRUCTION NOTES

- 1 INSTALL LANDSCAPE LIGHT FIXTURES (TYP 4 PLACES). ABOVE GRADE MOUNTED 70 WATT METAL HALIDE WITH VARIABLE FLOOD OPTICS, GREENLEE LIGHTING, FIXTURE MODEL: SLS-70MH-MT-VF-VGD-GS, MOUNTING: SLS-SMC-VDC OR ENGINEER APPROVED. FIXTURES SHALL BE INSTALLED PER RECOMMENDATION OF THE MANUFACTURER.
- 2 INSTALL IRRIGATION/LIGHTING ENTRY MONUMENT CONTROL ENCLOSURE, SEE DETAIL 5
E5
- 3 LANDSCAPE IRRIGATION CONTROL VALVE ASSEMBLY, SEE DWG. NO. C4
- 4 INSTALL 1, 1-1/2" C, 2#10 W/GND, FROM NEW SERVICE PEDESTAL TO IRRIGATION/LIGHTING CONTROL ENCLOSURE
- 5 INSTALL 1" C, FROM IRRIGATION/LIGHTING CONTROL ENCLOSURE TO IRRIGATION CONTROL VALVES. SEE DETAIL 15
- 6 INSTALL 1" C, FROM IRRIGATION/LIGHTING CONTROL ENCLOSURE TO CONTROL VALVES. 1" C, 2#10 W/GND FROM LIGHTING CONTACTOR TO PULLBOX.
- 7 INSTALL 1" C, 2#10 W/GND TO ENTRY MONUMENT LIGHTING. INSTALL 1" C SPARE PULLBOX TO PULLBOX.
- 8 INSTALL PULLBOX (TYP 2 PLACES), PB-1, PENCIL PE-6 W/RTM LID, OR EQUAL IMPRINTED WITH "120VAC LANDSCAPE CIRCUITS".
- 9 POWER SERVICE INSTALLATION DETAILS TO BE VERIFIED BY NPCO. AND CONTRACTOR TO COORDINATE WITH NPCO. FOR INSPECTION.
- 10 2" CONDUIT, 3 #2/0, UNDERGROUND, VERIFY POLE RISER AND CONDUIT REQUIREMENTS WITH NPCO.
- 11 INSTALL #2 AWG COPPER FROM GROUND ELECTRODE WELL TO SERVICE PEDESTAL GROUND BUS AND ENCLOSURE GROUND. EXTEND GROUND TO CONTROL ENCLOSURE. PROVIDE 1" RISER TO BRING GROUND INTO LANDSCAPE/LIGHTING CONTROL ENCLOSURE AND BOND TO BACK PANEL WITH COMPRESSION LUG.
- 12 INSTALL METERED SERVICE PEDESTAL SP-"L" PER DETAILS, SEE SCHEDULE ON DWG. NO. E5.
- 13 INSTALL POLE RISER ON NEVADA POWER POLE NO. 86910. NPCO TO INSTALL AND TERMINATE SERVICE CONDUCTOR, CONTRACTOR TO COIL 30 FEET OF CONDUCTOR AT BASE OF POLE.
- 14 PLACE CONDUITS IN TRENCH ADJACENT TO 4" PVC SLEEVE, SEE DETAIL 1
E5
- 15 1-2/C#12 W/GND, TYPE UF DIRECT BURIAL TO LIGHTING FIXTURES. USE 3M WATERPROOF SPLICE KITS.

*CONDUITS ARE OVERSIZED TO ACCOMMODATE FUTURE EXPANSION

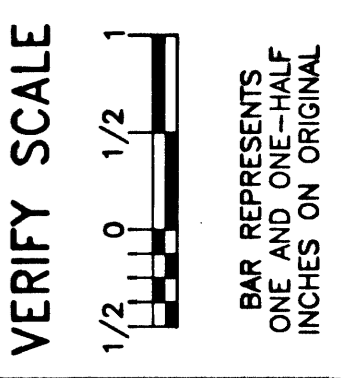


PLAN
SCALE: 1"=20'

PANEL NO. 1	MAINS 100	MAIN BKR 100	SURFACE <input type="checkbox"/>	FLUSH <input type="checkbox"/>	INDOOR <input type="checkbox"/>	OUTDOOR <input checked="" type="checkbox"/>	
VOLTS 120/240	PHASE 1	WIRE 3	GROUND SOLID	NEUTRAL FULL			
MIN KAIC 10	RMS SYM	DOOR: HINGED <input type="checkbox"/>	DOOR-IN-DOOR <input type="checkbox"/>	LATCH/LOCK <input type="checkbox"/>	SVC ENT <input checked="" type="checkbox"/>		
BUS: ALUM. <input type="checkbox"/>	COPPER <input checked="" type="checkbox"/>	BREAKERS: SLIP-ON <input type="checkbox"/>	BOLT-ON <input checked="" type="checkbox"/>	SITE LOCATION BRANDYWINE			
DESCRIPTION	WATTS		POLE	BKR	WATTS		DESCRIPTION
	L1	L2			L1	L2	
IRRIGATION RECEPT	180	480	1	2	180	480	SPARE
ENTRY LIGHTING		480	3	4		480	SPARE
SPARE			5	6			SPARE
SPARE			7	8			SPARE
SPACE			9	10			SPACE
SPACE			11	12			SPACE
	180	480					

SERVICE PEDESTAL - BRANDYWINE SITE

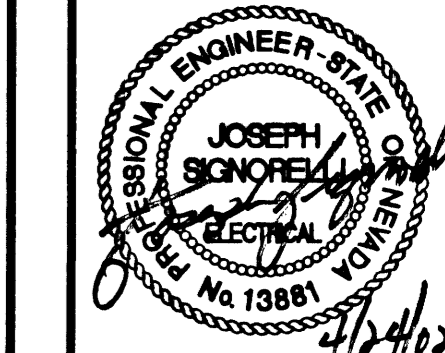
LAS VEGAS VALLEY WATER DISTRICT
1001 S. VALLEY VIEW BOULEVARD
LAS VEGAS, NEVADA 89153
702 870-8000



MISCELLANEOUS SITE IMPROVEMENTS
FY 2001/2002, PHASE I

BRANDYWINE WELL SITE
ELECTRICAL SITE PLAN

DRAWN BY: P.J. / RCW
CHECKED BY: K. KORPI
RECOMMENDED BY: JOSEPH S. MORAN
DATE: 4/19/02



CONTRACT NUMBER
C1053
DRAWING NUMBER E3
SHEET 20 OF 23