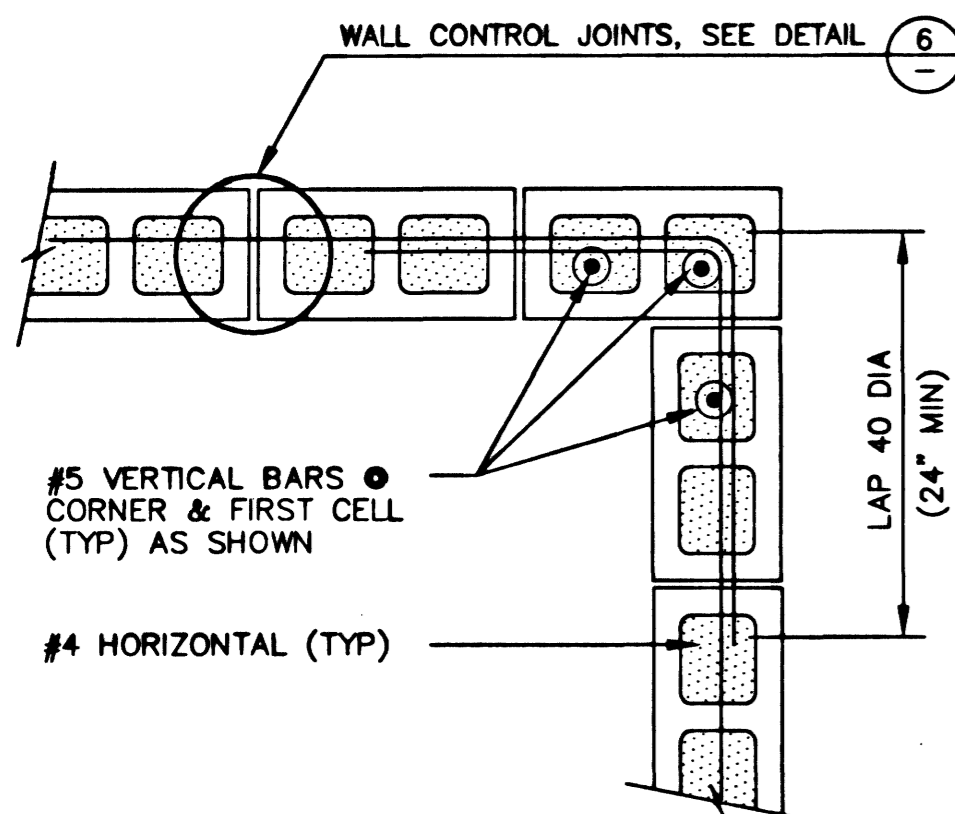


ENTRANCE GATE CONSTRUCTION NOTES

- ① 8" SQ x 1/2" STEEL TUBE GATE POST, COLOR FRAZEE 8242W NORTHERN PLAINS OR APPROVED EQUAL (TYP 2 PLACES).
- ② 3-1/2" SQ x 1/4" STEEL TUBE GATE FRAME, COLOR FRAZEE 8242W NORTHERN PLAINS OR APPROVED EQUAL.
- ③ 2" SQ x 16 GA STEEL TUBE GATE DECORATION, COLOR FRAZEE 8242W NORTHERN PLAINS OR APPROVED EQUAL.
- ④ 1" SQ STEEL BAR GATE DECORATION, COLOR FRAZEE 8242W NORTHERN PLAIN OR APPROVED EQUAL (TYP).
- ⑤ 8" SQ x 1/4" STEEL CAP WELDED TO THE TOP OF GATE POST (TYP 2 PLACES).
- ⑥ ENGINEER SHALL CONFIRM/VERIFY THE ADEQUACY OF FOUNDATION FOR GATE POST.
- ⑦ PARTIAL REMOVAL OF EXISTING WALL FOOTING, FINISHED PAVEMENT, CURB AND GUTTER MAY BE REQUIRED IN ORDER TO SET GATE POST FOOTING, AND THE DOWN-ROD ASSEMBLY BASE.
- ⑧ IF NOTE ⑦ IS APPLICABLE, THE CONTRACTOR SHALL BE RESPONSIBLE FOR REPLACING AND REFINISHING ALL DISTURBED ITEMS.
- ⑨ PLACE BARS, AS THE TOTAL AMOUNT SHOWN, AT EQUAL DISTANCES, NOT MORE THAN 4" INCHES APART (TYP).
- ⑩ INSTALL 7" BARREL HINGE (TYP OF 6).
- ⑪ DIMENSION SHALL BE DETERMINED BY HINGE MANUFACTURER'S REQUIREMENTS.

ENTRANCE GATE DETAIL

SCALE: 3/8" = 1'-0"

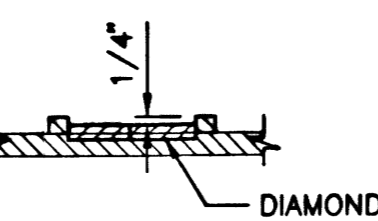


TYPICAL CORNER REINFORCING

NOT TO SCALE

TUBULAR STL 5/8" x 5/8" x 16 GA FABRICATE TO APPEAR AS A SINGLE UNIT, GRIND ALL WELDS AND JOINT SMOOTH, TACK WELD TO FENCE AT ALL FOUR CORNERS

PLAN

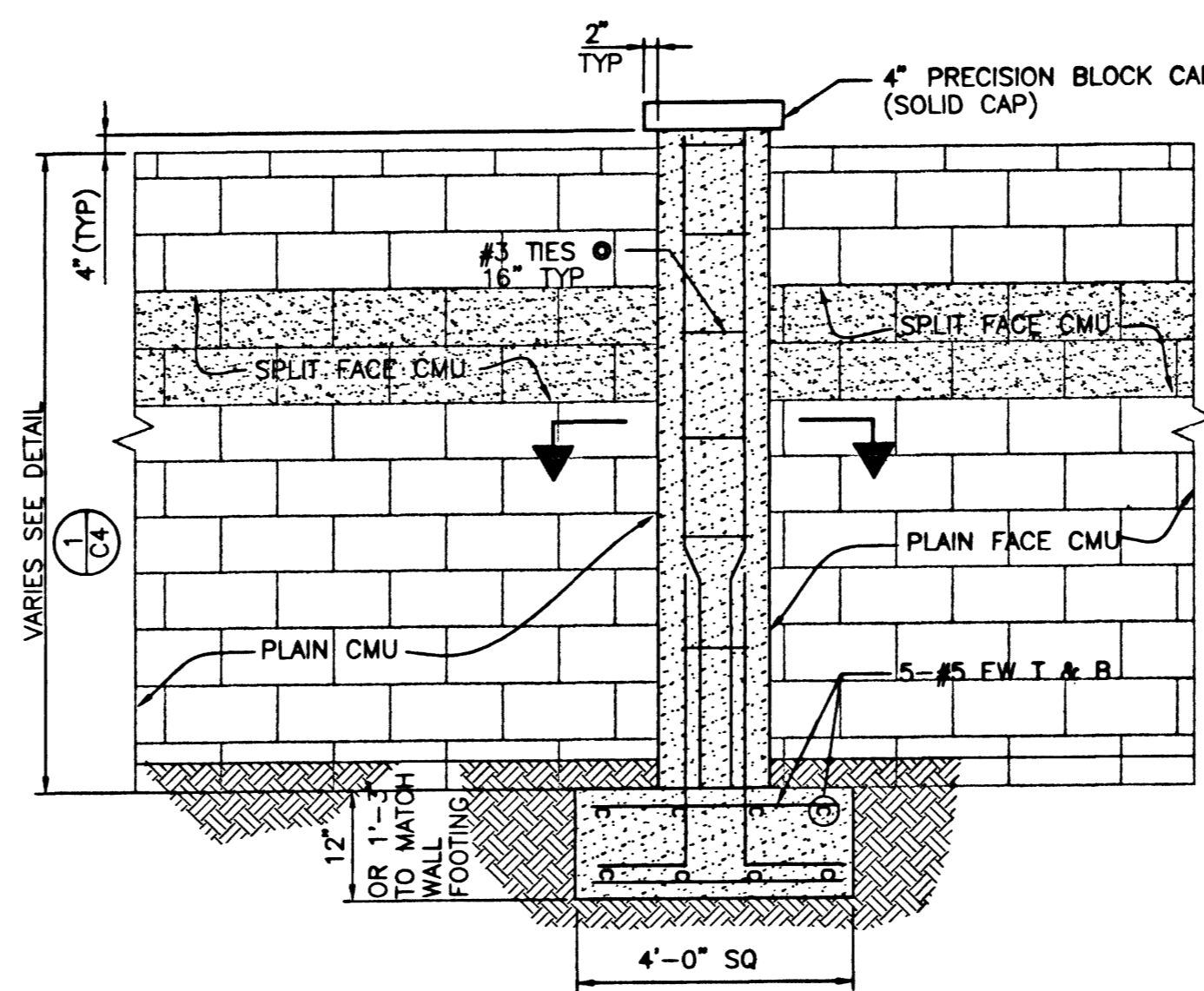


SECTION

OFFSET DIAMOND INSERT 1/4" TO PROVIDE PROPER WELDING AT ALL FOUR CORNERS

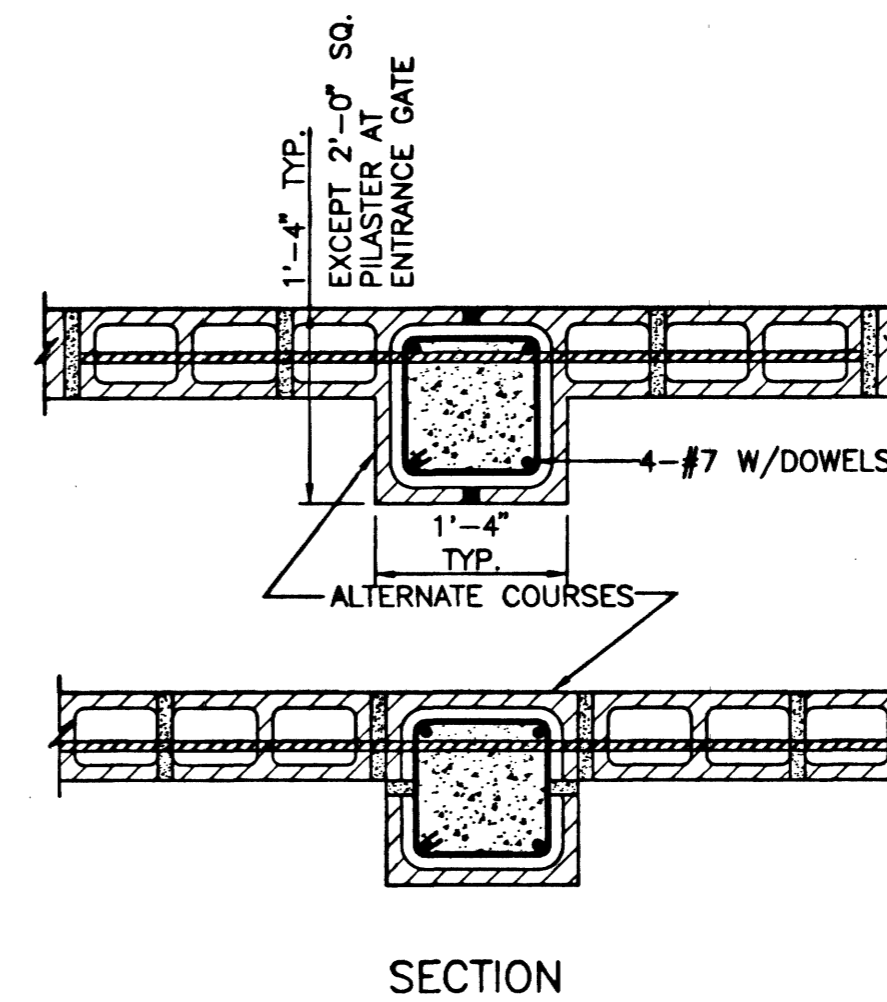
DECORATIVE DIAMOND INSERT

NOT TO SCALE

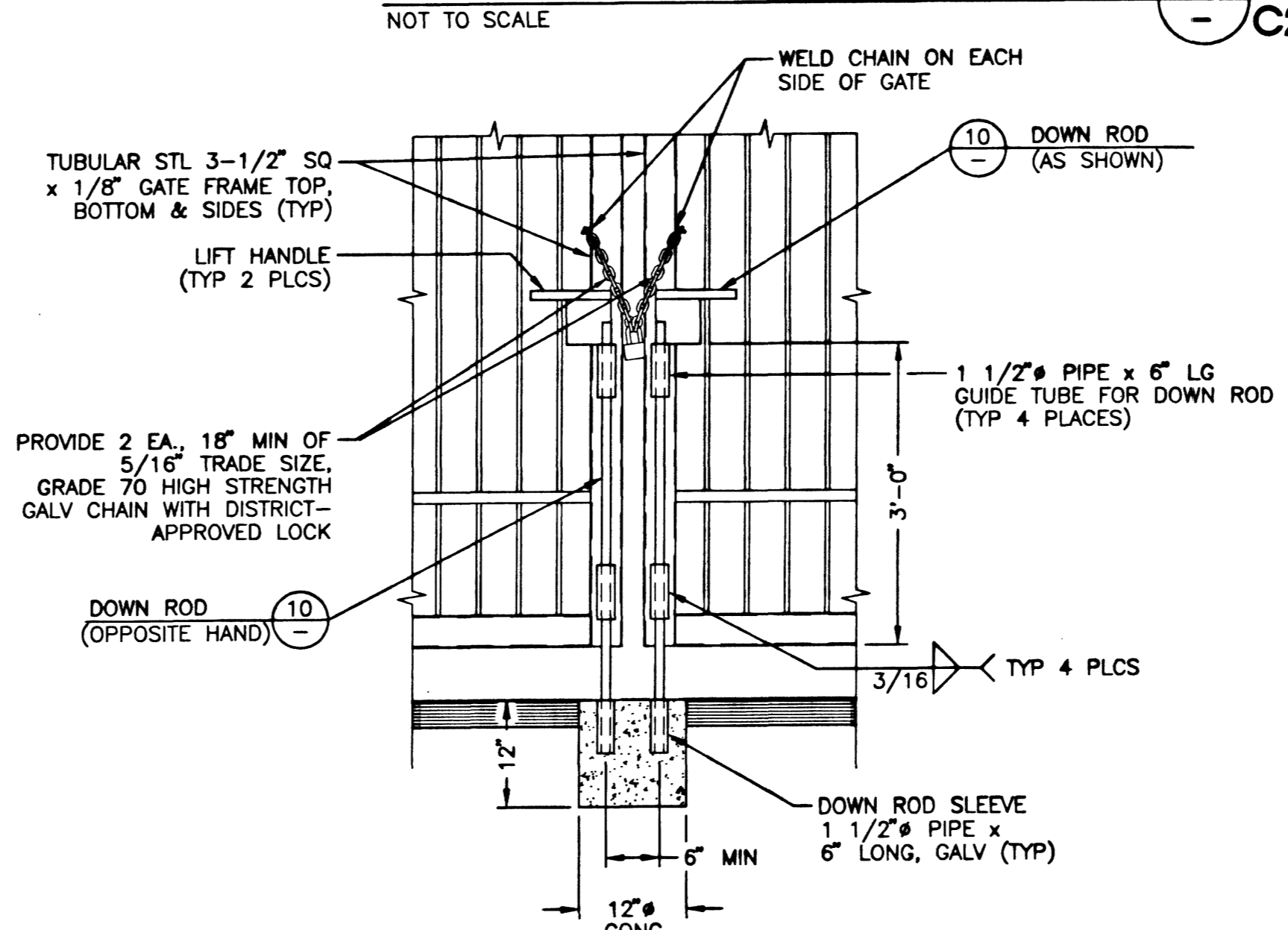


PILASTER DETAIL

NOT TO SCALE

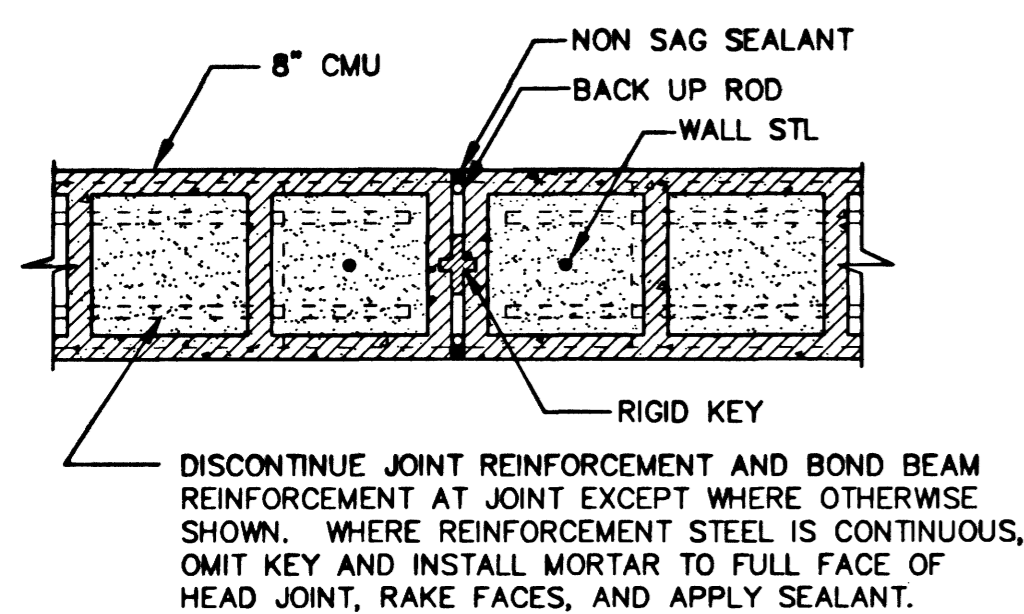


SECTION



DOWN ROD ASSEMBLY

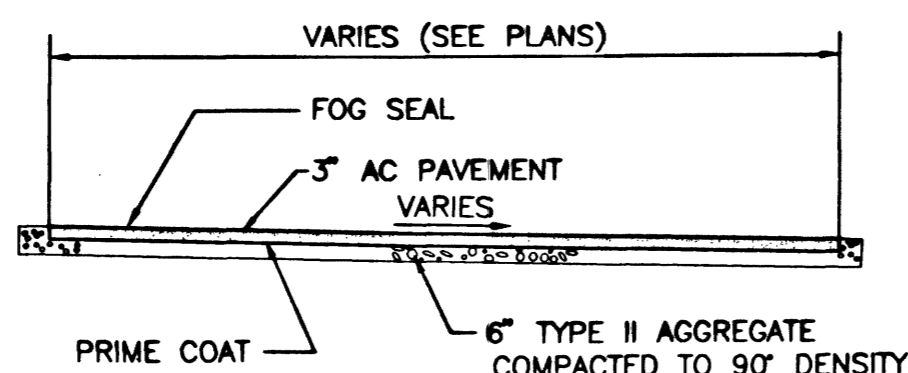
NOT TO SCALE



SECTION

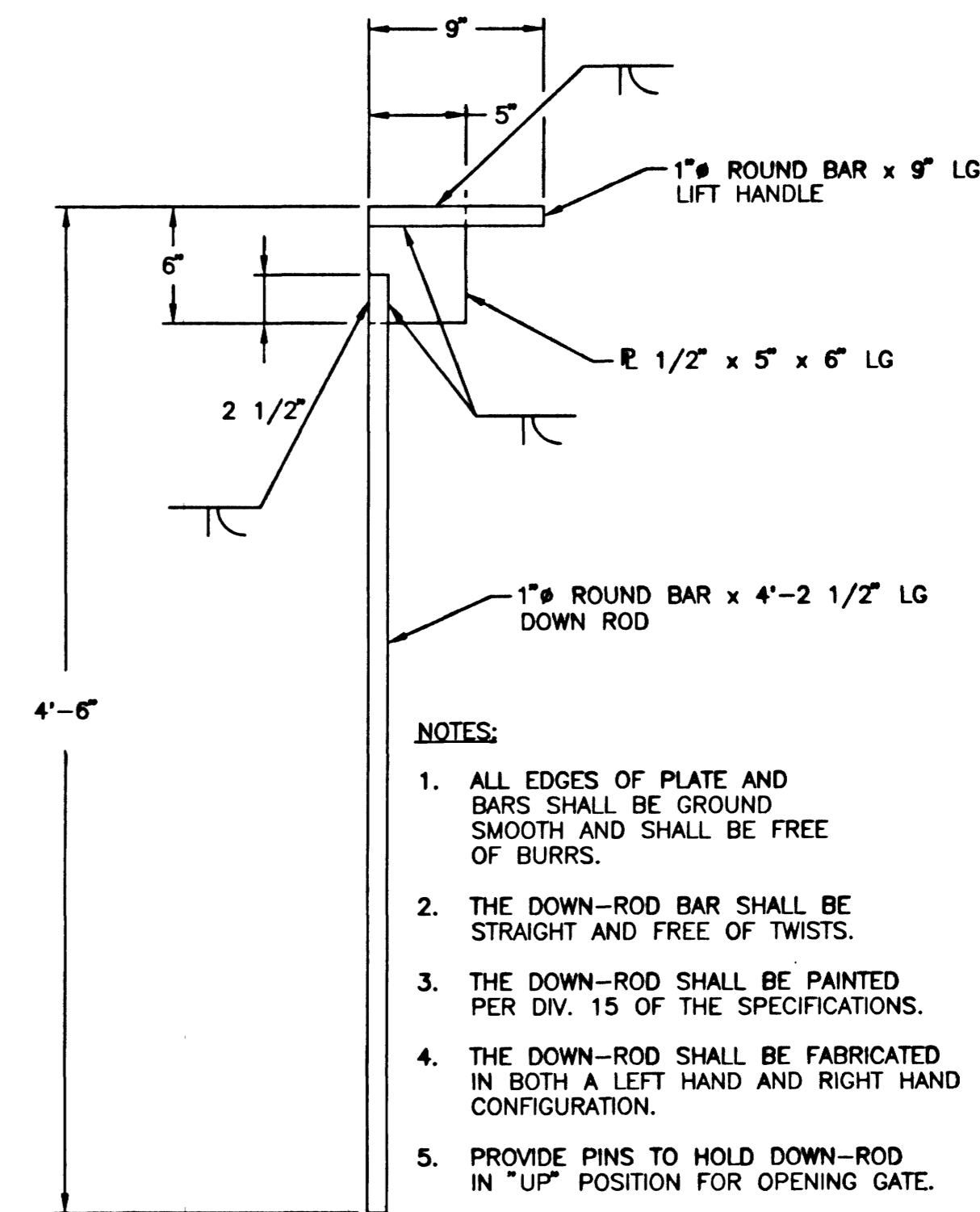
WALL CONTROL JOINT

NOT TO SCALE



DRIVEWAY SECTION

NOT TO SCALE



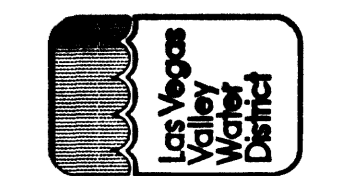
DOWN ROD DETAIL

SCALE: 1 1/2" = 1'-0"

NOTES:

1. ALL EDGES OF PLATE AND BARS SHALL BE GROUND SMOOTH AND SHALL BE FREE OF BURRS.
2. THE DOWN-ROD BAR SHALL BE STRAIGHT AND FREE OF TWISTS.
3. THE DOWN-ROD SHALL BE PAINTED PER DIV. 15 OF THE SPECIFICATIONS.
4. THE DOWN-ROD SHALL BE FABRICATED IN BOTH A LEFT HAND AND RIGHT HAND CONFIGURATION.
5. PROVIDE PINS TO HOLD DOWN-ROD IN "UP" POSITION FOR OPENING GATE.

LAS VEGAS VALLEY WATER DISTRICT
 1001 S. VALLEY VIEW BOULEVARD
 LAS VEGAS, NEVADA 89163
 (702) 870-2071



VERIFY SCALE
 1/2" = 0' 1/2"
 1" = 1' 0"
 BARS REPRESENT ONE AND ONE-HALF INCHES ON ORIGINAL

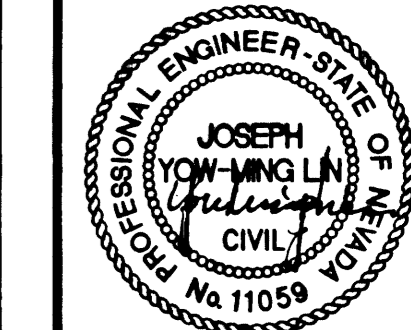
MISCELLANEOUS SITE IMPROVEMENTS
 FY 2001/2002, PHASE I

BLOCK WALL, ENTRANCE GATE
 AND MISCELLANEOUS DETAILS - I

SCALE: NONE

DATE: 04/11/02
 PLOTTED: 04/11/02

DRAWN BY: RW
 CHECKED BY: JAL/WAG
 RECOMMENDED BY: JAL/WAG
 DATE: 4/11/2002
 APPROVED BY: JOSEPH Y. LIN
 DATE: 4/11/02
 SHAWN P. MOLLUS



CONTRACT NUMBER
C1053
 DRAWING NUMBER C3
 SHEET 8 OF 23