

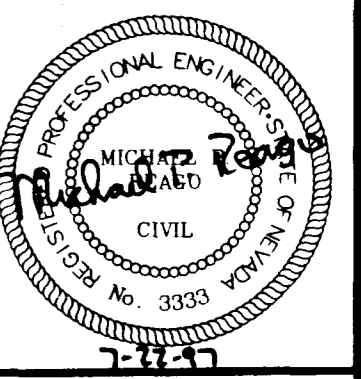
LAS VEGAS VALLEY WATER DISTRICT
 1001 S. VALLEY VIEW BOULEVARD
 LAS VEGAS, NEVADA 89153
 (702) 870-2011

VERIFY SCALE
 1/2" = 0' 1/2"
 BAR REPRESENTS ONE AND ONE-HALF INCHES ON ORIGINAL

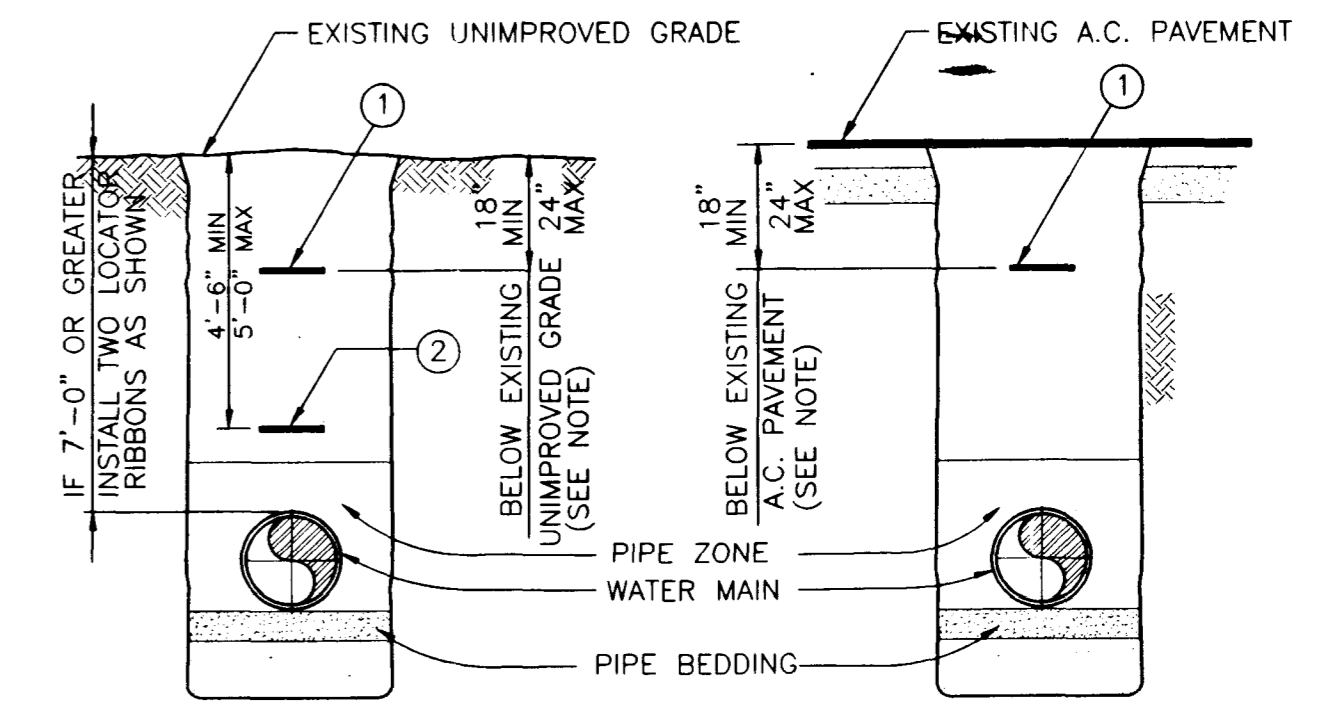
STANDARD DETAILS
 I:\CONTRACT\0851\085107.dwg 05/31/97 08:49

MISCELLANEOUS CAST IRON MAIN REPLACEMENT FY 97/98, PHASE I

DRAWN BY: STEPHEN D. MILLER 9/98
 CHECKED BY: WALTER YADINI 9/98
 RECOMMENDED BY: Michael P. Reago 7-22-97
 R.P.E. NO. DATE: 3333
 ACCEPTED BY: MICHAEL P. REAGO
 SHAWN P. MOLLUS 9651 R.P.E. NO. DATE



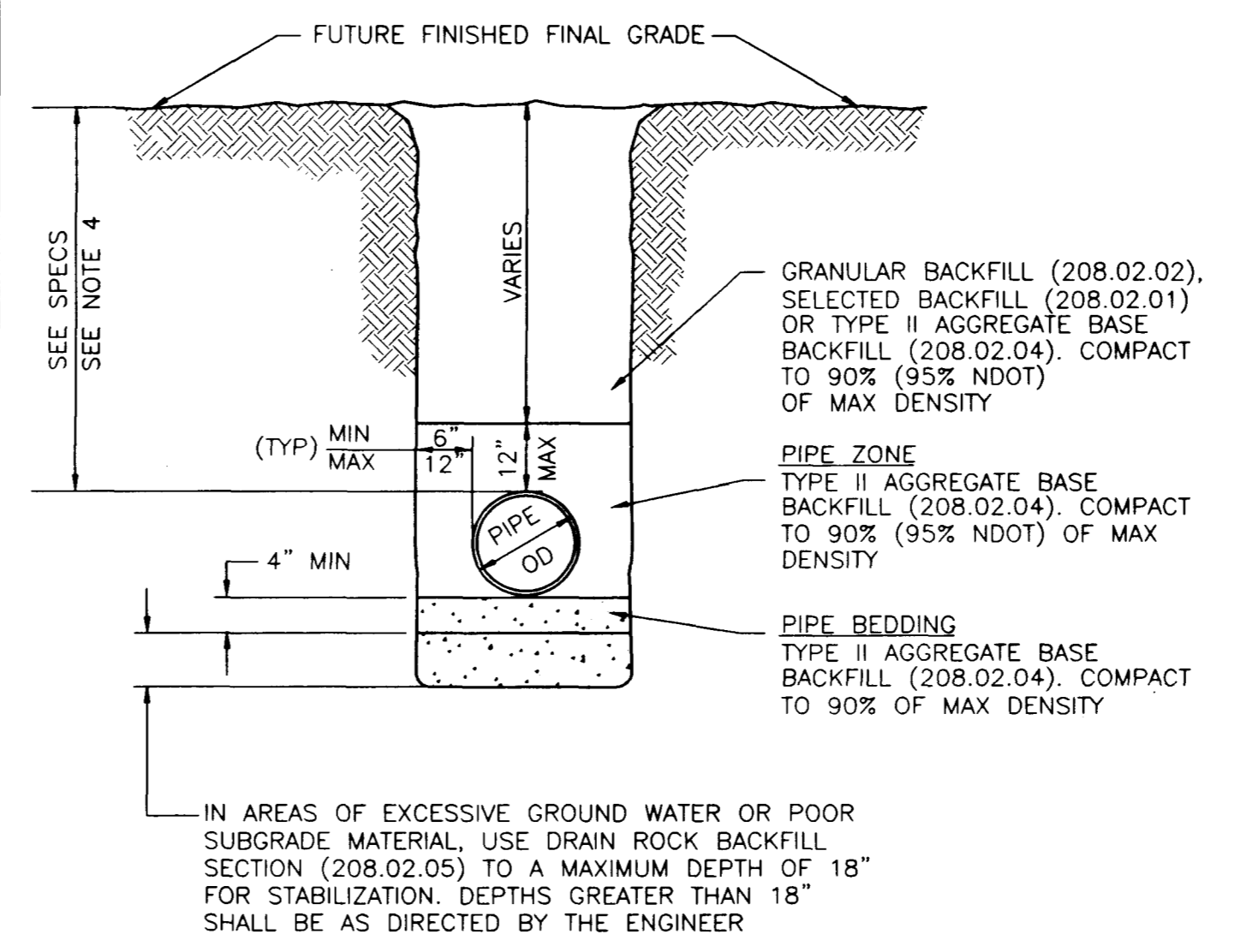
CONTRACT NUMBER
851
 DRAWING NUMBER D1
 SHEET 7 OF 9



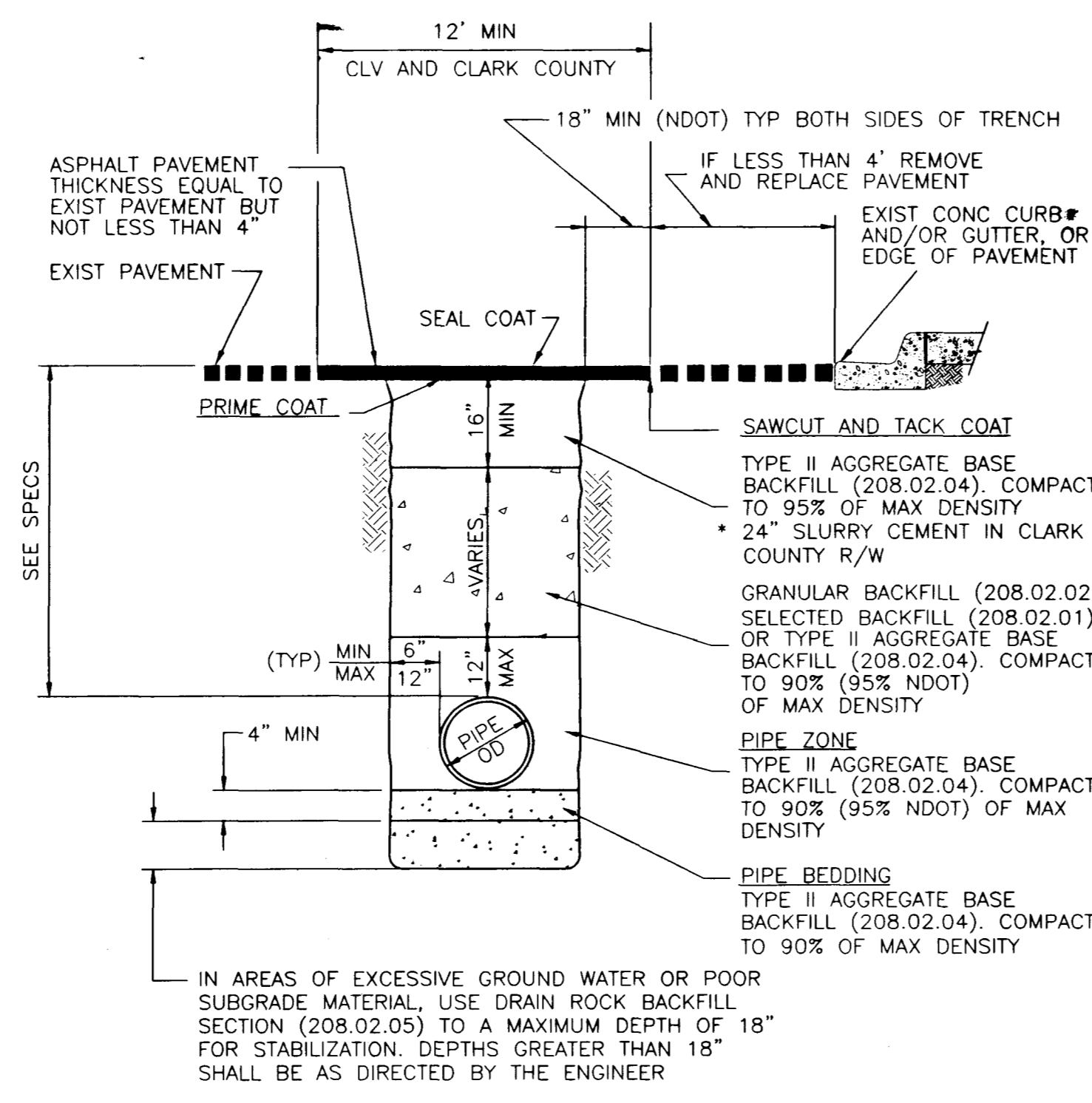
- ① PIPE LOCATOR RIBBON - 3" WIDTH
- ② PIPE LOCATOR RIBBON - 6" WIDTH

NOTE
 1 CENTER PIPE LOCATOR RIBBON IN TRENCH AND PLACE OVER ENTIRE LENGTH OF ALL TYPES, SIZES AND LOCATIONS OF WATER MAINS

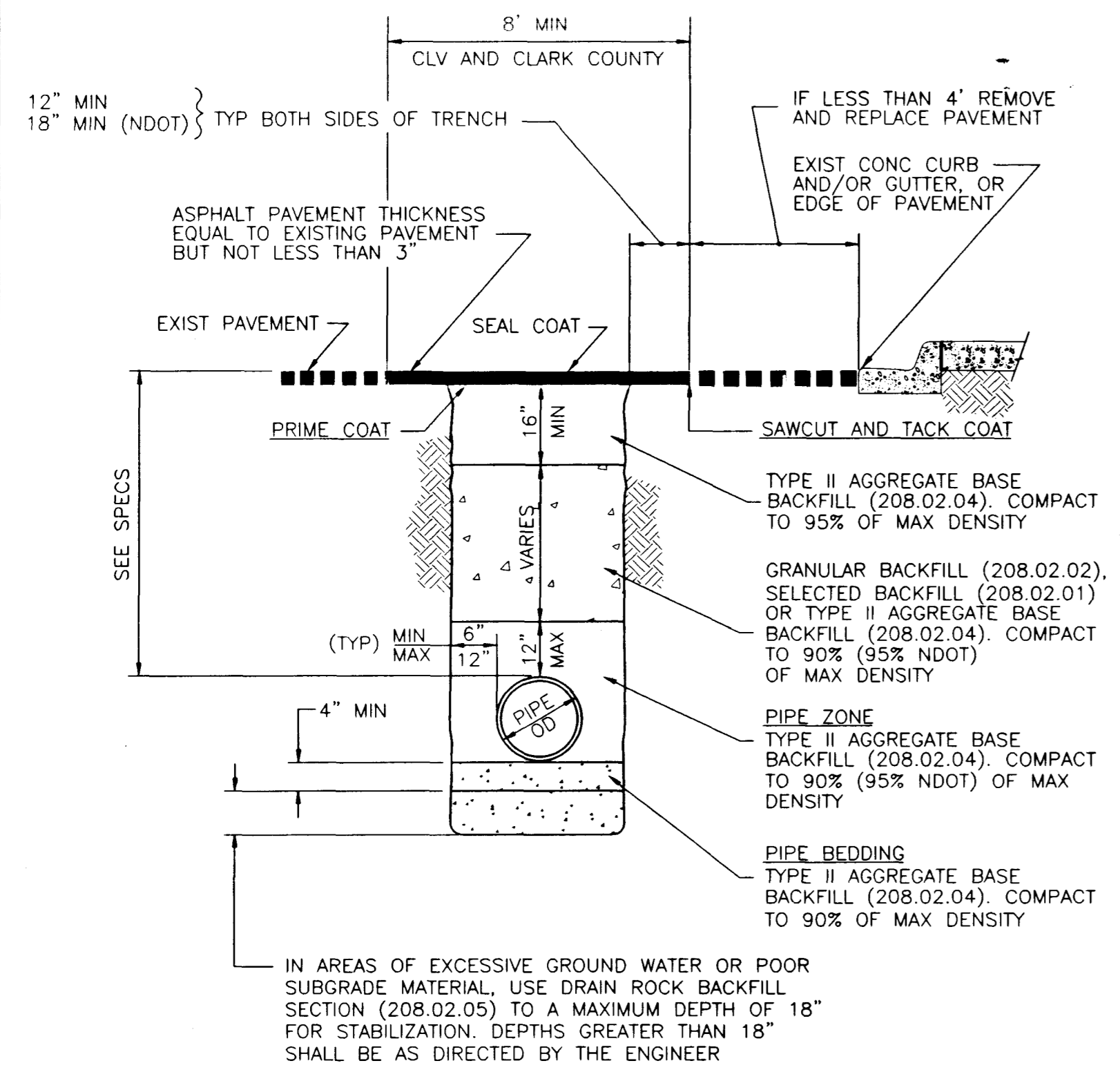
PIPE LOCATOR RIBBON ①
TYPICAL INSTALLATION
 NOT TO SCALE



UNPAVED AREAS ②
TRENCH SECTION BACKFILL SPECIFICATION
 NOT TO SCALE



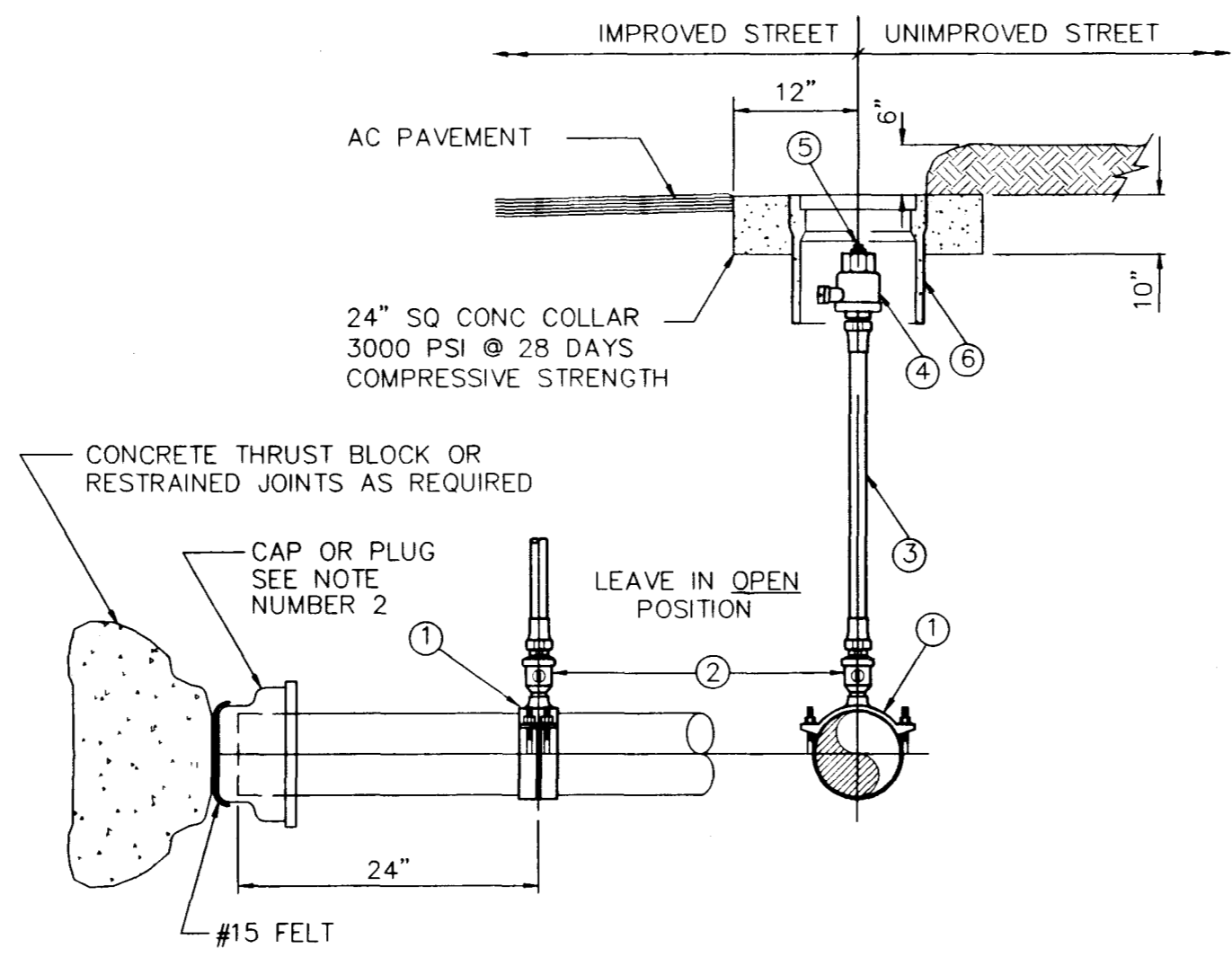
PAVED AREAS (STREET R/W GREATER THAN 60') ③
TRENCH SECTION BACKFILL SPECIFICATION
 NOT TO SCALE



PAVED AREAS (STREET R/W 60' OR LESS) ④
TRENCH SECTION BACKFILL SPECIFICATION
 NOT TO SCALE

NOTES FOR PAVED AND UNPAVED AREAS

1. ACCEPTABLE METHODS OF COMPACTION
 - A BEDDING AND PIPE ZONE AREAS
 FLOODING AND JETTING OR MECHANICAL COMPACTION (NEVADA DEPARTMENT OF TRANSPORTATION RIGHT OF WAY MECHANICAL COMPACTION ONLY)
 - B ABOVE PIPE ZONE
 FLOODING AND JETTING OR MECHANICAL COMPACTION IN UNPAVED AREAS. MECHANICAL COMPACTION IN PAVED AREAS. (NEVADA DEPARTMENT OF TRANSPORTATION RIGHT OF WAY MECHANICAL COMPACTION ONLY)
2. TRENCH EXCAVATION SHALL COMPLY WITH THE CURRENT REGULATIONS AS DETERMINED BY NEVADA OCCUPATIONAL SAFETY AND HEALTH ADMINISTRATION.
3. REFERENCE: UNIFORM STANDARD SPECIFICATIONS FOR PUBLIC WORKS CONSTRUCTION OFF-SITE IMPROVEMENTS CLARK COUNTY AREA NEVADA, LATEST EDITION.
4. THE MINIMUM COVER IS REFERENCED TO FUTURE FINISHED FINAL GRADES UNLESS OTHERWISE SHOWN ON PROFILE DRAWINGS.
5. THE PIPE ZONE IS THE TRENCH AROUND THE PIPE TO TWELVE (12) INCHES MAXIMUM AND TEN (10) INCHES MINIMUM ABOVE THE TOP OF THE PIPE.

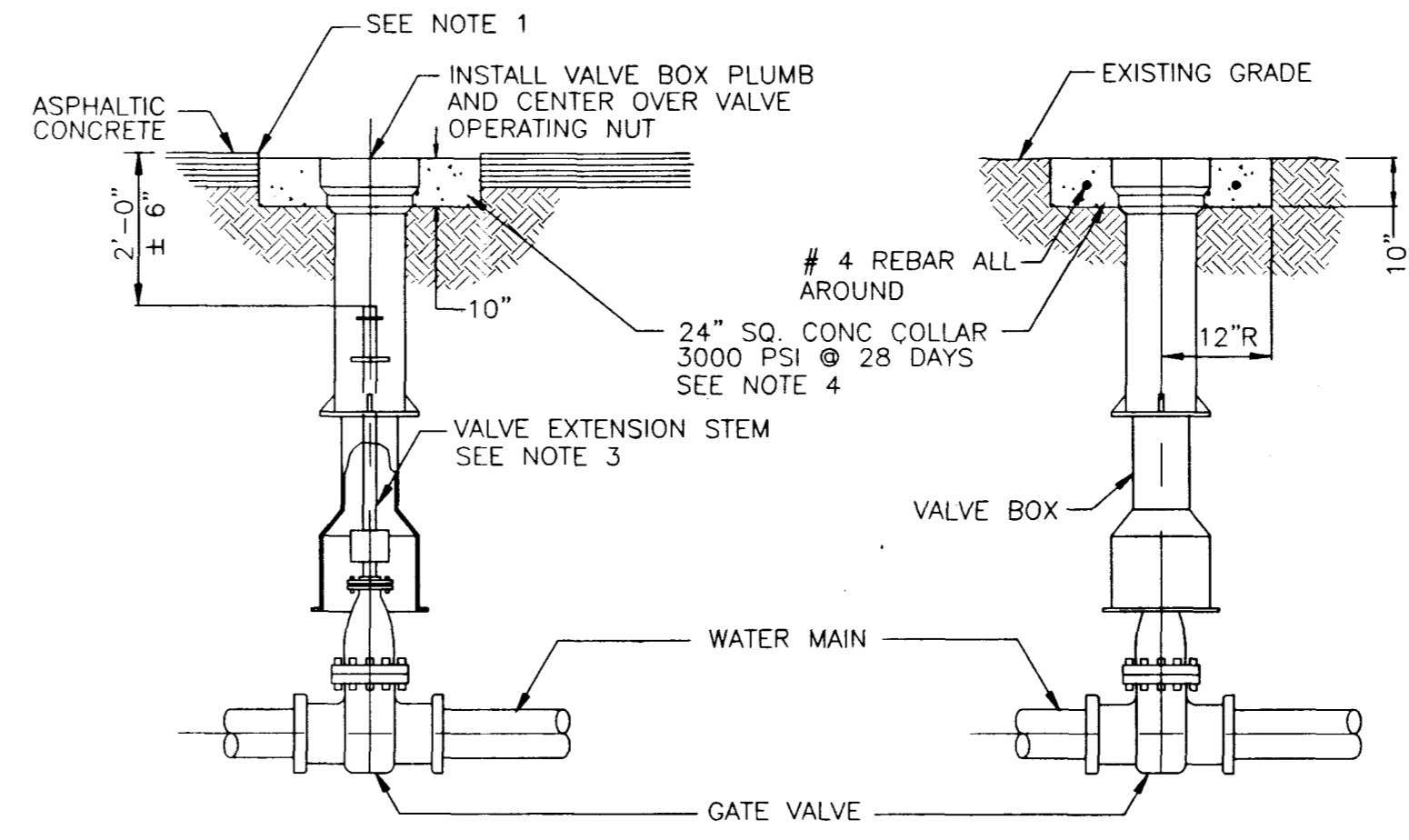


- LEGEND**
- ① SERVICE SADDLE W/2" NPT TAP
 - ② 2" CORPORATION STOP
 - ③ 2" COPPER LATERAL
 - ④ 2" CURB STOP
 - ⑤ PLUG
 - ⑥ TRAFFIC VALVE BOX

- NOTES:**
1. COAT AND WRAP IN ACCORDANCE WITH DIVISION 15 OF THE LVWD SPECS, PROTECTIVE COATINGS.
 2. CONCRETE TO BE 1/8" TO 1/4" BELOW FINAL STREET GRADE.
 3. REFER TO LVWD PRE-APPROVED PRODUCTS MASTER LISTING FOR COMPLETE DESCRIPTION OF COMPONENTS.
- 2" MANUAL BLOW-OFF ASSEMBLY FOR:**
- 4" THROUGH 20" AC PIPE
 - 4" THROUGH 12" PVC PIPE
 - 4" THROUGH 20" DI PIPE

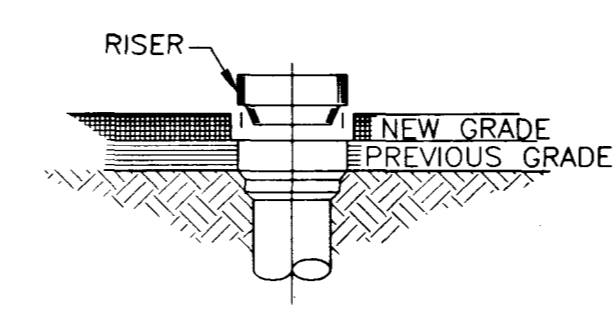
2' MANUAL BLOW-OFF ASSEMBLY ⑥
 NOT TO SCALE

IMPROVED STREET INSTALLATION UNIMPROVED STREET INSTALLATION



RAISE TOP SECTION AND/OR INSTALL RISERS AS NECESSARY.

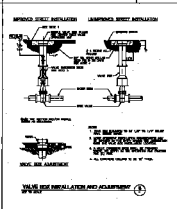
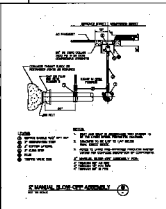
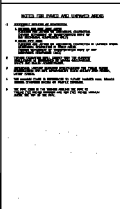
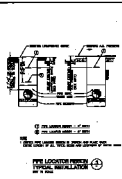
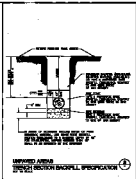
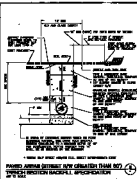
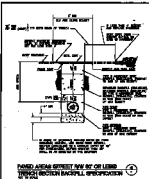
- NOTES**
1. FINAL RIM ELEVATION TO BE 1/8" TO 1/4" BELOW FINAL STREET GRADE.
 2. MORE STRINGENT INSTALLATION REQUIREMENTS MAY BE IMPOSED BY THE ENTITY HAVING THE JURISDICTION OVER THE VALVE BOX INSTALLATION LOCATION.
 3. A VALVE EXTENSION STEM SHALL BE PROVIDED WHERE THE DEPTH TO THE OPERATING NUT EXCEEDS FIVE (5) FEET.
 4. ALL CONCRETE COLLARS TO BE 10" THICK.



VALVE BOX INSTALLATION AND ADJUSTMENT ⑤
 NOT TO SCALE

Avoid cutting underground utility lines. It's costly.

Call before you Dig
 1-800-227-2600



LAS VEGAS VALLEY WATER DISTRICT
1515 W. WASHINGTON AVENUE
LAS VEGAS, NV 89102
702.733.1234

PROJECT SCALE: 1" = 12"

STANDARD DETAILS

DATE: 05/18/2017
BY: J. W. [unreadable]

1-800-321-0000

851