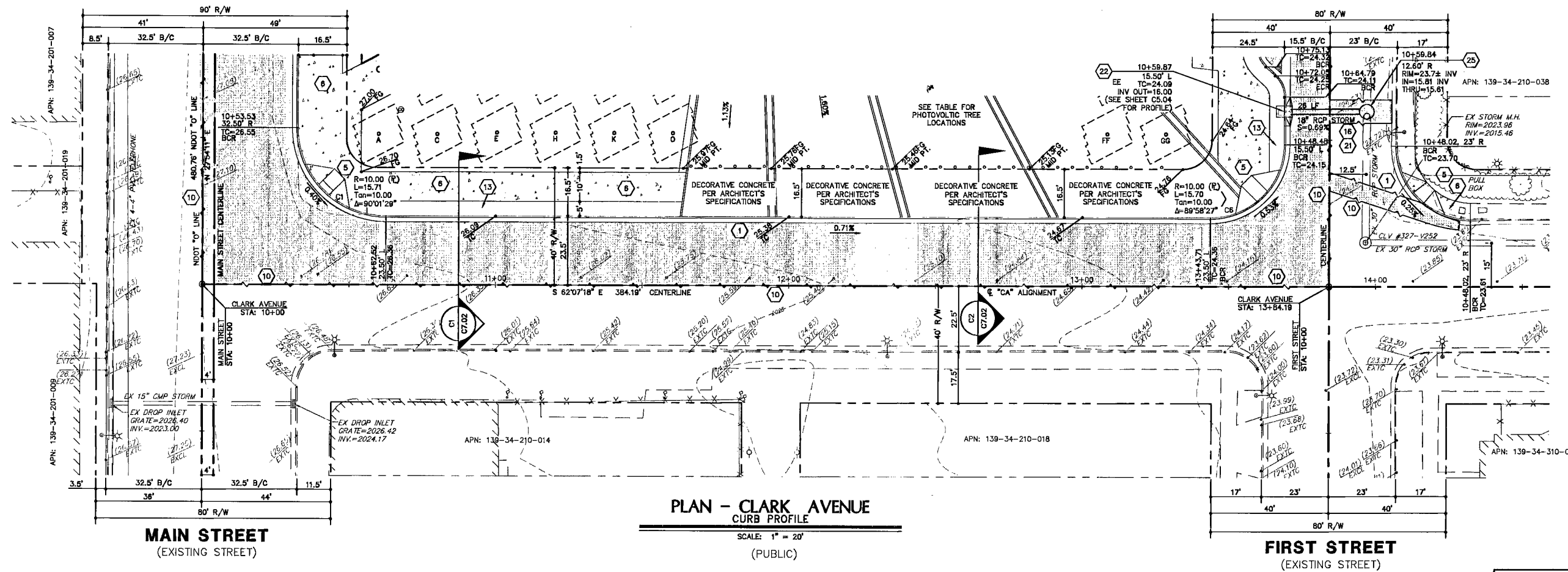


**MAIN STREET**  
(SEE SHEET C6.03)

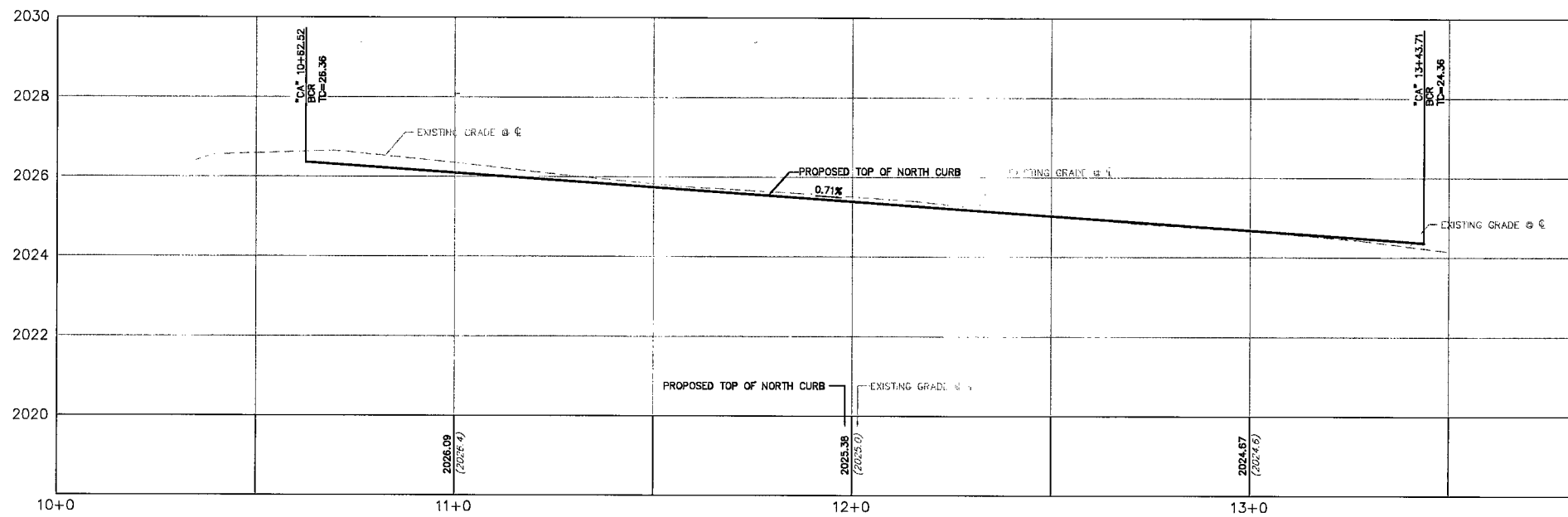
**FIRST STREET**  
(SEE SHEET C6.04)



**PLAN - CLARK AVENUE**  
CURB PROFILE

SCALE: 1" = 20'

CURVE TABLE			
CURVE	RADIUS	LENGTH	TANGENT
CI	30.00	47.14	30.01
CB	25.00	39.26	24.99



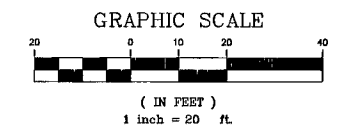
**PROFILE - CLARK AVENUE**  
CURB PROFILE

SCALE: 1" = 2' VERT. 1" = 20' HORIZ.

**LEGEND**

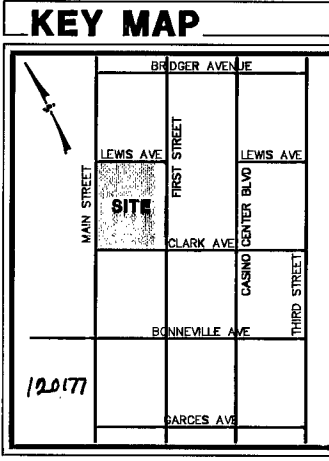
- RIGHT-OF-WAY LINE
- PARCEL LOT LINE
- ROAD CENTERLINE
- EXISTING CURB AND GUTTER
- EXISTING CONTOUR
- EXISTING TOP OF CURB ELEVATION
- EX 15" CMP STORM
- EXISTING STORM PIPE
- PROPOSED CURB AND GUTTER
- PROPOSED TOP OF CURB ELEVATION
- PROPOSED FLOW LINE ELEVATION
- PROPOSED PAVING

- CONSTRUCTION NOTES:**
- 1) 1" CURB AND GUTTER PER CCAUSD NO. 218
  - 3) COMMERCIAL DRIVEWAY PER CITY OF LAS VEGAS DWG #203-DC
  - 5) CASE II SIDEWALK RAMP PER CCAUSD NO. 235 (A=8", B=8" UNLESS OTHERWISE SPECIFIED)
  - 8) SIDEWALK PER CCAUSD NO. 234 (SIZE PER PLAN)
  - 10) SAWCUT AND MATCH EXISTING AC.
  - 11) ENHANCED PATTERN CONCRETE SECTION PER SOILS REPORT. ENHANCED DRIVEWAY TREATMENT PER DOWNTOWN CENTENNIAL PLAN GRAPHIC B.
  - 13) PLANTER AREA/AMENITY ZONE
  - 20) 2.5" TYPE CM2 DROP INLET PER CCAUSD NO. 412A
  - 25) 60" TYPE IA STORM DRAIN MANHOLE PER CCAUSD NO. 404



**Call before you Dig**  
Call before you Dig  
Underground Overhead

1-702-455-7511  
1-702-455-7511  
1-702-455-7511



**BASIS OF BEARING**

SOUTH 27°54'30" WEST BEING THE CENTERLINE OF CASINO CENTER BOULEVARD BETWEEN STEWART AVENUE AND COOLIDGE AVENUE AS SHOWN BY MAP THEREOF IN FILE 67, PAGE 79 OF SURVEYS IN THE CLARK COUNTY RECORDER'S OFFICE.

**BENCHMARK**

CITY OF LAS VEGAS BENCHMARK No. 6001 345WB RIVET & PLATE IN TOP OF CURB ON EAST SIDE OF MAIN BETWEEN BONNEVILLE & GARCES & LIGHT POLE.  
NAVD88 DATUM, PUBLISHED DECEMBER 2, 2002. ELEVATION = 817.8544 METERS 2027.08 FEET

**UTILITY NOTE**

UTILITY LOCATIONS SHOWN HEREON ARE APPROXIMATE ONLY. IT SHALL BE THE CONTRACTORS RESPONSIBILITY TO DETERMINE THE EXACT VERTICAL AND HORIZONTAL LOCATION OF ALL EXISTING UNDERGROUND UTILITIES PRIOR TO COMMENCING CONSTRUCTION. NO REPRESENTATION IS MADE THAT ALL EXISTING UTILITIES ARE SHOWN HEREON. THE ENGINEER ASSUMES NO RESPONSIBILITY FOR UTILITIES NOT SHOWN OR UTILITIES NOT SHOWN IN THEIR PROPER LOCATION. IT SHALL BE THE CONTRACTORS RESPONSIBILITY TO PROTECT ALL EXISTING UTILITIES DURING CONSTRUCTION. ANY UTILITIES DAMAGED DURING CONSTRUCTION MUST BE REPAIRED IMMEDIATELY AND TO THE OWNERS SATISFACTION AT THE CONTRACTORS EXPENSE.

**UTILITIES NOTE**

SEE SHEETS C5.01 AND C5.02 FOR PROPOSED WATER AND SEWER FACILITIES

**STORM DRAIN NOTE**

SEE SHEETS C5.04 FOR PROPOSED STORM DRAIN FACILITIES

**ONSITE IMPROVEMENTS NOTE**

SEE SHEETS C4.01 AND C4.02 FOR PROPOSED GRADING AND IMPROVEMENTS

**POGGEMEYER DESIGN GROUP**

6660 Smokey Ranch Sulte 110  
Las Vegas, Nevada 89128

(702) 255-8100  
(702) 255-8378

www.poggemeyer.com

**COURTNEY MANFRED**  
REGISTERED PROFESSIONAL ENGINEER  
EX. 12-31-11  
CIVIL  
No. 19428

CLARK AVENUE - PLAN & PROFILE

**NEW CITY HALL**  
CITY OF LAS VEGAS  
CLARK COUNTY, NEVADA

JOB NUMBER: 18077C  
DESIGNED BY: SCD/CLM  
DRAWN BY: BAM  
CHECKED BY: SCD  
DATE: 8/31/09  
SHEET NUMBER: C6.02  
21 of 40