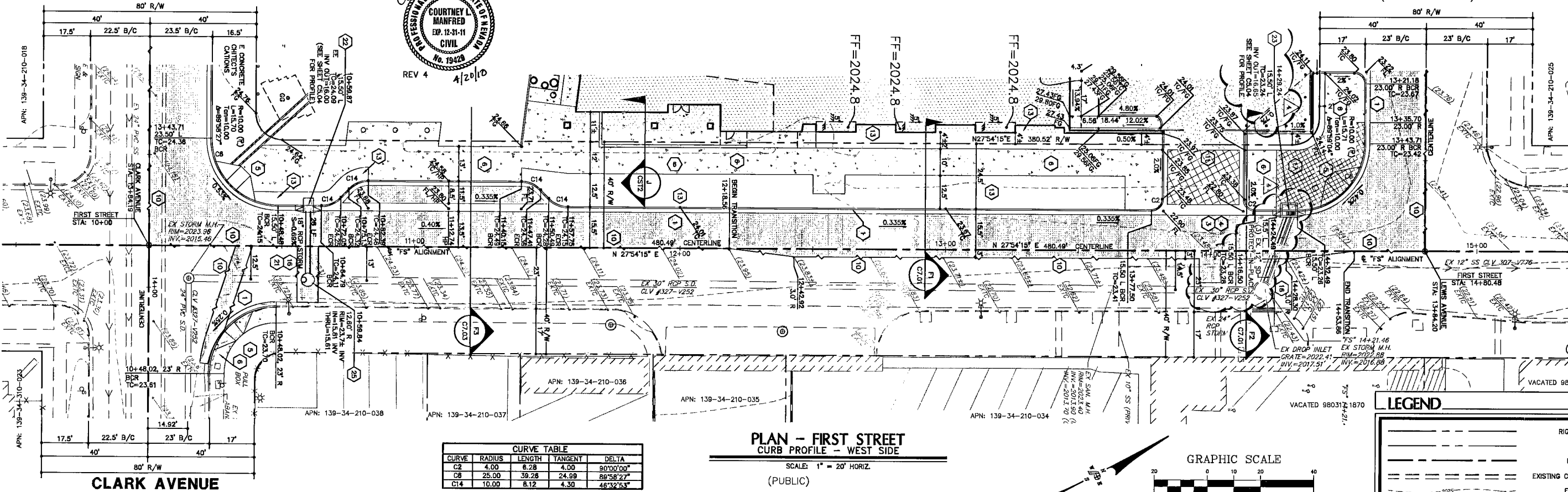
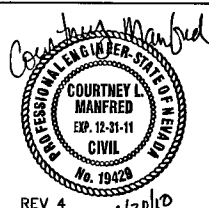


**CLARK AVENUE**

(SEE SHEET C6.02)

**LEWIS AVENUE**

(SEE SHEET C6.01)



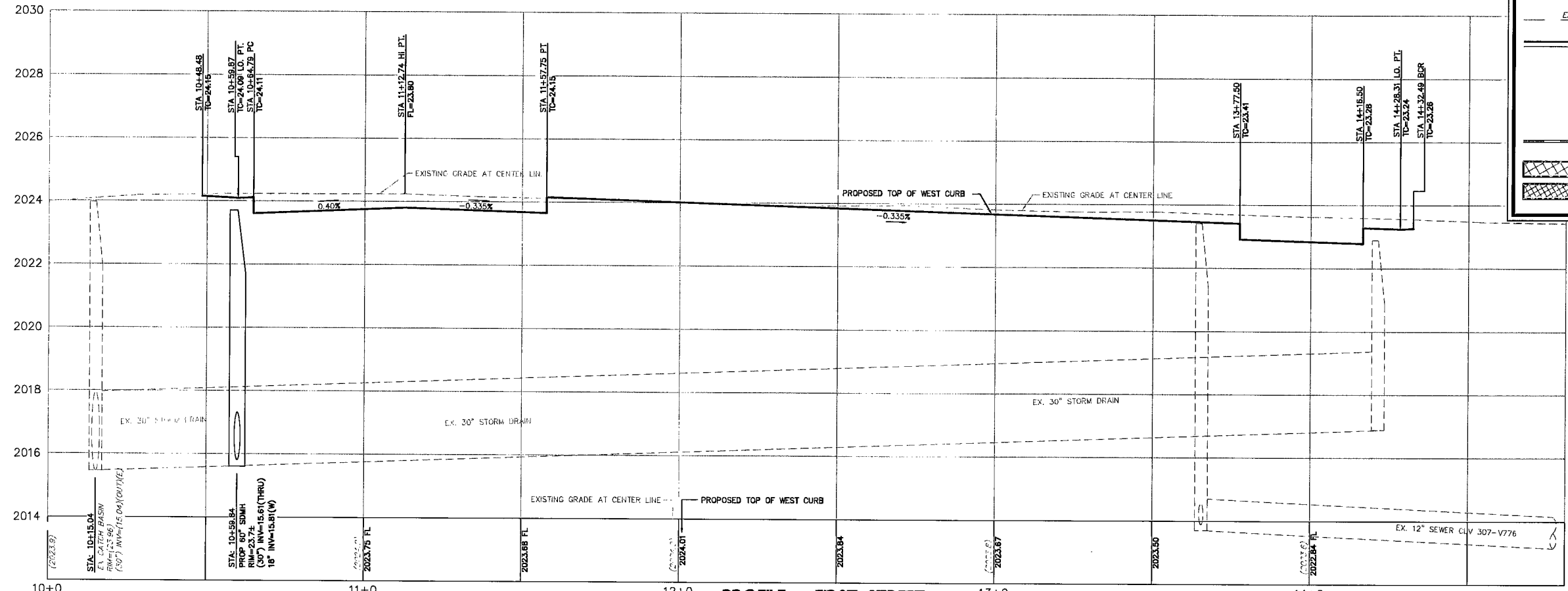
CURVE	RADIUS	LENGTH	TANGENT	DELTA
C2	4.00	8.28	4.00	90°00'00"
C8	25.00	38.28	24.99	86°58'27"
C14	10.00	8.12	4.30	46°32'53"

**PLAN - FIRST STREET  
CURB PROFILE - WEST SIDE**

SCALE: 1" = 20' HORIZ.  
(PUBLIC)

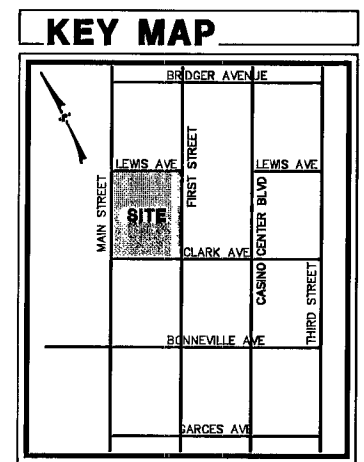
**LEGEND**

- RIGHT-OF-WAY LINE
- PARCEL LOT LINE
- ROAD CENTERLINE
- EXISTING CURB AND GUTTER
- EXISTING CONTOUR
- EXISTING TOP OF CURB ELEVATION
- EXISTING STORM PIPE
- PROPOSED CURB AND GUTTER
- PROPOSED TOP OF CURB ELEVATION
- PROPOSED FLOW LINE ELEVATION
- PROPOSED PAVING
- PROPOSED WALL
- PROPOSED DRIVEWAY ENHANCED PATTERN
- PROPOSED DECORATIVE PAVING



**PROFILE - FIRST STREET  
CURB PROFILE - WEST SIDE**

SCALE: 1" = 2' VERT. 1" = 20' HORIZ.



**Call before you dig**  
before you dig  
Underground Overhead

1-702-455-7511  
1-702-455-7511  
1-702-455-7511

**BASIS OF BEARING**

SOUTH 27°54'30" WEST BEING THE CENTERLINE OF CASINO CENTER BOULEVARD BETWEEN STEWART AVENUE AND COOLIDGE AVENUE AS SHOWN BY MAP THEREOF IN FILE 57, PAGE 79 OF SURVEYS IN THE CLARK COUNTY RECORDER'S OFFICE.

**BENCHMARK**

CITY OF LAS VEGAS BENCHMARK No. 6001 345W8  
RIVET & PLATE IN TOP OF CURB ON EAST SIDE OF MAIN BETWEEN BONNEVILLE & GARCES @ LIGHT POLE.  
NAVD88 DATUM, PUBLISHED DECEMBER 2, 2002.  
ELEVATION = 617.8544 METERS  
2027.08 FEET

**CONSTRUCTION NOTES:**

- 1 "L" CURB AND GUTTER PER CCAUSD NO. 218
- 3 COMMERCIAL DRIVEWAY PER CITY OF LAS VEGAS DWG #203-DC
- 4 INSTALL 4" CROSS GUTTER PER CITY OF LAS VEGAS DWG NO. #203-DC
- 5 CASE II SIDEWALK RAMP PER CCAUSD NO. 235 (A=8', B=8' UNLESS OTHERWISE SPECIFIED)
- 6 SIDEWALK PER CCAUSD NO. 234 (SIZE PER PLAN)
- 10 SAWCUT AND MATCH EXISTING AC.
- 11 ENHANCED PATTERN CONCRETE SECTION PER SOILS REPORT. ENHANCED DRIVEWAY TREATMENT PER DOWNTOWN CENTENNIAL PLAN GRAPHIC B.
- 13 PLANTER AREA/AMENITY ZONE
- 15 "LOADING ZONE" PER CCAUSD NO. 234.1
- 16 AC PAVEMENT PATCH PER CCAUSD NO. 503 AR
- 17 DECORATIVE PAVING PER DOWNTOWN CENTENNIAL PLAN GRAPHIC 12
- 20 2.5" TYPE CM2 DROP INLET PER CCAUSD NO. 412A
- 22 2.5" TYPE DM2 DROP INLET PER CCAUSD NO. 412A
- 23 5" TYPE DM2 DROP INLET PER CCAUSD NO. 412A
- 25 60" TYPE IA STORM DRAIN MANHOLE PER CCAUSD NO. 404

**UTILITY NOTE**  
UTILITY LOCATIONS SHOWN HEREON ARE APPROXIMATE ONLY. IT SHALL BE THE CONTRACTORS RESPONSIBILITY TO DETERMINE THE EXACT VERTICAL AND HORIZONTAL LOCATION OF ALL EXISTING UNDERGROUND UTILITIES PRIOR TO COMMENCING CONSTRUCTION. NO REPRESENTATION IS MADE THAT ALL EXISTING UTILITIES ARE SHOWN HEREON. THE ENGINEER ASSUMES NO RESPONSIBILITY FOR UTILITIES NOT SHOWN OR UTILITIES NOT SHOWN IN THEIR PROPER LOCATION. IT SHALL BE THE CONTRACTORS RESPONSIBILITY TO PROTECT ALL EXISTING UTILITIES DURING CONSTRUCTION. ANY UTILITIES DAMAGED IMMEDIATELY AND TO THE OWNERS SATISFACTION AT THE CONTRACTORS EXPENSE.

**UTILITIES NOTE**  
SEE SHEETS C5.01 AND C5.02 FOR PROPOSED WATER AND SEWER FACILITIES

**STORM DRAIN NOTE**  
SEE SHEETS C5.04 FOR PROPOSED STORM DRAIN FACILITIES

**ONSITE IMPROVEMENTS NOTE**  
SEE SHEETS C4.01 AND C4.02 FOR PROPOSED GRADING AND IMPROVEMENTS

**POGGEMEYER DESIGN GROUP**  
6860 Smokey Ranch Suite 110  
Las Vegas, Nevada 89128  
702.255.8100  
702.255.8378  
www.poggemeyer.com

**PROFESSIONAL ENGINEER SEAL**  
COURTNEY L. MANFRED  
EXP. 12-31-11  
NO. 19428  
9/19/09

REVISION  
NO. 4  
DATE 4/20/10  
REASON REVISED STORM DRAIN IN FIRST ST. PER NV ENERGY CONFLICT

**FIRST STREET - PLAN & PROFILE**

**NEW CITY HALL**  
CITY OF LAS VEGAS  
CLARK COUNTY, NEVADA

JOB NUMBER 08077C  
DESIGNED BY SCD/CLM  
DRAWN BY BAM  
CHECKED BY SCD  
DATE 8/31/09  
SHEET NUMBER C6.04  
23 OF 40

122649

RePlot