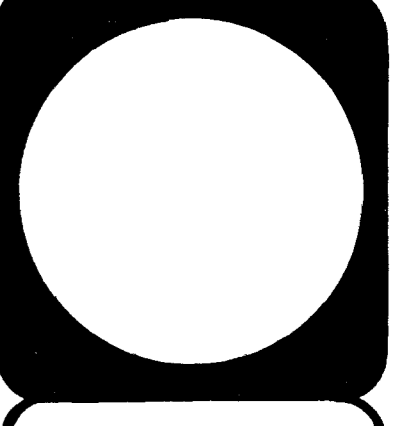




| APPROVALS | DATE |
|--|--------|
| <i>[Signature]</i> DESIGN AND DEVELOPMENT | 6-2-89 |
| <i>[Signature]</i> COURT ADMINISTRATOR | 6-5-89 |
| <i>[Signature]</i> DEPUTY CITY MANAGER | 6-5-89 |

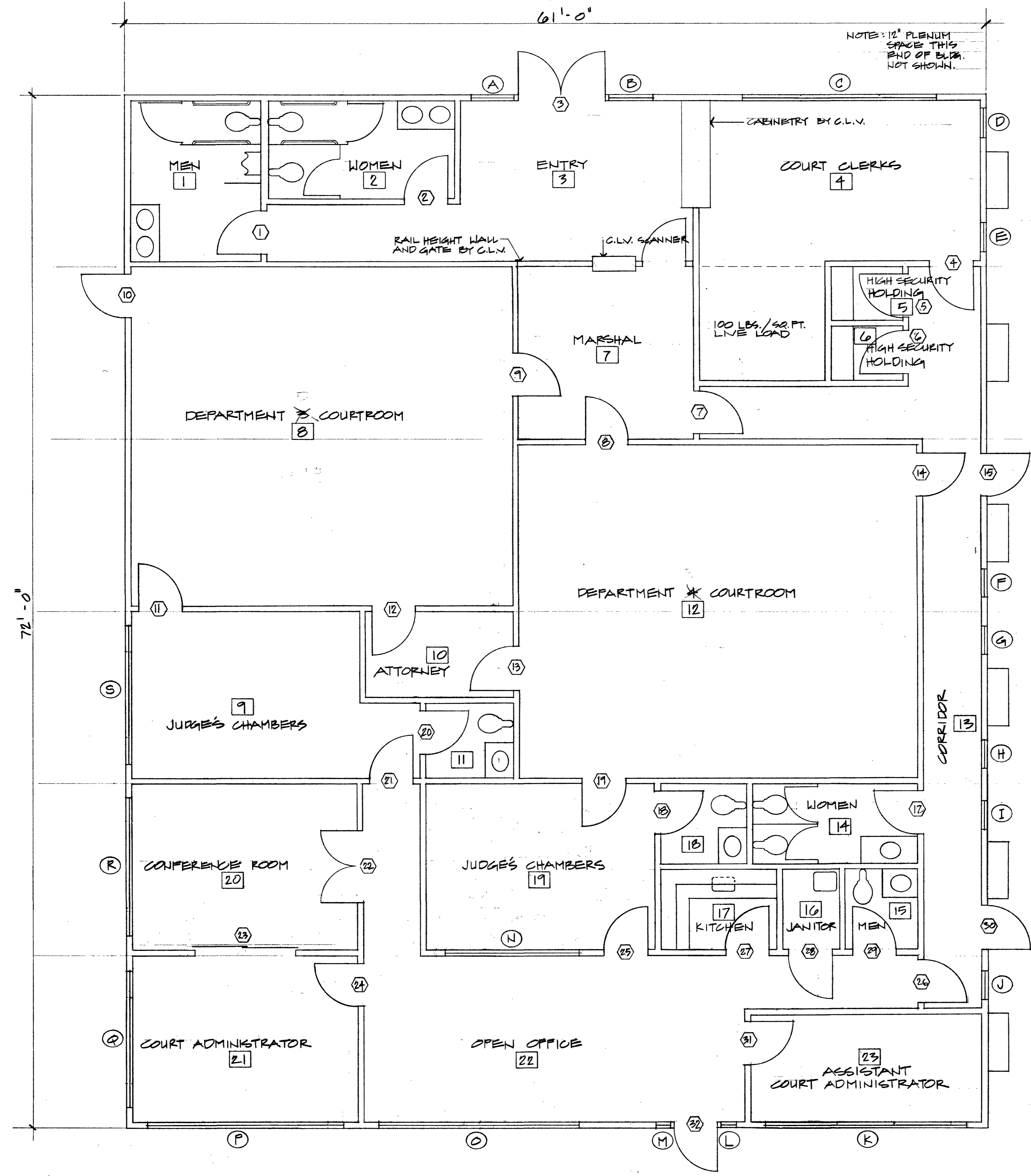
City of Las Vegas, Nevada
Department of Design and Development
 Thomas B. Graham, AICP, RLA, Director
 INTERIOR DESIGN DIVISION
 DESIGN BY: _____ DATE: 6-1-89
 DRAWN BY: _____

| REVISIONS | DATE |
|-----------|------|
| | |
| | |
| | |



MUNICIPAL COURT EXPANSION
 FLOOR PLAN

PROJECT NO. _____
 DRAWING NO. 521-204
 SHEET 1 OF 3



FLOOR PLAN
 1/4" = 1'-0"
 NORTH