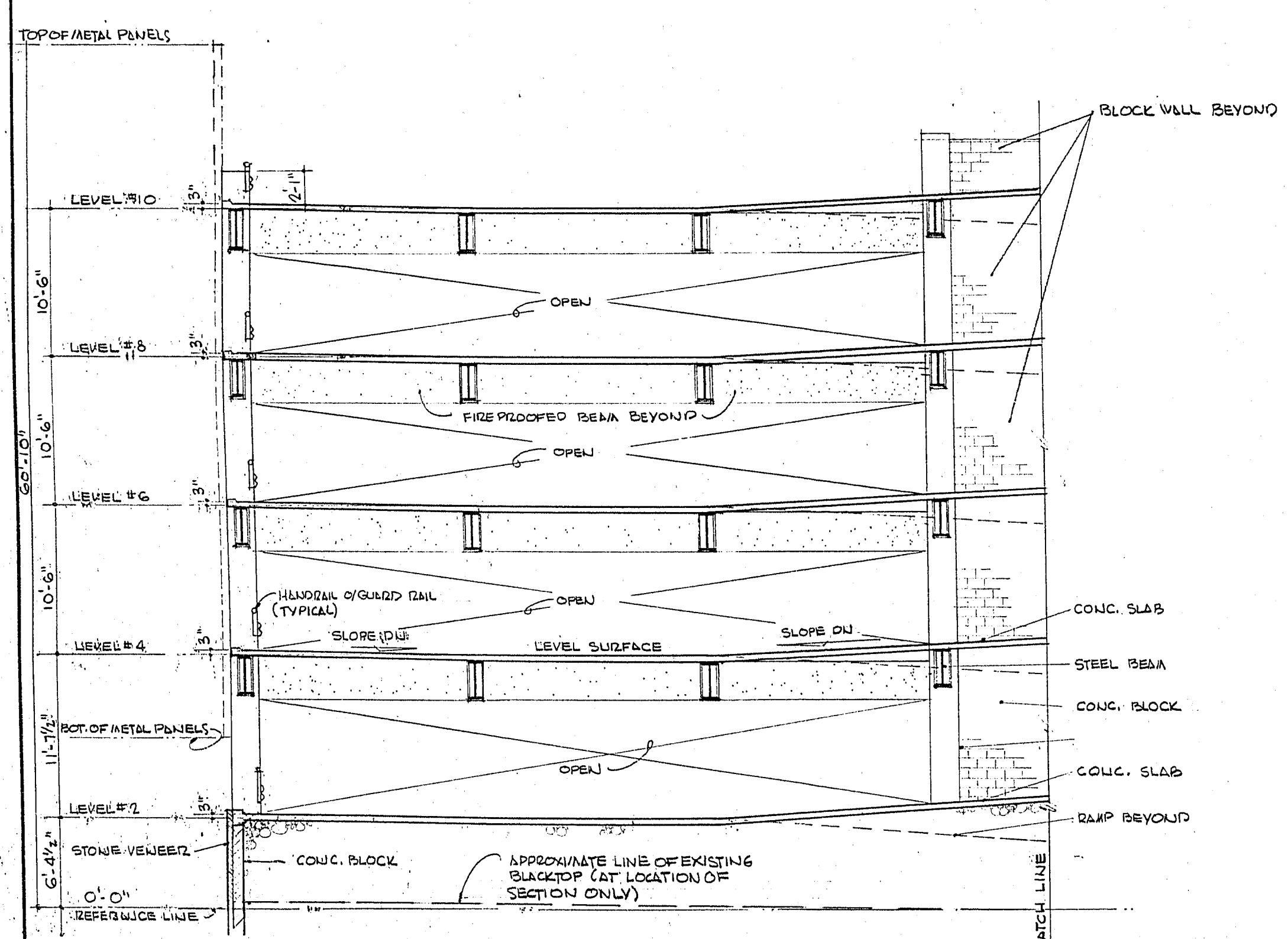
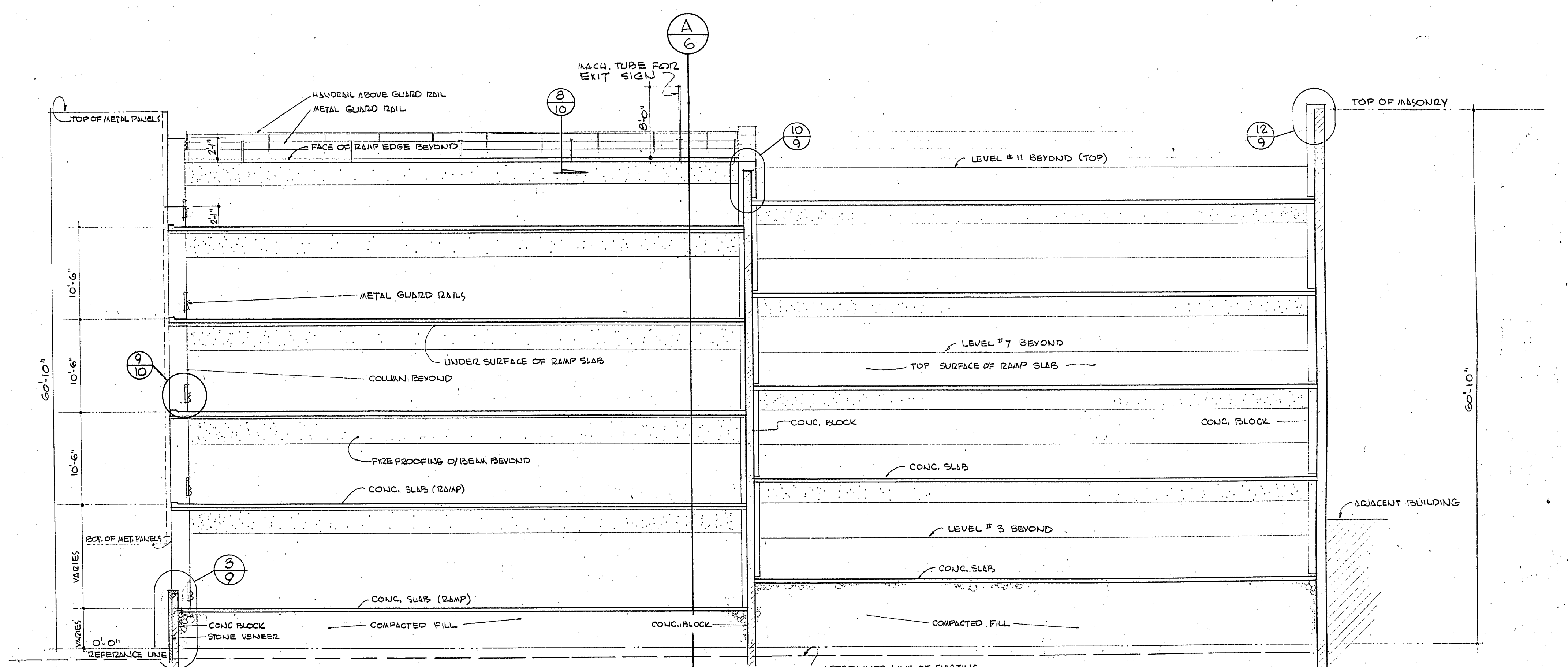


SECTION-PARTIAL A/G  
1/8" = 1'-0"



SECTION-PARTIAL A/G  
1/8" = 1'-0"



SECTION THRU RAMPS B/G  
1/8" = 1'-0"

NOTE  
PRECAST CONC. TIRE BUMPERS NOT SHOWN FOR CLARITY  
SEE LEVEL #5 & 6 FOR TYPICAL LAYOUT

THE DESIGNS AND IDEAS INDICATED BY THESE DRAWINGS WERE CREATED FOR USE ON THIS PROJECT ONLY AND ARE THE PROPERTY OF EDWARD B. HENDRICKS ASSOC. THEY MAY NOT BE USED FOR ANY OTHER PURPOSE WHATSOEVER WITHOUT THE WRITTEN PERMISSION OF THE OFFICE OF EDWARD B. HENDRICKS ASSOCIATES.

**EDWARD B. HENDRICKS ASSOCIATES**  
ARCHITECTURE • PLANNING • ENGINEERING  
E. B. HENDRICKS A.I.A.  
FRED L. KENNEDY  
G. L. JACOBSON

537 E. SAHARA AVE.  
LAS VEGAS, NEVADA  
PHONE • 735-0902

**MUNICIPAL PARKING GARAGES FULL SECTIONS**  
CITY OF LAS VEGAS NEVADA  
CARSON SITE  
DIRECTOR OF PUBLIC WORKS

DATE 9-8-66	SHEET 6	OF 12	I.D. 17
JOB NO.	DRAWN BY JACOBSON	DATE BY	REVISIONS