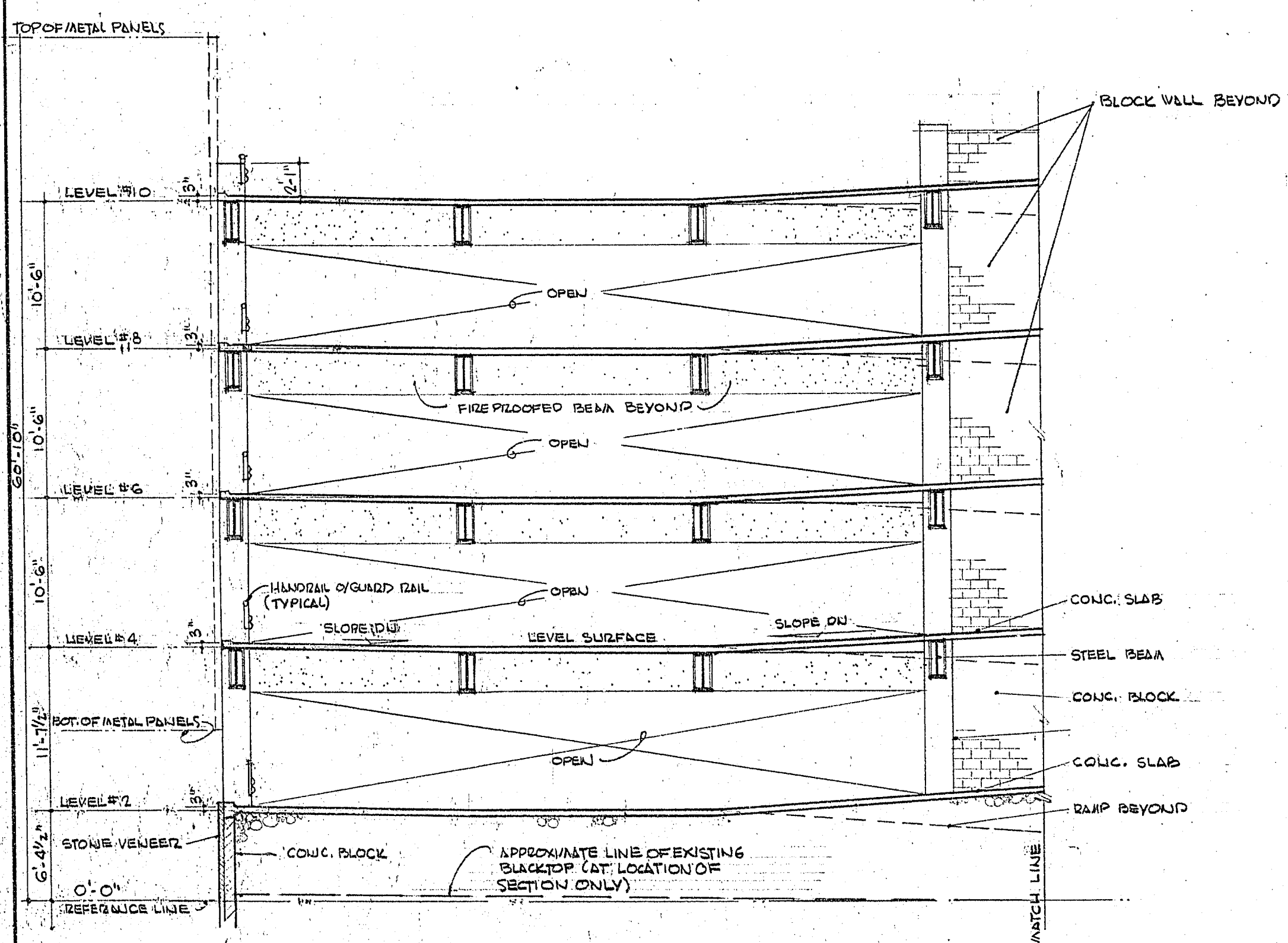
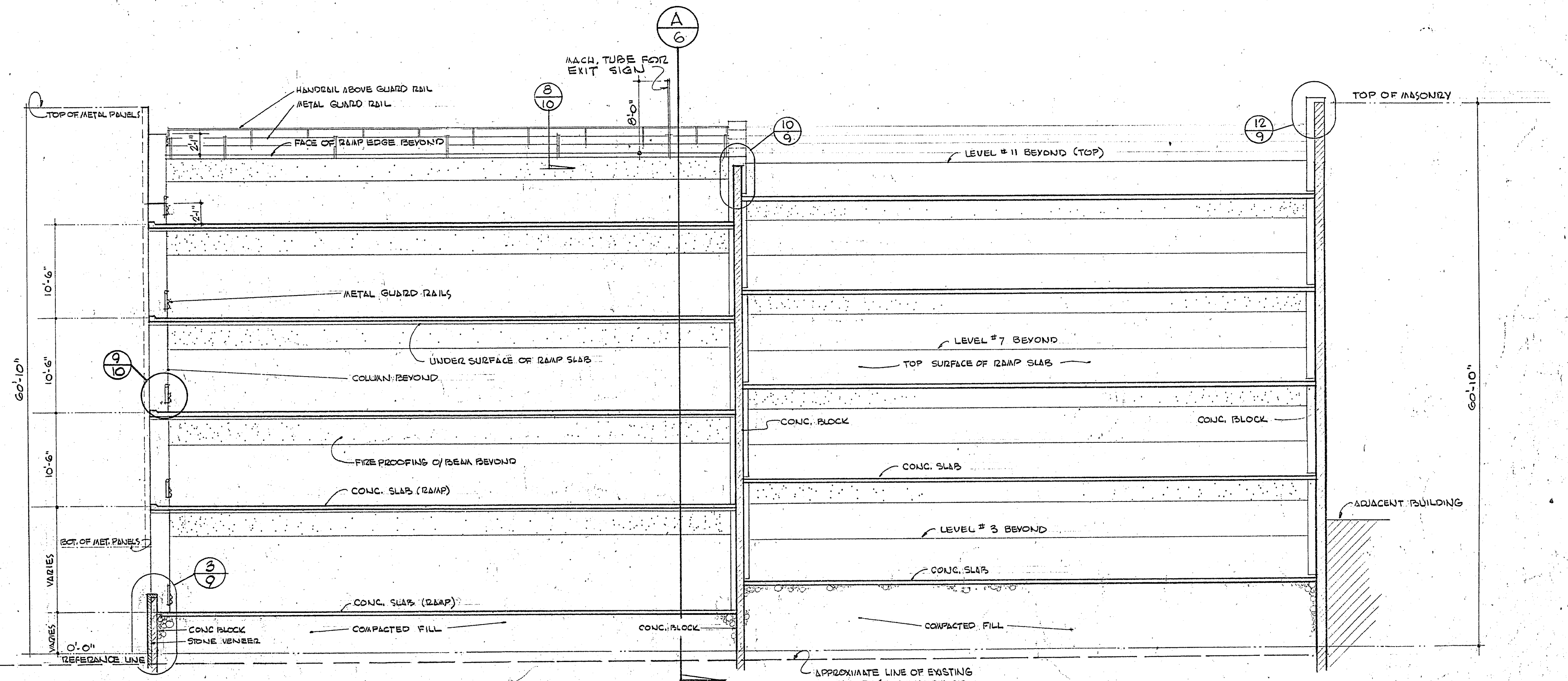


SECTION-PARTIAL A-6
1/8" = 1'-0"



SECTION-PARTIAL A-6
1/8" = 1'-0"



SECTION THRU RAMPS B-6
1/8" = 1'-0"

NOTE
PRECAST CONC. TIRE BUMPERS NOT SHOWN FOR CLARITY
SEE LEVEL #5 & 6 FOR TYPICAL LAYOUT

THE DESIGNS AND IDEAS INDICATED BY THESE DRAWINGS WERE CREATED FOR USE ON THIS PROJECT ONLY AND ARE THE PROPERTY OF EDWARD B. HENDRICKS ASSOC. THEY MAY NOT BE USED FOR ANY OTHER PURPOSE WHATSOEVER WITHOUT THE WRITTEN PERMISSION OF THE OFFICE OF EDWARD B. HENDRICKS ASSOCIATES.

EDWARD B. HENDRICKS ASSOCIATES
ARCHITECTURE • PLANNING • ENGINEERING
E. B. HENDRICKS A.I.A.
FRED L. KENNEDY
G. L. JACOBSON
537 E. SAHARA AVE.
LAS VEGAS, NEVADA
PHONE • 735-0502

MUNICIPAL PARKING GARAGES FULL SECTIONS
CITY OF LAS VEGAS NEVADA
CARSON SITE
DIRECTOR OF PUBLIC WORKS

DATE 9-8-66	SHEET 6	OF 12	I.D. 17	DATE BY	REVISIONS
JOB NO.					
DRAWN BY JACOBSON					

1-15 512-437