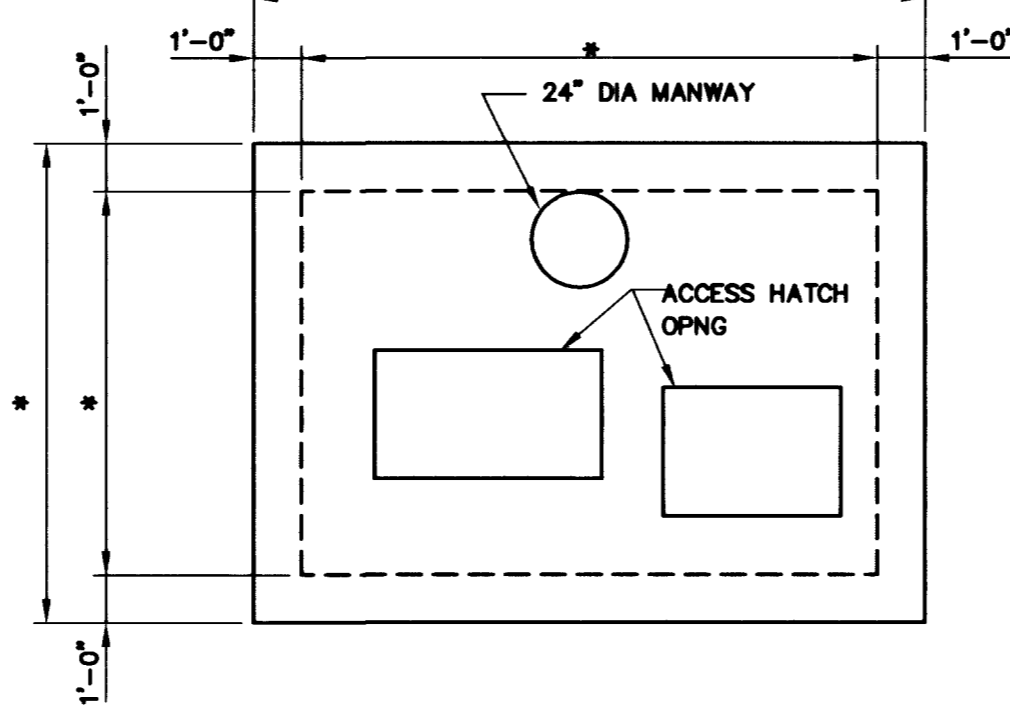


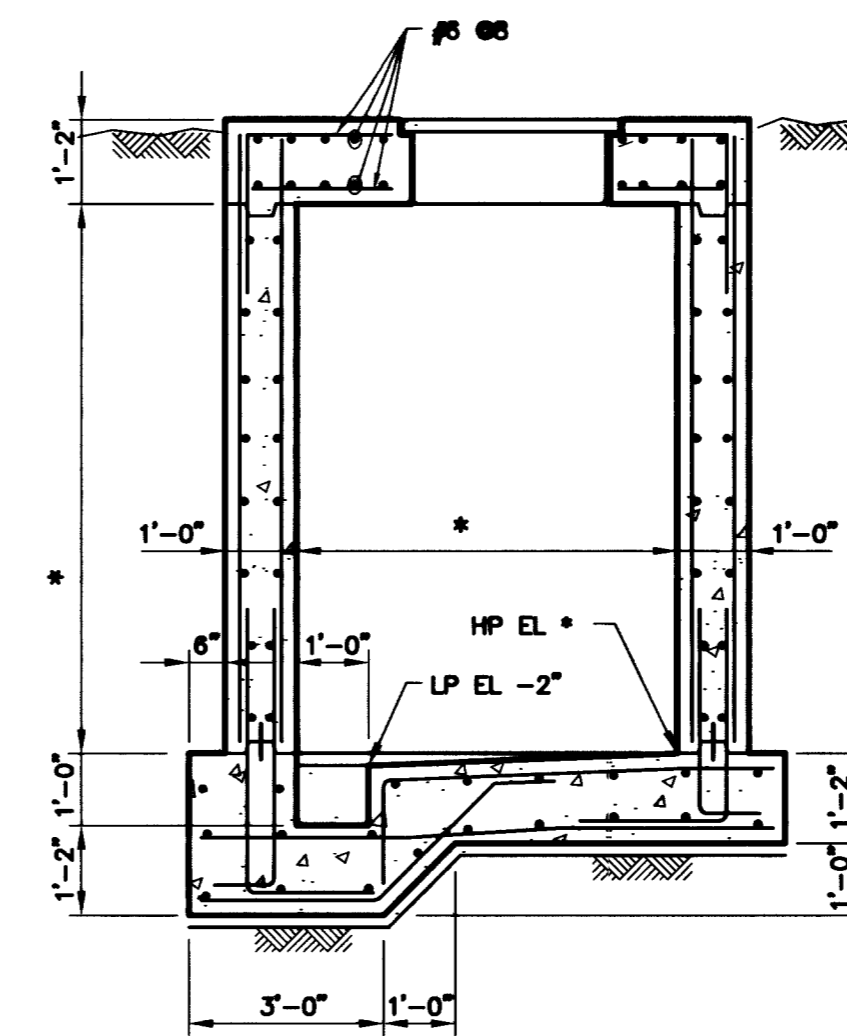
NOTE:
1. ALL REINF. ARE #5 @8.
VERT REINF. ARE NOT SHOWN FOR CLARITY.

SECTIONAL PLAN
SCALE: 1/4" = 1'-0"



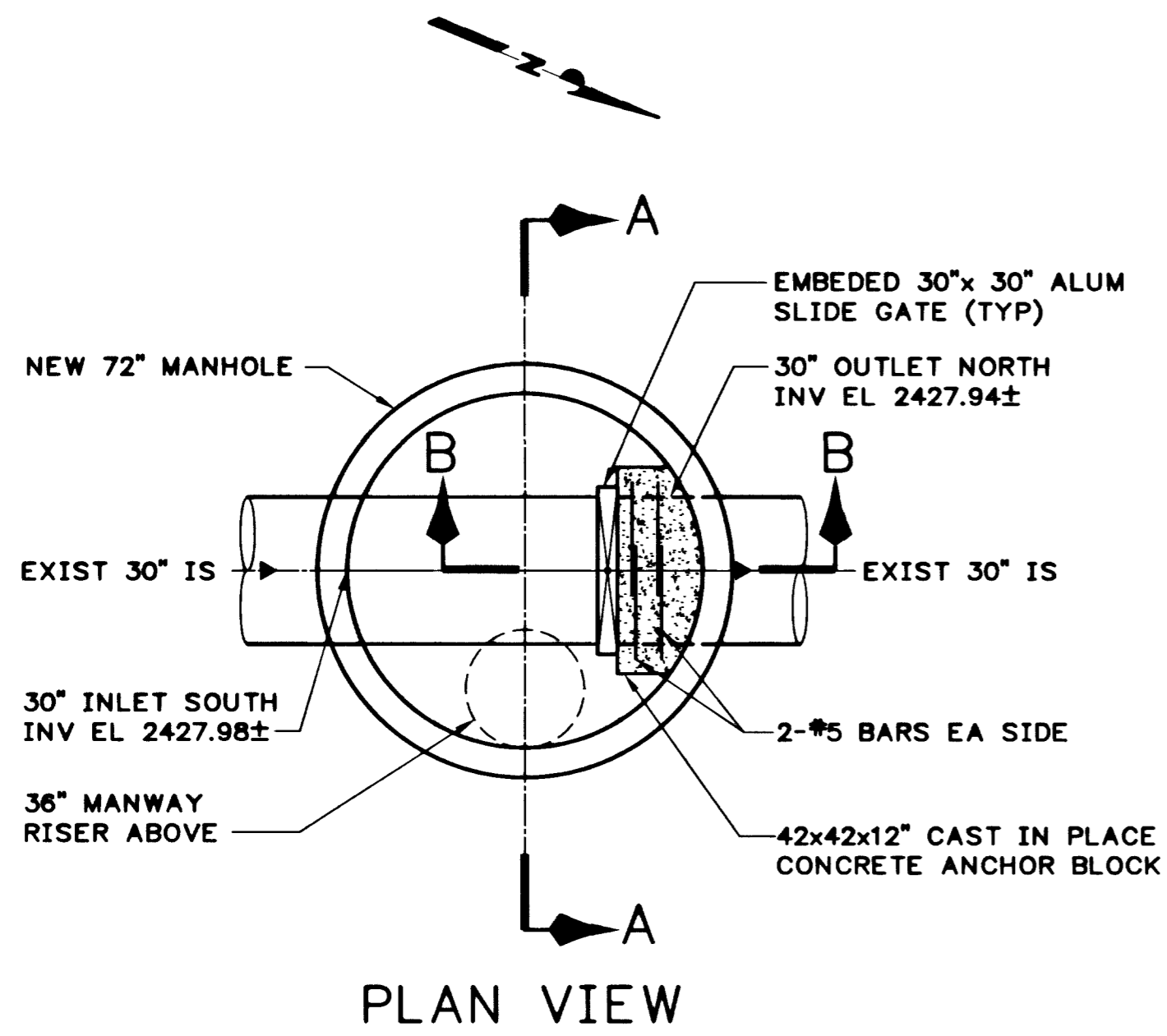
NOTES:
1. PROVIDE FRAME AND SIDE WALK DOOR FOR EACH ACCESS HATCH AND MANWAY OPENINGS TO CARRY H2O TRUCK LOAD. SEE DRAWINGS G16 & G17 FOR LOCATION AND SIZE OF OPENINGS.
2. * = SEE DRAWINGS G16 & G17
3. SEE DRAWINGS G16 & G17 FOR ADDITIONAL REINF. AROUND SLAB OPENINGS.

TOP PLAN
SCALE: 1/4" = 1'-0"

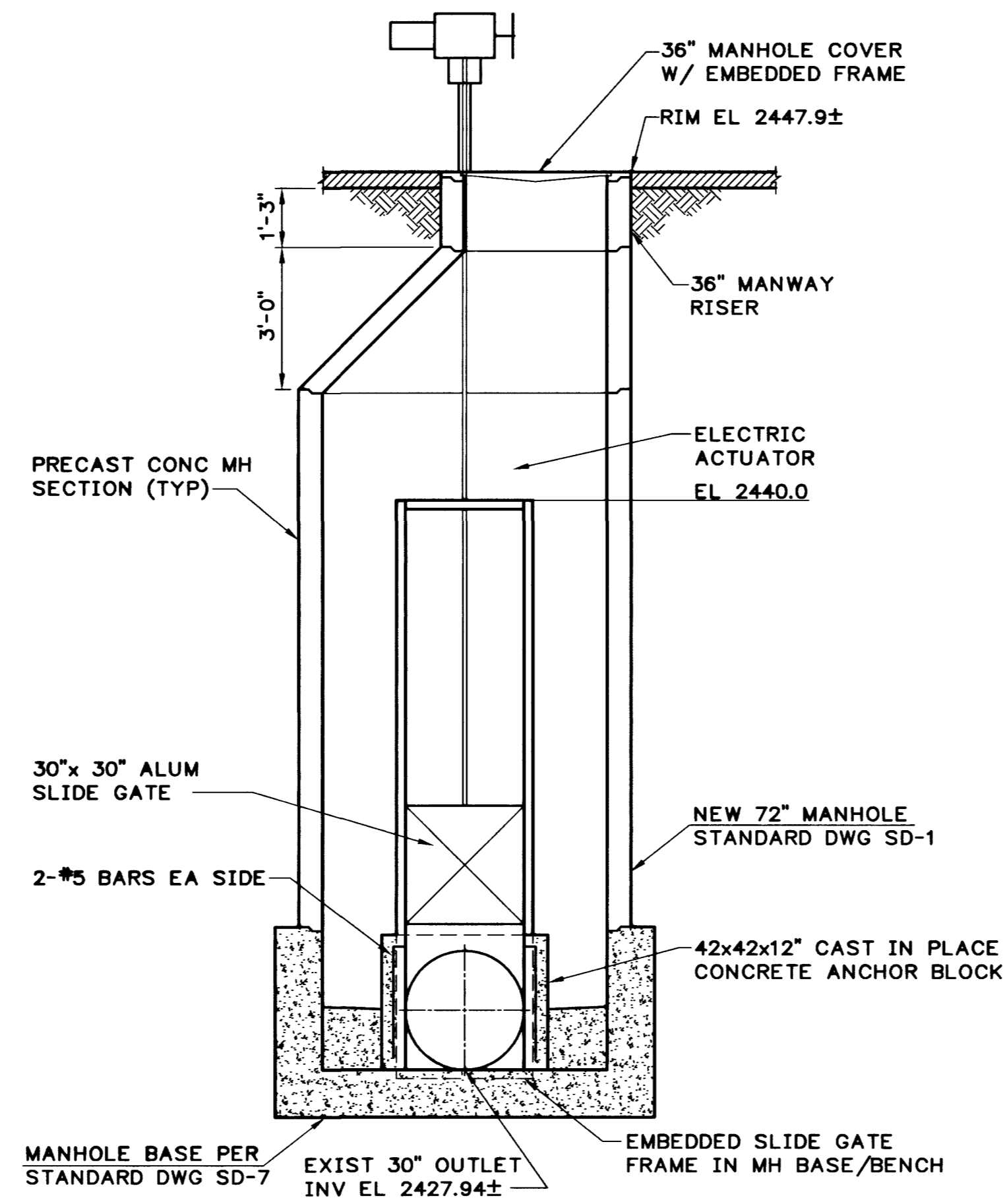


NOTE:
1. ALL REINF. ARE #5 @8 UNLESS NOTED OTHERWISE.

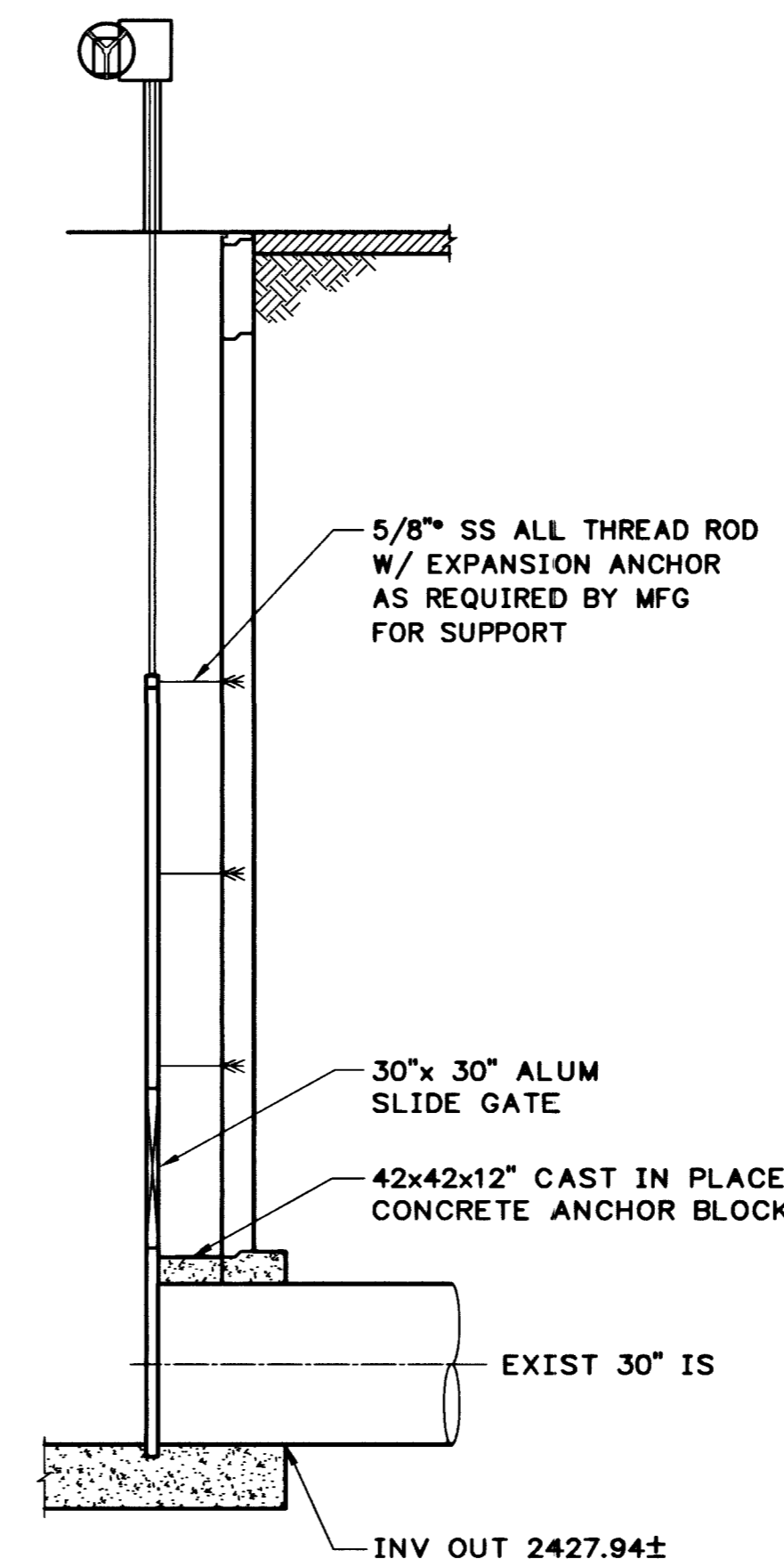
SECTION 1/G16,G17
SCALE: 3/8" = 1'-0"



DETAIL 1/G13 -
INFLUENT OVERFLOW STRUCTURE
SCALE: 3/8" = 1'-0"



SECTION A
SCALE: 3/8" = 1'-0"



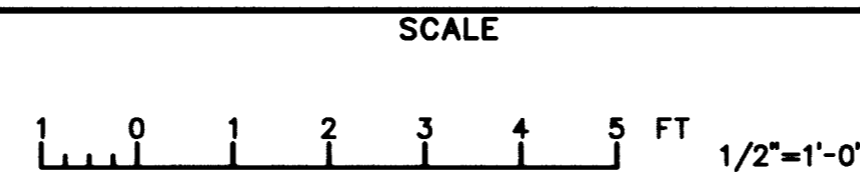
SECTION B
SCALE: 3/8" = 1'-0"

KLEIN AND HOFFMAN, INC.
CONSULTING ENGINEERS
4625 SOUTH POLARIS AVENUE, SUITE 214
LAS VEGAS, NV 89103 (702) 736-8343

GREELEY AND HANSEN
ENGINEERS
4625 SOUTH POLARIS AVENUE, SUITE 210
LAS VEGAS, NV 89103 (702) 736-7062

DESIGNED MJP
DRAWN MJP
CHECKED JWJ
APPROVED

NO.	DATE	APPD	REVISION
1	12/14/98	JWW	ADDED THIS SHEET BY ADDENDUM 4



CITY OF LAS VEGAS, NEVADA
DEPARTMENT OF PUBLIC WORKS
NORTHWEST WATER RESOURCE CENTER (WRC)

GENERAL
YARD PIPING DETAILS

ADD 4.18 ADDED THIS SHEET

PROJ NO.	1215
DWG	G17A
SHEET	18 OF 218
DATE	OCTOBER 1998
REV	2

RECORD DRAWING

FILE: 121G17AR 1:1 07/02/01 13:15 GH-A